

Nutanix.NCP-5.15.v2022-06-20.q120

□□□□:	NCP-5.15
□□□□:	Nutanix Certified Professional - Multi cloud Infrastructure
□□□:	Nutanix
□□ □□ □□□:	120
□□:	v2022-06-20
# □□ □:	1858
# □□ □□□:	1200
https://www.krdump.com/Nutanix.NCP-5.15.v2022-06-20.q120.html	

NEW QUESTION: 1

prism pro(pro □□□□□ □□ prism central)□□ □□ □□ □□□ □□□□? (2□ □□)

- A. VM □□
- B. VM □□ □□
- C. □□ □□□ □□□□□

Answer: B,C ([LEAVE A REPLY](#))

NEW QUESTION: 2

CPU □□□□ □□ VM□□ 90% □□□□ □□□□□. □□ □□ □□□□ □□□□ □□□□□ □□ □□□ □□□□□.

VM CPU □□□□ 90%□ □□□□ □□ □□□□□ □□□□ □□□ □□□□□ □□□ □□ □ □□?

- A. CVM□□ ncli□ □□□□ □□□ VM□ □□ VM CPU □□ □□□□ 90% □□□ □□□ □□ □□□.
- B. □□ □□□□□□ VM CPU □□□ □□ □□ □□□□ 90% □□□□ □□□□.
- C. CVM□□ VM CPU □□□ □ □□ □□□□ □□□ □□□□ □□□□ cron □□□ □□□□ □.
- D. □□ □□□□□□ VM CPU □□□ □□□ □□ □□□ □□□□ □□□□ □□□□□.

Answer: ([SHOW ANSWER](#))

□□:

https://portal.nutanix.com/page/documents/details?targetId=Web-Console-Guide-Prismv5_16:Web-Console-Gui

NEW QUESTION: 3

□□□□ □□□□□ □□□□□ □□ AHV □□□□□ □□□□ □□□. □□□□ NCC□ □□ □□□□□ □□ □□□ □□□□□.

□□□□ □□□ □□ □□□ □□□□ □□□?

□□ □□: □ □□□ □□ □□ □□ □□□□ □□ □□ □□□ □□□□ □□ □□□ □ □□□□.

Procedure	Step
Shut down CVMs	<div style="border: 1px solid black; padding: 2px;"><div style="border: 1px solid black; padding: 2px; text-align: right;">▼</div><div style="border: 1px solid black; padding: 2px;">Step 1</div><div style="border: 1px solid black; padding: 2px;">Step 2</div><div style="border: 1px solid black; padding: 2px;">Step 3</div><div style="border: 1px solid black; padding: 2px;">Step 4</div></div>
Shut down Nodes	<div style="border: 1px solid black; padding: 2px;"><div style="border: 1px solid black; padding: 2px; text-align: right;">▼</div><div style="border: 1px solid black; padding: 2px;">Step 1</div><div style="border: 1px solid black; padding: 2px;">Step 2</div><div style="border: 1px solid black; padding: 2px;">Step 3</div><div style="border: 1px solid black; padding: 2px;">Step 4</div></div>
Shut down Guest VMs	<div style="border: 1px solid black; padding: 2px;"><div style="border: 1px solid black; padding: 2px; text-align: right;">▼</div><div style="border: 1px solid black; padding: 2px;">Step 1</div><div style="border: 1px solid black; padding: 2px;">Step 2</div><div style="border: 1px solid black; padding: 2px;">Step 3</div><div style="border: 1px solid black; padding: 2px;">Step 4</div></div>
Stop the Cluster	<div style="border: 1px solid black; padding: 2px;"><div style="border: 1px solid black; padding: 2px; text-align: right;">▼</div><div style="border: 1px solid black; padding: 2px;">Step 1</div><div style="border: 1px solid black; padding: 2px;">Step 2</div><div style="border: 1px solid black; padding: 2px;">Step 3</div><div style="border: 1px solid black; padding: 2px;">Step 4</div></div>

NUTANIX

Answer:

Procedure

Step

Shut down CVMs

	▼
Step 1	
Step 2	
Step 3	
Step 4	

Shut down Nodes

	▼
Step 1	
Step 2	
Step 3	
Step 4	

Shut down Guest VMs

	▼
Step 1	
Step 2	
Step 3	
Step 4	

Stop the Cluster

	▼
Step 1	
Step 2	
Step 3	
Step 4	

Procedure **NUTANIX** **Step**

Shut down CVMs

Shut down Nodes

Shut down Guest VMs

Stop the Cluster

Step 1
Step 2
Step 3
Step 4

Step 1
Step 2
Step 3
Step 4

Step 1
Step 2
Step 3
Step 4

Step 1
Step 2
Step 3
Step 4

□□:

<https://next.nutanix.com/how-it-works-22/scheduled-power-outage-relocating-cluster-hardware-if-you-need-to-s>

NEW QUESTION: 4

Leap □□□ □□□ □□□ □□□□□?

- A. □□ □□□ □□ □ □□ AHV □□□□□ □□□□□.
- B. 2□□ VM□ □□□□□ □□□□ □□ □□□□□ □□□□□.
- C. □ □□ Prism Central □□□□□□□ DR□ □□□□□.
- D. 2□□ AHV □□□□□□□ □□□□□ □□□□□.

Answer: A ([LEAVE A REPLY](#))

NEW QUESTION: 5

4. VM □□ □□

B. 1. □□ □□□□ CVM□ □□□□□□.

2. DR □□□□ □□ □□ VM□ □□ □□

3. □□ □□□□□ Prism Element□ □□□□□□.

4. VM □□ □□

C. 1. □□ □□□□ Prism Element□ □□□□□□.

2. DR □□□ □□□□ □□ □□□□ □□□□□.

3. □□□□□□□□ □□□□□.

4. VM □□ □□

D. 1. □□ □□□□ CVM□ □□□□□□.

2. VM □□□□ □ □□

3. □□ □□□□ □□□□□ □□ □□□□ □□□ □□ □□□□□□□ □□□□□.

4. VM □□ □□

Answer: C ([LEAVE A REPLY](#))

NEW QUESTION: 10

AHV □□□ □□□ □□ □□ □□□□ □□ □□□ □□□□□?

A. □□ □□

B. □□-□□

C. □□-s|b

D. □□ TCP

Answer: A ([LEAVE A REPLY](#))

□□

<https://next.nutanix.com/blog-40/network-load-balancing-with-acropolis-hypervisor-6463>

NEW QUESTION: 11

□□□□ □□□ □□□□ □□□ □□ □□ □□□□ □□□ □□□□□ □□□?

A. iSER

B. □

C. SAML

D. LDAP

Answer: ([SHOW ANSWER](#))

<https://portal.nutanix.com/page/documents/details/?targetId=Web-Console-Guide-Prism-v50:wc-block-services-enabling-t.html> □□□ □□□□ Nutanix □□□□□ □□□□ □□□□□ □□. □ □□□□□(□□ □□ □□□ □□□)□□ IP □□ □□ □□□□□ □□□□□□ IQN□ □□□□ □□ □□□ □□□□ □ □□□ □□□□□ □□□□□□□ □□□□□. CHAP □□□ □□□□ □□ □□ □□□ □□ □□□ □□□□□.

NEW QUESTION: 12

Nutanix □□□□□ □□□ □□□□□□ □□□□ □□□ □□□ □□□□□?

□□ □□: □ □□□ □□ □□ □□ □□□□ □□ □□ □□□ □□□□ □□ □□□ □
□□□□. □□ □□□ □□□ □□ □□□□. □□□□ □□□ □□□□ □□□ □□□ □□□□
□.

Answer Area

Procedure

Select the Gear icon at top right of the page

Step

Step 1
Step 2
Step 3
Step 4
Step 5
Step 6
Invalid Step

Select the component to upgrade

Step 1
Step 2
Step 3
Step 4
Step 5
Step 6
Invalid Step

Once the download completes, select Upgrade

Step 1
Step 2
Step 3
Step 4
Step 5
Step 6
Invalid Step

Log into Prism Central

Step 1
Step 2
Step 3
Step 4
Step 5
Step 6
Invalid Step

Select the User login name at the top right of the page

Step 1
Step 2
Step 3
Step 4
Step 5
Step 6
Invalid Step

On the left, select Upgrade Prism Central

Step 1
Step 2
Step 3
Step 4
Step 5
Step 6
Invalid Step

Click Download

Step 1
Step 2
Step 3
Step 4
Step 5
Step 6
Invalid Step

On the left under Settings, select Upgrade Software

Log in to Prism Element

- Step 1
- Step 2
- Step 3
- Step 4
- Step 5
- Step 6
- Invalid Step

- Step 1
- Step 2
- Step 3
- Step 4
- Step 5
- Step 6
- Invalid Step

Answer:

Procedure

Step

Select the Gear icon at top right of the page

- Step 1
- Step 2
- Step 3
- Step 4
- Step 5
- Step 6
- Invalid Step

Select the component to upgrade

- Step 1
- Step 2
- Step 3
- Step 4
- Step 5
- Step 6
- Invalid Step

Once the download completes, select Upgrade

- Step 1
- Step 2
- Step 3
- Step 4
- Step 5
- Step 6
- Invalid Step

Log into Prism Central

- Step 1
- Step 2
- Step 3
- Step 4
- Step 5
- Step 6
- Invalid Step

Select the User login name at the top right of the page

- Step 1
- Step 2
- Step 3
- Step 4
- Step 5
- Step 6
- Invalid Step

On the left, select Upgrade Prism Central

- Step 1
- Step 2
- Step 3
- Step 4
- Step 5
- Step 6
- Invalid Step

Click Download

- Step 1
- Step 2
- Step 3
- Step 4
- Step 5
- Step 6
- Invalid Step

On the left under Settings, select Upgrade Software

- Step 1
- Step 2
- Step 3
- Step 4
- Step 5
- Step 6
- Invalid Step

Log in to Prism Element

- Step 1
- Step 2
- Step 3
- Step 4
- Step 5
- Step 6
- Invalid Step

Procedure

Step

Select the Gear icon at top right of the page

- Step 1
- Step 2
- Step 3
- Step 4
- Step 5
- Step 6
- Invalid Step

Select the component to upgrade

- Step 1
- Step 2
- Step 3
- Step 4
- Step 5
- Step 6
- Invalid Step

Once the download completes, select Upgrade

- Step 1
- Step 2
- Step 3
- Step 4
- Step 5
- Step 6
- Invalid Step

Log into Prism Central

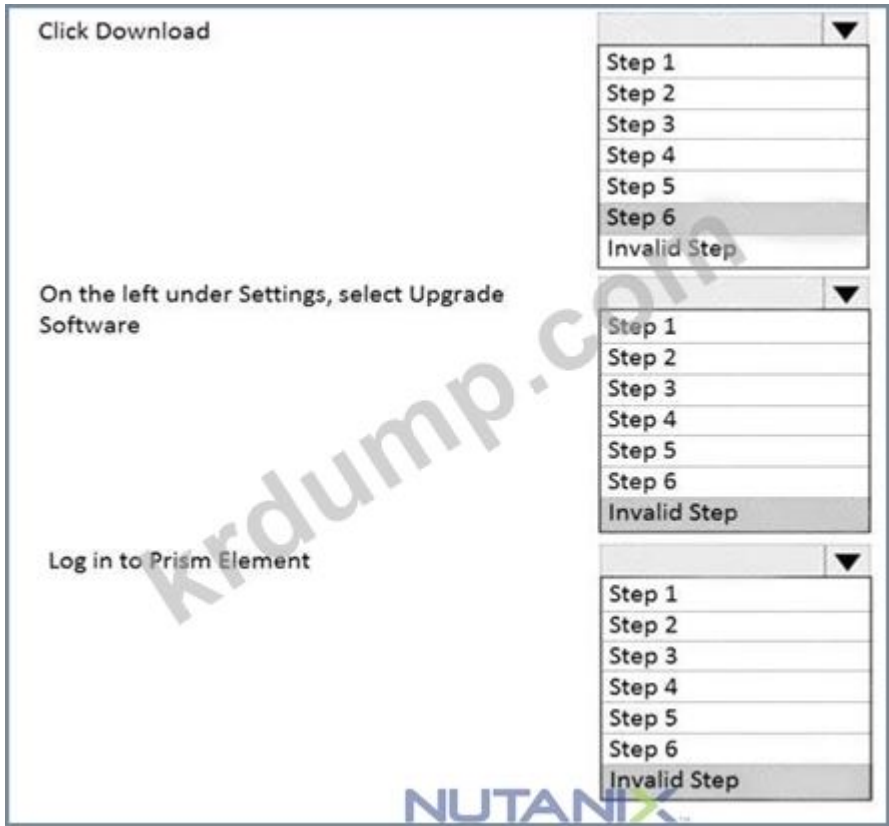
- Step 1
- Step 2
- Step 3
- Step 4
- Step 5
- Step 6
- Invalid Step

Select the User login name at the top right of the page

- Step 1
- Step 2
- Step 3
- Step 4
- Step 5
- Step 6
- Invalid Step

On the left, select Upgrade Prism Central

- Step 1
- Step 2
- Step 3
- Step 4
- Step 5
- Step 6
- Invalid Step



NEW QUESTION: 13

□□□□ 4□□ 16□□ Nutanix □□□□□ □□□□□. □ □□□□ PDU(Power Delivery Unit) □□□ □□□□□. □□ □□□ □□ □□ □□□ □□□□. □□□ □□ □□□ VM□ □□□□ □□ □□□□□. □□□□□ □□□ □□□ □□□ □□ □□□ □□□□□. □ □□□□□□ □□□ □□ □□□□□ Nutanix □□□ □□□□□?

- A. Nutanix □ □□□□ □□□
- B. □□ □□
- C. IO □□□□
- D. □□□ □□ □□

Answer: B ([LEAVE A REPLY](#))

NEW QUESTION: 14

□□□ □□ □□□, □□ □□□□□□□ SSL□ □□□□ □□□□. LDAP□ □□□□□ □□ □□ □□□ □□□□ □□□?

- A. 3268
- B. 636
- C. 389
- D. 3269

Answer: ([SHOW ANSWER](#))

NEW QUESTION: 15

Nutanix □□□□□□□ □□□ □□□ □ □□□ □□ □□ □□□ □□□□□?

- A. □□□ □□ □□ □□□ □□ NIC □□

- B. LACP
- C. NIC
- D.

Answer: A (LEAVE A REPLY)

:

<https://next.nutanix.com/blog-40/maximum-performance-from-acropolis-hypervisor-and-openvswitch-6312>

NEW QUESTION: 16

Nutanix storage controller (CVM) is connected to a storage array via Fibre Channel. Which storage protocol is used for data transfer between the CVM and the storage array? (2 correct answers.)

- A. NFS
- B. RSS (Remote Storage Services)
- C. iSCSI
- D. iSCSI

Answer: A,B (LEAVE A REPLY)

NCP-5.15 DumpTop NCP-5.15! DumpTop NCP-5.15, DumpTop NCP-5.15. DumpTop NCP-5.15. <https://www.dumptop.com/Nutanix/NCP-5.15-dump.html> (279 Q&As Dumps, **30%OFF Special Discount: KrDump**)

NEW QUESTION: 17

VMware ESX host is connected to a storage array via Fibre Channel. Which storage protocol is used for data transfer between the ESX host and the storage array? (2 correct answers.)

- A. AHV
- B. VM
- C. AHV
- D. VM

Answer: B,C (LEAVE A REPLY)

NEW QUESTION: 18

VMware ESX host is connected to a storage array via Fibre Channel. Which storage protocol is used for data transfer between the ESX host and the storage array? (2 correct answers.)

- A.
- B.
- C.
- D.

Answer: (SHOW ANSWER)

:

Shut down Nodes

Step 3
Step 4

	▼
--	---

Step 1
Step 2
Step 3
Step 4

Shut down Guest VMs

	▼
--	---

Step 1
Step 2
Step 3
Step 4

Stop the Cluster

	▼
--	---

Step 1
Step 2
Step 3
Step 4

Answer:

Procedure

Step

Shut down CVMs

	▼
Step 1	
Step 2	
Step 3	
Step 4	

Shut down Nodes

	▼
Step 1	
Step 2	
Step 3	
Step 4	

Shut down Guest VMs

	▼
Step 1	
Step 2	
Step 3	
Step 4	

Stop the Cluster

	▼
Step 1	
Step 2	
Step 3	
Step 4	

krdump.com

□□□□ CVM□ □□□□ □□□□□ □□□ □□ □□□?

- A. CVM□□ cvm_shutdown -P new □□□ □□□□□.
- B. IPMI □□□□ □□ □□ □□ □□□□ □□□□□.
- C. □□□□□ cvm_shutdown -P now □□□ □□□□□.
- D. IPMI □□□□ □□ Fever off Server□ □□□□□.

Answer: (SHOW ANSWER)

NEW QUESTION: 24

□□□□ □□□□□ 20,000□□ □□ □□□□ □□ □□ □□ □□□□ □□□ □□□□ □□□ □□. □□ □□ □□ □□□□□□ □□□ CPU□ □□ 100%□ □□□□□. □□□□ □ □□, □□ □□□□ □□ □□ □□□□□ □□ □□□ □□□ □□ □□□ □□□ □□□□ □□□.



□□□□ Prism Analysis Graphs□□ □□ □□□□ □□□□ □□□?

- A. □□□□ CPU □ □□□□
- B. □□□□ IO, CPU, □□□ □ □□□□□□ □ □ □□ CPU
- C. □□□□ IO, CPU, □□□, □□□□, □ □□ CPU
- D. □□□□ IO, □□□□, □□□□□□ □ □ □□ CPU

Answer: B (LEAVE A REPLY)

NEW QUESTION: 25

□□□□ 2MB □□□ I/O□ vDisk□ □□□□ □□ □□□□ SQL □□□□□ □□□□ □□□□. □□□□ □□□□ □□ □□□ □□□□□□ □□□. □□□ □□ □□□ □□□□ □□ □□□□ □□ □□□□ □□□ □□□ □□□□ □□□?

- A. □□□□ □□
- B. □□ □□ □□
- C. □□
- D. □□ □□ □□

Answer: C (LEAVE A REPLY)

NEW QUESTION: 26

□□□ □□□□□□.

Data Resiliency Status		
FAULT DOMAIN TYPE: HOST		
COMPONENT	FAILURES TOLERABLE	MESSAGE
Static Configuration	1	
Erasure Code Strip Size	1	
Stargate Health	1	
Metadata	1	
Opllog	1	
ZooKeeper	1	
Extent Groups	1	

Which two components have a failure tolerance of 3?

Zookeeper and Extent Groups have a failure tolerance of 1.

- A. Zookeeper = 1 and Extent Groups = 2
- B. Zookeeper = 2 and Extent Groups = 1
- C. Zookeeper = 1 and Extent Groups = 1
- D. Zookeeper = 2 and Extent Groups = 2

Answer: A (LEAVE A REPLY)

NEW QUESTION: 27

Which two components are not supported in AHV mode?

Stargate and Metadata are not supported in AHV mode.

Which two components are supported in AHV mode?

Procedure

Step

Shut down CVMs



▼

Step 1

Shut down Nodes

Step 2
Step 3
Step 4

Shut down Guest VMs

Step 1
Step 2
Step 3
Step 4

Stop the Cluster

Step 1
Step 2
Step 3
Step 4

Answer:

Procedure

Step

Shut down CVMs

	▼
Step 1	
Step 2	
Step 3	
Step 4	

Shut down Nodes
NUTANIX

	▼
Step 1	
Step 2	
Step 3	
Step 4	

Shut down Guest VMs

	▼
Step 1	
Step 2	
Step 3	
Step 4	

Stop the Cluster

	▼
Step 1	
Step 2	
Step 3	
Step 4	

□□:

<https://next.nutanix.com/how-it-works-22/scheduled-power-outage-relocating-cluster-hardware-if-you-need-to-shut-down-all-the-nodes-in-your-ahv-cluster-here-s-how-37326>

NEW QUESTION: 28

Nutanix □□□□□□ 4□□ □□□ □□□□ □□□□. □ □□□□□ 4□□ VM□ VM-VM □□ □□ □□□□ □□□□□□ □□ □□ □□□□ □□□□□□.

AHV □□□□□□ □□ □□□□□□ □□□ VM□ □□□ □□□?

A. □□□□□□ □□ □□□ □□ □□ □□□ □□ □□ □□□ □□□ □ □□ VM□ □□□□□□ □.

B. AHV □□ □□□□□□ □□□ 4□□ VM □□□ □□ □□□ □□□□□□.

C. □□□□□ □□□□□ □□□ □□□□□□ □□□ AHV □□ □□□□□□ □□□ □□□□□□.

D. VM□ □□□□□□ □□□ □□□□□□ 4□ □ 1□□ VM □□□ □□□□□.

Answer: ([SHOW ANSWER](#))

NEW QUESTION: 29

□□□□ 2.x 10 GBE □ 2.x □□□□□□ □□ □□□ □□ □□ □□□ AHV □□□□□ □□□ □. □□□ □□ □□□ □□ □□□□ □□□□□□ □□□□ VM□ □□ □□□ □□□□□ □□ □□.

□□□□ Nutanix □□ □□□ □□□□□ □□□□□ □□ □□□□ □□ □□ □□□ □□□□ □ □□?

- A. □ □□□□ □ □□ □□□□ □□□ □□□ 1GbE □□□□□□ □□□□□.
- B. virbr0□□ bond1□ □□□ VM □□□ □□ □□□ 1GbE □□□□□□ □□□□□.
- C. □ □□□□ br0□ □ □□ □□□ □□□□ 1GbE □□□□□□ □□□□□.
- D. 10GbE □ 1GbE □□□□□□ □□□□ □□□ VLAN□ □□□□.

Answer: ([SHOW ANSWER](#))

NEW QUESTION: 30

□ □□□ □□□□ □ □□□□ cli□ □□□□□□? (□□□□□ □□)

- A. □□□
- B. bash □
- C. □□□
- D. ncli

Answer: D ([LEAVE A REPLY](#))

NEW QUESTION: 31

□□□ VM□ □ □□ □□ □□□□□ □□ □□□ □□□ □ □□□ □□□. Nutanix □□□□□ □□ □□ □□□ □□□□□?

- A. □□□□ RF 3 □ □□□□ RF 2□ □□ □□ 3□
- B. □□□□ RF 2 □ □□□□ RF 3□ □□ 5□ □□
- C. □□□□ RF 3 □ □□□□ RF 3□ □□ 5□ □□
- D. □□□□ RF 3 □ □□□□ RF 3□ □□ 3□□ □□

Answer: ([SHOW ANSWER](#))

NCP-5.15 □□ □□□ □□□□□ □□ DumpTop □□ □□□□ □□□ NCP-5.15 □□! DumpTop □ □□ **NCP-5.15** □□ □□□ □□□□□□, DumpTop NCP-5.15 □□ □□□ □□ □□□□□□ □□□ □□□□□□□. □□□□□ □□□ □□□□ □□ DumpTop NCP-5.15 □ □□ □□□□□. <https://www.dumptop.com/Nutanix/NCP-5.15-dump.html> (279 Q&As Dumps, **30%OFF** Special Discount: **KrDump**)

NEW QUESTION: 32

□□□ □□□□□.



Which of the following is a valid host configuration for a Nutanix host? (Select two)

Prism Element is installed on a host with the following configuration:

- A. 4 vCPUs, 16 GB RAM, 1 TB storage
- B. 4 vCPUs, 16 GB RAM, 1 TB storage
- C. 4 vCPUs, 16 GB RAM, 1 TB storage
- D. 4 vCPUs, 16 GB RAM, 1 TB storage

Answer: C (LEAVE A REPLY)

NEW QUESTION: 33

60 minutes RPO is required for a workload (LWS) on a Nutanix host. Which of the following is the correct configuration for the LWS?

- A. 10 minutes RPO, 100 GB storage
- B. 10 minutes RPO, 100 GB storage
- C. 10 minutes RPO, 100 GB storage
- D. Nutanix host, 100 GB storage

Answer: (SHOW ANSWER)

NEW QUESTION: 34

Which of the following is a valid configuration for a Nutanix host? (Select two)

- A. 4 vCPUs, 16 GB RAM, 1 TB storage
- B. 4 vCPUs, 16 GB RAM, 1 TB storage
- C. 4 vCPUs, 16 GB RAM, 1 TB storage
- D. VM host, 100 GB storage

Answer: (SHOW ANSWER)

NEW QUESTION: 35

Which of the following is a valid configuration for a Nutanix host? (Select two)

- A. 4 vCPUs, 16 GB RAM, 1 TB storage

- B. □□ □□ □□□□ □□ □□□□ □□□□□□.
- C. □□ □□□□ □□□□□□.
- D. □□ □□□□□□ □□ □□ □□□□ □□□□□□.

Answer: C,D (LEAVE A REPLY)

□□

<https://portal.nutanix.com/page/documents/details/?targetId=Web-Console-Guide-Prism-v55:wc-dr-management>

NEW QUESTION: 40

Leap □□ □□□ □□□□ □□□□ □□□□□?

- A. □□□□ □□
- B. □□□□ VM
- C. □□□ □□
- D. □□□ □□□

Answer: D (LEAVE A REPLY)

□□

* □□ □□ - Prism Central □□ Xi Leap □□ □□□ □□□ □□ □□□(Nutanix □□□□)□ □□□□. □□□□□ □□ □□□ □□□ □□□ □□, □□□ □□ □□ □□□ □□□ □□□□□ □□□ □ □□□□. □□ □□ - □□□ □□ □□(RPO, □□)□□ □□ □□□ □□□ □□ □□ □□ □□ □□

<https://vmwaremine.com/2019/02/08/nutanix-leap-runbooks-part-1/#sthash.VwrzSzhQ.dpbs>

NEW QUESTION: 41

AHV□□ virbr0 □□□□ □□□ □□□□□□?

- A. □□□ VM□ □□□□ □□□□ □□ □□ □□□□ □□□□□□.
- B. □□□ VM□ CVM □□ □□ □ □□□□ □□□ □□□□□□.
- C. □□□ VM□ AHV □□□ □□ □□ □ □□□□ □□□ □□□□□□.
- D. □□□ VM□ CVM □□ □□□□ □□□ □□□□ □□

Answer: C (LEAVE A REPLY)

□□

[http://www.vstellar.com/2019/01/10/ahv-networking-part-1-basics/#:~:text=AHV%20Network%20Architecture&text=virbr0%20is%20an%20internal%20switch,virbr0\)%2](http://www.vstellar.com/2019/01/10/ahv-networking-part-1-basics/#:~:text=AHV%20Network%20Architecture&text=virbr0%20is%20an%20internal%20switch,virbr0)%2)

NEW QUESTION: 42

□□□□ VM□ Volumes□ □□□□□□ □□□. iSCSI □□□□ □□ VM□ □□ □□□□□□ □□□□ □□□□?

- A. □□□□ VM □□□□□
- B. □□ □□□□□
- C. □□□□□ □□□□□
- D. □□ □□□□□

Answer: ([SHOW ANSWER](#))

NEW QUESTION: 43

Which Prism Element Life Cycle Management (LCM) task is used to perform inventory on a host? (2 points)

- A. Prism Element Life Cycle Management Perform Inventory Enable LCM Auto Inventory
- B. Prism Element Life Cycle Management Perform Inventory LCM Auto Inventory Daily
- C. Prism Element Life Cycle Management Perform Inventory Enable LCM Auto Inventory
- D. Prism Central Life Cycle Management Perform Inventory Enable LCM Auto Inventory

Answer: C ([LEAVE A REPLY](#))

NEW QUESTION: 44

Which Nutanix AHV feature is used to manage VM placement? (2 points)

- A. AOS
- B. VM Placement Intelligence
- C. VM Placement
- D. Prism Element VM Placement

Answer: A ([LEAVE A REPLY](#))

Links:

<https://next.nutanix.com/prism-infrastructure-management-26/all-things-considered-upgradesequence-and-prep>

<https://www.nutanix.com/blog/advanced-vm-placement-intelligence-allows-vms-focus-runningworkloads>

NEW QUESTION: 45

Which Prism Element task is used to manage VM IP addresses? (2 points)

Which Prism Element task is used to manage VM IP addresses? (2 points)

- A. IP Management
- B. VM NIC Management
- C. IP Management
- D. VM Management

Answer: B,D ([LEAVE A REPLY](#))

Links:

https://portal.nutanix.com/page/documents/solutions/details/?targetId=BP-2029_AHV:BP-2029_AHV

Prism Element VM Management tasks are used to manage VM IP addresses.
VM Management tasks are used to manage VM IP addresses.
VM Management tasks are used to manage VM IP addresses.
VM Management tasks are used to manage VM IP addresses.

Acropolis □□□□ □□□□ VM NIC□ □□□ □ □□ □□□ IP □□□ □□□□□. VM NIC □ □ VM□ □□□□ □□□ □□ □□ □□□□□.

NEW QUESTION: 46

□□□□ □□□□□ □□ □□□□ VM□ □□□ □□□□ □□□ □□□□□. □□□□ □□ □ □□□□ □□□ □□□□ □ □□□ □□□□□. □□□□□□ □□ VM□□ □□ VM□□ □□ □ □□ □□□□ □□□□ □□□□.

□□□□ □ □□□ □□□ □□□□ □□□□?

- A. VM□ □□ □□□□ □□□□□□□□□□.
- B. VM□ □□□□ □□□□□.
- C. CVM□ □□□□ □□□□□.
- D. VM□ □□□ □□□ □□ □□□□□.

Answer: A (LEAVE A REPLY)

NCP-5.15 □□ □□□ □□□□□ □□ DumpTop □□ □□□□ □□□ NCP-5.15 □□!
DumpTop □ □□ **NCP-5.15** □□ □□□ □□□□□□□, DumpTop NCP-5.15 □□ □□□ □□ □□□□□□ □□□ □□□□□□□□. □□□□□ □□□ □□□□□ □□ DumpTop NCP-5.15 □ □□ □□□□□. <https://www.dumptop.com/Nutanix/NCP-5.15-dump.html> (279 Q&As Dumps, **30%OFF Special Discount: KrDump**)

NEW QUESTION: 47

□□□□ Prism UI □□□□ □□□□ □□ □□ □□ □□□ □□□□□.

□□ □□ □□□ □ □□□□□?

- A. 60
- B. 15
- C. 120
- D. 30

Answer: B (LEAVE A REPLY)

NEW QUESTION: 48

UEFI □□□□□ □□□ VM□ Nutanix Hyper-V □□□□□□ AHV□ □□□□□□□□ □ □□ □ □ □□ □□□ □□□□□□?

- A. □□□□ □□
- B. □□□□ vMotion
- C. □□□ □□□□□□□
- D. □□□□ □□

Answer: D (LEAVE A REPLY)

NEW QUESTION: 49

Which of the following is a valid Nutanix Prism Central alert type?

Which of the following is a valid Nutanix Prism Central alert type?

- A. Health Check Log Collector
- B. Health Check CSV
- C. Health Check
- D. Health Check

Answer: C (LEAVE A REPLY)

URL:

<https://portal.nutanix.com/page/documents/details?targetId=Prism-Central-Guide-Prism-v55:mulalerts-managem>

NEW QUESTION: 50

Which of the following is a valid Nutanix Prism Central alert type?

- A. Health Check
- B. Health Check
- C. Prism Central
- D. Health Check

Answer: A (LEAVE A REPLY)

URL:

<https://portal.nutanix.com/page/documents/kbs/details/?targetId=kA00e000000LMgICAW>

<https://portal.nutanix.com/page/documents/details/?targetId=Web-Console-Guide-Prism-v511:wc-cluster-expand>

<https://stonefly.com/blog/storage-snapshot-technology-techniques-and-details> AOS

Which of the following is a valid Nutanix Prism Central alert type?

NEW QUESTION: 51

Which of the following is a valid Nutanix Prism Central alert type?

- A. VM Health
- B. Prism Health
- C. Health Check
- D. Health Check

Answer: A (LEAVE A REPLY)

NEW QUESTION: 52

Which of the following is a valid Nutanix Prism Central alert type?

- A. IP
- B. VM NIC

C. IP address is not correct.

D. VM is not correct.

Answer: B,D (LEAVE A REPLY)

□□

https://portal.nutanix.com/page/documents/solutions/details/?targetId=BP-2029_AHV:BP-2029_AHV

□□□□ Acropolis IPAM □□ □□□□ □□□

Prism □□□□□□□ □□□□ □□□ □□□ □□□ □□□ □□□ □□□□. . □ □

□□ VM □□□□□ □ □□□□ □□ □□□ □□□ □□□ □□□□ □□□ □□□□□

□□□□□□. □□ □□□ □□□□□ IPAM □□□ □□□□□ □□ □□□□ □□ □□□□

VM□ □□ □□ □□□ □□□□ □□□.

Acropolis □□□□ □□□□ VM NIC□ □□□ □ □□ □□□ IP □□□ □□□□□. VM NIC □

□ VM□ □□□□ □□□ □□ □□ □□□□□.

NEW QUESTION: 53

□□□□ □□ □□□ □□□□□ □□□□ □□ □□□□ □□□□.

□□□ □□□ □□ □□ □□□ □□□□ □□ □□□□ □□ □□□ □□□ □□□?

A. Prism Web Console□□ □□ □□□ □□□ URL□ □□□□□.

B. ncc □□□ □□□□ CVM CLI□□ □□□ □□ □□□□□.

C. □□ □□□ □□□□ □□ □□□□ Nutanix □□□□ □□□□□.

D. CVM□□ ncli □□□ □□□□ □□ □□ □□□ □□□.

Answer: B (LEAVE A REPLY)

□□: <https://portal.nutanix.com/page/documents/kbs/details?targetId=kA00e000000CsINCAS>

NEW QUESTION: 54

* □□□□□ 2□□ □□□□□ □□ 20□ □□□

* □□□ 2□□ □□□□□ □□ 20□ □□□

* □□□ 2□□ □□□□□ □□ 30□ □□□

HQ □ □□ □□□ □□□ □□□ □□□□.

□□□□ □□ HQ □□□ □□□□ □□□□ □□ Witness VM□ □□ □□ □□□□□?

A. 2

B. 3

C. 4

D. 1

Answer: (SHOW ANSWER)

NEW QUESTION: 55

□□□□ □□□ □□□□□ □ □□□□ □□ IOP □□□ □□□ □□□ □□□□.

□ □□ □□□ □□□□ □□ □□□□ □□ □□□ □□□□□?

A. □□ □□

B. □□ □□

C. □□□ □□

D. 1000 100

Answer: C ([LEAVE A REPLY](#))

NEW QUESTION: 56

Leap 10 10000 10000 Prism Central 100000 10000

A. 100 1000 100

B. 1000 10000 100

C. 100 1000 100

D. AHV 100000 100

Answer: A ([LEAVE A REPLY](#))

NEW QUESTION: 57

10000 1000 100 1000 100000.

1000 100000?

A. 1000 10000 100 1000 100000.

B. AQS 10000 100 100 100 1000 1000 100000.

C. 10000 VM CPU 100 100.

D. SSD 1000 1000 1000 100 100000 100000.

Answer: C ([LEAVE A REPLY](#))

NEW QUESTION: 58

10000 nutanix 100000 100000 1000000000 100000. Nutanix 100000 1000 100000 10000 10000 100 SSD 10000 10000 100000 100000 10000 75% 100 1000 10000 100000.

100 DSF(Distributed Storage Fabric) 1000 1000 1000000?

A. ILM(100 10000 100)

B. 1000 100 1000

C. 1000 100 2(RF2)

D. 100 100 1000 100 100

Answer: B ([LEAVE A REPLY](#))

NEW QUESTION: 59

1000 VM 10 100 100 100000 100 1000 10000 10000 10000.

Nutanix 100000 100 100 1000 1000000?

A. 10000 RF 3 10 10000 RF 3 100 50 100

B. 10000 RF 2 10 10000 RF 3 100 50 100

C. 10000 RF 3 10 10000 RF 3 100 100 30

D. 10000 RF 3 10 10000 RF 2 100 100 30

Answer: A ([LEAVE A REPLY](#))

NEW QUESTION: 60

Prism Central □□□ □□□ □ □□ □□ □□□□□ □□□□□? (3□□ □□□□□.)

- A. Prism Elements □ Prism Central□ □□□□ □□□□ □□□□.
- B. □□□ □□□□ □□ □□□ □□□□□.
- C. □□□□ □□□□ □□□□ □ □□□□.
- D. □□ □□ □□□□ Prism Elements □ Prism Central □□.
- E. □□□ 192.168.5.0/24 CVM □□ □□□□□ □□□□□.

Answer: B,C,E ([LEAVE A REPLY](#))

NEW QUESTION: 61

□□□□ □ VM□ □□□□ □□□□□ □□ □□□□ □ □□□□. □□□□ VM □□□□□□ □□□ □□ □□□ OS□ □□□□ □□□ □ □□□□. □□□ 127.0.0.x □□□ ping□ □ □□ □□.

□□□□ □□ □□□ □□□□□?

- A. VM□ □□ □□□ □□□□ □□□ □□□.
- B. VLAN □□□ □□□□□□□□.
- C. □□□ VM □□□□ □□□□□ SSH □□□ □□□□ □□□□.
- D. □□□□□ □□□□□ □□□□.

Answer: B ([LEAVE A REPLY](#))

NCP-5.15 □□ □□□ □□□□□ □□ DumpTop □□ □□□□ □□□ NCP-5.15 □□! DumpTop □ □□ **NCP-5.15** □□ □□□ □□□□□□□, DumpTop NCP-5.15 □□ □□□ □□ □□□□□□ □□□ □□□□□□□□. □□□□ □□□ □□□□ □□ DumpTop NCP-5.15 □ □□ □□□□□. <https://www.dumptop.com/Nutanix/NCP-5.15-dump.html> (279 Q&As Dumps, **30%OFF Special Discount: KrDump**)

NEW QUESTION: 62

□ □□□ □□ AOS □□□ □□ □ □□ □□ □ □□□□ □□□ □□□□□?

- A. □□□ □□□□ □□□ □□□□□ □□□ □□□□ □□□.
- B. □□□ □□□□ □□□□ □□ □□□ Foundation□ □□□□ □□□□ □□□□□ □□□.
- C. □□ □□□□□ □□ □□□ □□□□ □□□□□□□□□.
- D. □□□ □□ □□□□□□ □□ □□ □□□□□□ □□□□ □□□□ □□ □□□□□□□□.

Answer: B ([LEAVE A REPLY](#))

NEW QUESTION: 63

Stargate □□□□ AHV □□□ □□ CVM□□ □□□ □ □□ □□□. □□□□□□□ I/O □□□ □□ □□□□ □ □□□□ □□ □□□□□?

- A. □□□□□□ HA
- B. □□ □□
- C. iSCSI □□□□

D. ha.py

Answer: C (LEAVE A REPLY)

NEW QUESTION: 64

Nutanix □□□□□ □□□ □ □□ □□□□ □□□□□?

A. □□□ □□ □□□□□ DoD 5220.22-M □□□□ □□□□ □□ □□□□ □□□□□.

B. □□□□□ □□□ □ □□ □□□ VM □□□□ □□□ □ □□□□. □□□□ □□ □□□□ □□□□□.

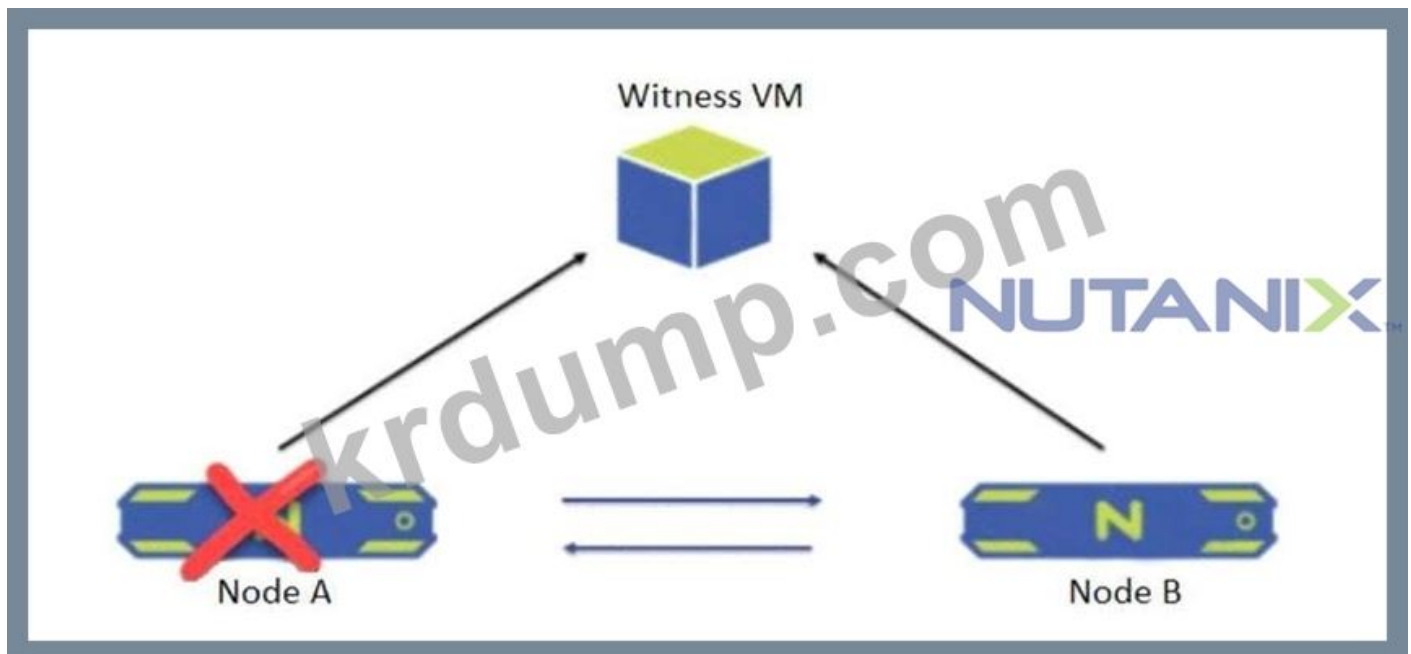
C. □□□□□ □□ □□□ □□ □□ □□□□ □□□□□.

D. □□□ □□ □□□□□ Common Criteria EAL 2+ □□□□ □□□□□.

Answer: C (LEAVE A REPLY)

NEW QUESTION: 65

2□□ ROBO □□□□□ □□ VM□□ □□□□□.



□□ A□ □□□□ □□□ □□□?

A. □□ B□ □□ □□ □ □□□□ □□□□ □□ □□□ □□□.

B. □□□□□ □□□ □□ □□□ □□□ □□□ □□□□ □□□□.

C. □□□□□ □□□ □ □□ □□ □□ □□ □□□ □□□.

D. □□ B□ □□ VM□ □□□ □□□ □□□ □□ □□ □□□ □□□□□.

Answer: D (LEAVE A REPLY)

NEW QUESTION: 66

□□□□ 24□□□□□ □□ □□□ □□□□□ Prism□□ □□ □□□ □□ □□□?

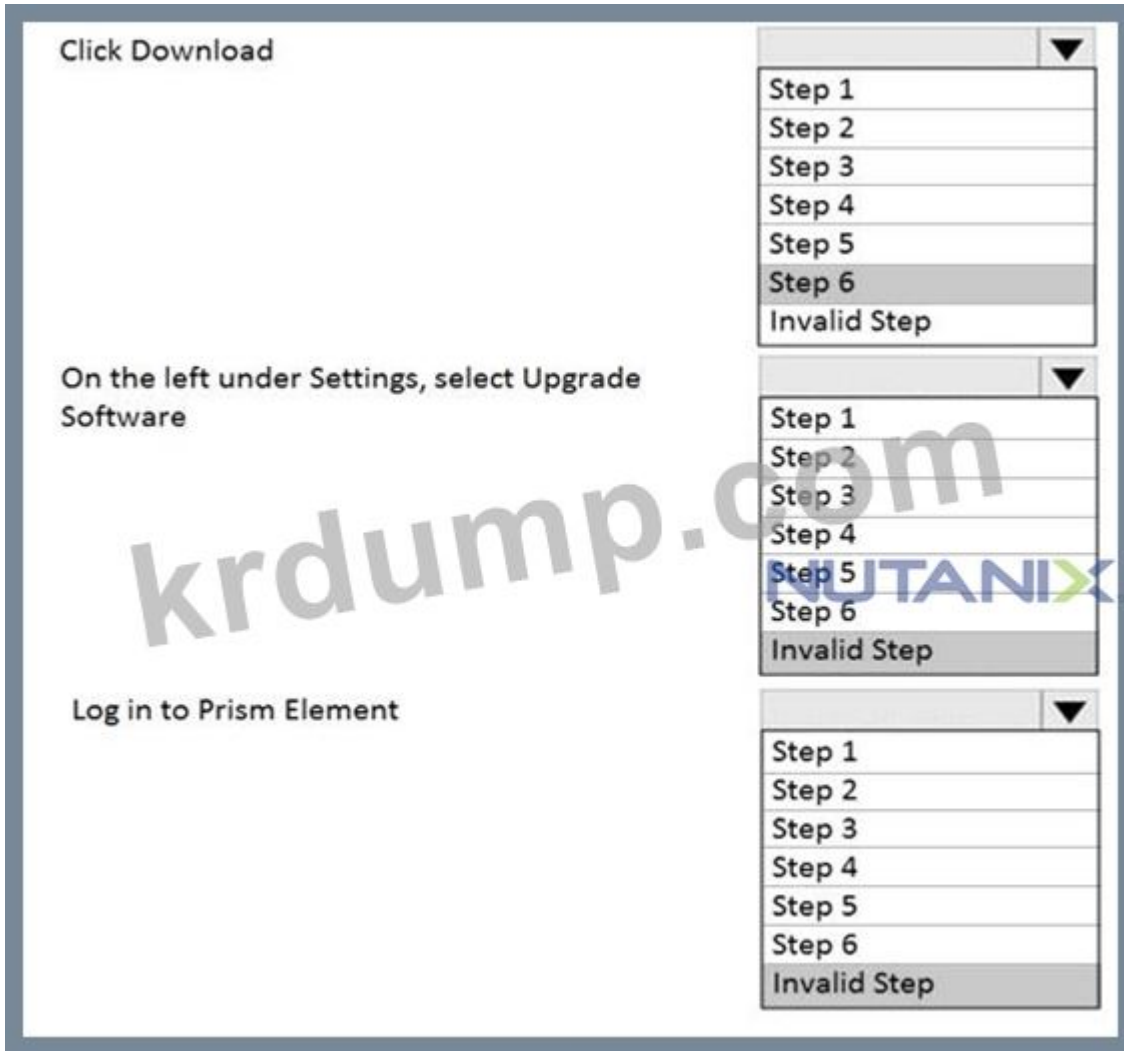
A. □□□ □□

B. □□ □□

C. □□□ □□□□□

D. SNMP

Answer: (SHOW ANSWER)



NEW QUESTION: 68

Which of the following is a valid Nutanix AOS upgrade path?

- A. 5.15 to 5.16 to 5.17 to 5.18 to 5.19 to 6.0
- B. 5.15 to 5.16 to 5.17 to 5.18 to 5.19 to 6.0 to 6.1
- C. 5.15 to 5.16 to 5.17 to 5.18 to 5.19 to 6.0 to 6.1 to 6.2
- D. 5.15 to 5.16 to 5.17 to 5.18 to 5.19 to 6.0 to 6.1 to 6.2 to 6.3

Answer: ([SHOW ANSWER](#))

□□

<https://portal.nutanix.com/page/documents/details/?targetId=Web-Console-Guide-Prism-v511:wc-cluster-expand>

NEW QUESTION: 69

Which of the following is a valid Nutanix VMDK format? (2 correct answers)

- A. VHDX
- B. VMDK
- C. ISO
- D. VMDK
- E. QCOW2

Answer: B,C ([LEAVE A REPLY](#))

NEW QUESTION: 70

Microsegmentation is a key feature of Nutanix Prism Central. Which of the following are supported by Prism Central for VM microsegmentation?

Which of the following are supported by Prism Central for VM microsegmentation?

- A. OpenLDAP
- B. Active Directory
- C. Active Directory Federation Services
- D. Active Directory Lightweight Directory Services

Answer: ([SHOW ANSWER](#))

NEW QUESTION: 71

Which of the following are supported by Prism Central for VM microsegmentation?

- A. Active Directory
- B. Active Directory Federation Services
- C. Active Directory Lightweight Directory Services
- D. Active Directory Certificate Services

Answer: B ([LEAVE A REPLY](#))

NEW QUESTION: 72

Which of the following are supported by Prism Element for user management?

- A. OpenLDAP
- B. Active Directory
- C. Active Directory Federation Services
- D. Active Directory Lightweight Directory Services

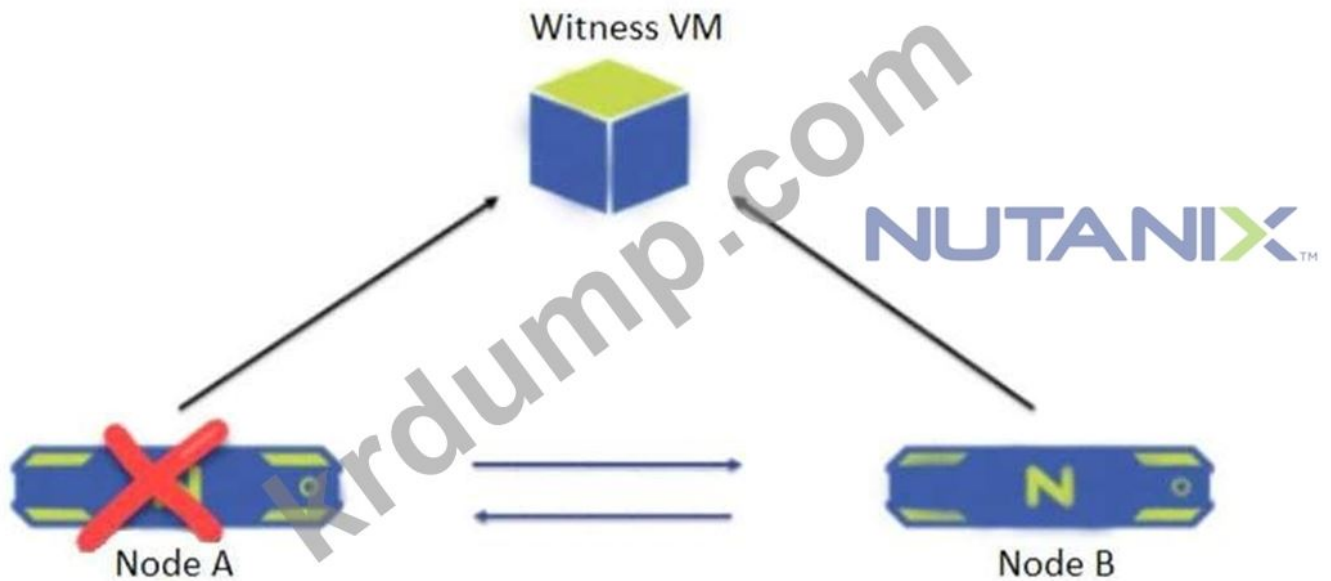
Answer: ([SHOW ANSWER](#))

Link:

<https://next.nutanix.com/prism-infrastructure-management-26/user-management-and-ldap-setup-in-prism-element>

NEW QUESTION: 73

Which of the following are supported by Prism Central for VM microsegmentation?



□□ A□ □□□□ □□□ □□□?

- A. □□ B□ □□ VM□ □□□ □□□ □□□ □□ □□ □□□ □□□□□.
- B. □□ B□ □□ □□ □ □□□□ □□□□ □□ □□□ □□□.
- C. □□□□□ □□□ □□ □□□ □□□ □□□ □□□□ □□□□□.
- D. □□□□□ □□□ □ □□ □□ □□ □□ □□□ □□□.

Answer: A ([LEAVE A REPLY](#))

NEW QUESTION: 74

□□□□ VM□ □□ □□□ CD□ □□□□ □□□. □□□□ VM□ □□□□□ □□□□ □□□ □□□ □□□□ □□ □□□ □□□□ □□□□□. □□ □□□ CD□ □□□□ □□□ □ □□□ □.

□□□□ □□ □□□ □□□□□?

- A. CD-ROM □□□□□□ □□ □□□□.
- B. □□□□ CD□ □□□□ □□ □□□ □□□□ □□□□□□.
- C. VM□ □□ □□□□ □□□□ □□□ CD□ □□□ □ □□□□.
- D. □□ □□□ CD □□□□□ □□ □ □□□□□□□.

Answer: B ([LEAVE A REPLY](#))

□□:

<https://next.nutanix.com/prism-infrastructure-management-26/booting-vm-to-cd-no-drives-present-31800>

NEW QUESTION: 75

□□□□ □□ □□□□□□ □□□ □□□□ □□ □□ □□□□ □□□□ □□□□. Nutanix□ □□ □□ □ □□ □□□ □□ VM□ □□□□ □ □□ □□□□□ □□□□□□?

- A. □□ □□ □□
- B. □□□ □□□
- C. □□□□□□ □

D. □□□ □□ □□

Answer: D ([LEAVE A REPLY](#))

NEW QUESTION: 76

□□ □□□□□□ □□□ □ □□ 2□□ □□□ □□□ □□□□□□? (2□ □□)

A. □□ □□ □□

B. □□□(vm, □□□, □□□, □□□ □)

C. □□□(IOPS, □□ □□ □).

D. □□ □ □□

Answer: B,C ([LEAVE A REPLY](#))

NCP-5.15 □□ □□□ □□□□□ □□ DumpTop □□ □□□□ □□□ NCP-5.15 □□!
DumpTop □ □□ **NCP-5.15** □□ □□□ □□□□□□, DumpTop NCP-5.15 □□ □□□ □□
□□□□□□ □□□ □□□□□□□□. □□□□ □□□ □□□□ □□ DumpTop NCP-5.15 □
□□ □□□□□. <https://www.dumptop.com/Nutanix/NCP-5.15-dump.html> (279 Q&As Dumps,
30%OFF Special Discount: KrDump)

NEW QUESTION: 77

AHV□□ virbr0 □□□□ □□□ □□□□□□?

A. □□□ VM□ □□□□ □□□□ □□ □□ □□□□ □□□□□□.

B. □□□ VM□ CVM □□ □□ □ □□□□ □□□ □□□□□□.

C. □□□ VM□ AHV □□□ □□ □□ □ □□□□ □□□ □□□□□□.

D. □□□ VM□ CVM □□ □□□□ □□□ □□□□□ □□

Answer: C ([LEAVE A REPLY](#))

[http://www.vstellar.com/2019/01/10/ahv-networking-part-1-basics/#:~:text=AHV%20Network%20Architecture&text=virbr0%20is%20an%20internal%20switch,virbr0\)%20have%20IP%20%20192.168.](http://www.vstellar.com/2019/01/10/ahv-networking-part-1-basics/#:~:text=AHV%20Network%20Architecture&text=virbr0%20is%20an%20internal%20switch,virbr0)%20have%20IP%20%20192.168.)

NEW QUESTION: 78

□□□□ □□ □□ □□□ □□□□ □□□ □ □□ □ □□ □□□□□□ □□□□□□? (3□ □□)

A. BIOS

B. AOS

C. □□□□□□

D. BMC

E. HBA □□□

Answer: ([SHOW ANSWER](#))

NEW QUESTION: 79

NEW QUESTION: 83

- Nutanix □□□□□ □□□□ □□□□□ □□□.
- □□ □□□ VM□ □□□ □ □□□□ □□ □□□ □□□□ □□□□?
- A. CVM□□ □□□□ □□ □□□ □□□□□.
 - B. □ □□□□ □□ □□ □□□ □□
 - C. □□□ □□ □□ □ CVM IP □□ □□
 - D. CVM□□ cluster restart_genesis □□□ □□□□□.

Answer: A ([LEAVE A REPLY](#))

NEW QUESTION: 84


Nutanix □□□□□ □□□ □□□□□□ □□□□ □□□ □□□ □□□□□□?

□□ □□: □ □□□ □□ □□ □□ □□□ □□□□ □□ □□ □□□ □□□□ □□ □□□ □

□□□□. □□ □□□ □□□ □□ □□□□. □□□□ □□□ □□□□ □□□ □□□ □□□□

□.

Answer Area

Procedure	Step
Select the Gear icon at top right of the page	<ul style="list-style-type: none">Step 1Step 2Step 3Step 4Step 5Step 6Invalid Step
Select the component to upgrade	<ul style="list-style-type: none">Step 1Step 2Step 3Step 4Step 5Step 6Invalid Step
Once the download completes, select Upgrade	 <ul style="list-style-type: none">Step 1Step 2Step 3Step 4Step 5Step 6Invalid Step
Log into Prism Central	<ul style="list-style-type: none">Step 1Step 2Step 3Step 4Step 5Step 6Invalid Step
Select the User login name at the top right of the page	<ul style="list-style-type: none">Step 1Step 2Step 3Step 4Step 5

On the left, select Upgrade Prism Central

Click Download

On the left under Settings, select Upgrade Software

Log in to Prism Element

Step 6
Step 6
Invalid Step

Step 1
Step 2
Step 3
Step 4
Step 5
Step 6
Invalid Step

Step 1
Step 2
Step 3
Step 4
Step 5
Step 6
Invalid Step

Step 1
Step 2
Step 3
Step 4
Step 5
Step 6
Invalid Step

Answer:

Answer Area

Procedure

Select the Gear icon at top right of the page

Select the component to upgrade

Once the download completes, select Upgrade

Log into Prism Central

Step

Step 1
Step 2
Step 3
Step 4
Step 5
Step 6
Invalid Step

Step 1
Step 2
Step 3
Step 4
Step 5
Step 6
Invalid Step

Step 1
Step 2
Step 3
Step 4
Step 5
Step 6
Invalid Step

Select the User login name at the top right of the page

On the left, select Upgrade Prism Central

Click Download

On the left under Settings, select Upgrade Software

Log in to Prism Element

NEW QUESTION: 85

Which of the following is not a supported operating system for Nutanix Prism Element?

- A. CentOS
- B. Ubuntu
- C. Red Hat
- D. CentOS

Answer: D (LEAVE A REPLY)

□□

* OpenLDAP: OpenLDAP is a Lightweight Directory Access Protocol (LDAP) implementation. It is a free and open-source software project. OpenLDAP is a directory service that provides a central repository for user information and other data. Nutanix uses OpenLDAP for authentication and authorization.

Which of the following is a benefit of using a virtual switch?

- A. It allows for multiple virtual machines to share a single physical network interface card.
- B. It simplifies network configuration and management.
- C. It provides better performance than a physical switch.
- D. It allows for easier integration with virtual machines.

Answer: (SHOW ANSWER)

NEW QUESTION: 103

Which of the following is a benefit of using a virtual switch in a Nutanix environment?



Which of the following is a benefit of using a virtual switch in a Nutanix environment? (3 correct answers)

- A. It allows for multiple virtual machines to share a single physical network interface card.
- B. 10Gb network speeds are supported.
- C. It can be configured with various load balancing algorithms like balance-slb and balance-tcp.
- D. VLAN IDs can be assigned to virtual machines.
- E. It allows for easier integration with virtual machines.

Answer: B,C,D (LEAVE A REPLY)

NEW QUESTION: 104

Which of the following is a benefit of using the Prism Rest API Explorer?

- A. It allows for easier integration with virtual machines.
- B. It simplifies network configuration and management.
- C. It provides better performance than a physical switch.
- D. It allows for multiple virtual machines to share a single physical network interface card.

Answer: C (LEAVE A REPLY)

NEW QUESTION: 105

Which of the following is a benefit of using a virtual switch in a Nutanix environment?

- A. It allows for multiple virtual machines to share a single physical network interface card.
- B. It simplifies network configuration and management.
- C. It provides better performance than a physical switch.
- D. SNMP is supported.

Answer: (SHOW ANSWER)

□□

https://portal.nutanix.com/page/documents/details/?targetId=Prism_Central_Guide-

Acr_v4_6:mul_alerts_manag Prism Central□□ Prism Central□□ □□□ □□ □□□□ □□□

□ □□□□. □□ □□, □□ □□ □ □□□ □□□□ □□□□□ □□□ □□□□□□.

□□: Prism Central□□ □□ □□ □□□□ Prism □ □□□ □□ □□ □□□□□ □□□□ □

□□ □□ □□□□ □□□□□. □ □□ □ □□□□□□ □□□□ □□ □□□.

Prism Central □□ □□□□ □□□□□ □□□□□ □□ □□□□. □□□□□ □□□□□ □□

□(Nutanix □□ □□ □/□□ □□□□ □□□ □□)□ □□□□ □□□.

* □□ □ □□□ □□□□□.

* □ □□□ □□□□ □□□ □□□ □□□□ □□ □□□ □□□ □□□□□.

* □□ □□□□□□

□□ □□□ □□ □□ □□□□□.

* □□ □□ □□□□ □□□ □□□□□.

* Prism Central □□□

* □□□□ □□□ □□□ □□□□ □□□□ □□□ □□ □□□□ □□□□□□.

* □□□ □ □ □□(24□□) □□ □□□ □□□□ □□□ □□ □□ □□□ □□□□□.

□□ □□ □ □□ □□□ □□ □□□ □ □□□□. □ □□ □□ □□□□ □□□ Prism Central□

□ □□ □□□□ □□□ □□□□.

* Nutanix □□ □□□ □□ □□□ □□□□ Nutanix □□ □□□ □□□□□□.

* □□ □□□□ □□ □□□ □□□□ Nutanix □□ □□ □□ □□□ □□□ □□□ □□□ □□

□ □□□ □□□□□□.

* □□ □□□ □□□□ □□□ □□□□□ □□ □□□ □□□□□□(□□ □□ □□□ □□□□

□□ □□□□ □□ □□□ □□□□□□).

□□ □□ □□□□ □□ □□ □□ □□□ □□□□□. □ □□□ SMTP □□□ □□ □□□□□

□ □□□□□. □□ □□ □□□ □□□□ SMTP □□ □□ □□ □□□□.

NEW QUESTION: 106

20□□ □□ AHV VM□ □□□□ □□ □□□□ □□□ □□□□□?

A. Postman □ REST API□ □□□□ □□□□□ □□□□□.

B. PowerCLI□ □□□□ VM□ □□□□ □□□□□ □□□□□.

C. Prism Element□□ □ VM□ □□□□ □□□□□.

D. Prisa Central□□ □□ VM□ □□□□ □□□ □□□□□.

Answer: D (LEAVE A REPLY)

□□□ □□□□ □□□□ □□□ □□ □□□□□ □□□□ □□ □ □□□□ □□□□□□ □□
□□ □□□□□. □□ □□ □□□ □□□□□ □ □□ □□□□ □□□□□□□ □□□ □□
□□ □□ □□□ □□□ □□□□□.

NEW QUESTION: 110

□□□□□ CVM□ □□□□□ □ CVM □□ □□ □□ □□□ □□□□ □□□ □□ □□□□□
□□□ □ WLAN□ □□□□.

-eth0 - VLAN10-10.1.10.0/24

eth01-VLAN □□-192. 168. 5. 0/24

eth2 - LAN20-10.1.20.0/24

□□ □ □□ Nutanix □□□□ □□□ □□□□ □□□□? (2□ □□)

- A. □□ vSwitch
- B. □□□□ □□ □□□
- C. IP □□ □□(IPAM)
- D. □□□□ LAN

Answer: A,D ([LEAVE A REPLY](#))

NEW QUESTION: 111

□□ □□ □□ □□ □□ □ □□□□ □□□□ □□ Zookeeper□□ □□ □□□ □□□□ □□□□
□?

- A. □□□ □□□
- B. □□□ □□□
- C. □□□□□
- D. □□ □□□

Answer: ([SHOW ANSWER](#))

NEW QUESTION: 112

□□□ □□□ □□□□ RF2 □□□□□ □□□ □□□□ □□□□ □□ □□ □□□ □□□□.
□ □□□□ □□ □□□?

- A. Prism Element□ □□□ □□□ □□□ □□ □□□ □□□□□.
- B. □□ □□□□□ □□ □□□□ □□□□□□□ VM□ □ □□ □□□□ □ □□□□.
- C. □□□□ □□□□□ □□ □□□ □□□ □□□□ □□□.
- D. □□□ □ □□ □□□□ □□□□ □□ □□ □□□□ □□□ □□□□□□□.

Answer: D ([LEAVE A REPLY](#))

NEW QUESTION: 113

□□□ □□□ □□□□ □□ □□□□□?

- A. 1 □□ 3-VM□□ bu □□□ □□
- B. □□□□□ PC□ □□□□□□□ □□□□ □
- C. 1,2 □□ 3-VM□□ □□□□ □□ □□
- D. □□ □ □□

Answer: A ([LEAVE A REPLY](#))

NEW QUESTION: 114

Which of the following is the correct order of steps to shut down a Nutanix AHV cluster? (Select all that apply.)

1. Shut down the CVMs

2. Shut down the nodes

Procedure

Step

Shut down CVMs

	▼
Step 1	
Step 2	
Step 3	
Step 4	

Shut down Nodes

	▼
Step 1	
Step 2	
Step 3	
Step 4	

Shut down Guest VMs

	▼
Step 1	
Step 2	
Step 3	
Step 4	

Stop the Cluster

	▼
Step 1	
Step 2	
Step 3	
Step 4	

Answer:

Procedure

Step

Shut down CVMs

	▼
Step 1	
Step 2	
Step 3	
Step 4	

Shut down Nodes

	▼
Step 1	
Step 2	
Step 3	
Step 4	

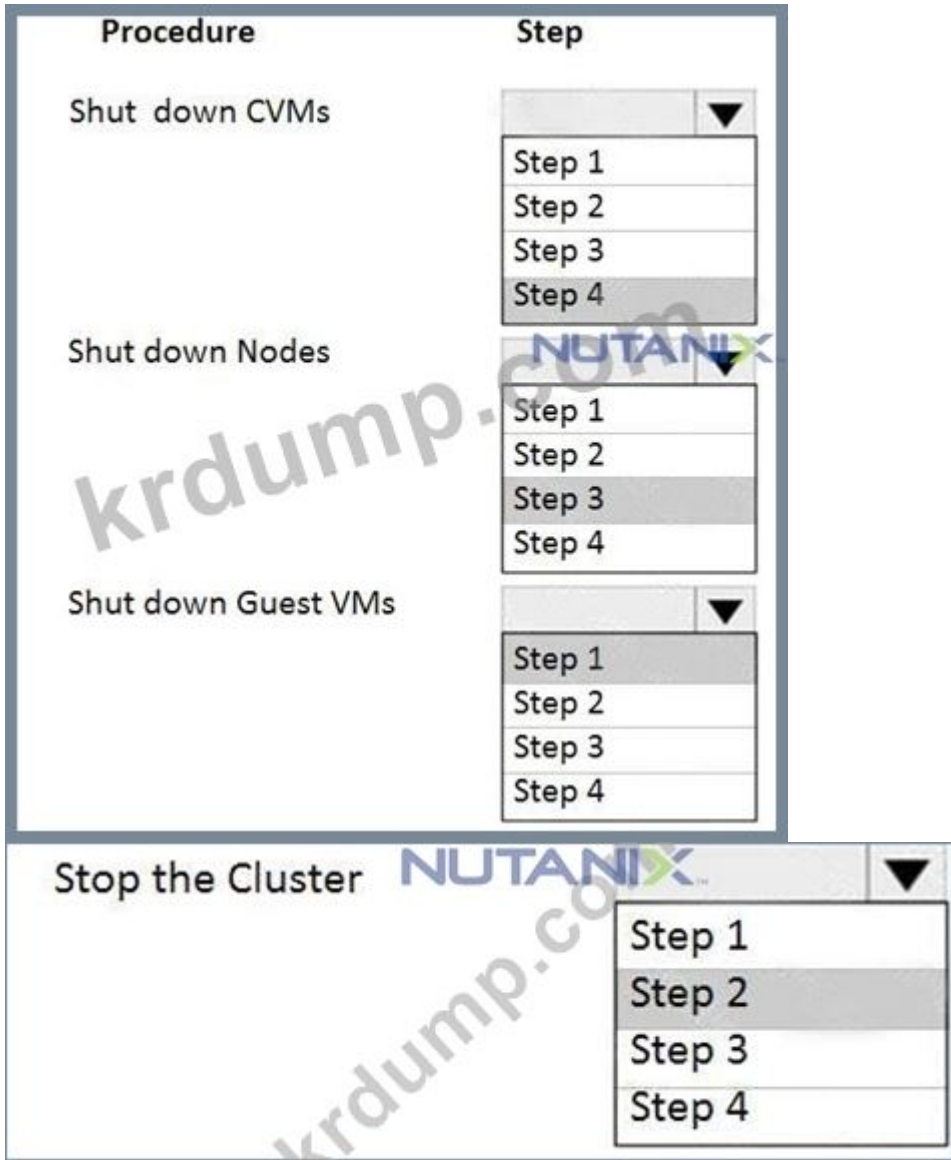


Shut down Guest VMs

	▼
Step 1	
Step 2	
Step 3	
Step 4	

Stop the Cluster

	▼
Step 1	
Step 2	
Step 3	
Step 4	



NEW QUESTION: 115

Which of the following is the correct order of steps to shut down a Nutanix cluster? (Select three)

nutanix shuts down CVMs first, then shuts down Nodes, then shuts down Guest VMs, then shuts down the Cluster?

- A. CVMs, Nodes, Guest VMs
- B. Nodes, Guest VMs, CVMs
- C. Guest VMs, CVMs, Nodes
- D. Nodes, CVMs, Guest VMs

Answer: ([SHOW ANSWER](#))

NEW QUESTION: 116

Which of the following is the correct order of steps to shut down a Nutanix cluster? (Select three)

- A. NTP
- B. SNMP
- C. DNS
- D. SMTP

Answer: D ([LEAVE A REPLY](#))

NEW QUESTION: 117

Which of the following is a supported protocol for Prism Central?

- A. SNMP
- B. SSH
- C. NetFlow
- D. SNMP

Answer: C ([LEAVE A REPLY](#))

[https://portal.nutanix.com/page/documents/details/?targetId=Prism_Central_Guide-](https://portal.nutanix.com/page/documents/details/?targetId=Prism_Central_Guide-Acr_v4_6:mul_alerts_management_pc_c.html)

[Acr_v4_6:mul_alerts_management_pc_c.html](https://portal.nutanix.com/page/documents/details/?targetId=Prism_Central_Guide-Acr_v4_6:mul_alerts_management_pc_c.html) Prism Central supports the following protocols for monitoring and alerting: NetFlow, SNMP, and Syslog. NetFlow is supported for monitoring network traffic. SNMP is supported for monitoring device health. Syslog is supported for monitoring system logs.

Prism Central supports the following protocols for monitoring and alerting: NetFlow, SNMP, and Syslog. NetFlow is supported for monitoring network traffic. SNMP is supported for monitoring device health. Syslog is supported for monitoring system logs. Prism Central also supports the following protocols for monitoring and alerting: NetFlow, SNMP, and Syslog. NetFlow is supported for monitoring network traffic. SNMP is supported for monitoring device health. Syslog is supported for monitoring system logs. (Nutanix Prism Central supports the following protocols for monitoring and alerting: NetFlow, SNMP, and Syslog.)

Prism Central supports the following protocols for monitoring and alerting:

NetFlow, SNMP, and Syslog.

NetFlow is supported for monitoring network traffic.

SNMP is supported for monitoring device health.

Syslog is supported for monitoring system logs.

Prism Central also supports the following protocols for monitoring and alerting:

NetFlow, SNMP, and Syslog.

NetFlow is supported for monitoring network traffic (24x7).

SNMP is supported for monitoring device health. Syslog is supported for monitoring system logs. Prism Central also supports the following protocols for monitoring and alerting:

Nutanix Prism Central supports the following protocols for monitoring and alerting:

NetFlow, SNMP, and Syslog. NetFlow is supported for monitoring network traffic. SNMP is supported for monitoring device health. Syslog is supported for monitoring system logs.

Prism Central also supports the following protocols for monitoring and alerting: NetFlow, SNMP, and Syslog. NetFlow is supported for monitoring network traffic (24x7).

SNMP is supported for monitoring device health. Syslog is supported for monitoring system logs. Prism Central also supports the following protocols for monitoring and alerting: NetFlow, SNMP, and Syslog. NetFlow is supported for monitoring network traffic. SNMP is supported for monitoring device health. Syslog is supported for monitoring system logs.

NEW QUESTION: 118

Nutanix Prism Central supports which of the following protocols for monitoring and alerting?

- A. NetFlow
- B. SNMP
- C. NetFlow
- D. NetFlow

Answer: (SHOW ANSWER)

NEW QUESTION: 119

VMware VMs are migrated to Nutanix VMs. How many VMs can be migrated to Nutanix VMs? (20 VMs)

AWR VMs are migrated to Nutanix VMs. How many VMs can be migrated to Nutanix VMs? (20 VMs)

- A. 15 VMs can be migrated to Nutanix VMs.
- B. 20 VMs can be migrated to Nutanix VMs.
- C. 25 VMs can be migrated to Nutanix VMs.
- D. 30 VMs can be migrated to Nutanix VMs.

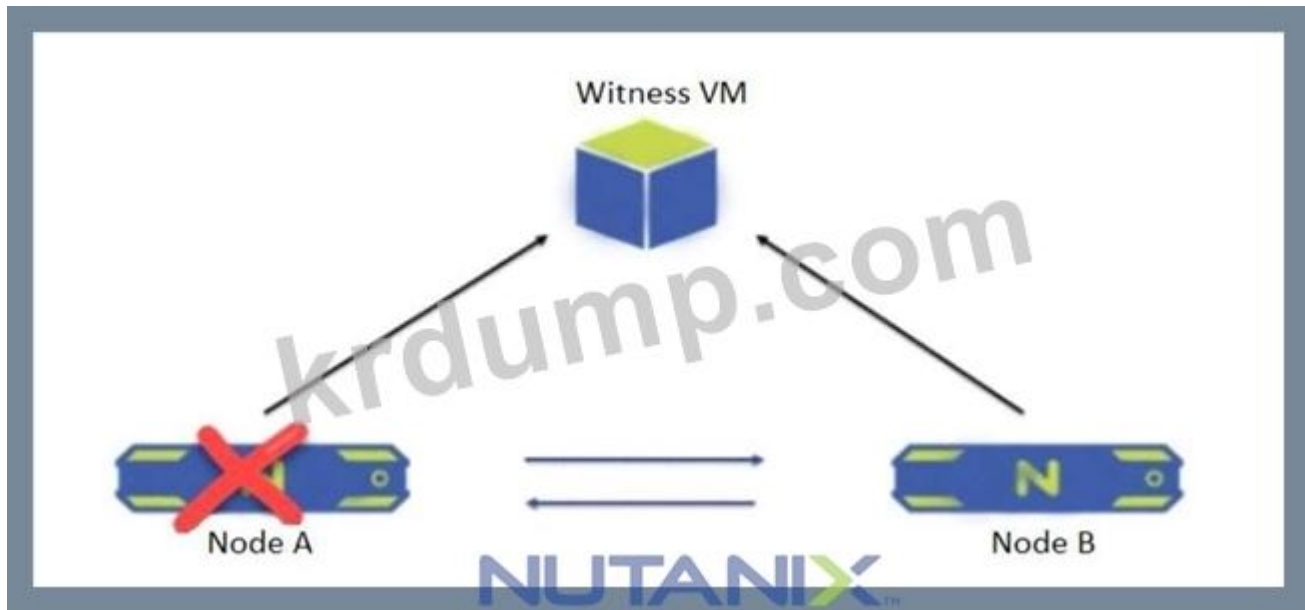
Answer: B,D (LEAVE A REPLY)

☐☐

<https://portal.nutanix.com/page/documents/details/?targetId=Web-Console-Guide-Prism-v55:wc-dr-management>

NEW QUESTION: 120

200 ROBO VMs are migrated to Nutanix VMs. How many VMs can be migrated to Nutanix VMs?



☐☐ A☐ ☐☐☐☐ ☐☐☐ ☐☐☐?

- A. ☐☐ B☐ ☐☐ ☐☐ ☐☐☐☐ ☐☐☐☐ ☐☐ ☐☐☐☐☐☐.
- B. ☐☐ B☐ ☐☐ VM☐ ☐☐☐☐ ☐☐☐☐ ☐☐☐☐☐☐☐☐☐.
- C. ☐☐☐☐☐☐ ☐☐☐☐☐☐☐☐☐☐☐☐☐☐☐☐☐☐.
- D. ☐☐☐☐☐☐☐☐☐☐☐☐☐☐☐☐☐☐☐☐☐☐.

Answer: B (LEAVE A REPLY)

NCP-5.15 ☐☐ ☐☐☐ ☐☐☐☐☐ ☐☐ DumpTop ☐☐ ☐☐☐☐ ☐☐☐ NCP-5.15 ☐☐!
DumpTop ☐ ☐☐ **NCP-5.15** ☐☐ ☐☐☐ ☐☐☐☐☐☐, DumpTop NCP-5.15 ☐☐ ☐☐☐ ☐☐
☐☐☐☐☐☐ ☐☐☐ ☐☐☐☐☐☐☐☐. ☐☐☐☐☐ ☐☐☐☐☐ ☐☐☐☐☐ ☐☐ DumpTop NCP-5.15 ☐
☐☐ ☐☐☐☐☐. <https://www.dumptop.com/Nutanix/NCP-5.15-dump.html> (279 Q&As Dumps,
30%OFF Special Discount: KrDump)