

Microsoft.AZ-801.v2023-06-03.q100

□□□□:	AZ-801
□□□□:	Configuring Windows Server Hybrid Advanced Services
□□□:	Microsoft
□□ □□ □□□:	100
□□:	v2023-06-03
# □□ □:	1046
# □□ □□□:	1000
https://www.krdump.com/Microsoft.AZ-801.v2023-06-03.q100.html	

NEW QUESTION: 1

□□□ □□□□□ □□ □□□ □□□□ □□□. □□□□ □□ □□ □□□ □□□□ □□□.
□□□ □□□□□□ □□□ □□ □□ Azure□□ □□□ □□□□ □□□? □□□□□ □□ □□□□ □□□ □□□ □□□□□□□.
□□: □ □□□ □□□ 1□□ □□□ □□□□.

On the domain controllers:

- Create a Data Collector Set in Performance Monitor.
- Modify the Performance Monitor Users group.
- Install the Azure Monitor agent.

In Azure:

- Create an Azure SQL database.
- Create a Storage Sync Service.
- Create an Azure Log Analytics workspace.
- Create an Azure Storage account.

Answer:

□□
□□□□ □□□ □□□ □□

On the domain controllers:

Create a Data Collector Set in Performance Monitor.
Modify the Performance Monitor Users group.
Install the Azure Monitor agent.

In Azure:

Create an Azure SQL database.
Create a Storage Sync Service.
Create an Azure Log Analytics workspace.
Create an Azure Storage account.

□□:

<https://docs.microsoft.com/en-us/azure/azure-monitor/agents/azure-monitor-agent-overview?tabs=PowerShellW>

NEW QUESTION: 2

□□□□□□ Active Directory □□□□ □□□□ AD DS(Active Directory □□□ □□□) □□□□ □□□□ □□□□. □□□□□ DC1 □ DC2□□ □ □□ □□□ □□□□□ □□□□. □□□ □□□□□ □□□ □□□ Windows Server □□□ □□□□ □□ 23:00□ □□□□ □.

1,000□□ □□□□ □□□ ParisUsers□□ □□ □□(OU)□ □□□□.

08:00□ □□□□ □□ □□□ □□ DC1□ □□□□□. □□ □□□ □□□□□ DC1□ □□□ □□□ □□□□□.

09:00□ □□ □□□ □□ ParisUsers□ □□ □ □□□□ □□□ □□□ □□□□□.

□□□ □□ □□□ □□ □□□ □□□□ □□□. □□□□ □□□ □□□ □□□□□ □□□.

□□ □ □□ □□□ □□□□ □□□□ □□□□? □□□□□ □□ □□□□ □□ □□□ □□ □□□□ □□□□ □□□ □□□ □□□□□ □.

Actions

Start DC1 normally.

Perform an authoritative restore on DC1.

Recover all the user objects in the Active Directory Recycle Bin.

Start DC1 by using the Last Known Good Configuration.

Start DC1 in Directory Services Restore Mode.

Perform a system state restore on DC1.

Answer Area

Answer:

Actions	Answer Area
Start DC1 normally.	Start DC1 in Directory Services Restore Mode.
Perform an authoritative restore on DC1.	Perform a system state restore on DC1.
Recover all the user objects in the Active Directory Recycle Bin.	Perform an authoritative restore on DC1.
Start DC1 by using the Last Known Good Configuration.	
Start DC1 in Directory Services Restore Mode.	
Perform a system state restore on DC1.	

Contoso, Ltd

Contoso

Contoso

Contoso Azure AD (Azure Active Directory) contoso.com AD DS (Active Directory) AD DS

Name	Operating system	Operation master role
DC1	Windows Server 2012 R2	RID master, schema master
DC2	Windows Server 2016	PDC emulator, infrastructure master
DC3	Windows Server 2016	Domain naming master

Contoso Azure

Contoso Windows Server 2012 R2. Contoso Windows Server 2012. Contoso Active Directory

contoso.com

Name	Organizational unit (OU)/Container	Member of
User1	OU1	Group2, Group4
User2	Users	Group2
User3	OU1	Group3, Group4
Admin1	OU1	Domain Admins

contoso.com GPO

Name	Minimum password length	Linked to
Default Domain Policy	8	contoso.com
GPO1	10	OU1

contoso.com PSO

Name	Precedence	Minimum password length	Directly applies to
PSO1	10	9	Group2
PSO2	20	11	Group4

Contoso

contoso.com Windows Server 2022

Name	Description
Server1	Contains a share named Share1
Server2	None
Server3	None
Server4	Has Remote Desktop enabled

Contoso Windows

NEW QUESTION: 4

Active Directory (AD) DS (Active Directory) is installed on DC1 and DC2. At 23:00, a power outage occurs on DC1. DC1 is not available for 1,000 hours. ParisUsers (OU) is located on DC1. At 08:00, DC1 is powered on. At 09:00, ParisUsers is not available. What should you do to restore ParisUsers? (Select two.)

1,000 hours of ParisUsers (OU) is lost.

At 08:00, DC1 is powered on. At 09:00, ParisUsers is not available.

At 09:00, ParisUsers is not available.

What should you do to restore ParisUsers? (Select two.)

At 08:00, DC1 is powered on. At 09:00, ParisUsers is not available. What should you do to restore ParisUsers? (Select two.)

Actions

- Start DC1 normally.
- Perform an authoritative restore on DC1.
- Recover all the user objects in the Active Directory Recycle Bin.
- Start DC1 by using the Last Known Good Configuration.
- Start DC1 in Directory Services Restore Mode.
- Perform a system state restore on DC1.

ANSWER AREA



Kidump.com

Answer:

- Start DC1 in Directory Services Restore Mode.
- Perform a system state restore on DC1.

- Start DC1 in Directory Services Restore Mode.
- Perform a system state restore on DC1.
- Perform an authoritative restore on DC1.

NEW QUESTION: 5

DHCP is installed on DHCP1. DHCP1 is not available for 100 hours. DHCP2 is available. What should you do to restore DHCP1? (Select two.)

DHCP1 is not available for 100 hours. DHCP2 is available. What should you do to restore DHCP1? (Select two.)

At 08:00, DHCP1 is powered on. At 09:00, DHCP1 is not available. What should you do to restore DHCP1? (Select two.)

At 08:00, DHCP1 is powered on. At 09:00, DHCP1 is not available. What should you do to restore DHCP1? (Select two.)


Cmdlets

- Add-DhcpServerInDC
- Add-DhcpServerv4Scope
- Export-DhcpServer
- Import-DhcpServer
- Remove-DhcpServerInDC
- Remove-DhcpServerv4Scope

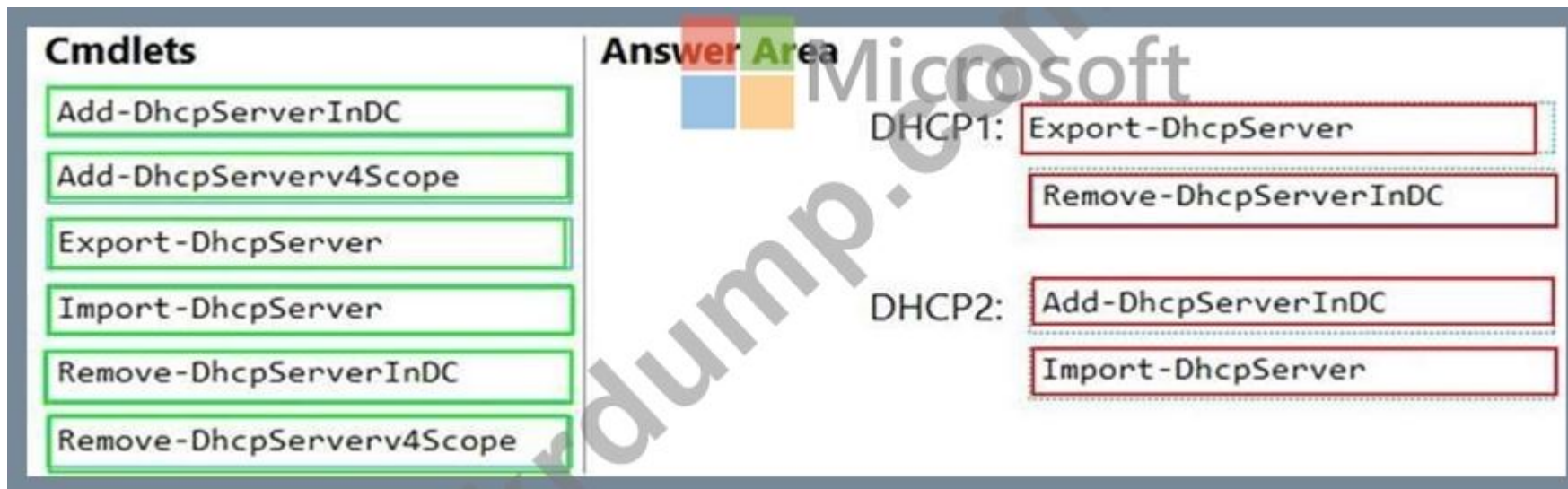
Answer Area

DHCP1:

DHCP2:



Answer:



Cmdlets

- Add-DhcpServerInDC
- Add-DhcpServerv4Scope
- Export-DhcpServer
- Import-DhcpServer
- Remove-DhcpServerInDC
- Remove-DhcpServerv4Scope

Answer Area

DHCP1:

DHCP2:

□□:

<https://theitbros.com/how-to-migrate-dhcp-to-windows-server-2016/>

NEW QUESTION: 6

□□ □□□ □□□ Cluster1□□□ Hyper-V □□ □□ □□□□□ □□□□. Cluster1□□ Hyper-V □□ □□□ □□□ □ □□ □□□ □□ □□. Cluster1□ 10□□ □□□□ □□ □□□ □□□□□□.

□□ □□ □□□□ Cluster2□□ □□□□□ □□□□. Cluster2□□ Hyper-V □□ □□□ □□□ □ □□ □□□ □□□□.

Hyper-V □□□□ □□□□ Cluster1□□ Cluster2□ □□ □□□ □□□ □□□□□.

□□□ □□ □□□? □□□□□ □□ □□□□ □□□ □□□ □□□□□□.

□□: □ □□□ □□□ 1□□ □□□ □□□□.

Cluster role to create on Cluster2:

- Distributed Transaction Coordinator (DTC)
- Generic Script
- Hyper-V Replica Broker
- Virtual machine

Replication target name to specify:

- Cluster2
- The name of a node on Cluster2
- The name of each virtual machine
- The name of the Hyper-V Replica Broker

Answer:

Cluster role to create on Cluster2:

- Distributed Transaction Coordinator (DTC)
- Generic Script
- Hyper-V Replica Broker
- Virtual machine

Replication target name to specify:

- Cluster2
- The name of a node on Cluster2
- The name of each virtual machine
- The name of the Hyper-V Replica Broker

□□:

<https://docs.microsoft.com/en-us/virtualization/community/team-blog/2012/20120327-why-is-the-hyper-v-replica-broker-required>

NEW QUESTION: 7

□□□□□□ AD DS(Active Directory □□□ □□□) □□□□ □□□□ □□□□. □□□□□ Server1□□□□ □□ □□□ □□□□. □□ □□□□ GPO1□□□□ GPO(□□ □□ □□)□ □□□□ □□□□□ □□□□□.

Server2□□ □ □□□ □□□□□.

Server1□ □□□□ □□□. □□□□ □□ □□ □□ □□□□ □□□.

□□□ □□□□□□ □□□□ □□□□ □□ □□□□ Server2□ □□□□□□□□□.

□□□□ Server2□□ □□□□ □□□□□ □□□□□.

□□□□ □□ □□ □□□ □□□□□□.

□□ □ □□ □□□ □□□□ □□□□ □□□? □□□□□ □□ □□□□ □□ □□□ □□ □□□□ □□□□ □□□ □□□ □□□□□

□.

Actions	Answer Area
Decommission Server1.	
Import the printers on Server2.	
Deploy Windows Server Hybrid Cloud Print.	
Export the printers on Server1.	
Update the service principal name (SPN) of each printer.	
Modify GPO1.	

Answer:

Actions	Answer Area
Decommission Server1.	Export the printers on Server1.
Import the printers on Server2.	Import the printers on Server2.
Deploy Windows Server Hybrid Cloud Print.	Modify GPO1.
Export the printers on Server1.	Decommission Server1.
Update the service principal name (SPN) of each printer.	
Modify GPO1.	

□□:

<https://docs.microsoft.com/en-us/archive/blogs/canitpro/step-by-step-migrating-print-servers-from-windows-server-2008-to-windows-server-2012>

NEW QUESTION: 8

□□ □□□ □□ GPO(□□ □□ □□)□ GPO □□□□ □□□□□. (GPO □□ □□□□□.)

Group Policy Management

File Action View Window Help

Group Policy Management

- Forest: Fabrikam.com
 - Domains
 - Fabrikam.com
 - Default Domain Policy
 - Domain Controllers
 - ServiceAccounts
 - Group Policy Objects
 - WMI Filters
 - Starter GPOs
 - Sites
 - Group Policy Modeling
 - Group Policy Results

Default Domain Policy

Scope Details Settings Delegation

Default Domain Policy
Data collected on: 10/18/2021 9:06:02 PM [show all](#)

General [hide](#)

Details [show](#)

Links [show](#)

Security Filtering [show](#)

Delegation [show](#)

Computer Configuration (Enabled) [hide](#)

Policies [hide](#)

Windows Settings [hide](#)

Security Settings [hide](#)

Account Policies/Password Policy [hide](#)

Policy	Setting
Enforce password history	24 passwords remembered
Maximum password age	42 days
Minimum password age	1 days
Minimum password length	7 characters
Password must meet complexity requirements	Enabled
Store passwords using reversible encryption	Disabled

Account Policies/Account Lockout Policy [show](#)

Account Policies/Kerberos Policy [show](#)

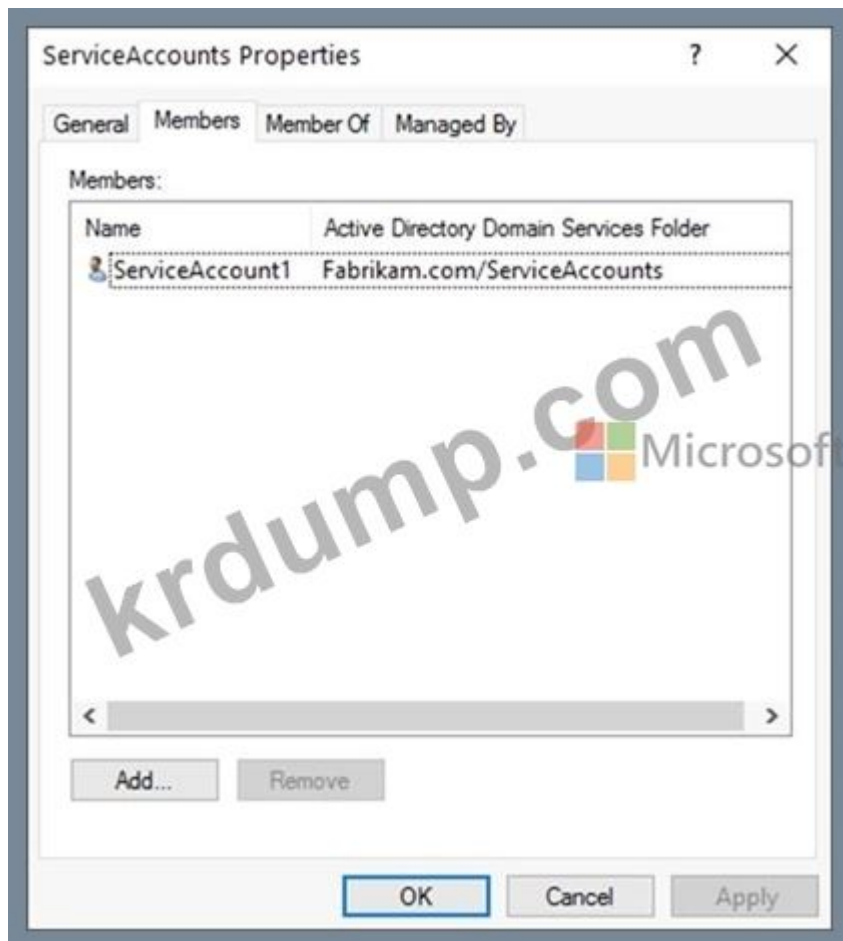
Local Policies/Security Options [show](#)

Public Key Policies/Encrypting File System [show](#)

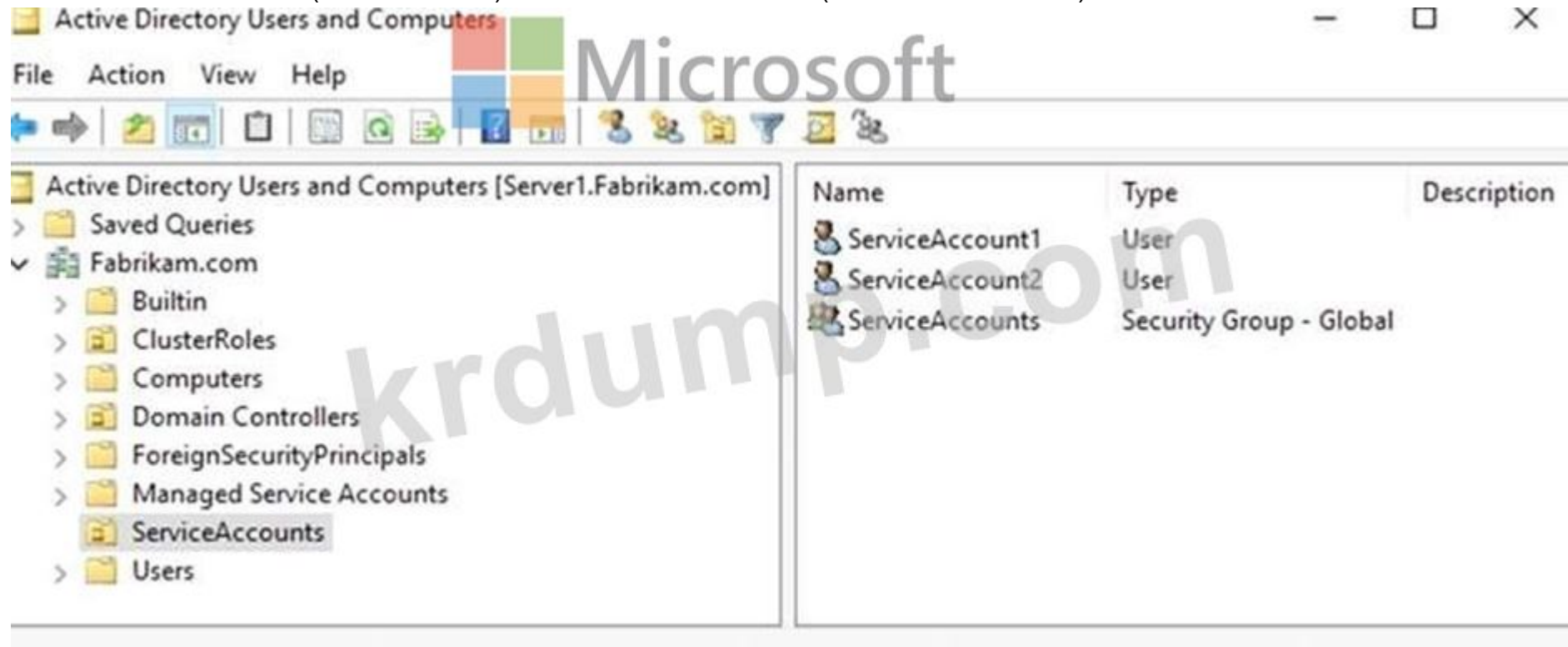
User Configuration (Enabled) [hide](#)

No settings defined.

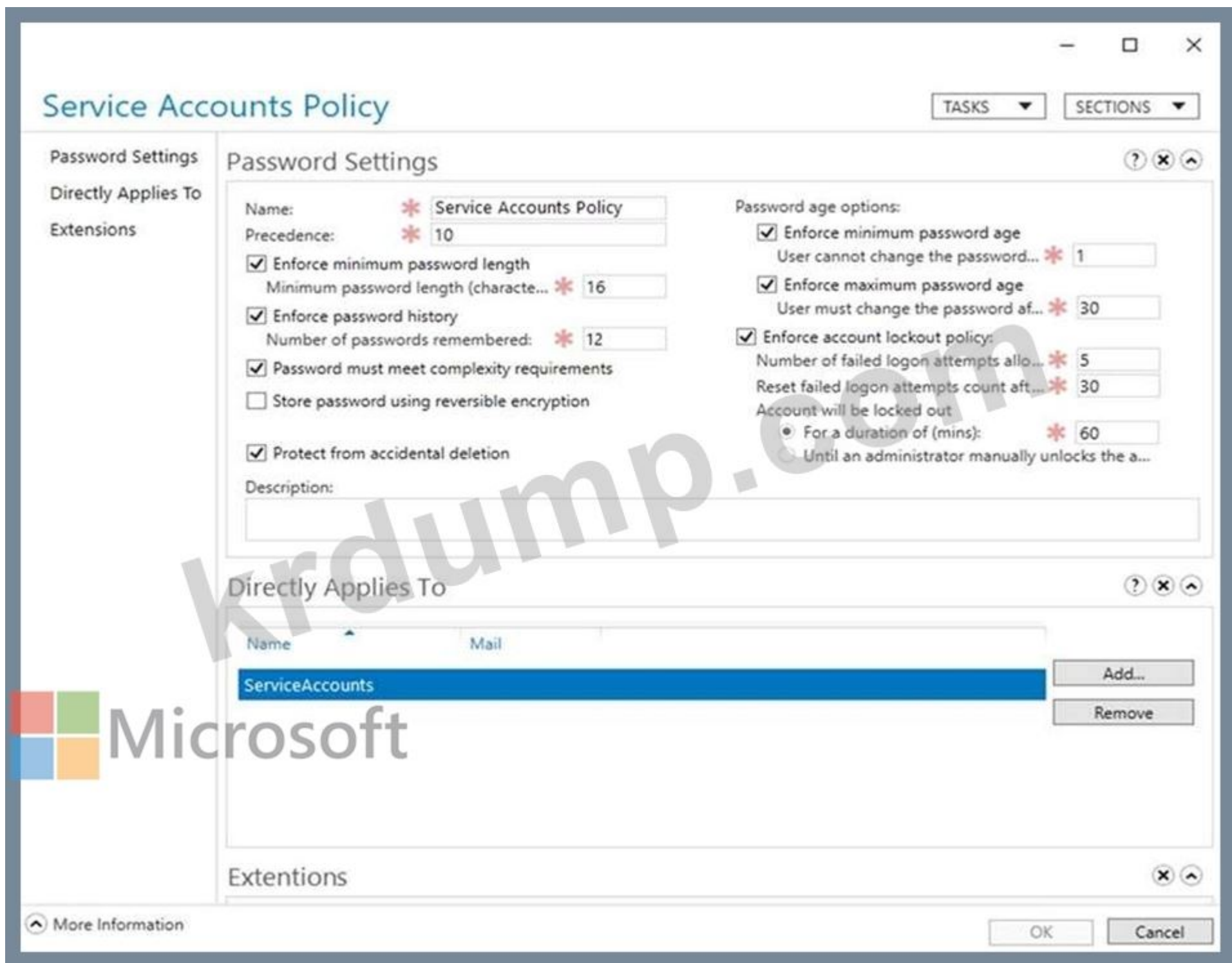
Service Accounts □□ □□□ □□□□ □□ □□□ □□□□□. (□□ □□ □□□□□.)



ServiceAccounts OU() OU . (OU .)



PSO () PSO() . (PSO .)



00 0 000 00 000 000 00 0000000. 000 000 0000 000000.
00: 0 000 000 100 000 00000.

Statements	Yes	No
The password of ServiceAccount1 must be at least 16 characters long.	<input type="radio"/>	<input type="radio"/>
The password of ServiceAccount2 must be at least 16 characters long.	<input type="radio"/>	<input type="radio"/>
Accounts that have the Service Accounts Policy applied can change their password to P@\$\$w0rd1.	<input type="radio"/>	<input type="radio"/>

Answer:

Statements	Yes	No
The password of ServiceAccount1 must be at least 16 characters long.	<input checked="" type="radio"/>	<input type="radio"/>
The password of ServiceAccount2 must be at least 16 characters long.	<input type="radio"/>	<input checked="" type="radio"/>
Accounts that have the Service Accounts Policy applied can change their password to P@\$\$w0rd1.	<input checked="" type="radio"/>	<input type="radio"/>

□□:

https://docs.microsoft.com/en-us/windows-server/identity/ad-ds/get-started/adac/introduction-to-active-directory-administrative-center-enhancements--level-100-# fine_grained_pswd_policy_mgmt

NEW QUESTION: 9

□□ □□ □□ Windows Server□ □□□□ □ □□ □□□ □□□□.

Name	Location	Domain/workgroup
Server1	On-premises	Domain
Server2	Azure virtual machine	Workgroup

Server1□□ Server2□ □□ E□ □□□ □□□□ □□□. □□□□ □□ □□ □□□ □□□□ □□□.

□□ □□ □□□ □□□□□□ □□□□□□.

□□ □□□ □□□□□□.

□□□ □□□□ □□□?

A. Azure □□ □□□

B. □□□□ □□□□□□ □□□

C. □□□ □□□

D. Azure □□

Answer: B (LEAVE A REPLY)

NEW QUESTION: 10

□-□□□□ □□□□□□□ □□□ □□□□ □□ europe.fabrikam.com □□□□□□□ □□□□ □□□□. PES(□□ □□□□ □□) □□□□ □ □□□ □□□□ □□□ □□ □□□□ □□□□ □□□□ □□□ □□□ □□□□□□.

□□: □ □□□ □□□ 1□□ □□□ □□□□.

Answer Area

Install the PES service on:

- aadc1.corp.fabrikam.com
- admtcomputer.fabrikam.com
- dc1.corp.fabrikam.com
- dc2.europe.fabrikam.com

Generate the encryption key on:

- aadc1.corp.fabrikam.com
- admtcomputer.fabrikam.com
- dc1.corp.fabrikam.com
- dc2.europe.fabrikam.com

Answer:

□□

Answer Area

Install the PES service on:

Generate the encryption key on:

NEW QUESTION: 11

□□□ □□□□□ □□ □□□ □□□□ □□□. □□□□ □□ □□ □□□ □□□□ □□□.

□□□ □□□□□□ □□□ □□ □□ Azure□□ □□□ □□□□ □□□? □□□□□ □□ □□□□ □□□ □□□ □□□□□□□.

□□: □ □□□ □□□ 1□□ □□□ □□□□.

On the domain controllers:

- Create a Data Collector Set in Performance Monitor.
- Modify the Performance Monitor Users group.
- Install the Azure Monitor agent.

In Azure:

- Create an Azure SQL database.
- Create a Storage Sync Service.
- Create an Azure Log Analytics workspace.
- Create an Azure Storage account.

Answer:

On the domain controllers:

- Create a Data Collector Set in Performance Monitor.
- Modify the Performance Monitor Users group.
- Install the Azure Monitor agent.

In Azure:

- Create an Azure SQL database.
- Create a Storage Sync Service.
- Create an Azure Log Analytics workspace.
- Create an Azure Storage account.

□□

□□□□ □□□ □□□ □□

On the domain controllers:

- Create a Data Collector Set in Performance Monitor.
- Modify the Performance Monitor Users group.
- Install the Azure Monitor agent.

In Azure:

- Create an Azure SQL database.
- Create a Storage Sync Service.
- Create an Azure Log Analytics workspace.
- Create an Azure Storage account.

□□:

<https://docs.microsoft.com/en-us/azure/azure-monitor/agents/azure-monitor-agent-overview?tabs=PowerShellW>

NEW QUESTION: 12

Windows Server □ □□□□ Server1 □□□ □□□ □□□□.

Server1 □□ □□ □□□□ □□□□ CollectorSet1 □□□ □□□ □□□ □□□□.

□□ □□ □□□ □□□□□ CollectorSet1 □ □□□□ □□□.

□□ □□ □□□ □□□ □ □□□ □□□□ □□□.

□□ □□□ □□□ □□□ 500MB □□□□ □□ □□□ □□□ □□□□ □□□.

□ □□ □□□ □□ □□□ □□□□ □□□? □□□□□ □□ □□□□ □□□ □□□ □□□□□□.

□□: □ □□□ □□□ 100 □□□ □□□□.

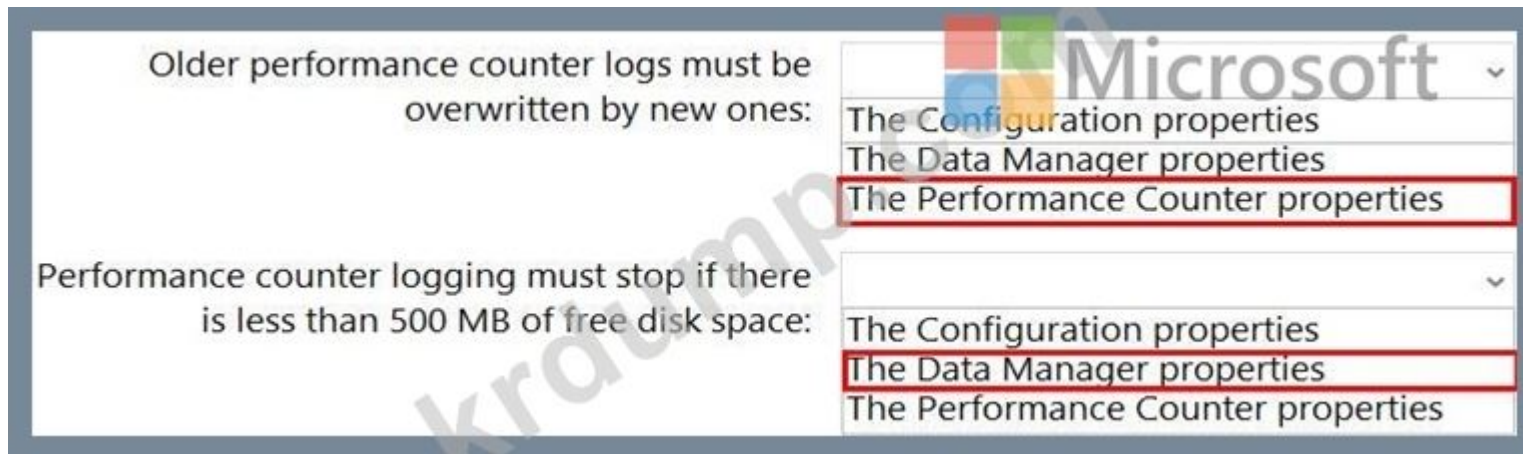
Older performance counter logs must be overwritten by new ones:

- The Configuration properties
- The Data Manager properties
- The Performance Counter properties

Performance counter logging must stop if there is less than 500 MB of free disk space:

- The Configuration properties
- The Data Manager properties
- The Performance Counter properties

Answer:



NEW QUESTION: 13

AD DS (Active Directory) is installed on Windows Server 2012 R2 Server1 and Server2.

Server2 is a member server of the Server1 domain.

Windows Defender is installed on Server2. What is the status of Windows Defender on Server2?

Options: Disabled Enabled

- A. COM+ (DCOM-In)
- B.
- C. WMI-In (Windows Management Instrumentation)
- D. COM+ (DCOM-In)
- E. Windows Management Instrumentation (DCOM-In)

Answer: (SHOW ANSWER)

Options:

<https://docs.microsoft.com/en-us/windows-server/administration/server-manager/configure-remote-management-in-server-manager>

NEW QUESTION: 14

Cluster1 is a Hyper-V cluster. Cluster1 Hyper-V VMs are running on Cluster1. Cluster1 has 10 VMs.

Cluster2 is a Hyper-V cluster. Cluster2 Hyper-V VMs are running on Cluster2.

Hyper-V VMs are running on Cluster1 and Cluster2. What is the status of Hyper-V VMs on Cluster1 and Cluster2?

□□□ □□ □□□? □□□□□ □□ □□□□ □□□ □□□ □□□□□□.

□□: □ □□□ □□□ 1□□ □□□ □□□□.

Cluster role to create on Cluster2:

▼
Distributed Transaction Coordinator (DTC)
Generic Script
Hyper-V Replica Broker
Virtual machine

Replication target name to specify:

▼
Cluster2
The name of a node on Cluster2
The name of each virtual machine
The name of the Hyper-V Replica Broker

Answer:

Cluster role to create on Cluster2:

▼
Distributed Transaction Coordinator (DTC)
Generic Script
Hyper-V Replica Broker
Virtual machine

Replication target name to specify:

▼
Cluster2
The name of a node on Cluster2
The name of each virtual machine
The name of the Hyper-V Replica Broker

□□:

<https://docs.microsoft.com/en-us/virtualization/community/team-blog/2012/20120327-why-is-the-hyper-v-replica-broker-required>

NEW QUESTION: 15

□□□□□□ contoso.com □□□ AD DS (Active Directory □□□ □□□) □□□□ □□□□ □□□□. □□□□□ DC1, DC2 □ DC3 □□□□ □ □□ □□□ □□□□□ □□□□.

Microsoft Defender □□ ID □□□□□□ □□□□ □□□□□.

ID□ □□ □□ □□□ □□□□□ Defender□ □□□□□ □□□.

□□□ □□□□□ □□□ □□□□ □□□?

A. AzureConnectedMachineAgent,wsl

B. MARAgentInstaller.exe

C. Azure ATP □□ □□,exe

D. MASetup-AMD64.exe

Answer: (SHOW ANSWER)

□□ 2, Fabrikam Inc

□□ □□

□□□ □□ □□□□□. □□ □□□ □□□ □□□ □□□□ □□□□. □ □□□ □□□□ □ □□□ □□ □□ □□□ □□□ □ □□□□. □□□ □□ □□ □ □□□ □□□ □□ □□□ □□□ □ □□□ □□□ □□ □□ □□□.

□□ □□□ □□□ □□□ □□□□ □□ □□□ □□□ □□□ □□□□ □□□. □□ □□□□ □□ □□□ □□□ □□□□□ □□ □□ □□□ □□□□ □□□ □ □□ □□□□ □□□ □ □□□□. □ □□□ □ □□ □□□ □□ □□□ □□□□□□.

□ □□ □□□ □□□ □□ □□□ □□□□□. □ □□□□□ □□□ □□□□ □□□ □□ □□□□ □□□□ □□ □□□ □ □□□□. □ □□□ □□□ □□□ □ □□□□.

□□ □□□ □□□□□

□ □□ □□□ □ □□ □□□ □□□□□ □□□ □□□□□□. □□□ □□□ □□ □□ □□ □□ □□□ □□□□ □□ □□□ □□□ □ □□□□□. □ □□□ □□□□ □□□□ □□ □□, □□ □□ □ □□ □□□ □□ □□□ □□□□□. □□ □□□ □□ □□ □□ □□ □□□□ □□□ □□ □□ □□□□ □□□ □□ □□ □□□□ □□□ □□□□□.

□□

Fabrikam, Inc. □ □□□□ □□□ □□ □□□ □□□ □□ □□ □□ □□□□□.

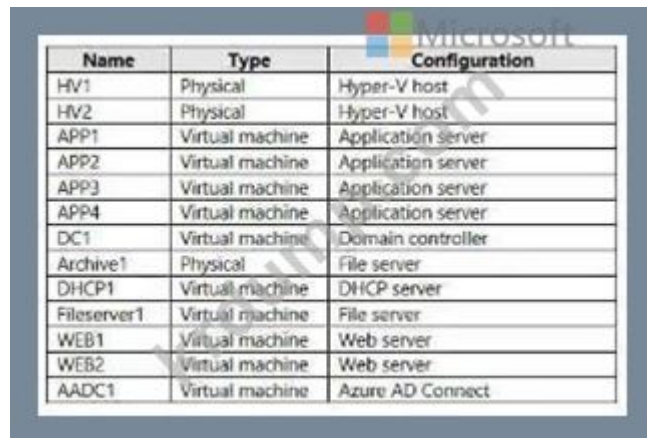
□□ □□

ID □□□

Fabrikam □□ Azure AD (Azure Active Directory) □□□□ □□□□□ AD DS (Active Directory Domain Services) □□□□□ □□□□. AD DS □□□□□□ corp.fabrikam.com □ europe.fabrikam.com □□□ □ □□ □□□□ □□□□.

□□□ □□□ □□□□□ □□

□□□ □□□□□ □□ □□ □□ Windows Server 2016 □ □□□□ □□□□□ □□□ □□□□.



Name	Type	Configuration
HV1	Physical	Hyper-V host
HV2	Physical	Hyper-V host
APP1	Virtual machine	Application server
APP2	Virtual machine	Application server
APP3	Virtual machine	Application server
APP4	Virtual machine	Application server
DC1	Virtual machine	Domain controller
Archive1	Physical	File server
DHCP1	Virtual machine	DHCP server
Fileserver1	Virtual machine	File server
WEB1	Virtual machine	Web server
WEB2	Virtual machine	Web server
AADC1	Virtual machine	Azure AD Connect

□□□ □□□□ □□ □□□ corp.fabrikam.com □□□□ □□□□.

□□□ □□□□ □□ □□ □□□ HV1 □ HV2□□ □□□□□□. HV1 □ HV2□ Cluster1□□□ □□ □□ □□□□□ □□□□□.

WEB1□ WEB2□ □□□ □□ □□□(IIS) □□□□□ □□□□□. □□□ □□□□ https://www.fabrikam.com □ URL□ □□□□ □ □□□ □ □□□□□.

□□□ □□□□ □□ □□□□ \\Fileserver1\Data □ UNC □□□ □□□□ □□ □□□□□ □□□□□.

□□ □□□□□ □□

□□□ □□□□□ Windows Server 2016 □ □□□□ europe.fabrikam.com □□□□ □□□ □□□□□ dc2.europe.fabrikam.com □□□ □ □□ □□□ □□□□.

□□□□ □□□

□□□□ □□ □□□□ □□□□□□ □□ □□□ □□□ □□□□. □□□□ □□ □□□□ VPN □□□ □□□□ □□□□□.

□□□ □□□□ □□□□□ □□□□ DHCP1□□ IP □□□ □□□□□.

□□ □□

Fabrikam□ □□□ □□ □□ □□□□□□.

* □□ □□□ NTLMv1, SMB1 □ □□□□ □□ LDAP□ □□ □□□□ □□ □□□□□ □□□□ AD DS □□□□ □□□□□.

* □□□ Windows Defender □□□□ □□□□□ □□□□. □□ □□□□ □□□ □□□ □□□ □□□ □□□□□.

□□ □□

□□ □□ □□

Fabrikam□ □□□ □□ □□ □□ □□□□□□.

* □□ □□□□ Windows Defender □□□ □□□ □□□□ □□□□ □□□.

* BitLocker □□□□ □□□(BitLocker)□ □□□□ □□□ □□ □□□ □□□□□ □□□□□□.

* □□□ □□ □□□□□ □□□□□ □□□ □□□□□ □□□ □ □□□ □□□□□□.

* Microsoft Sentinel□ □□ □□□□□ □□□□ □□□□ □□ □□□□□ □□□□ □□ □□□□□ □□ □□ □□□ □□□□□.

□□□□□ □□□□□□ □□

Fabrikam□ □□ □□ □□□ □□□□□□□ □□□□ □□□ □□ □□□□□□ □□ □□□ □□□□□.

* □□□ □□□□ □□ APP1 □ APP2 □□ □□□ Windows Server 2022□ □□□ Cluster2□□ □□□ Hyper-V □□ □□ □□□□□ □ □□□□.

* Cluster2□□ HV3 □ HV4□□ □ □□ □ □□□ □□□□□.

* □□ □□ □□ □□□ CSV(□□□□□ □□ □□)□ □□□□□.

* Archive1□ Windows Server 2022□ □□□ Cluster3□□□□ □ □□ □□ □□□□□ □□□□□□□□□□.

* Cluster3□□ Node1 □ Node2□□ □ □□ □□□ □□□ □□□□□.

* Cluster3□ □□ □□□ □□-□□ □□□□ □□ □□ □□□□ □□□ □□□.

* □□ □□□, □□ □ □□□□□ □□□□□ europe.fabrikam.com□□ corp.fabrikam.com□□ □□□□□□□□□□.

* □□□□□□□ ADMT(Active Directory Migration Tool)□ □□□□ □□□□□.

* ADMTcomputer□□ □□□□□ ADMT □□□□□□□ □□□ □□□□□ □□ corp.fabrikam.com □□□□ □□□□□.

* □□□ □□□ □□ □□□□□ □□□□□.

* Fileserver1□□ Windows Server□ □□□□ Fileserver2□□ □ □□□ □□□ □□ □□□□□□□

2022. □□□□□□ □ □□ UNC □□□ □□□□ □□□ □□□ □□□□ □ □□□ □□□.

Azure □□□□□□ □□

Fabrikam□ □□ □□□□□ Azure□ □□□□□□□□ □□□□ □□□ □□ □□□□□□ □□ □□□ □□□□□.

* Sub1□□□ Azure □□□ □□□□.

* Vnet1□□□ Azure □□ □□□□□ □□□□.

* ExpressRoute□ □□□□ □□ □ □□□ □□□□ Vnet1□ □□□□□.

* □□□ Microsoft Defender□ □□ □□ □□□ □□□□□ □□□□□.

* APP3 □ APP4□ Azure□ □□□□□□□□□.

* www.fabrikam.com □ □□□□ WebApp1□□□ Azure App Service □□□□ □□□□□□□□□.

* WEB1 □ WEB2□ □□□□□□.

DHCP □□□□□□ □□

Fabrikam□ DHCP1□ DHCP2□□ □ □□□ □□□ □□□□ □□□ □□ □□□□□□ □□ □□□ □□□□□.

* DHCP2□ DHCP1□□ □□ □□ □□□ □□ □□□ IP □□□ □□□□□ □□□□□□.

* DHCP2□□ □□□□ □□□□□ DHCP1□ □□□□□□ □□□□ □□□□ □□□□ □□□.

* □□ □□ □ □□□ □□□□□□□□□□ □□□□□.

Group Policy Management

File Action View Window Help

Group Policy Management

- Forest: Fabrikam.com
 - Domains
 - Fabrikam.com
 - Default Domain Policy
 - Domain Controllers
 - ServiceAccounts
 - Group Policy Objects
 - WMI Filters
 - Starter GPOs
 - Sites
 - Group Policy Modeling
 - Group Policy Results

Default Domain Policy

Scope Details Settings Delegation

Default Domain Policy
Data collected on: 10/18/2021 9:06:02 PM [show all](#)

General [hide](#)

Details [show](#)

Links [show](#)

Security Filtering [show](#)

Delegation [show](#)

Computer Configuration (Enabled) [hide](#)

Policies [hide](#)

Windows Settings [hide](#)

Security Settings [hide](#)

Account Policies/Password Policy [hide](#)

Policy	Setting
Enforce password history	24 passwords remembered
Maximum password age	42 days
Minimum password age	1 days
Minimum password length	7 characters
Password must meet complexity requirements	Enabled
Store passwords using reversible encryption	Disabled

Account Policies/Account Lockout Policy [show](#)

Account Policies/Kerberos Policy [show](#)

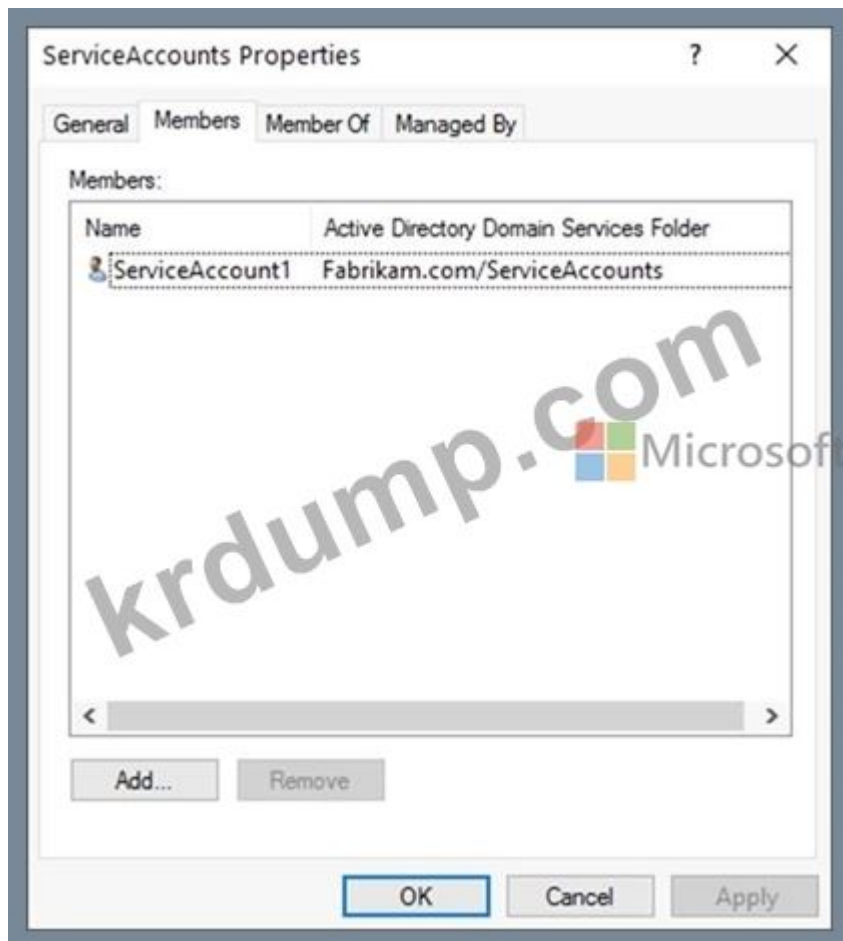
Local Policies/Security Options [show](#)

Public Key Policies/Encrypting File System [show](#)

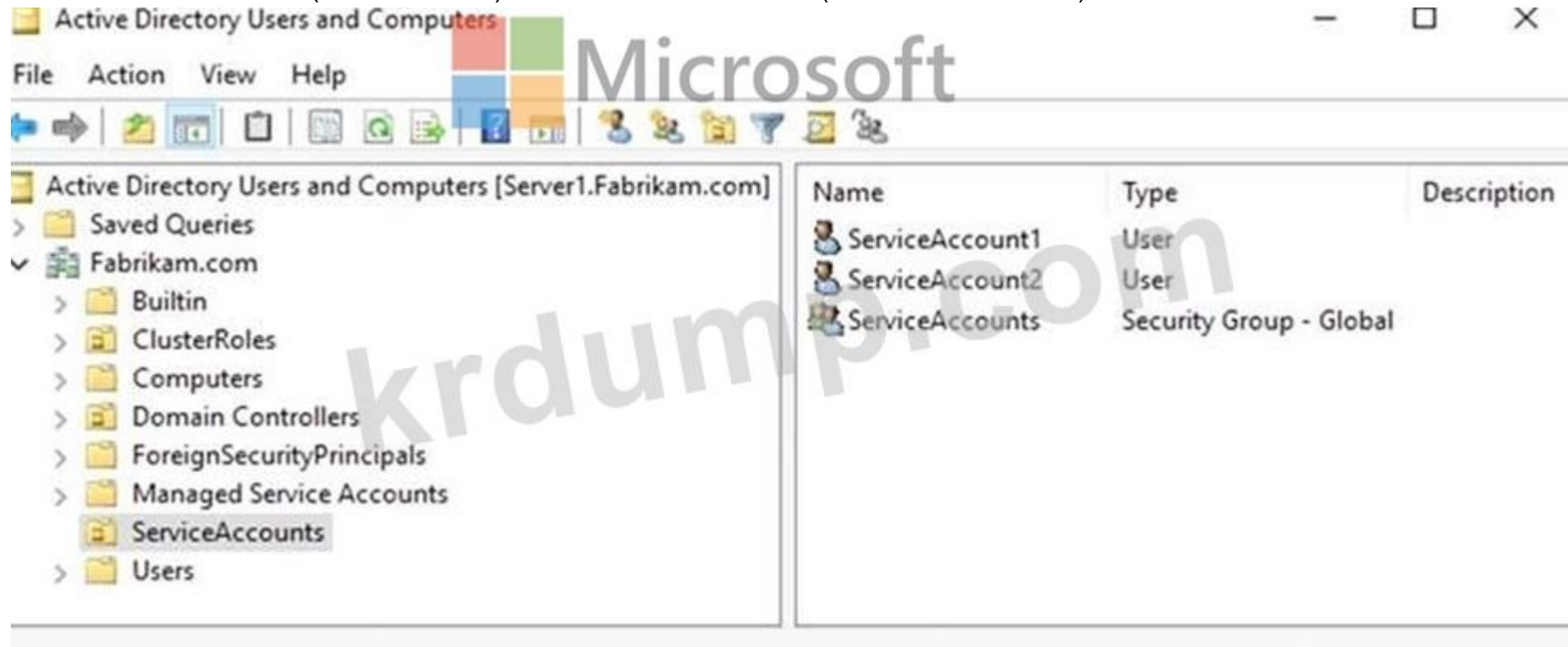
User Configuration (Enabled) [hide](#)

No settings defined.

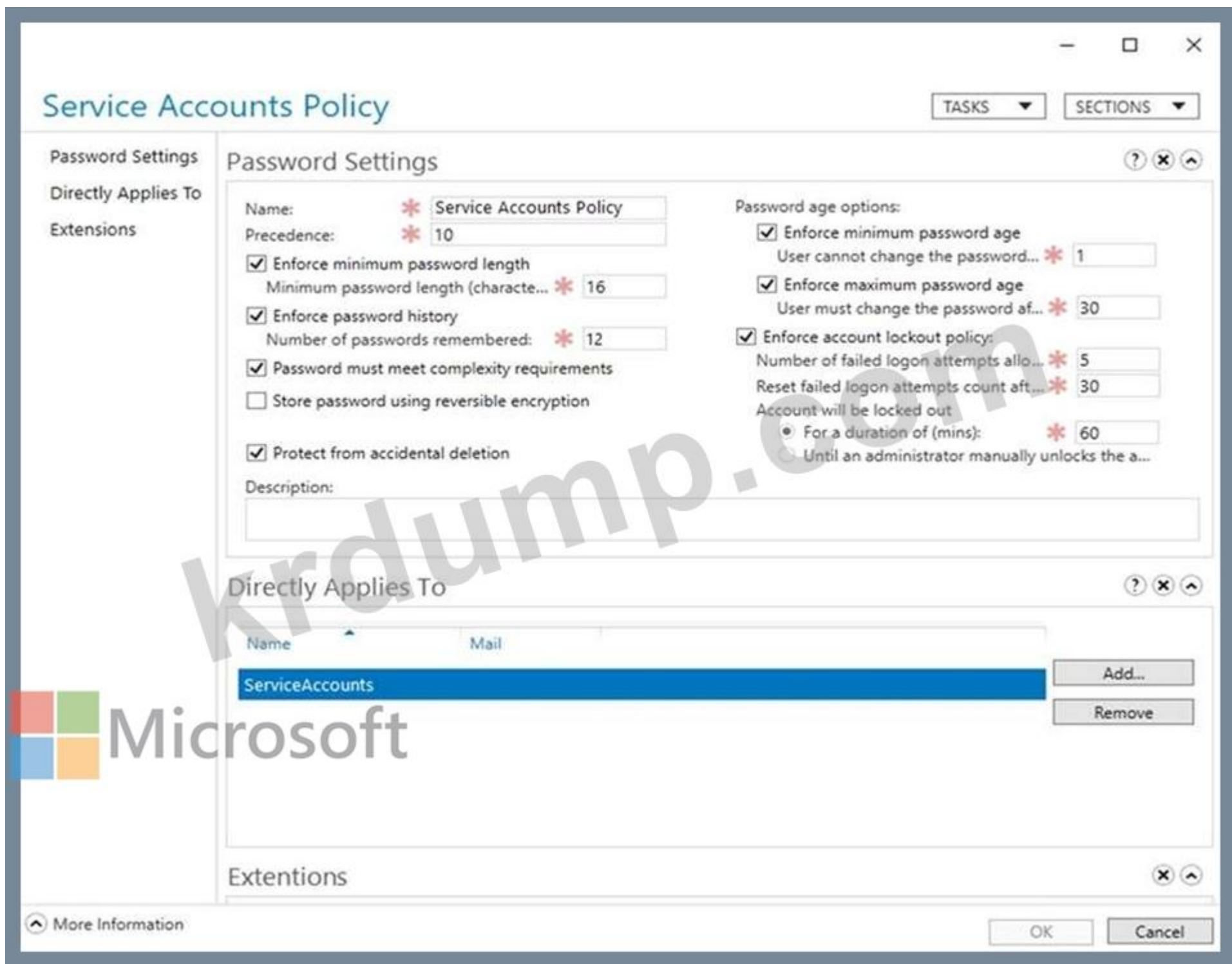
Service Accounts □□ □□□ □□□□ □□ □□□ □□□□□. (□□ □□ □□□□□.)



ServiceAccounts OU() OU . (OU .)



PSO () PSO() . (PSO .)



00 0 000 00 000 000 00 0000000. 000 000 0000 000000.
00: 0 000 000 100 000 00000.

NEW QUESTION: 19

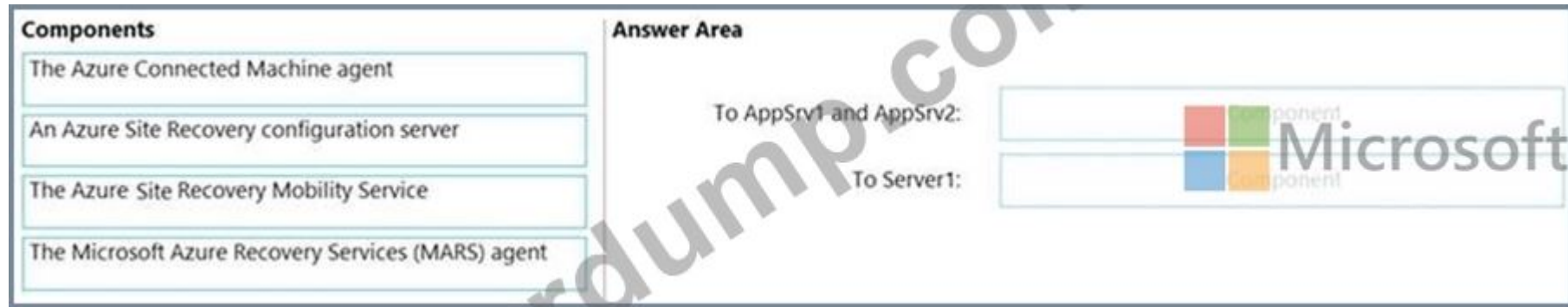
AppSrv1 □ AppSrv2□□ □ □□ □□□ □□□ Server1□□□ □□□□ □□ □□□ □□□□. □□ □□□ Windows Server□ □□□□□. Server1□ □□□□ □□□□ □ □□□□.

Azure Site Recovery□ □□□□ AppSrv1 □ AppSrv2□ Azure□ □□□ □□□□□.

□□□ □□ □□□ AppSrv1, AppSrv2 □ Server1□ □□□□ □□□.

□□ □□ □□□ □□□□ □□□? □□□□□ □□□ □□ □□□ □□□ □□□□□□□□. □ □□ □□□ □ □, □ □ □□ □□ □ □□□□ □□ □ □□□□. □□□□ □□□ □ □□□ □□ □□□ □□□□□□ □□□□□ □ □ □□□□.

□□: □ □□□ □□□ 1□□ □□□ □□□□.



Answer:



□□:

<https://docs.microsoft.com/en-us/azure/site-recovery/physical-azure-architecture>

<https://docs.microsoft.com/en-us/azure/site-recovery/physical-azure-set-up-source>

NEW QUESTION: 20

Server1 □ Server2□□ □ □□ □□□ □□□ FC1□□□ □□ □□ □□□□□ □□□□. FC1□ □□ □□ □□□ □□□□□ □□□□□. □□□□ □□□ □□□□□ FC1□ □□□ □□□□□.

□□□□ □□□ □□ Azure Storage □□□ □□□□□ □□□.

□□□□ □□ □□□□ □□ □□ □ □□ □□ □□□ □□□□□? □□□□□ □□ □□□□ □□□ □□□ □□□□□□□.

□□: □ □□□ □□□ 1□□ □□□ □□□□.

□□ □□ □□□ □□□□□ □□□ □□□□ □□□□ □□□ □□□□ □ □□□□□. □□□ □□□ □□□ □ □□□□□ □ □□□□□ □□□□ □□□ □□□ □□□□.

NEW QUESTION: 22

□□□□□ AD DS(Active Directory □□□ □□□) □□□□ □□□□ □□□□. □□ □□□ □□□□□ Windows Server□ □□□□ Server1□□□ □□□ □□□□ □□□□ UEFI tock□ □□□ Microsoft Defender Credential Guard□ □□□□. Server1□□ Credential Guard□ □□□□□□□. Server1□ Credential Guard □□□ □□ □□ □□□ □□□□ □□□. □□□ □□□ □□ □□□?

- A. □□ □□ □□ □□ □□ □□ □□ □□□□
- B. dism□ □□□□ /Disable-Feature □ /FeatureName:IsolatedUserMode □□□□□ □□□□□.
- C. Device Guard □ Credential Guard □□□□ □□ □□ □□

Answer: A ([LEAVE A REPLY](#))

NEW QUESTION: 23

□□ □□□ □□ GPO(□□ □□ □□)□ GPO □□□□ □□□□□. (GPO □□ □□□□□.)

Group Policy Management

File Action View Window Help

Group Policy Management

- Forest: Fabrikam.com
 - Domains
 - Fabrikam.com
 - Default Domain Policy
 - Domain Controllers
 - ServiceAccounts
 - Group Policy Objects
 - WMI Filters
 - Starter GPOs
 - Sites
 - Group Policy Modeling
 - Group Policy Results

Default Domain Policy

Scope Details Settings Delegation

Default Domain Policy
Data collected on: 10/18/2021 9:06:02 PM [show all](#)

General [hide](#)

Details [show](#)

Links [show](#)

Security Filtering [show](#)

Delegation [show](#)

Computer Configuration (Enabled) [hide](#)

Policies [hide](#)

Windows Settings [hide](#)

Security Settings [hide](#)

Account Policies/Password Policy [hide](#)

Policy	Setting
Enforce password history	24 passwords remembered
Maximum password age	42 days
Minimum password age	1 days
Minimum password length	7 characters
Password must meet complexity requirements	Enabled
Store passwords using reversible encryption	Disabled

Account Policies/Account Lockout Policy [show](#)

Account Policies/Kerberos Policy [show](#)

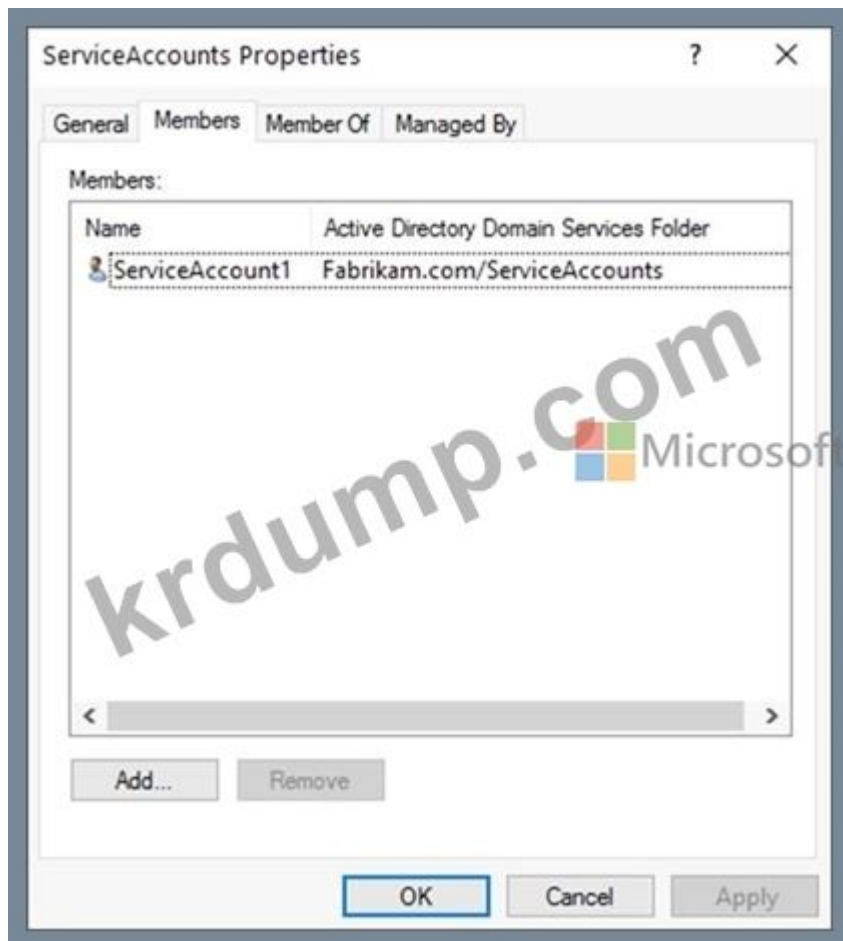
Local Policies/Security Options [show](#)

Public Key Policies/Encrypting File System [show](#)

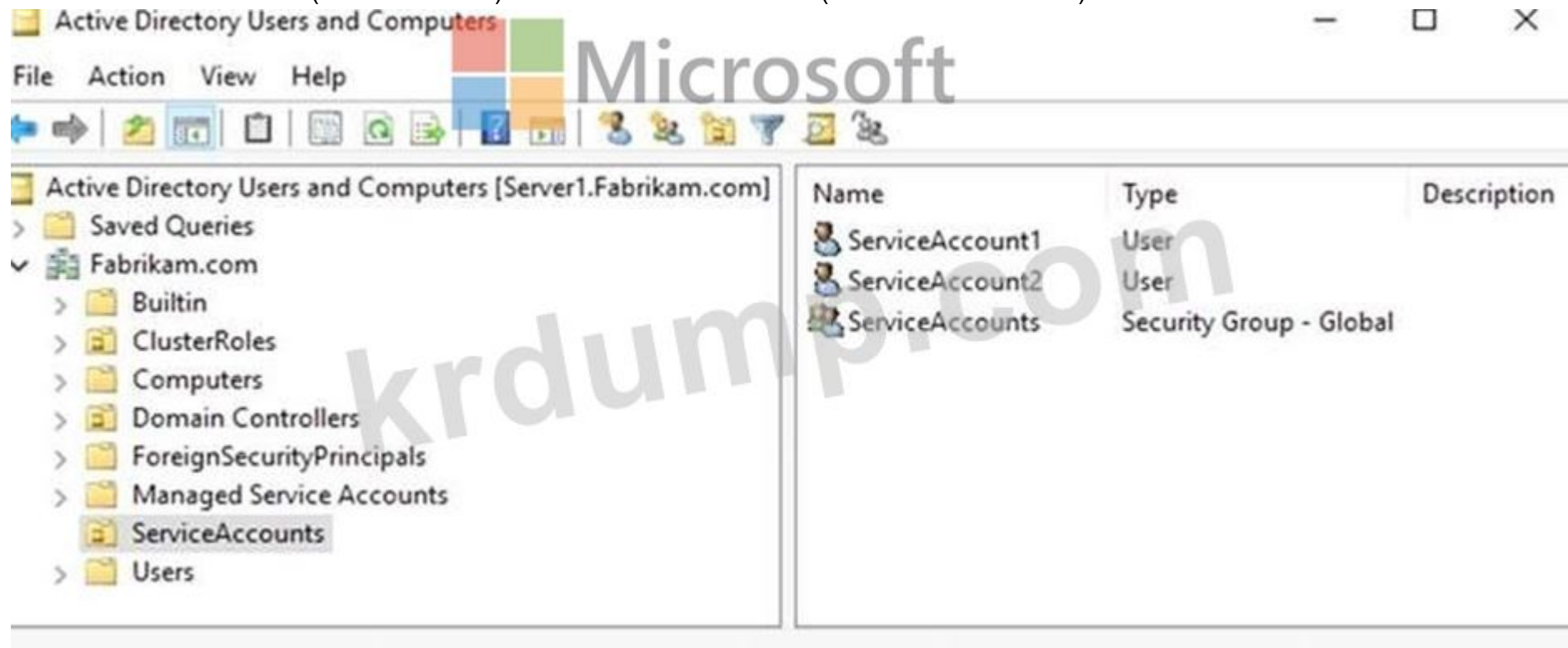
User Configuration (Enabled) [hide](#)

No settings defined.

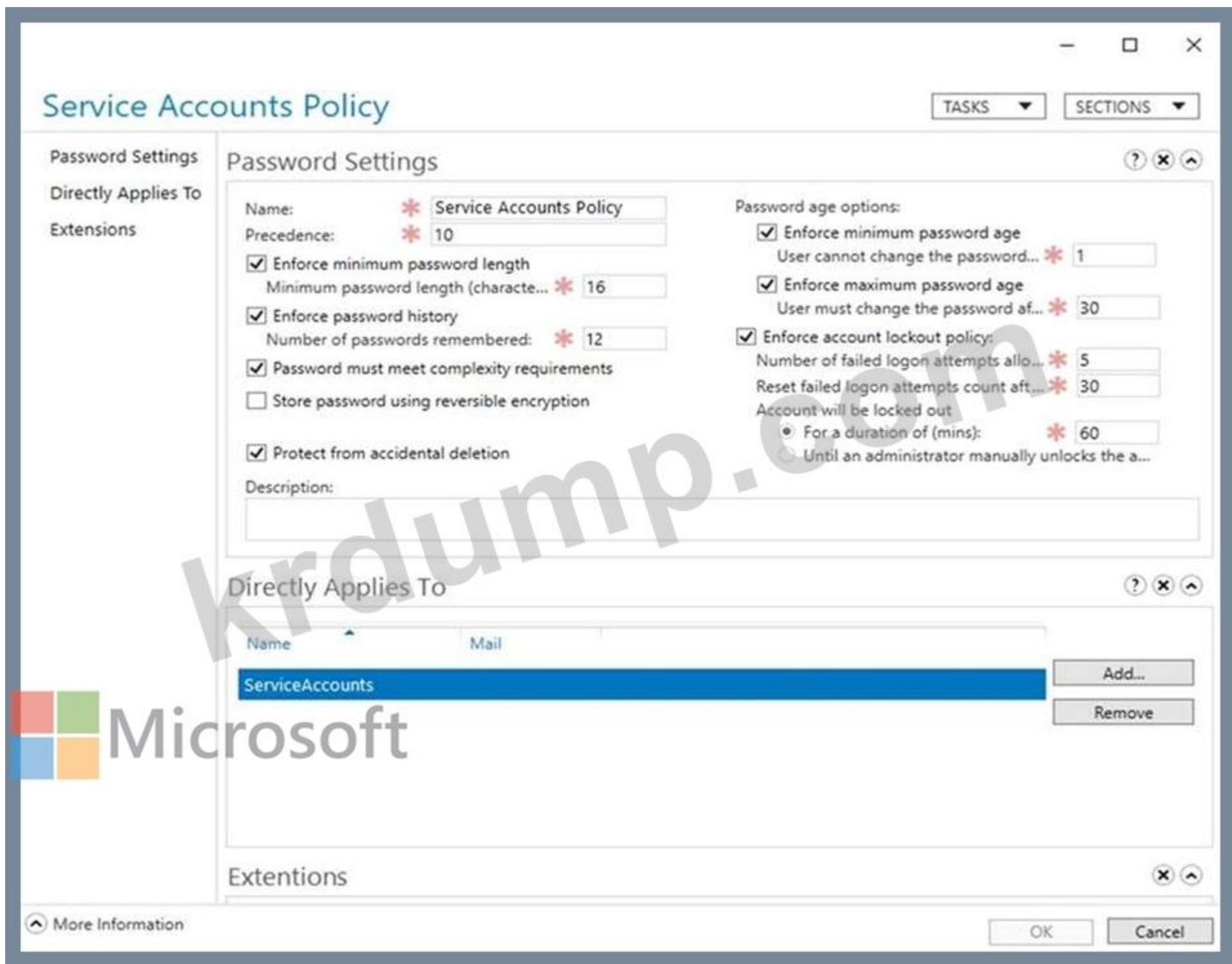
Service Accounts □□ □□□ □□□□ □□ □□□ □□□□□. (□□ □□ □□□□□.)



ServiceAccounts OU() OU . (OU .)



PSO () PSO() . (PSO .)



00 0 000 00 000 000 00 0000000. 000 000 0000 000000.
00: 0 000 000 100 000 00000.

Statements	Yes	No
The password of ServiceAccount1 must be at least 16 characters long.	<input type="radio"/>	<input type="radio"/>
The password of ServiceAccount2 must be at least 16 characters long.	<input type="radio"/>	<input type="radio"/>
Accounts that have the Service Accounts Policy applied can change their password to P@\$w0rd1.	<input type="radio"/>	<input type="radio"/>

Answer:

Statements	Yes	No
The password of ServiceAccount1 must be at least 16 characters long.	<input checked="" type="radio"/>	<input type="radio"/>
The password of ServiceAccount2 must be at least 16 characters long.	<input type="radio"/>	<input checked="" type="radio"/>
Accounts that have the Service Accounts Policy applied can change their password to P@\$w0rd1.	<input checked="" type="radio"/>	<input type="radio"/>

□□:

https://docs.microsoft.com/en-us/windows-server/identity/ad-ds/get-started/adac/introduction-to-active-directory-administrative-center-enhancements--level-100-# fine_grained_pswd_policy_mgmt

NEW QUESTION: 24

□□ □□□ □□ GPO(□□ □□ □□)□ GPO □□□□ □□□□□. (GPO □□ □□□□□.)

Group Policy Management

File Action View Window Help

Group Policy Management

- Forest: Fabrikam.com
 - Domains
 - Fabrikam.com
 - Default Domain Policy
 - Domain Controllers
 - ServiceAccounts
 - Group Policy Objects
 - WMI Filters
 - Starter GPOs
 - Sites
 - Group Policy Modeling
 - Group Policy Results

Default Domain Policy

Scope Details Settings Delegation

Default Domain Policy
Data collected on: 10/18/2021 9:06:02 PM [show all](#)

General [hide](#)

Details [show](#)

Links [show](#)

Security Filtering [show](#)

Delegation [show](#)

Computer Configuration (Enabled) [hide](#)

Policies [hide](#)

Windows Settings [hide](#)

Security Settings [hide](#)

Account Policies/Password Policy [hide](#)

Policy	Setting
Enforce password history	24 passwords remembered
Maximum password age	42 days
Minimum password age	1 days
Minimum password length	7 characters
Password must meet complexity requirements	Enabled
Store passwords using reversible encryption	Disabled

Account Policies/Account Lockout Policy [show](#)

Account Policies/Kerberos Policy [show](#)

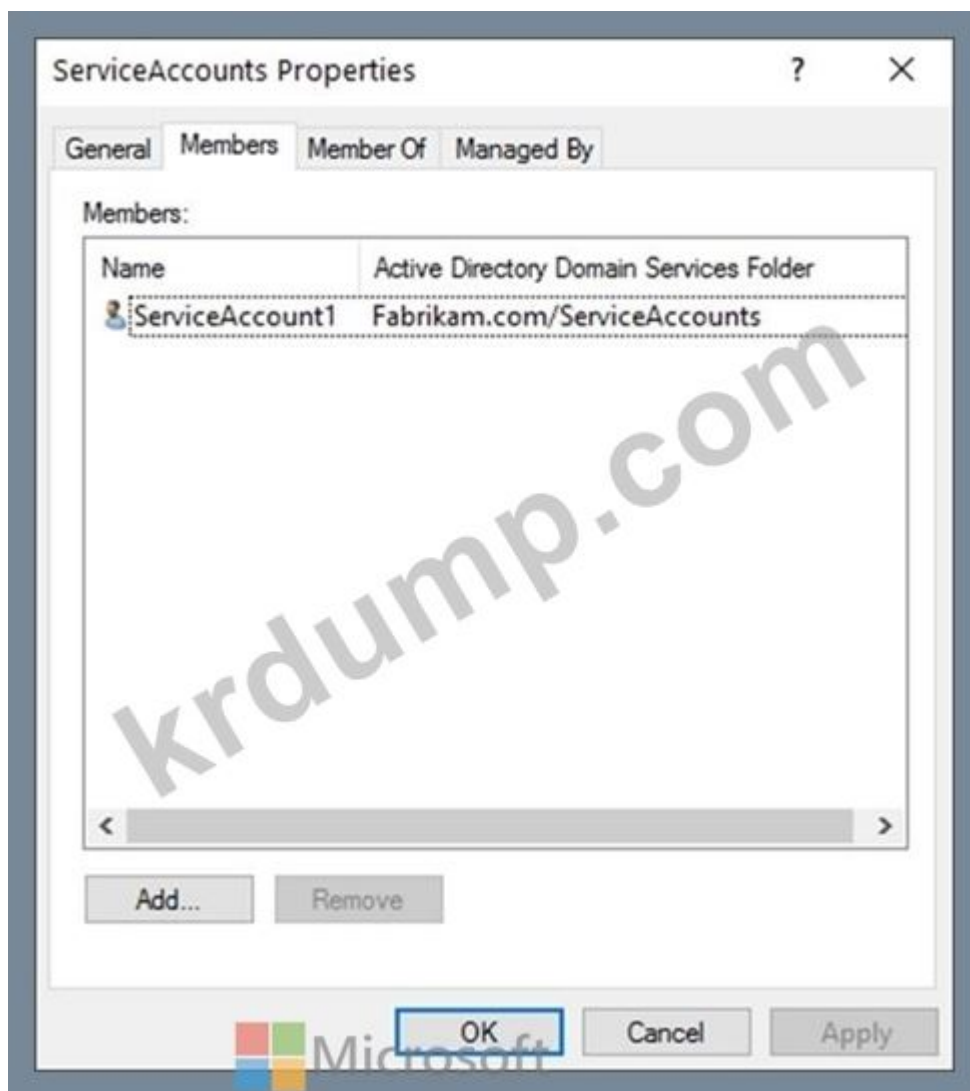
Local Policies/Security Options [show](#)

Public Key Policies/Encrypting File System [show](#)

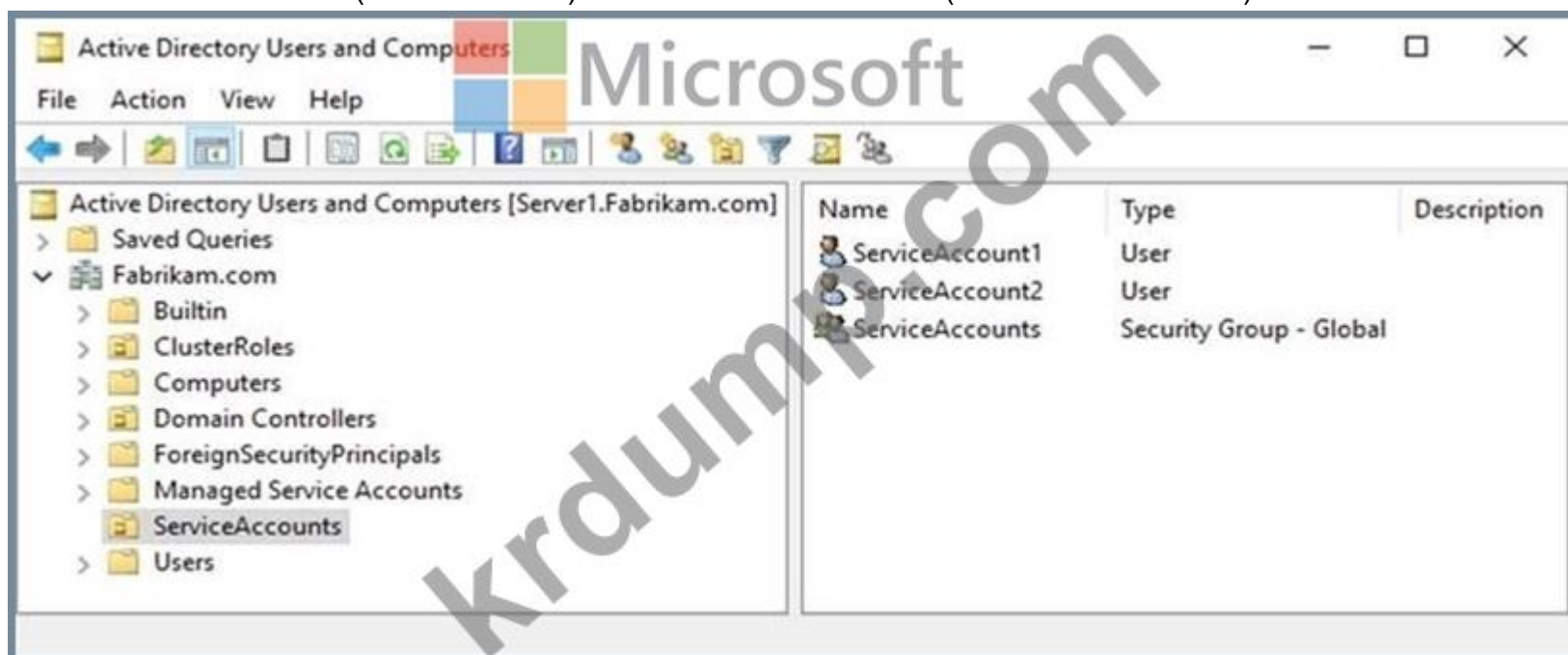
User Configuration (Enabled) [hide](#)

No settings defined.

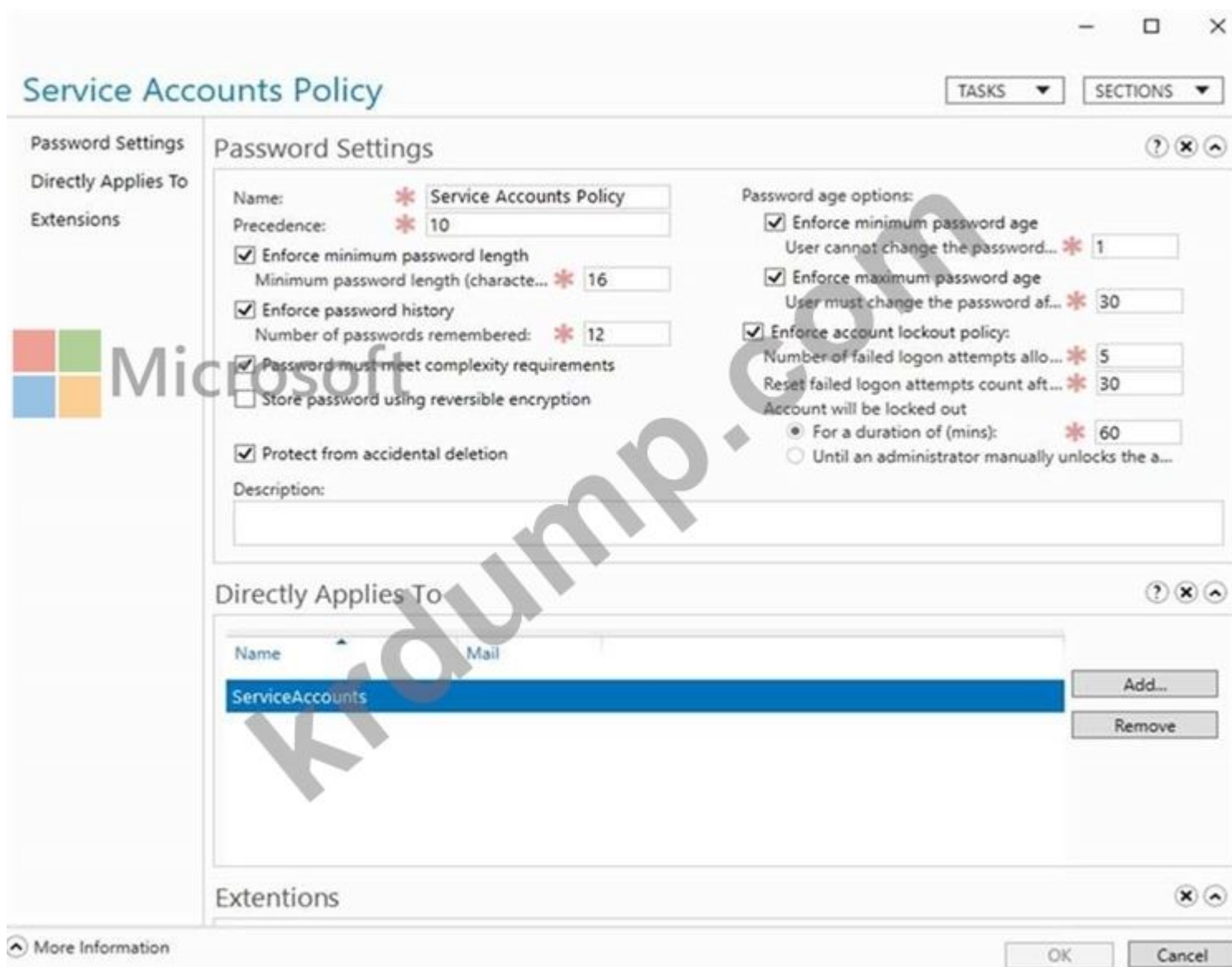
Service Accounts □□ □□□ □□□□ □□ □□□ □□□□□. (□□ □□ □□□□□.)



ServiceAccounts OU(OU OU OU) OU OU OU OU OU. (OU OU OU OU OU.)



PSO OU OU OU OU PSO(OU OU OU) OU OU OU. (PSO OU OU OU OU.)



□□ □ □□□ □□ □□□ □□□ □□ □□□□□□. □□□ □□□ □□□□ □□□□□□.
 □□: □ □□□ □□□ 1□□ □□□ □□□□.

Statements

- The password of ServiceAccount1 must be at least 16 characters long.
- The password of ServiceAccount2 must be at least 16 characters long.
- Accounts that have the Service Accounts Policy applied can change their password to P@\$w0rd1.

Yes	No
<input type="radio"/>	<input type="radio"/>
<input type="radio"/>	<input type="radio"/>
<input type="radio"/>	<input type="radio"/>

Answer:

□□
 □□ □□□□ □□ □□□ □□□ □□□ □□□□

NEW QUESTION: 26

Cluster1 is a failover cluster with three nodes. The nodes are configured as follows:

Name	Server role
Node1	File Server
Node2	File Server
Node3	File Server

HAFS is a failover cluster resource that is configured to move to the best possible node if the current node fails.

Answer Area

- If you select **Move**, and then **Best Possible Node**, HAFS will move to Node3.
- If you stop and start Cluster1, HAFS will come online on Node1.
- If you select **Move, Select Node**, and then **Node2**, HAFS will move to Node2.



Answer:

Answer Area

- If you select **Move**, and then **Best Possible Node**, HAFS will move to Node3.
- If you stop and start Cluster1, HAFS will come online on Node1.
- If you select **Move, Select Node**, and then **Node2**, HAFS will move to Node2.

NEW QUESTION: 27

Windows Server 2016 is configured with IIS. Server1 is a failover cluster with three nodes. The nodes are configured as follows:

* <https://www.contoso.com:8443> URL is configured on the cluster. Microsoft Certificate Authority (CA) is configured on the cluster. SSL is configured on the cluster.

* The cluster is configured with the following settings:

* PHP is installed on the cluster.

APP Service Migration Assistant is installed on the cluster. Azure App Service is configured on the cluster.

The cluster is configured with the following settings:

The cluster is configured with the following settings:

10: The cluster is configured with the following settings:

On Server1:

- Change the authentication method.
- Change the listening port of the website.
- Redevelop the website code by using ASP.NET.

In Azure:

- Create an App Service plan.
- Copy the source files of the website.
- Configure a certificate and a custom domain name.

Answer:

Actions	Answer Area
On Server1, install and register the Azure Connected Machine agent.	Download the Vault Credentials file.
Schedule a backup.	Install and register the Microsoft Azure Recovery Services (MARS) agent.
On Server1, install and register the Azure Site Recovery Mobility service agent.	Schedule a backup.
Download the Vault Credentials file.	
Install and register the Microsoft Azure Recovery Services (MARS) agent.	
Create a recovery plan.	

□□
 □□□ □□□ □□□□□, □□□, □□□□□□ □□ □□ □□

On Server1:

- Change the authentication method.
- Change the listening port of the website.
- Redevelop the website code by using ASP.NET.

In Azure:

- Create an App Service plan.
- Copy the source files of the website.
- Configure a certificate and a custom domain name.

□□:
<https://docs.microsoft.com/en-us/learn/modules/migrate-app-service-migration-assistant/3-understand-assessmen>
<https://docs.microsoft.com/en-us/learn/modules/migrate-app-service-migration-assistant/5-understand-migration>

NEW QUESTION: 28

VM1 is on Azure. How can you ensure that the VM is always up-to-date with the latest updates?

VM1 has Microsoft Defender SmartScreen. How can you ensure that the VM is always up-to-date with the latest updates?

How can you ensure that the VM is always up-to-date with the latest updates?

How can you ensure that the VM is always up-to-date with the latest updates?

A. Use the Windows Update for Business feature to schedule updates.

B. Use the Windows Update for Business feature to schedule updates.

C. Use the Windows Update for Business feature to schedule updates.

D. Windows Update for Business. Use the Windows Update for Business feature to schedule updates.

Answer: C (LEAVE A REPLY)

How can you ensure that the VM is always up-to-date with the latest updates?

<https://docs.microsoft.com/en-us/windows/security/threat-protection/microsoft-defender-smartscreen/microsoft-defender-smartscreen-overview>

NEW QUESTION: 29

contoso.com is an Active Directory (AD) domain. The domain contains three domain controllers (DCs) as shown in the following table.

Windows Server 2012 R2. The domain controllers are configured as follows.

Name	Operating system	FMSO role
DC1	Windows Server 2012 R2	All
DC2	Windows Server 2022	None
DC3	Windows Server 2019	None

DC1 is the only domain controller that has the FSMO roles. DC2 and DC3 are backup domain controllers.

* DC1 is the only domain controller that has the FSMO roles.

* FSMO roles are distributed among the domain controllers.

How can you ensure that the FSMO roles are distributed among the domain controllers?

How can you ensure that the FSMO roles are distributed among the domain controllers?

NEW QUESTION: 32

Windows Server 2016 R2. The organization has a Microsoft Azure Backup vault. The organization wants to back up the Windows Server 2016 R2 servers to the Azure Backup vault. The organization wants to back up the Windows Server 2016 R2 servers to the Azure Backup vault. The organization wants to back up the Windows Server 2016 R2 servers to the Azure Backup vault. The organization wants to back up the Windows Server 2016 R2 servers to the Azure Backup vault.

Actions	Answer Area
Run the Register Server Wizard.	
From Microsoft Azure Backup, run the Schedule Backup Wizard.	
From Microsoft Azure Backup, run the Back Up Now Wizard.	
Download the Microsoft Azure Recovery Services (MARS) agent and the Vault Credentials file.	
Run the Microsoft Azure Recovery Services Agent Setup Wizard.	

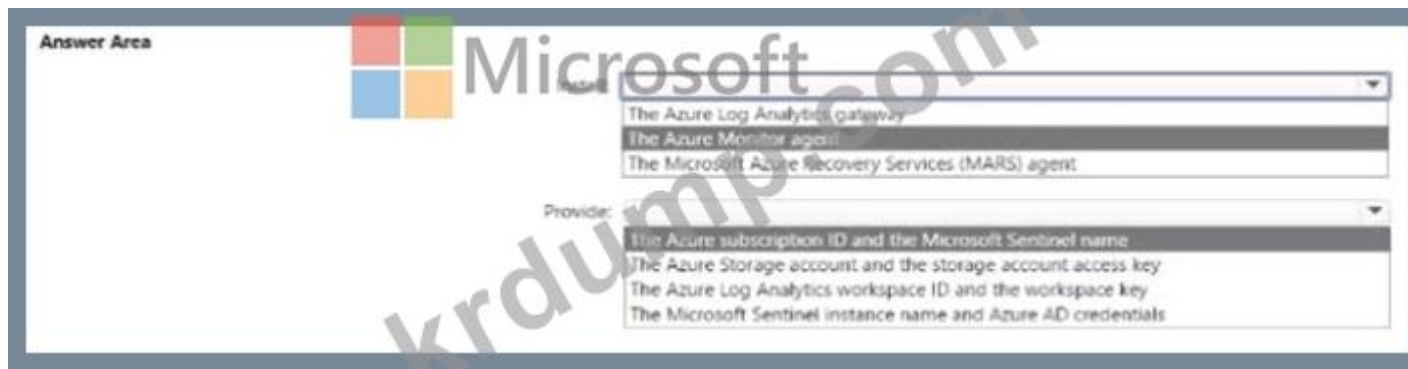
Answer:

Actions	Answer Area
Run the Register Server Wizard.	Download the Microsoft Azure Recovery Services (MARS) agent and the Vault Credentials file.
From Microsoft Azure Backup, run the Schedule Backup Wizard.	Run the Microsoft Azure Recovery Services Agent Setup Wizard.
From Microsoft Azure Backup, run the Back Up Now Wizard.	Run the Register Server Wizard.
Download the Microsoft Azure Recovery Services (MARS) agent and the Vault Credentials file.	From Microsoft Azure Backup, run the Schedule Backup Wizard.
Run the Microsoft Azure Recovery Services Agent Setup Wizard.	From Microsoft Azure Backup, run the Back Up Now Wizard.

1. <https://docs.microsoft.com/en-us/azure/backup/install-mars-agent#download-the-mars-agent>
2. <https://docs.microsoft.com/en-us/azure/backup/backup-windows-with-mars-agent>

NEW QUESTION: 33

Server1 is a Windows Server 2016 R2 server. The organization wants to back up the Windows Server 2016 R2 servers to the Azure Backup vault. The organization wants to back up the Windows Server 2016 R2 servers to the Azure Backup vault. The organization wants to back up the Windows Server 2016 R2 servers to the Azure Backup vault. The organization wants to back up the Windows Server 2016 R2 servers to the Azure Backup vault.



Answer:



NEW QUESTION: 34

5 Azure Storage accounts. Each account is connected to a single Azure Storage account. Each account is connected to a single Azure Storage account. Each account is connected to a single Azure Storage account.

- A. Azure Monitor agent
- B. Azure Storage account
- C. Azure Log Analytics workspace
- D. Telegraf agent
- E. Azure Connected Machine agent

Answer: B (LEAVE A REPLY)

NEW QUESTION: 35

Cluster3 is a Hyper-V cluster. Each node is connected to a single Azure Storage account. Each node is connected to a single Azure Storage account.

- A. Windows Server 2016 Datacenter
- B. Windows Server 2016 Standard
- C. Windows Server 2016 Essentials
- D. Windows Server 2016 Core

Answer: D (LEAVE A REPLY)

Hyper-V is a virtualization technology. Each node is connected to a single Azure Storage account. Each node is connected to a single Azure Storage account.

<https://docs.microsoft.com/en-us/virtualization/community/team-blog/2012/20120327-why-is-the-hyper-v-replica-broker-required>

NEW QUESTION: 36

Windows Server 2016 Hyper-V cluster. Server1, Server2, Server3 are connected to a single Azure Storage account. Each node is connected to a single Azure Storage account.

□□□□ □□ □□□□□ □□ □□□ □□□ □ □□□ □□□□ □□□.
 □□ □ □□ □□□ □□□□ □□□□ □□□? □□□□□ □□ □□□□ □□ □□□ □□ □□□□ □□□□ □□□ □□□ □□□□□
 □.

Actions	Answer Area
Create a failover cluster.	
Create a Distributed File System (DFS) namespace.	
Enable Storage Spaces Direct.	
Create a volume.	
Add a Scale-Out File Server for application role.	
Create a file share.	

Answer:

□□
 □□□ □□□ □□□□□, □□□, □□□□□□ □□ □□ □□

Create a failover cluster.
Enable Storage Spaces Direct.
Create a volume.

□□:
<https://docs.microsoft.com/en-us/system-center/vmm/s2d-hyper-converged?view=sc-vmm-2019>

NEW QUESTION: 37

□□□□□□ AD DS> □□□□ □□□□ □□□□. □□□□□□ 20□□ Active Directory □□□□ □□□□ □□□□. □□ □□□ □□□ □
 □ □□□□□ □□□□□.
 □□□ □□□□ □□□□□.
 □□ □□ □□□ □□ □□□□ □□□ □□□□□ □□□□ □□ □□ □□□□□□.
 □□ □□ □□□ □□ □□□ □□□□□ □□□□□ □□□□ □□□.
 □□□ □□□□ □□□□?

- A. □□ □□ □□□(FRS) □□ □□
- B. Microsoft □□ □ □□ □□□
- C. Active Directory □□□ □ □□□
- D. Active Directory □□ □□ □□

Answer: C (LEAVE A REPLY)

NEW QUESTION: 38

□□□□□□ AD DS(Active Directory □□□ □□□) □□□□□ □□□□ □□□□. □□□□□□ □□ □□ □□□ □□□□ □□□□ □
 □□□.

Fabrikam Azure AD(Azure Active Directory) AD DS(Active Directory Domain Services). AD DS corp.fabrikam.com europe.fabrikam.com.

Windows Server 2016

Windows Server 2016

Name	Type	Configuration
HV1	Physical	Hyper-V host
HV2	Physical	Hyper-V host
APP1	Virtual machine	Application server
APP2	Virtual machine	Application server
APP3	Virtual machine	Application server
APP4	Virtual machine	Application server
DC1	Virtual machine	Domain controller
Archive1	Physical	File server
DHCP1	Virtual machine	DHCP server
Fileserver1	Virtual machine	File server
WEB1	Virtual machine	Web server
WEB2	Virtual machine	Web server
AADC1	Virtual machine	Azure AD Connect

corp.fabrikam.com

HV1 HV2 Cluster1

WEB1 WEB2 (IIS) https://www.fabrikam.com URL

\\Fileserver1\Data UNC

Windows Server 2016

europe.fabrikam.com dc2.europe.fabrikam.com

Windows Server 2016

VPN

DHCP1 IP

Windows Server 2016

Fabrikam

NTLMv1, SMB1 LDAP AD DS

Windows Defender

Windows Defender

Windows Defender

Fabrikam

Windows Defender

BitLocker (BitLocker)

Microsoft Sentinel

Microsoft Sentinel

Windows Server 2022

Windows Server 2022

APP1 APP2 Windows Server 2022 Cluster2 Hyper-V

Cluster2 HV3 HV4

CSV

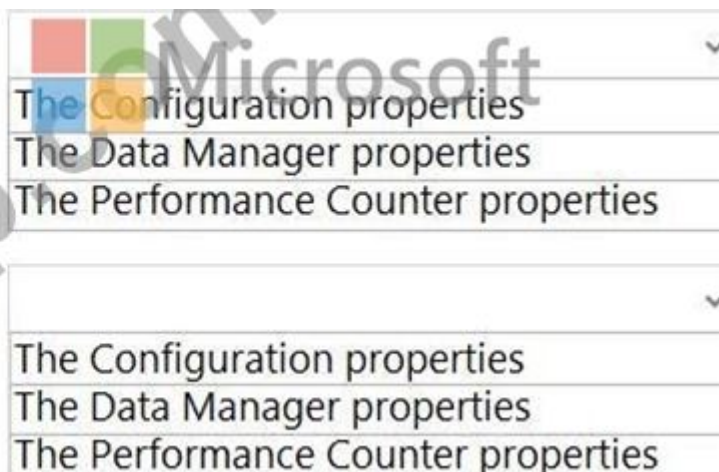
Archive1 Windows Server 2022 Cluster3

Cluster3 Node1 Node2
 Cluster3
 europe.fabrikam.com corp.fabrikam.com
 ADMT(Active Directory Migration Tool)
 ADMTcomputer ADMT corp.fabrikam.com
 Fileserver1 Windows Server 2022 Fileserver2
 UNC
 Azure
 Fabrikam Azure
 Sub1 Azure
 Vnet1 Azure
 ExpressRoute Vnet1
 Microsoft Defender
 APP3 APP4 Azure
 www.fabrikam.com WebApp1 Azure App Service
 WEB1 WEB2
 DHCP
 Fabrikam DHCP1 DHCP2
 DHCP2 DHCP1 IP
 DHCP2 DHCP1
 100

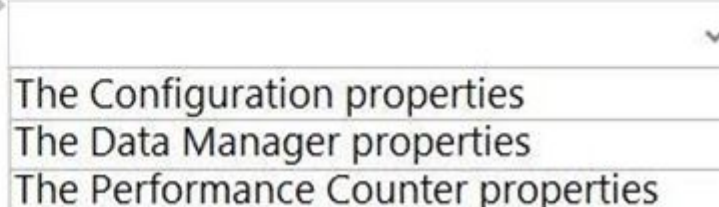
NEW QUESTION: 41

Windows Server Server1
 Server1 CollectorSet1
 CollectorSet1
 *
 * 500MB
 ?
 100

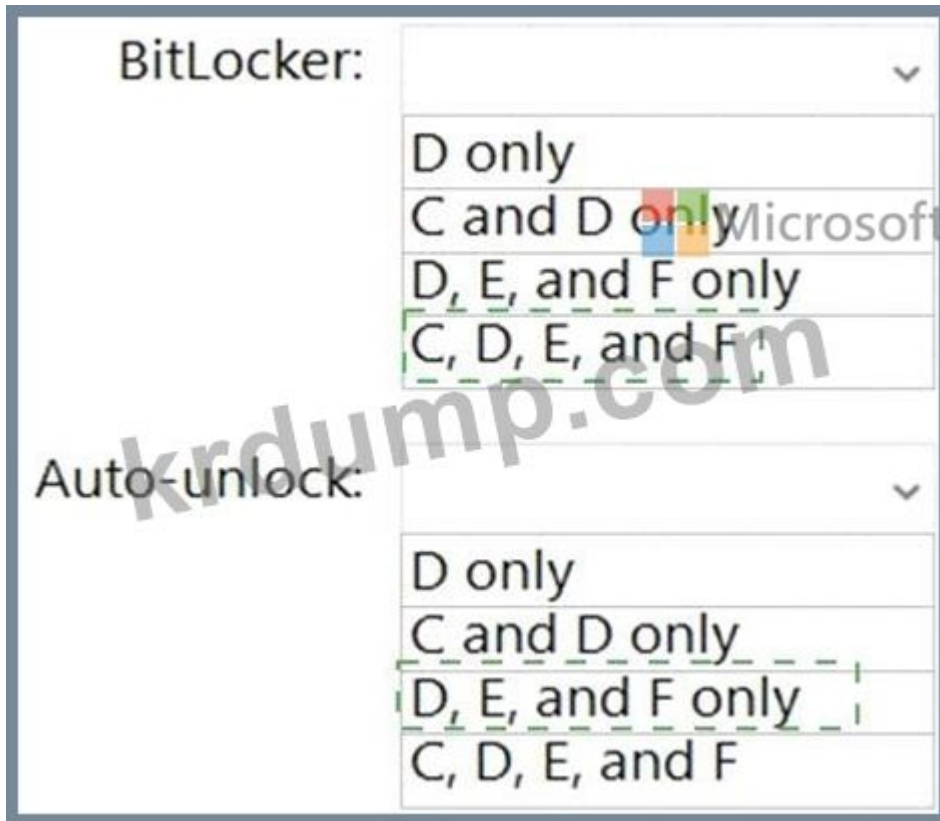
Older performance counter logs must be overwritten by new ones:



Performance counter logging must stop if there is less than 500 MB of free disk space:



Answer:



□□

□□ □□□□ □□ □□□ □□□ □□



NEW QUESTION: 42

□ □□ □□□ □□□ Cluster1□□□ □□ □□ □□□□□ □□□□.

File1 □ File2□□ □ □□ □□ □□ □□□□ □□□ Cluster1□ □□□ □□□□□. File1□ □□ □□ □□□ □□ □□ □□□□□.

File2□ □□□□□□ □□□ □□□ □□□ □□ □□ □□□ □□□□□.

□□□□□ □□□ □□□ □□□ □ □□ File1 □ File2□ □□ □□ □□ □□□□□? □□□□□ □□ □□□□ □□□ □□□ □□□□□

□.

□□: □ □□□ □□□ 1□□ □□□ □□□□.

File1:

File2:

Answer:

Microsoft File1:

File2:

□□:

<https://docs.microsoft.com/en-us/windows-server/failover-clustering/safs-overview>

NEW QUESTION: 43

□□□□□□ AD DS(Active Directory □□□ □□□) □□□□ □□□□ □□□□.

□□ □□ □□□ □□□□ □□□□ □□□□ □□□.

* Domain Admins □□□ □□□□ □□□□□ □□□□ □ □□□ □□□.

* □□□□

* Domain Admins □□ □□□□ □□ Kerberos TGT(Ticket Granting Ticket)□ □□□ 1□□□□ □□□□□ □□□. □□ □ □□□□ □□

□□ □□ □ □□ □□□ □□□□□? □□□□□ □□ □□□□ □□ □□□ □□ □□□□ □□□□ □□□ □□□ □□□□□□.

Server2 Hyper-V □□□ □□□□ □ □□ □□□ □□ □□□ □□□□ □□□?

- A. □□
- B. □□
- C. □□□□ □□ □□□□
- D. □□□ □□ □□

Answer: C ([LEAVE A REPLY](#))

□□:

<https://docs.microsoft.com/en-us/windows-server/virtualization/hyper-v/manage/set-up-hyper-v-replica>

NEW QUESTION: 46

200□□ Azure □□ □□□ □□□□.

□□ □□ □□□ Azure □□□□ □□ □□(failover)□□ □□ Azure Site Recovery□□ □□ □□□ □□□□. □□□□ □ □□ □□ □□□ □□□□.

□□ □□ □ □□□ □□□□ □□□□□ □□□□ □□□.

□□□ □□□□ □□□?

- A. Azure DSC(Desired State Configuration) □□ □□ □□
- B. Azure Automation Runbook
- C. Azure PowerShell □□
- D. □□ □□□ □□□ □□ □□□□ □□

Answer: B ([LEAVE A REPLY](#))

□□:

<https://docs.microsoft.com/en-us/azure/site-recovery/recovery-plan-overview>

AZ-801 □□ □□□ □□□□□ □□ DumpTop □□ □□□□ □□□ AZ-801 □□! DumpTop □ □□ **AZ-801** □□ □□□ □□□□□□, DumpTop AZ-801 □□ □□□ □□□□□□□□ □□□ □□□□□□□□. □□□□ □□□ □□□□ □□ DumpTop AZ-801 □□□ □□ □□□. <https://www.dumptop.com/Microsoft/AZ-801-dump.html> (270 Q&As Dumps, **30%OFF Special Discount: KrDump**)

NEW QUESTION: 47

Windows Server□ □□□□ □□□ □□□□.

□□ □□□□□ □□□□ □ □ Azure Recovery Services □□ □□ □□□ □□□ □□□ □□□□□.

□□ □□□ □□□□ □□□ □□ □□ □□□ □□□□ □□□.

□□ □□□ □□□ □□□□ □□□? □□□□□ □□ □□□□ □□ □□□ □□□□ □□□□ □□□ □□□ □□□□□□.

Actions	Answer Area
Run the Register Server Wizard.	
From Microsoft Azure Backup, run the Schedule Backup Wizard.	
From Microsoft Azure Backup, run the Back Up Now Wizard.	
Download the Microsoft Azure Recovery Services (MARS) agent and the Vault Credentials file.	
Run the Microsoft Azure Recovery Services Agent Setup Wizard.	

Answer:

Actions	Answer Area
Run the Register Server Wizard.	Download the Microsoft Azure Recovery Services (MARS) agent and the Vault Credentials file.
From Microsoft Azure Backup, run the Schedule Backup Wizard.	Run the Microsoft Azure Recovery Services Agent Setup Wizard.
From Microsoft Azure Backup, run the Back Up Now Wizard.	Run the Register Server Wizard.
Download the Microsoft Azure Recovery Services (MARS) agent and the Vault Credentials file.	From Microsoft Azure Backup, run the Schedule Backup Wizard.
Run the Microsoft Azure Recovery Services Agent Setup Wizard.	From Microsoft Azure Backup, run the Back Up Now Wizard.

□□:

<https://docs.microsoft.com/en-us/azure/backup/install-mars-agent#download-the-mars-agent>

<https://docs.microsoft.com/en-us/azure/backup/backup-windows-with-mars-agent>

NEW QUESTION: 48

□□ □□□ Windows Server □ □□□□ □□□ 10□ □□□□.

□□ □□ □□ □□□□ □□□□ □□□□□□ □□□ □□□□ □□□. □□□□ □□□ □ □□□□ □□□.

□□ □□ □□□□ □□ □□ □□□ □□□□ □□□?

A. NTLMv2

B. □□ □□ □

C. □□□□□V5

D. □□□ □□□

Answer: D (LEAVE A REPLY)

□□:

<https://docs.microsoft.com/en-us/windows/security/threat-protection/windows-firewall/create-an-authentication-request-rule>

NEW QUESTION: 49

□□ □□ □□□ □□□ □□□□.

Name	Operating system	Configuration	Install option
Server1	Windows Server 2012 R2	File server	Server Core
Server2	Windows Server 2022	File server	Server Core
Server3	Windows Server 2016	Domain controller	Server with Desktop Experience

Server1 Server2 Server3

Storage Migration Service: Server1 Server2 Server3

Storage Migration Service extension: Server1 Server2 Server3



Answer:

- Server1
- Server2
- Server3

NEW QUESTION: 50

AD DS(Active Directory) configuration task.

Domain Admins group configuration task.

Domain Admins group Kerberos TGT(Ticket Granting Ticket) configuration task. Domain Admins group Kerberos TGT(Ticket Granting Ticket) configuration task. Domain Admins group Kerberos TGT(Ticket Granting Ticket) configuration task.

Actions	Answer Area
Create a Dynamic Access Control central access policy.	
Configure the Kerberos Policy settings for the Default Domain Policy Group Policy Object (GPO).	
Create a Dynamic Access Control claim type.	
Create an authentication policy.	
Assign the authentication policy silo to user and computer accounts.	
Create an authentication policy silo.	

Answer:

Actions	Answer Area
Create a Dynamic Access Control central access policy.	Create an authentication policy.
Configure the Kerberos Policy settings for the Default Domain Policy Group Policy Object (GPO).	Create an authentication policy silo.
Create a Dynamic Access Control claim type.	Assign the authentication policy silo to user and computer accounts.
Create an authentication policy.	
Assign the authentication policy silo to user and computer accounts.	
Create an authentication policy silo.	

Server1:

<https://docs.microsoft.com/en-us/windows-server/identity/ad-ds/manage/how-to-configure-protected-accounts>

NEW QUESTION: 51

500 Azure VMs running Windows Server 2016.

The VMs are running in a single Azure Storage account. The VMs are running in a single Azure Storage account. The VMs are running in a single Azure Storage account.

- A. Azure Connected Machine Agent
- B. Azure Monitor Agent
- C. Azure Storage Agent
- D. Telegraf Agent
- E. Azure VM Agent

Answer: E (LEAVE A REPLY)

00:

<https://docs.microsoft.com/en-us/azure/azure-monitor/agents/diagnostics-extension-overview>

00 2, Fabrikam Inc

00 00

ID 000

Fabrikam00 Azure AD(Azure Active Directory) 0000 000000 AD DS(Active Directory Domain Services) 000000 00000. AD DS 0000000 corp.fabrikam.com 0 europe.fabrikam.com0000 0 00 00000 00000.

0000 0000 000000 00

0000 000000 00 00 00 Windows Server 20160 00000 000000 0000 00000.

Name	Type	Configuration
HV1	Physical	Hyper-V host
HV2	Physical	Hyper-V host
APP1	Virtual machine	Application server
APP2	Virtual machine	Application server
APP3	Virtual machine	Application server
APP4	Virtual machine	Application server
DC1	Virtual machine	Domain controller
Archive1	Physical	File server
DHCP1	Virtual machine	DHCP server
Fileserver1	Virtual machine	File server
WEB1	Virtual machine	Web server
WEB2	Virtual machine	Web server
AADC1	Virtual machine	Azure AD Connect

0000 00000 00 0000 corp.fabrikam.com 00000 00000.

0000 00000 00 00 0000 HV1 0 HV200 0000000. HV1 0 HV20 Cluster10000 00 00 000000 000000.

WEB10 WEB20 0000 00 0000(IIS) 000000 000000. 0000 00000 https://www.fabrikam.com0 URL0 00000 0 0000 0 000000.

0000 00000 00 00000 \\Fileserver1\Data0 UNC 0000 00000 00 000000 000000.

00 000000 00

0000 000000 Windows Server 20160 00000 europe.fabrikam.com 00000 0000 0000000 dc2.europe.fabrikam.com0000 0 00 0000 00000.

00000 0000

00000 00 00000 00000000 00 0000 0000 00000. 00000 00 00000 VPN 0000 00000 000000.

0000 00000 000000 00000 DHCP100 IP 0000 000000.

00 00

Fabrikam0 0000 00 00 0000 000000.

00 0000 NTLMv1, SMB1 0 00000 00 LDAP0 00 00000 00 000000 000000 AD DS 00000 000000.

Windows Defender 防病毒引擎 扫描。 防病毒引擎 扫描 防病毒引擎 扫描 防病毒引擎 扫描 防病毒引擎 扫描。
防病毒引擎
防病毒引擎

Fabrikam 防病毒引擎 扫描 防病毒引擎 扫描 防病毒引擎 扫描。

防病毒引擎 Windows Defender 防病毒引擎 扫描 防病毒引擎 扫描。

BitLocker 防病毒引擎 (BitLocker) 防病毒引擎 扫描 防病毒引擎 扫描 防病毒引擎 扫描。

防病毒引擎 扫描 防病毒引擎 扫描 防病毒引擎 扫描 防病毒引擎 扫描 防病毒引擎 扫描。

防病毒引擎 扫描 防病毒引擎 扫描 防病毒引擎 扫描 防病毒引擎 扫描 防病毒引擎 扫描 Microsoft Sentinel 防病毒引擎 扫描。

防病毒引擎 扫描 防病毒引擎 扫描

Fabrikam 防病毒引擎 扫描 防病毒引擎 扫描 防病毒引擎 扫描 防病毒引擎 扫描 防病毒引擎 扫描 防病毒引擎 扫描。

防病毒引擎 扫描 APP1 APP2 防病毒引擎 扫描 Windows Server 2022 防病毒引擎 扫描 Cluster2 防病毒引擎 扫描 Hyper-V 防病毒引擎 扫描 防病毒引擎 扫描 防病毒引擎 扫描。

Cluster2 防病毒引擎 扫描 HV3 防病毒引擎 扫描 HV4 防病毒引擎 扫描 防病毒引擎 扫描 防病毒引擎 扫描。

防病毒引擎 扫描 CSV(防病毒引擎 扫描 防病毒引擎 扫描) 防病毒引擎 扫描。

Archive1 防病毒引擎 扫描 Windows Server 2022 防病毒引擎 扫描 Cluster3 防病毒引擎 扫描 防病毒引擎 扫描 防病毒引擎 扫描 防病毒引擎 扫描。

Cluster3 防病毒引擎 扫描 Node1 防病毒引擎 扫描 Node2 防病毒引擎 扫描 防病毒引擎 扫描 防病毒引擎 扫描。

Cluster3 防病毒引擎 扫描 防病毒引擎 扫描 防病毒引擎 扫描 防病毒引擎 扫描 防病毒引擎 扫描 防病毒引擎 扫描。

防病毒引擎 扫描, 防病毒引擎 扫描 防病毒引擎 扫描 europe.fabrikam.com 防病毒引擎 扫描 corp.fabrikam.com 防病毒引擎 扫描 防病毒引擎 扫描。

防病毒引擎 扫描 ADMT(Active Directory Migration Tool) 防病毒引擎 扫描 防病毒引擎 扫描。

ADMTcomputer 防病毒引擎 扫描 防病毒引擎 扫描 ADMT 防病毒引擎 扫描 防病毒引擎 扫描 防病毒引擎 扫描 corp.fabrikam.com 防病毒引擎 扫描 防病毒引擎 扫描。

防病毒引擎 扫描 防病毒引擎 扫描 防病毒引擎 扫描。

Fileserver1 防病毒引擎 扫描 Windows Server 2022 防病毒引擎 扫描 Fileserver2 防病毒引擎 扫描 防病毒引擎 扫描 防病毒引擎 扫描 防病毒引擎 扫描 防病毒引擎 扫描。 防病毒引擎 扫描 防病毒引擎 扫描 防病毒引擎 扫描。

防病毒引擎 扫描 UNC 防病毒引擎 扫描 防病毒引擎 扫描 防病毒引擎 扫描 防病毒引擎 扫描。

Azure 防病毒引擎 扫描 防病毒引擎 扫描

Fabrikam 防病毒引擎 扫描 防病毒引擎 扫描 Azure 防病毒引擎 扫描 防病毒引擎 扫描 防病毒引擎 扫描 防病毒引擎 扫描 防病毒引擎 扫描 防病毒引擎 扫描。

Sub1 防病毒引擎 扫描 Azure 防病毒引擎 扫描 防病毒引擎 扫描。

Vnet1 防病毒引擎 扫描 Azure 防病毒引擎 扫描 防病毒引擎 扫描 防病毒引擎 扫描。

ExpressRoute 防病毒引擎 扫描 防病毒引擎 扫描 防病毒引擎 扫描 防病毒引擎 扫描 Vnet1 防病毒引擎 扫描 防病毒引擎 扫描。

防病毒引擎 扫描 Microsoft Defender 防病毒引擎 扫描 防病毒引擎 扫描 防病毒引擎 扫描 防病毒引擎 扫描。

APP3 防病毒引擎 扫描 APP4 防病毒引擎 扫描 Azure 防病毒引擎 扫描 防病毒引擎 扫描 防病毒引擎 扫描。

www.fabrikam.com 防病毒引擎 扫描 防病毒引擎 扫描 WebApp1 防病毒引擎 扫描 Azure App Service 防病毒引擎 扫描 防病毒引擎 扫描 防病毒引擎 扫描。

WEB1 防病毒引擎 扫描 WEB2 防病毒引擎 扫描 防病毒引擎 扫描。

DHCP 防病毒引擎 扫描 防病毒引擎 扫描

Fabrikam 防病毒引擎 扫描 DHCP1 防病毒引擎 扫描 DHCP2 防病毒引擎 扫描 防病毒引擎 扫描 防病毒引擎 扫描 防病毒引擎 扫描 防病毒引擎 扫描 防病毒引擎 扫描 防病毒引擎 扫描。

DHCP2 防病毒引擎 扫描 DHCP1 防病毒引擎 扫描 防病毒引擎 扫描 防病毒引擎 扫描 IP 防病毒引擎 扫描 防病毒引擎 扫描 防病毒引擎 扫描。

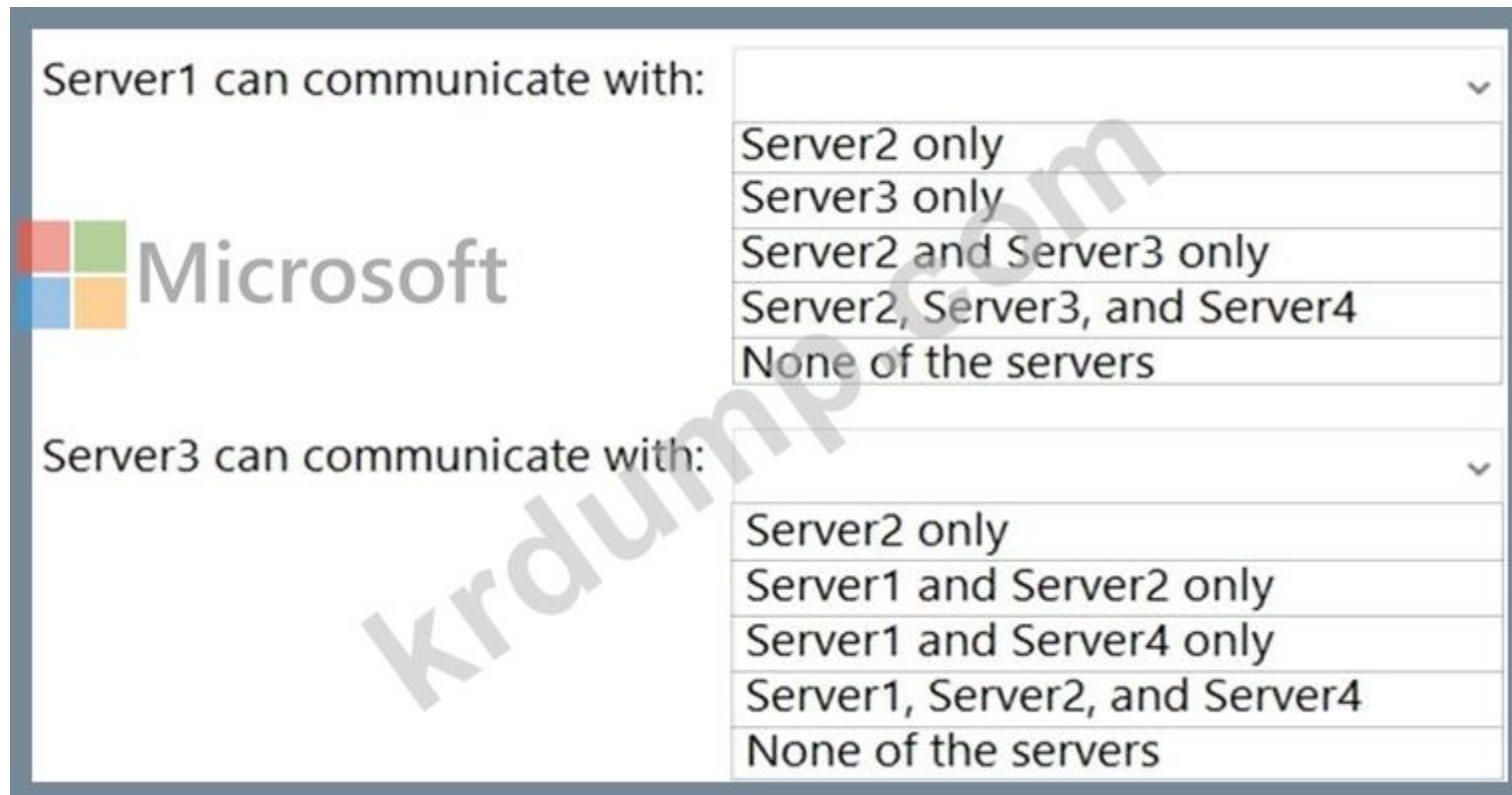
DHCP2 防病毒引擎 扫描 防病毒引擎 扫描 防病毒引擎 扫描 DHCP1 防病毒引擎 扫描 防病毒引擎 扫描 防病毒引擎 扫描 防病毒引擎 扫描 防病毒引擎 扫描。

防病毒引擎 扫描 防病毒引擎 扫描 防病毒引擎 扫描 防病毒引擎 扫描 防病毒引擎 扫描。

NEW QUESTION: 52

Server1 防病毒引擎 扫描 Server3 防病毒引擎 扫描 防病毒引擎 扫描 防病毒引擎 扫描 防病毒引擎 扫描? 防病毒引擎 扫描 防病毒引擎 扫描 防病毒引擎 扫描 防病毒引擎 扫描 防病毒引擎 扫描。

□□: □ □□□ □□□ 1□□ □□□ □□□□.



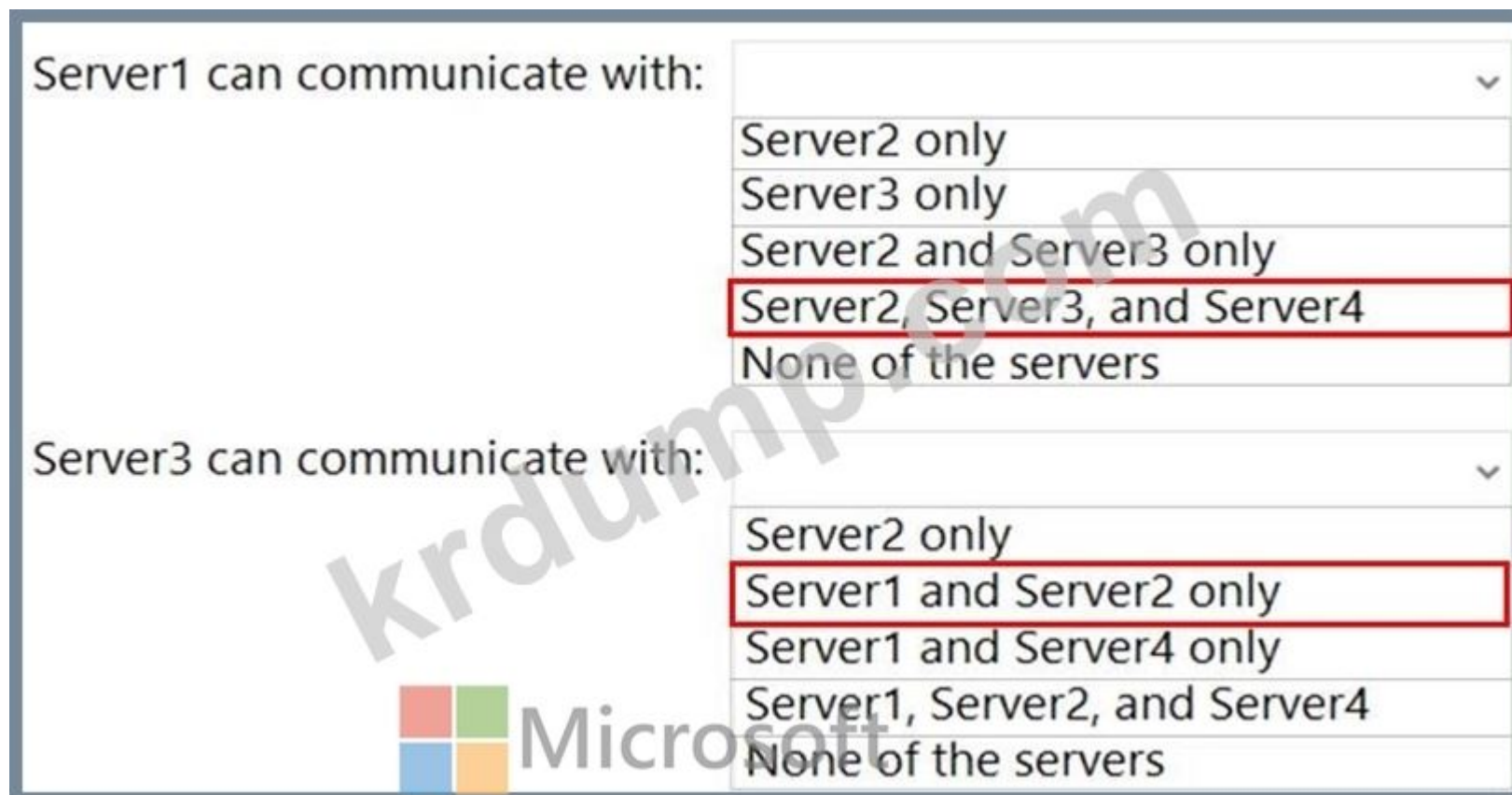
Server1 can communicate with:

- Server2 only
- Server3 only
- Server2 and Server3 only
- Server2, Server3, and Server4
- None of the servers

Server3 can communicate with:

- Server2 only
- Server1 and Server2 only
- Server1 and Server4 only
- Server1, Server2, and Server4
- None of the servers

Answer:



Server1 can communicate with:

- Server2 only
- Server3 only
- Server2 and Server3 only
- Server2, Server3, and Server4
- None of the servers

Server3 can communicate with:

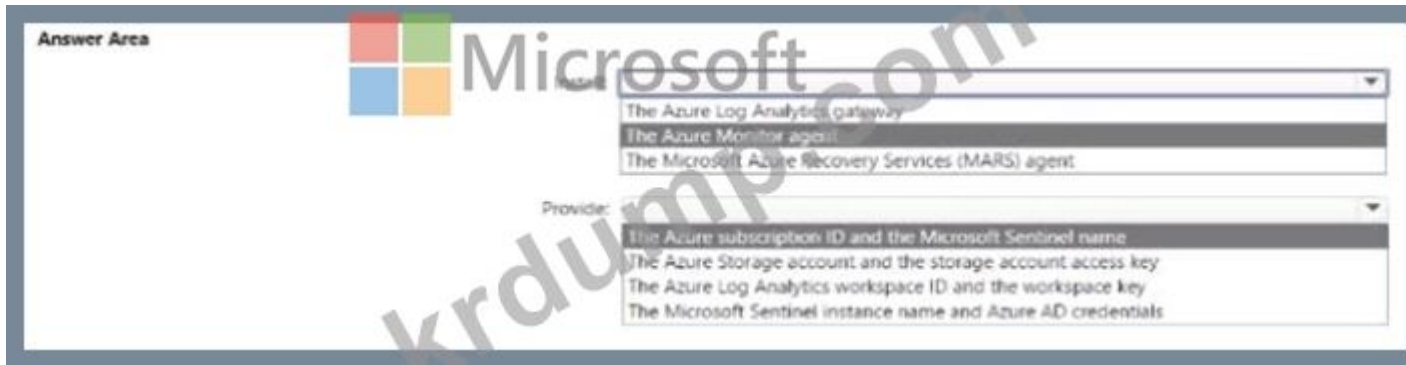
- Server2 only
- Server1 and Server2 only
- Server1 and Server4 only
- Server1, Server2, and Server4
- None of the servers

NEW QUESTION: 53

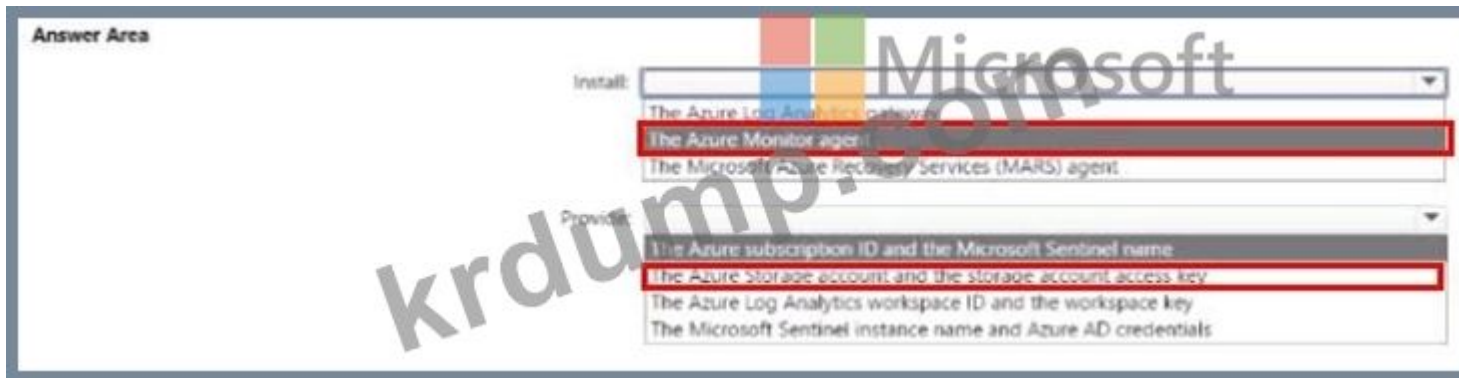
Server1□□□ □□□□□ □□□ Microsoft Sentinel □□□□□ □□□□.

Sever1□□ Windows Defender □□□ □□□□ □□□□ Microsoft Sentinel□ □□□□ □□□ □□□□ □□□ □□□□□.

Server1: Which of the following is a valid provider for the Azure Monitor agent?
 A: The Azure Monitor agent
 B: The Azure Log Analytics gateway
 C: The Microsoft Azure Recovery Services (MARS) agent
 D: The Azure Storage account and the storage account access key



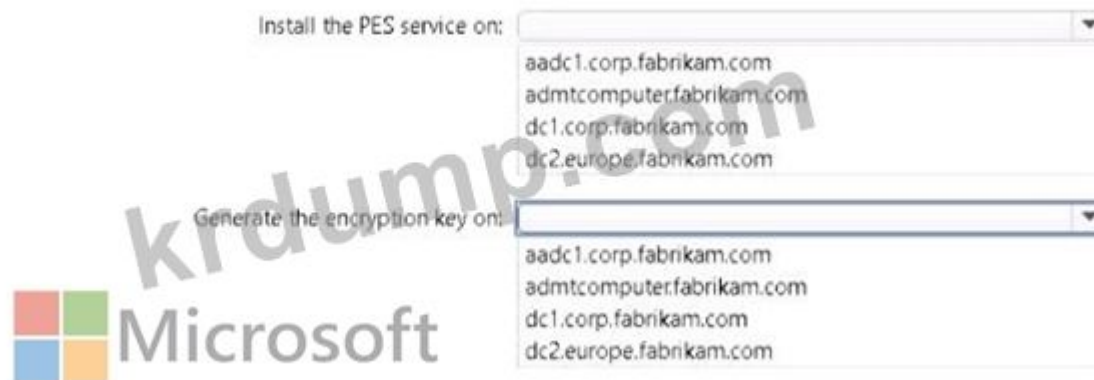
Answer:



NEW QUESTION: 54

Server1: Which of the following is a valid provider for the Azure Monitor agent?
 A: The Azure Monitor agent
 B: The Azure Log Analytics gateway
 C: The Microsoft Azure Recovery Services (MARS) agent
 D: The Azure Storage account and the storage account access key

Answer Area



Answer:

Answer Area



Contoso, Ltd

Contoso

Contoso

Contoso Azure AD (Azure Active Directory) contoso.com AD DS (Active Directory)

AD DS

Name	Operating system	Operation master role
DC1	Windows Server 2012 R2	RID master, schema master
DC2	Windows Server 2016	PDC emulator, infrastructure master
DC3	Windows Server 2016	Domain naming master

Contoso Azure

Windows Server 2012 R2. Windows Server 2012. Active Directory

contoso.com

Name	Organizational unit (OU)/Container	Member of
User1	OU1	Group2, Group4
User2	Users	Group2
User3	OU1	Group3, Group4
Admin1	OU1	Domain Admins

contoso.com GPO

Name	Minimum password length	Linked to
Default Domain Policy	8	contoso.com
GPO1	10	OU1

contoso.com PSO

Name	Precedence	Minimum password length	Directly applies to
PSO1	10	9	Group2
PSO2	20	11	Group4

contoso.com Windows Server 2022

Name	Description
Server1	Contains a share named Share1
Server2	None
Server3	None
Server4	Has Remote Desktop enabled

Windows

NEW QUESTION: 58

User1 □ Admin1□ □□□ □□ □□ □□□□□? □□□□□ □□ □□□□ □□□ □□□ □□□□□□.
□□: □ □□□ □□□ 1□□ □□□ □□□□.

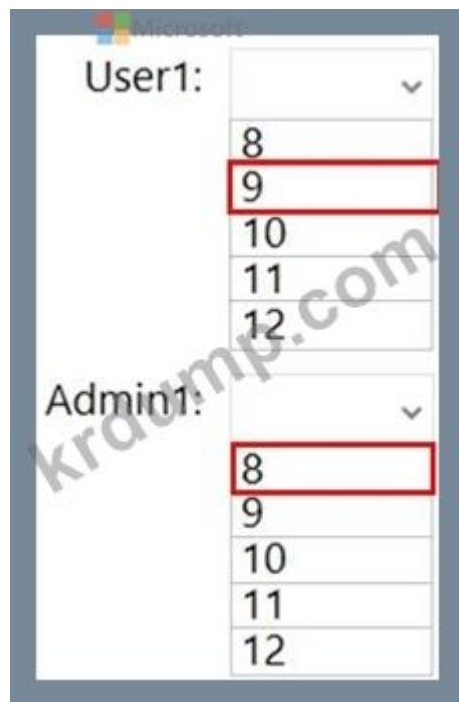
User1:

8
9
10 
11
12

Admin1:

8
9
10
11
12

Answer:



User1:

8
9
10
11
12

Admin1:

8
9
10
11
12

NEW QUESTION: 59

Server1 □ Server2□□ □ □□ □□□ □□□ FC1□□□ □□ □□ □□□□□ □□□□. FC1□ □□ □□ □□□ □□□□□ □□□□□.
□□□□ □□□ □□□□□ FC1□ □□□ □□□□□.
□□□□ □□□ □□ Azure Storage □□□ □□□□ □□□.
□□□□ □□ □□□□ □□ □□ □ □□ □□ □□□ □□□□□? □□□□□ □□ □□□□ □□□ □□□ □□□□□□□.
□□: □ □□□ □□□ 1□□ □□□ □□□□.

Storage account type:

Premium block blobs
Premium file shares
Premium page blobs
Standard



Authentication method:

Access key
Shared access signature (SAS)
System-assigned managed identity in Azure Active Directory (Azure AD)
User-assigned managed identity in Azure Active Directory (Azure AD)

Answer:

Storage account type:

Premium block blobs
Premium file shares
Premium page blobs
Standard

Authentication method:

Access key
Shared access signature (SAS)
System-assigned managed identity in Azure Active Directory (Azure AD)
User-assigned managed identity in Azure Active Directory (Azure AD)

□□:

<https://docs.microsoft.com/en-us/windows-server/failover-clustering/deploy-cloud-witness>

NEW QUESTION: 60

Server1□ Server3□ □□ □□□ □□□ □ □□□□? □□□□□ □□ □□□□ □□□ □□□ □□□□□□.
□□: □ □□□ □□□ 1□□ □□□ □□□□.

Microsoft Statements	Yes	No
On Server2, Conflict detection attempts is set to 3.	<input type="radio"/>	<input type="radio"/>
On Server2, there is a reservation for computer2.contoso.com.	<input type="radio"/>	<input type="radio"/>
On Server2, Policy1 is applied to Scope1.	<input type="radio"/>	<input type="radio"/>

Answer:

Microsoft Statements	Yes	No
On Server2, Conflict detection attempts is set to 3.	<input checked="" type="radio"/>	<input type="radio"/>
On Server2, there is a reservation for computer2.contoso.com.	<input type="radio"/>	<input checked="" type="radio"/>
On Server2, Policy1 is applied to Scope1.	<input checked="" type="radio"/>	<input type="radio"/>

□□:

<https://docs.microsoft.com/en-us/powershell/module/dhcpserver/export-dhcpserver?view=windowsserver2022-ps>

<https://docs.microsoft.com/en-us/powershell/module/dhcpserver/import-dhcpserver?view=windowsserver2022-ps>

NEW QUESTION: 63

□□ □□□ Windows Server□ □□□□ □□□ 10□ □□□□.

□□ □□ □□ □□□□ □□□□ □□□□□□ □□□ □□□□ □□□. □□□□ □□□ □ □□□□ □□□.

□□ □□ □□□□ □□ □□ □□□ □□□□ □□□?

A. NTLMv2

B. □□ □□ □

C. □□□□□V5

D. □□□ □□□

Answer: (SHOW ANSWER)

□□:

<https://docs.microsoft.com/en-us/windows/security/threat-protection/windows-firewall/create-an-authentication-r>

NEW QUESTION: 64

□□□□□□ contoso.com□□□□ AD DS(Active Directory □□□□ □□□) □□□□ □□□□ □□□□. □□□□ □ □□□□ □□ □□□

Windows Server 2012 R2□□□. □□□□□ □□ □□ □□□ □□□ □□□□□ □□□□ □□□□.

Name	Operating system	FMSO role
DC1	Windows Server 2012 R2	All
DC2	Windows Server 2022	None
DC3	Windows Server 2019	None

□□□□ □□ □□□ Windows Server 2016□□ □□□ □□□. □□□□ □□ □□ □□□ □□□□ □□□.

□□□ □□ □ □ □□ □□□ □□□□□ □□□ □□□□□.

FSMO □□□ □□□ □ □□ □□□ □□□□□□.

□□: □ □□□ □□□ 1□□ □□□ □□□□.

Answer Area

Install the PES service on:

Generate the encryption key on:

Microsoft

Answer:

Answer Area

Install the PES service on:

Generate the encryption key on:

Microsoft

NEW QUESTION: 66

□□ □□ □□□ □□□ □□□□ Cluster1□□□ □□ □□ □□□□ □□□□.

Name	Server role
Node1	File Server
Node2	File Server
Node3	File Server

HAFS□□ □□ □□ □□□□ □□□ □□ □□ □□□ □□ □□ □□□□(□□ □ □□).

Answer Area

If you select **Move**, and then **Best Possible Node**, HAFS will move to Node3.

If you stop and start Cluster1, HAFS will come online on Node1.

If you select **Move, Select Node**, and then **Node2**, HAFS will move to Node2.

Microsoft

Answer:



NEW QUESTION: 69

Windows Server VM1 Azure. VM1 .

VM1 .

Azure VM1 PowerShell cmdlet .

.

Actions	Answer Area
From the Azure portal, configure the Boot diagnostics settings for VM1 to use a custom storage account.	
From the Azure portal, open the Run command blade.	
From the Azure portal, open the Serial console blade of VM1.	
From the Azure portal, enable just in time (JIT) VM access to VM1.	
From the Serial console, run <code>ch -si 1</code> and sign in by using a local account.	
From the Serial console, run <code>cmd.</code>	

Answer:

.

From the Azure portal, configure the Boot diagnostics settings for VM1 to use a custom storage account.
From the Azure portal, open the Serial console blade of VM1.
From the Serial console, run <code>cmd.</code>
From the Serial console, run <code>ch -si 1</code> and sign in by using a local account.

.:

<https://docs.microsoft.com/en-us/troubleshoot/azure/virtual-machines/serial-console-overview>

<https://docs.microsoft.com/en-us/troubleshoot/azure/virtual-machines/serial-console-windows>

NEW QUESTION: 70

Which of the following are supported by Windows Defender Application Control?
A. Microsoft Defender Application Control
B. Microsoft Defender Application Guard
C. Microsoft Defender Credential Guard
D. Microsoft Defender for Endpoint
E. Configuration profiles in Microsoft Intune
F. Compliance policies in Microsoft Intune
G. Group Policy Objects (GPOs)



Answer:



Which of the following are supported by Windows Defender Application Control?
<https://docs.microsoft.com/en-us/windows/security/threat-protection/windows-defender-application-control/wdac-and-applocker-overview>

NEW QUESTION: 71

Which of the following are supported by Windows Defender Application Control?
A. 2
B. 3
C. 4
D. 5
E. 6
F. 7
G. 8
H. 9
I. 10
J. 11
K. 12
L. 13
M. 14
N. 15
O. 16
P. 17
Q. 18
R. 19
S. 20
T. 21
U. 22
V. 23
W. 24
X. 25
Y. 26
Z. 27
AA. 28
AB. 29
AC. 30
AD. 31
AE. 32
AF. 33
AG. 34
AH. 35
AI. 36
AJ. 37
AK. 38
AL. 39
AM. 40
AN. 41
AO. 42
AP. 43
AQ. 44
AR. 45
AS. 46
AT. 47
AU. 48
AV. 49
AW. 50
AX. 51
AY. 52
AZ. 53
BA. 54
BB. 55
BC. 56
BD. 57
BE. 58
BF. 59
BG. 60
BH. 61
BI. 62
BJ. 63
BK. 64
BL. 65
BM. 66
BN. 67
BO. 68
BP. 69
BQ. 70
BR. 71
BS. 72
BT. 73
BU. 74
BV. 75
BW. 76
BX. 77
BY. 78
BZ. 79
CA. 80
CB. 81
CC. 82
CD. 83
CE. 84
CF. 85
CG. 86
CH. 87
CI. 88
CJ. 89
CK. 90
CL. 91
CM. 92
CN. 93
CO. 94
CP. 95
CQ. 96
CR. 97
CS. 98
CT. 99
CU. 100
CV. 101
CW. 102
CX. 103
CY. 104
CZ. 105
DA. 106
DB. 107
DC. 108
DD. 109
DE. 110
DF. 111
DG. 112
DH. 113
DI. 114
DJ. 115
DK. 116
DL. 117
DM. 118
DN. 119
DO. 120
DP. 121
DQ. 122
DR. 123
DS. 124
DT. 125
DU. 126
DV. 127
DW. 128
DX. 129
DY. 130
DZ. 131
EA. 132
EB. 133
EC. 134
ED. 135
EE. 136
EF. 137
EG. 138
EH. 139
EI. 140
EJ. 141
EK. 142
EL. 143
EM. 144
EN. 145
EO. 146
EP. 147
EQ. 148
ER. 149
ES. 150
ET. 151
EU. 152
EV. 153
EW. 154
EX. 155
EY. 156
EZ. 157
FA. 158
FB. 159
FC. 160
FD. 161
FE. 162
FF. 163
FG. 164
FH. 165
FI. 166
FJ. 167
FK. 168
FL. 169
FM. 170
FN. 171
FO. 172
FP. 173
FQ. 174
FR. 175
FS. 176
FT. 177
FU. 178
FV. 179
FW. 180
FX. 181
FY. 182
FZ. 183
GA. 184
GB. 185
GC. 186
GD. 187
GE. 188
GF. 189
GG. 190
GH. 191
GI. 192
GJ. 193
GK. 194
GL. 195
GM. 196
GN. 197
GO. 198
GP. 199
GQ. 200
GR. 201
GS. 202
GT. 203
GU. 204
GV. 205
GW. 206
GX. 207
GY. 208
GZ. 209
HA. 210
HB. 211
HC. 212
HD. 213
HE. 214
HF. 215
HG. 216
HH. 217
HI. 218
HJ. 219
HK. 220
HL. 221
HM. 222
HN. 223
HO. 224
HP. 225
HQ. 226
HR. 227
HS. 228
HT. 229
HU. 230
HV. 231
HW. 232
HX. 233
HY. 234
HZ. 235
IA. 236
IB. 237
IC. 238
ID. 239
IE. 240
IF. 241
IG. 242
IH. 243
II. 244
IJ. 245
IK. 246
IL. 247
IM. 248
IN. 249
IO. 250
IP. 251
IQ. 252
IR. 253
IS. 254
IT. 255
IU. 256
IV. 257
IW. 258
IX. 259
IY. 260
IZ. 261
JA. 262
JB. 263
JC. 264
JD. 265
JE. 266
JF. 267
JG. 268
JH. 269
JI. 270
JJ. 271
JK. 272
JL. 273
JM. 274
JN. 275
JO. 276
JP. 277
JQ. 278
JR. 279
JS. 280
JT. 281
JU. 282
JV. 283
JW. 284
JX. 285
JY. 286
JZ. 287
KA. 288
KB. 289
KC. 290
KD. 291
KE. 292
KF. 293
KG. 294
KH. 295
KI. 296
KJ. 297
KK. 298
KL. 299
KM. 300
KN. 301
KO. 302
KP. 303
KQ. 304
KR. 305
KS. 306
KT. 307
KU. 308
KV. 309
KW. 310
KX. 311
KY. 312
KZ. 313
LA. 314
LB. 315
LC. 316
LD. 317
LE. 318
LF. 319
LG. 320
LH. 321
LI. 322
LJ. 323
LK. 324
LL. 325
LM. 326
LN. 327
LO. 328
LP. 329
LQ. 330
LR. 331
LS. 332
LT. 333
LU. 334
LV. 335
LW. 336
LX. 337
LY. 338
LZ. 339
MA. 340
MB. 341
MC. 342
MD. 343
ME. 344
MF. 345
MG. 346
MH. 347
MI. 348
MJ. 349
MK. 350
ML. 351
MM. 352
MN. 353
MO. 354
MP. 355
MQ. 356
MR. 357
MS. 358
MT. 359
MU. 360
MV. 361
MW. 362
MX. 363
MY. 364
MZ. 365
NA. 366
NB. 367
NC. 368
ND. 369
NE. 370
NF. 371
NG. 372
NH. 373
NI. 374
NJ. 375
NK. 376
NL. 377
NM. 378
NN. 379
NO. 380
NP. 381
NQ. 382
NR. 383
NS. 384
NT. 385
NU. 386
NV. 387
NW. 388
NX. 389
NY. 390
NZ. 391
OA. 392
OB. 393
OC. 394
OD. 395
OE. 396
OF. 397
OG. 398
OH. 399
OI. 400
OJ. 401
OK. 402
OL. 403
OM. 404
ON. 405
OO. 406
OP. 407
OQ. 408
OR. 409
OS. 410
OT. 411
OU. 412
OV. 413
OW. 414
OX. 415
OY. 416
OZ. 417
PA. 418
PB. 419
PC. 420
PD. 421
PE. 422
PF. 423
PG. 424
PH. 425
PI. 426
PJ. 427
PK. 428
PL. 429
PM. 430
PN. 431
PO. 432
PP. 433
PQ. 434
PR. 435
PS. 436
PT. 437
PU. 438
PV. 439
PW. 440
PX. 441
PY. 442
PZ. 443
QA. 444
QB. 445
QC. 446
QD. 447
QE. 448
QF. 449
QG. 450
QH. 451
QI. 452
QJ. 453
QK. 454
QL. 455
QM. 456
QN. 457
QO. 458
QP. 459
QQ. 460
QR. 461
QS. 462
QT. 463
QU. 464
QV. 465
QW. 466
QX. 467
QY. 468
QZ. 469
RA. 470
RB. 471
RC. 472
RD. 473
RE. 474
RF. 475
RG. 476
RH. 477
RI. 478
RJ. 479
RK. 480
RL. 481
RM. 482
RN. 483
RO. 484
RP. 485
RQ. 486
RR. 487
RS. 488
RT. 489
RU. 490
RV. 491
RW. 492
RX. 493
RY. 494
RZ. 495
SA. 496
SB. 497
SC. 498
SD. 499
SE. 500
SF. 501
SG. 502
SH. 503
SI. 504
SJ. 505
SK. 506
SL. 507
SM. 508
SN. 509
SO. 510
SP. 511
SQ. 512
SR. 513
SS. 514
ST. 515
SU. 516
SV. 517
SW. 518
SX. 519
SY. 520
SZ. 521
TA. 522
TB. 523
TC. 524
TD. 525
TE. 526
TF. 527
TG. 528
TH. 529
TI. 530
TJ. 531
TK. 532
TL. 533
TM. 534
TN. 535
TO. 536
TP. 537
TQ. 538
TR. 539
TS. 540
TT. 541
TU. 542
TV. 543
TW. 544
TX. 545
TY. 546
TZ. 547
UA. 548
UB. 549
UC. 550
UD. 551
UE. 552
UF. 553
UG. 554
UH. 555
UI. 556
UJ. 557
UK. 558
UL. 559
UM. 560
UN. 561
UO. 562
UP. 563
UQ. 564
UR. 565
US. 566
UT. 567
UU. 568
UV. 569
UW. 570
UX. 571
UY. 572
UZ. 573
VA. 574
VB. 575
VC. 576
VD. 577
VE. 578
VF. 579
VG. 580
VH. 581
VI. 582
VJ. 583
VK. 584
VL. 585
VM. 586
VN. 587
VO. 588
VP. 589
VQ. 590
VR. 591
VS. 592
VT. 593
VU. 594
VV. 595
VW. 596
VX. 597
VY. 598
VZ. 599
WA. 600
WB. 601
WC. 602
WD. 603
WE. 604
WF. 605
WG. 606
WH. 607
WI. 608
WJ. 609
WK. 610
WL. 611
WM. 612
WN. 613
WO. 614
WP. 615
WQ. 616
WR. 617
WS. 618
WT. 619
WU. 620
WV. 621
WW. 622
WX. 623
WY. 624
WZ. 625
XA. 626
XB. 627
XC. 628
XD. 629
XE. 630
XF. 631
XG. 632
XH. 633
XI. 634
XJ. 635
XK. 636
XL. 637
XM. 638
XN. 639
XO. 640
XP. 641
XQ. 642
XR. 643
XS. 644
XT. 645
XU. 646
XV. 647
XW. 648
XX. 649
XY. 650
XZ. 651
YA. 652
YB. 653
YC. 654
YD. 655
YE. 656
YF. 657
YG. 658
YH. 659
YI. 660
YJ. 661
YK. 662
YL. 663
YM. 664
YN. 665
YO. 666
YP. 667
YQ. 668
YR. 669
YS. 670
YT. 671
YU. 672
YV. 673
YW. 674
YX. 675
YZ. 676
ZA. 677
ZB. 678
ZC. 679
ZD. 680
ZE. 681
ZF. 682
ZG. 683
ZH. 684
ZI. 685
ZJ. 686
ZK. 687
ZL. 688
ZM. 689
ZN. 690
ZO. 691
ZP. 692
ZQ. 693
ZR. 694
ZS. 695
ZT. 696
ZU. 697
ZV. 698
ZW. 699
ZX. 700
ZY. 701
ZZ. 702

A. 2

- B. 3
- C. 4
- D. 5

Answer: B (LEAVE A REPLY)

□□□□□ □ □□ □□□ □□ □□□ IP□ □□□□ □□ IP(VIP)□ □□ □□□ IP.

NEW QUESTION: 72

□□□□□□ Active Directory □□□□ □□□□ AD DS(Active Directory □□□ □□□) □□□□ □□□□ □□□□. □□ □□□ □□□□ □ □□ □□□□□.

□□□ □□□ □□□□ □□ □□□□ □□□□□□.

□□□ □□□ □□□ □□□ □□□ □□□□ □□□.

□□□ □□□□□□ □□□□ □□□□ □□ □ □□ □□□ □□□□□? □□□□□ □□ □□□□ □□ □□□ □□ □□□□ □□□□ □ □□□□ □□□□□□.

Action	Answer Area
Mount Active Directory to port 51389.	
View the membership of the group.	
Restore the system state to an alternate location.	
From the Deleted Objects container in Active Directory Administrative Center, run the Restore task.	
From Active Directory Users and Computers, change the domain controller to localhost:51389.	
Restore the group from the Active Directory Recycle Bin.	

Answer:

Action	Answer Area
Mount Active Directory to port 51389.	Restore the system state to an alternate location.
View the membership of the group.	Mount Active Directory to port 51389.
Restore the system state to an alternate location.	From Active Directory Users and Computers, change the domain controller to localhost:51389.
From the Deleted Objects container in Active Directory Administrative Center, run the Restore task.	View the membership of the group.
From Active Directory Users and Computers, change the domain controller to localhost:51389.	
Restore the group from the Active Directory Recycle Bin.	

□□:

<http://sysadmindoc.blogspot.com/2018/10/mount-active-directory-database-from.html>

NEW QUESTION: 73

□□ □□ □□ Windows Server□ □□□□ □ □□ □□□ □□□□.

Name	Location	Domain/workgroup
Server1	On-premises	Domain
Server2	Azure virtual machine	Workgroup

Server1 Server2 E AD DS(Active Directory)

*

*

.?

A.

B.

C. Azure

D. Azure

Answer: A (LEAVE A REPLY)

NEW QUESTION: 74

contos.com AD DS(Active Directory)

Name	Account type	In organizational unit (OU)
Admin1	User	OU1
Admin2	User	OU2
Server1	Computer	OU3
Server2	Computer	OU4

Active Directory BitLocker

* Admin1 Server1 C BitLocker (BitLocker)

* Admin1 Server1 OU1

* Admin2 Server2 E BitLocker

* Admin2 E Server2 Server1

Active Directory BitLocker?

:



Answer:



NEW QUESTION: 75

Node 1, Node2 Windows Server Cluster1

Storage Spaces Direct Cluster1

.

* 3 512-6B NVMe

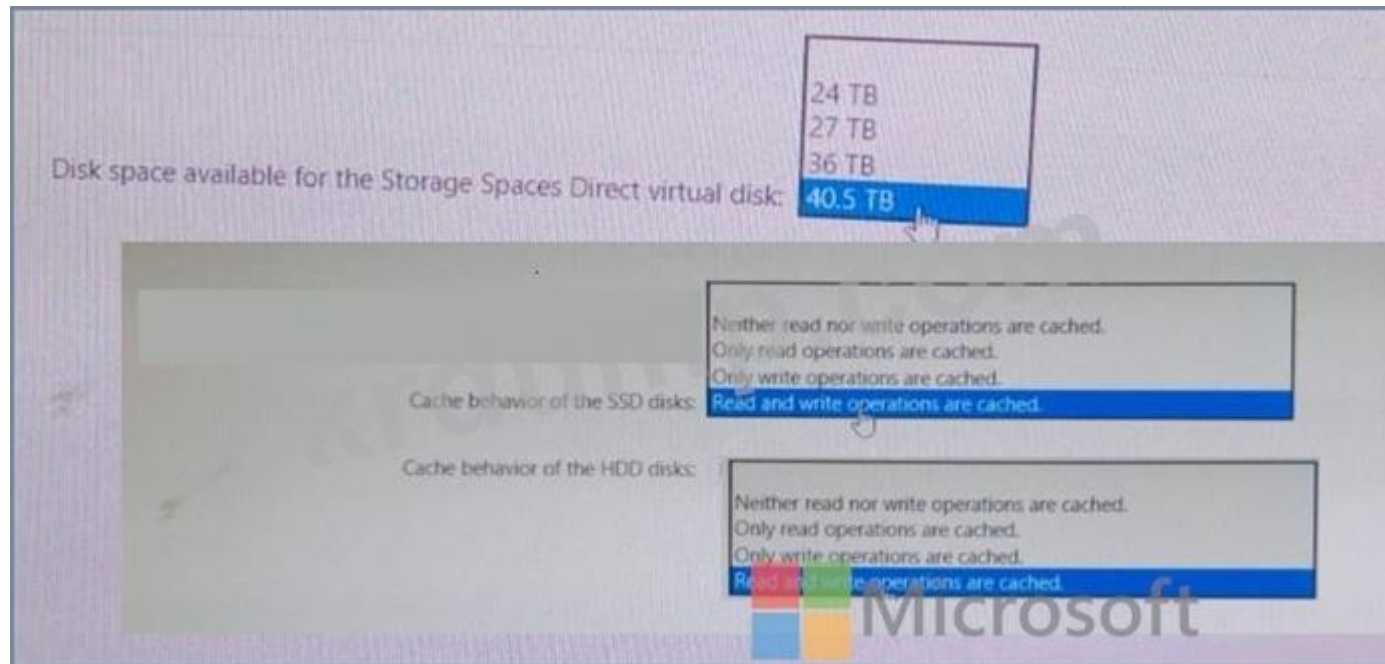
* 3TB

* 1TB SSD

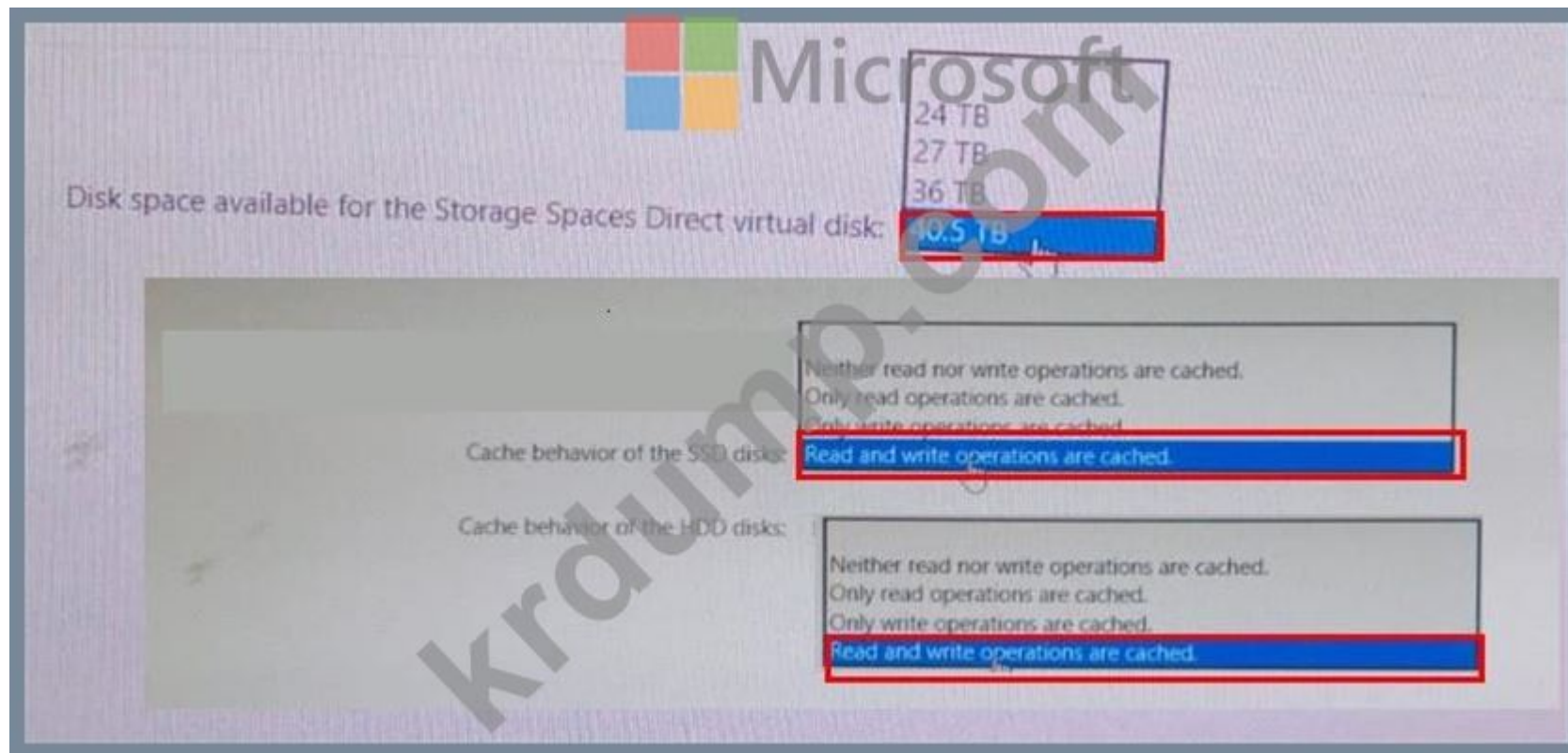
Cluster1.

. SSD . HDD ? .

.



Answer:



NEW QUESTION: 76

. AD DS(Active Directory)

Name	Operating system	Server role
Server1	Windows Server 2019	DHCP Server
Server2	Windows Server 2022	DHCP Server
Server3	Windows Server 2019	File Server

Server3 □□ Share1 □□□ □□□ □□□□ □□□□.

Server1 □□ DHCP □ □□□ □□□ □□□□.

□□ □□ □□: 3

□□ □□□ □□ Scope1 □□□ IPv4 □□:

1. □□ □: 172.16.10.100 - 172.16.10.130

2. □□ □□:

- 172.16.10.100 computer1.contoso.com

- 172.16.10.101 computer2.contoso.com

□□: 172.16.10.101 computer2.contoso.com

□□: □□1

□□ □□□ □□□□□.

* Server1 □□ □□□ □□□□□.

□□□□-DhcpServer -□□ \\Server3\Share1\File1.xml.

* Server2 □□□ □□□ □□□□□.

□□□□-DhcpServer -□□ \\Server3\Share1\File1.xml

-BackupPath \\Server3\Share1.

□□ □ □□□ □□ □□□ □□□ □□ □□□□□□. □□□ □□□ □□□□ □□□□□.

□□: □ □□□ □□□ 1□□ □□□ □□□□.

Statements	Yes	No
On Server2, Conflict detection attempts is set to 3.	<input type="radio"/>	<input type="radio"/>
On Server2, there is a reservation for computer2.contoso.com.	<input type="radio"/>	<input type="radio"/>
On Server2, Policy1 is applied to Scope1.	<input type="radio"/>	<input type="radio"/>

Answer:

□□

□□□□ □□□ □□□ □□

Statements	Yes	No
On Server2, Conflict detection attempts is set to 3.	<input checked="" type="radio"/>	<input type="radio"/>
On Server2, there is a reservation for computer2.contoso.com.	<input type="radio"/>	<input checked="" type="radio"/>
On Server2, Policy1 is applied to Scope1.	<input checked="" type="radio"/>	<input type="radio"/>

□□:

<https://docs.microsoft.com/en-us/powershell/module/dhcpserver/export-dhcpserver?view=windowsserver2022-p>

<https://docs.microsoft.com/en-us/powershell/module/dhcpserver/import-dhcpserver?view=windowsserver2022-p>

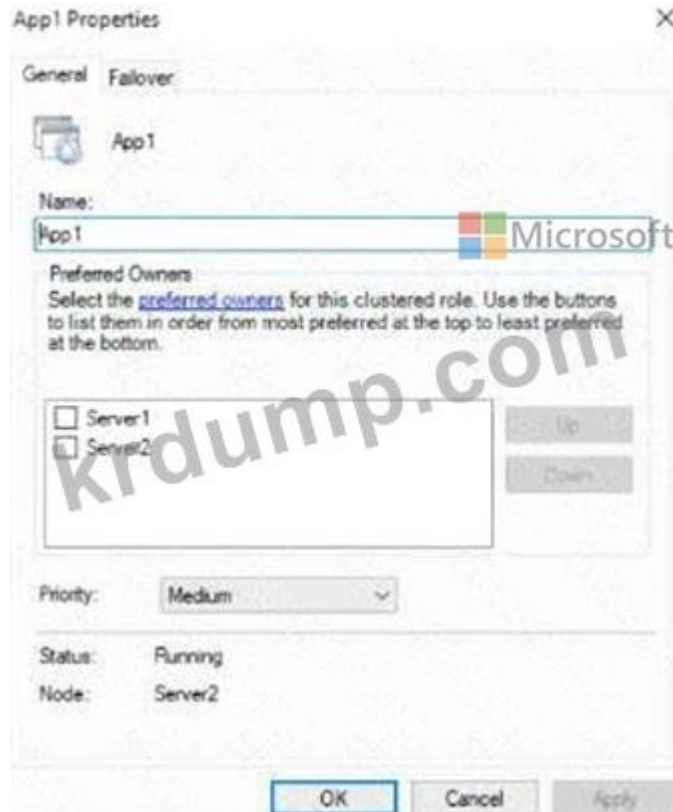
NEW QUESTION: 78

□□: □ □□□ □□□ □□□□□ □□□□ □□□ □□ □ □□□□□. □□□□ □ □□□□ □□□ □□□ □□□ □ □□ □□□ □□□ □ □□□□ □□□□. □□ □□ □□□□ □□ □□□ □□□ □□□□ □□ □ □□□ □□ □□ □□□□ □□□ □□□□ □□ □ □□□ □.

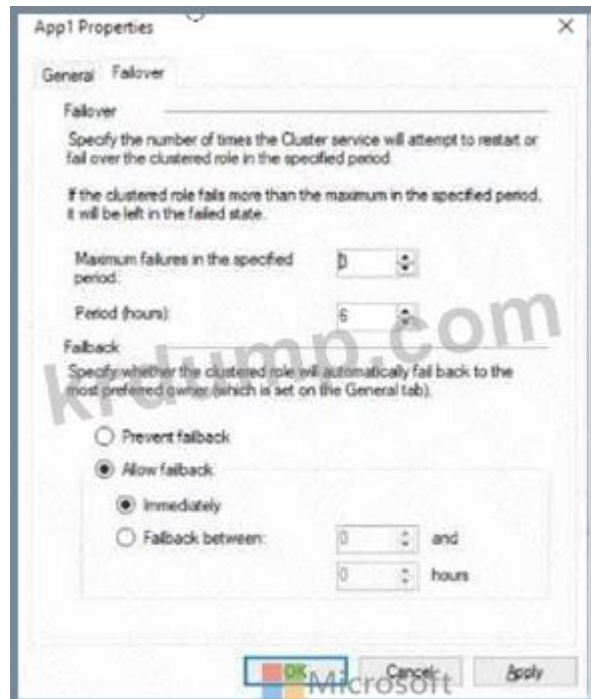
□ □□□ □□□ □□ □□□ □□ □□□□ □□□ □ □□□□. □□□□□ □□□ □□□ □□ □□□ □□□□ □□□□.

App1□□□ □□ □□□□□ □□□□□ Cluster1□□□ □□ □□ □□□□□ □□□□.

App1 □□□ □□ □□ □□ □□ □□□□□. (□□ □□ □□□□□.)



App1 □□□ □□ □□ □□ □□ □□ □□□ □□□□□. (□□ □□ □□ □□□□□.)



Server1□ □□□ □□ □□□□□.

VM1 on Host1:

- Failover only
- Test Failover only
- Planned Failover only
- Failover and Planned Failover only
- Test Failover and Failover only

VM1 on Host2:

- Failover only
- Test Failover only
- Planned Failover only
- Failover and Planned Failover only
- Test Failover and Failover only

Answer:

VM1 on Host1:

- Failover only
- Test Failover only
- Planned Failover only
- Failover and Planned Failover only
- Test Failover and Failover only

VM1 on Host2:

- Failover only
- Test Failover only
- Planned Failover only
- Failover and Planned Failover only
- Test Failover and Failover only

NEW QUESTION: 83

Windows Server 2016 VM1 on Azure. VM1 is running Windows Server 2016. VM1 is running Windows Server 2016.

VM1 is running Windows Server 2016.

Azure PowerShell cmdlet to run on VM1.

Answer:
Answer Area

If you select **Move**, and then **Best Possible Node**, HAFS will move to Node3.

If you stop and start Cluster1, HAFS will come online on Node1.

If you select **Move, Select Node**, and then **Node2**, HAFS will move to Node2.

NEW QUESTION: 85

AD DS(Active Directory) is installed on Server3. A DHCP scope is configured on Server3. The scope is named Scope1 and is configured with the following settings:

Name	Operating system	Server role
Server1	Windows Server 2019	DHCP Server
Server2	Windows Server 2022	DHCP Server
Server3	Windows Server 2019	File Server

Server3 has a share named Share1. The share is configured with the following settings:

Server1 is configured with the following settings:

Conflict detection attempts is set to 3.

Scope1 is configured with the following settings:

1. IP address range: 172.16.10.100 - 172.16.10.130

2. Excluded IP addresses:

- 172.16.10.100 computer1.contoso.com

- 172.16.10.101 computer2.contoso.com

3. Lease duration: 172.16.10.101 computer2.contoso.com

4. Lease expiration: 1

5. Conflict detection attempts: 3

Server1 is configured with the following settings:

Policy1 is applied to Scope1. The policy is configured with the following settings:

Server2 is configured with the following settings:

Policy1 is applied to Scope1. The policy is configured with the following settings:

-BackupPath \\Server3\Share1.

Server2 is configured with the following settings:

Conflict detection attempts is set to 1.

Statements	Yes	No
On Server2, Conflict detection attempts is set to 3.	<input type="radio"/>	<input type="radio"/>
On Server2, there is a reservation for computer2.contoso.com.	<input type="radio"/>	<input type="radio"/>
On Server2, Policy1 is applied to Scope1.	<input type="radio"/>	<input type="radio"/>

Answer:

Statements	Yes	No
On Server2, Conflict detection attempts is set to 3.	<input checked="" type="radio"/>	<input type="radio"/>
On Server2, there is a reservation for computer2.contoso.com.	<input type="radio"/>	<input checked="" type="radio"/>
On Server2, Policy1 is applied to Scope1.	<input checked="" type="radio"/>	<input type="radio"/>

□□:

<https://docs.microsoft.com/en-us/powershell/module/dhcpserver/export-dhcpserver?view=windowsserver2022-ps>

<https://docs.microsoft.com/en-us/powershell/module/dhcpserver/import-dhcpserver?view=windowsserver2022-ps>

NEW QUESTION: 86

□□□□□□ contoso.com□□□ □□ □□□ AD DS(Active Directory □□□ □□□) □□□□□ □□□□ □□□□. □□□□□ □□ □□

□ Windows Server 2012 R2□□□. □□ □□□ □□□□□ Windows Server 2012 R2□ □□□□□.

Sysvol□ FRS(□□ □□ □□□)□ □□□□ □□□□□.

□□ □□□ □□□□□ Windows Server 2022□ □□□ □ □□□ □□□□□ □□□ □□□□□.

Windows Server 2022□ □□□□ □ □□ □□□ □□□□□ □□□ □ □□□ □□□□ □□□.

□□□; □□□ □ □□□□ □□ □□□ □□□□.

□□□ □□□ □□□□□?

A. □

B. □□□

Answer: B (LEAVE A REPLY)

NEW QUESTION: 87

Azure □□□□□□ □□□ □□□□ □□ APP3 □ APP4□ □□□□□□□ □□□□ □□□□.

□□□□□□□ □□□□ □□ Cluster1□ Azure□□ □□□ □□ □□□? □□□□□ □□ □□□□ □□□ □□□ □□□□□□.

□□: □ □□□ □□□ 1□□ □□□ □□□□.

On Cluster1:	Microsoft
	Configure Azure Network Adapter.
	Create a Point-to-Site (P2S) VPN connection to Vnet1.
	Import the Azure Migrate appliance.
	Install the Azure File Sync agent.
	Install the Windows Server Migration Tools.
In Azure:	
	Create a premium block blobs Azure Storage account.
	Create a private endpoint.
	Create a VPN gateway.
	Create an Azure Migrate project.

Answer:

□□

□□□ □□□ □□□□□, □□□, □□□□□□ □□ □□ □□

Actions	Answer Area
From the Azure portal, configure the Boot diagnostics settings for VM1 to use a custom storage account.	From the Azure portal, configure the Boot diagnostics settings for VM1 to use a custom storage account.
From the Azure portal, open the Run command blade.	From the Azure portal, open the Serial console blade of VM1.
From the Azure portal, open the Serial console blade of VM1.	From the Serial console, run <code>cmd</code> .
From the Azure portal, enable just in time (JIT) VM access to VM1.	From the Serial console, run <code>ch -si 1</code> and sign in by using a local account.
From the Serial console, run <code>ch -si 1</code> and sign in by using a local account.	
From the Serial console, run <code>cmd</code> .	

□□:

<https://docs.microsoft.com/en-us/troubleshoot/azure/virtual-machines/serial-console-overview>

<https://docs.microsoft.com/en-us/troubleshoot/azure/virtual-machines/serial-console-windows>

NEW QUESTION: 89

Azure Active Directory(Azure AD) □□□□ □□□□□ □□□□□ AD DS(Active Directory Domain Services) □□□□ □□□□.

AD DS □□□□□ DC1□□□□ □□□□ □□□□ □□□□ □□□□. DC1□ □□□□ □□□□ □ □□□□.

□□□□□ □□□□ □□ □□ □□□ □□□□ □□□□ □□□□ □□□□ □□□□ □□□□ □□□□.

□□□□ □□□□ □□□ □□□ □□□□ □□□□ □□□□ □□□□.

□□□□ □□□□□ □□ □□□ □□□□ □□□□ □□□□ □□□□.

□□□□ □□□□□? □□□□□ □□□□ □□□ □□□ □□□□ □□□□□□□□□□. □ □□□ □ □, □ □ □□ □□□□□□ □□ □□□□ □ □□□□ □ □□□□□.

□ □ □□□□. □□□□ □□□ □ □□□ □□ □□□ □□□ □□□□□ □ □ □□□□□.

□□: □ □□□ □□□ □□□ □□□□ □□□□□.

Configurations	Answer Area
Configure Azure AD Identity Protection.	On DC1: Configuration
Configure Azure AD Password Protection.	On a member server: Configuration
Install the Azure AD Pass-through Authentication Agent.	In Azure: Configuration
Install the Azure AD Password Protection DC agent.	
Install the Azure AD Password Protection proxy service.	

Answer:

Configurations	Answer Area
Configure Azure AD Identity Protection.	
Configure Azure AD Password Protection.	
Install the Azure AD Pass-through Authentication Agent.	
Install the Azure AD Password Protection DC agent.	On DC1: Install the Azure AD Password Protection DC agent.
Install the Azure AD Password Protection proxy service.	On a member server: Install the Azure AD Password Protection proxy service.
	In Azure: Configure Azure AD Password Protection.

□□:

<https://docs.microsoft.com/en-us/azure/active-directory/authentication/howto-password-ban-bad-on-premises-deploy>

Answer:

Actions	Answer Area
On Server1, install and register the Azure Connected Machine agent.	Download the Vault Credentials file.
Schedule a backup.	Install and register the Microsoft Azure Recovery Services (MARS) agent.
On Server1, install and register the Azure Site Recovery Mobility service agent.	Schedule a backup.
Download the Vault Credentials file.	
Install and register the Microsoft Azure Recovery Services (MARS) agent.	
Create a recovery plan.	

□□:

<https://docs.microsoft.com/en-us/azure/backup/tutorial-backup-windows-server-to-azure>

NEW QUESTION: 93

□□□□ □□□ □□□□ Cluster1□□□ Hyper-V □□ □□ □□□□□ □□□□. Cluster1□ Windows Server□ □□□□ VM1□□□□ □□ □□□□□□.

VM1□□ Service1□□□□ □□□□ □□□□ □□□□ VM1□ □□ □□□ □□ □□□□ □□□.

Cluster1□ VM1□□ □□□ □□ □□□? □□□□□ □□ □□□□ □□□ □□□□□□□□.

□□: □ □□□ □□□ 1□□ □□□ □□□□.

Cluster1:	Microsoft
	Modify the settings of the VM1 cluster role.
	Configure monitoring of the VM1 cluster role.
	Change the startup priority of the VM1 cluster role.

VM1:	
	Configure the Startup Type of Service1.
	Configure the Recovery settings of Service1.
	Configure the Startup and Recovery settings.
	Install and configure the Azure Monitor agent.

Answer:

□□

□□□, □□□ □□ □□ □□

Cluster1:

- Modify the settings of the VM1 cluster role.
- Configure monitoring of the VM1 cluster role.
- Change the startup priority of the VM1 cluster role.

VM1:

- Configure the Startup Type of Service1.
- Configure the Recovery settings of Service1.
- Configure the Startup and Recovery settings.
- Install and configure the Azure Monitor agent.

NEW QUESTION: 94

Cluster3 is a Hyper-V cluster with three nodes. The nodes are named Node1, Node2, and Node3. The nodes are configured with the following settings:

Cluster3 is configured with the following settings:

- A. 2
- B. 3
- C. 4
- D. 5

Answer: (SHOW ANSWER)

Cluster3 is configured with the following settings:

NEW QUESTION: 95

Cluster3 is a Hyper-V cluster with three nodes. The nodes are named Node1, Node2, and Node3. The nodes are configured with the following settings:

Cluster3 is configured with the following settings:



Statements

User1 can sign in to Server4 by using Remote Desktop.

Yes

No

User2 can sign in to Server4 by using Remote Desktop.

User3 can sign in to Server4 by using Remote Desktop.

Answer:

□□□□ □□□ □□□ □□

Statements	Yes	No
User1 can sign in to Server4 by using Remote Desktop.	<input type="radio"/>	<input checked="" type="radio"/>
User2 can sign in to Server4 by using Remote Desktop.	<input checked="" type="radio"/>	<input type="radio"/>
User3 can sign in to Server4 by using Remote Desktop.	<input type="radio"/>	<input checked="" type="radio"/>

NEW QUESTION: 96

Windows Server□ □□□□ □□□ □□□□.

□□ □□□□□ □□□□ □ □ Azure Recovery Services □□ □□ □□□ □□□ □□□□□□.

□□ □□□ □□□□ □□□ □□ □□ □□□ □□□□ □□□.

□□ □□□ □□□ □□□□ □□□? □□□□□ □□ □□□□ □□ □□□ □□□□ □□□□ □□□ □□□ □□□□□□.

Actions	Answer Area
Run the Register Server Wizard.	
From Microsoft Azure Backup, run the Schedule Backup Wizard.	
From Microsoft Azure Backup, run the Back Up Now Wizard.	
Download the Microsoft Azure Recovery Services (MARS) agent and the Vault Credentials file.	
Run the Microsoft Azure Recovery Services Agent Setup Wizard.	

Answer:

Actions	Answer Area
Run the Register Server Wizard.	Download the Microsoft Azure Recovery Services (MARS) agent and the Vault Credentials file.
From Microsoft Azure Backup, run the Schedule Backup Wizard.	Run the Microsoft Azure Recovery Services Agent Setup Wizard.
From Microsoft Azure Backup, run the Back Up Now Wizard.	Run the Register Server Wizard.
Download the Microsoft Azure Recovery Services (MARS) agent and the Vault Credentials file.	From Microsoft Azure Backup, run the Schedule Backup Wizard.
Run the Microsoft Azure Recovery Services Agent Setup Wizard.	From Microsoft Azure Backup, run the Back Up Now Wizard.

□□:

<https://docs.microsoft.com/en-us/azure/backup/install-mars-agent#download-the-mars-agent>

<https://docs.microsoft.com/en-us/azure/backup/backup-windows-with-mars-agent>

NEW QUESTION: 97

□□□□ □□□ □□□□ Cluster1□□□ Hyper-V □□ □□ □□□□□ □□□□. Cluster1□ Windows Server□ □□□□ VM1□□□□ □□

□□□ □□□□□□.

Windows 10: 10

Microsoft Defender 10000 10: 10

Azure Migrate 10000 Server1 10000000 1000 10000 1000.

10 10: Server1 10 Windows 10000 10000000.

1000 1000 100000?

A. 10

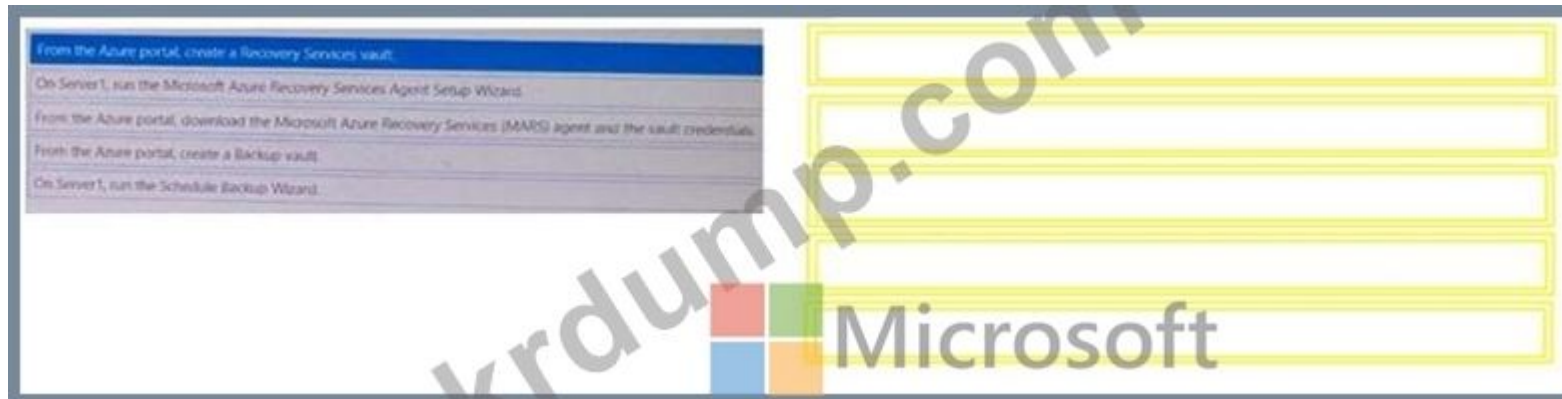
B. 1000

Answer: B (LEAVE A REPLY)

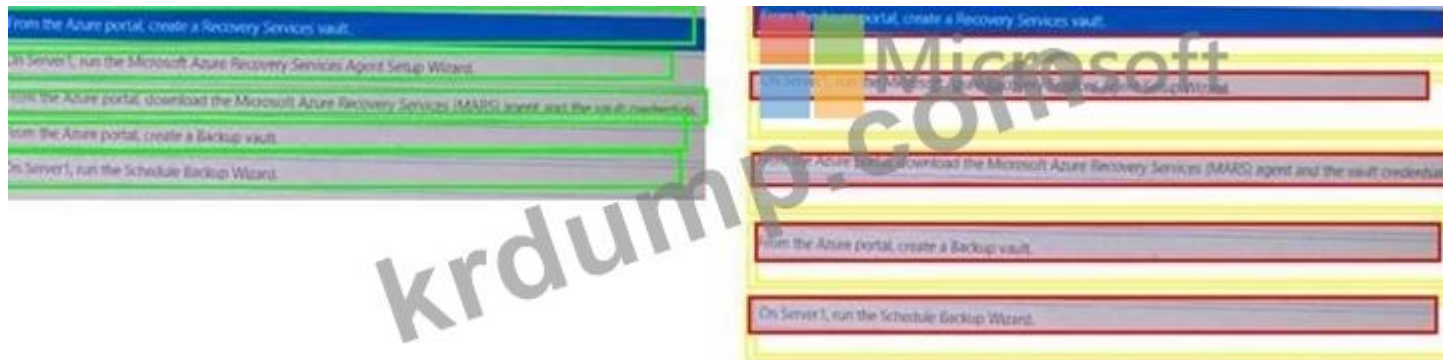
NEW QUESTION: 99

Windows Server 10000 Server1 1000 100000 1000 10000. Azure Backup 10000 10 100 1000 1000 1000 1000 1000.

10 500 1000 10000 10000 1000? 100000 10 10000 10 1000 10000 10000 1000 1000 1000000.



Answer:



NEW QUESTION: 100

Azure 1000000 1000 10000 10 APP3 10 APP4 10000000 10000 10000.

10000000 10000 10 Cluster1 10 Azure 1000 1000 1000? 100000 10 10000 1000 1000 10000000.

100: 10 1000 1000 1000 1000000.

On Cluster1:

- Configure Azure Network Adapter.
- Create a Point-to-Site (P2S) VPN connection to Vnet1.
- Import the Azure Migrate appliance.
- Install the Azure File Sync agent.
- Install the Windows Server Migration Tools.

In Azure:

- Create a premium block blobs Azure Storage account.
- Create a private endpoint.
- Create a VPN gateway.
- Create an Azure Migrate project.

Answer:

On Cluster1:

- Configure Azure Network Adapter.
- Create a Point-to-Site (P2S) VPN connection to Vnet1.
- Import the Azure Migrate appliance.
- Install the Azure File Sync agent.
- Install the Windows Server Migration Tools.

In Azure:

- Create a premium block blobs Azure Storage account.
- Create a private endpoint.
- Create a VPN gateway.
- Create an Azure Migrate project.

□□:

<https://docs.microsoft.com/en-us/azure/migrate/tutorial-discover-hyper-v>

AZ-801 □□ □□□ □□□□□ □□ DumpTop □□ □□□□ □□□ AZ-801 □□! DumpTop □ □□ **AZ-801** □□ □□□ □□□□□□, DumpTop AZ-801 □□ □□□ □□□□□□□□ □□□ □□□□□□□□. □□□□ □□□ □□□□ □□ DumpTop AZ-801 □□□ □□ □□□. <https://www.dumptop.com/Microsoft/AZ-801-dump.html> (270 Q&As Dumps, **30%OFF** Special Discount: **KrDump**)