

EMC.D-VXR-OE-23.v2024-12-08.q53

□□□□:	D-VXR-OE-23
□□□□:	Dell VxRail Operate 2023
□□□:	EMC
□□ □□ □□□:	53
□□:	v2024-12-08
# □□ □:	453
# □□ □□□:	530
https://www.krdump.com/EMC.D-VXR-OE-23.v2024-12-08.q53.html	

NEW QUESTION: 1

vSphere □□□□□□□ VxRail □□□□□ □□□ □□□?

- A. □□ > □□
- B. □□ > VxRail
- C. □□□ □ □□□□ > □□ > VxRail
- D. □□□ □ □□□□ > □□□ > VxRail

Answer: B ([LEAVE A REPLY](#))

NEW QUESTION: 2

VxRail E □□□ □□□ □□□ □□ □□ □□ □□ □□□□ □□□ □ □□ □□ □□□ □□□ □□□ □□□

- A. □□□ □□
□□□ □□
□□ LED □□□
- B. □□□ □□
□□□ □□
□□□ □□
□□□ □□
□□ LED □□□
- D. □□□ □□
□□□ LED □□□

Answer: C ([LEAVE A REPLY](#))

NEW QUESTION: 3

□□ VxRail □□ □□□□ □□□□□ □□□□ □□□□□?

- A. S □□□
- B. G □□□

C. P □□□

D. E □□□

Answer: B ([LEAVE A REPLY](#))

NEW QUESTION: 4

VxRail □□□□□ □□□ □ □□□ □□ □□□□□?

A. □□□□, NVMe, □□□□□ □□□ □□□ □□□□□ □□□ □ □□□□.

B. E □□□□ □□ □□ □□□ □□ □□□ □□□□ □□□.

C. 1GbE□ □□□□ □□□□□ NVMe□□ □□□.

D. 1GbE □□□□□ □□□□ □□□□□ □□ 10□□ □□□ □□□□□.

Answer: A ([LEAVE A REPLY](#))

NEW QUESTION: 5

vSphere Client□□ VxRail Health Monitoring□ □□□□ □□□□□ □□□?

A. □□ > □□

B. □□□□ > □□ > VxRail

C. □□ > VxRail

D. □□□□ > □□□ > VxRail

Answer: B ([LEAVE A REPLY](#))

NEW QUESTION: 6

□□□□□

VxRail □□□□ □□□ □□ □□□□ vSAN □□□□□ □□ □□□(□□□□ □□□□ □□ □
□ □□□ □□)□□□ □□□□□ □□□. □□□□□□ □□□□ □□ □□□□ □□□□□□.

vSphere Native Key Provider□ □□ □□□□□□□.

vSphere Client Administrator@VSPHERE.LOCAL

vcsa70.edu.local ACTIONS

Summary Monitor Configure Permissions Datacenters Hosts & Clusters VMs Datastores Networks

VxRail-DC

- VxRail-Cluster
- vcluster730-esx01...
- vcluster730-esx02...
- vcluster730-esx03...
- VxRail Manager

Version: 7.0.3
 Build: 18455184
 Last Updated: Aug 30, 2022, 9:08 PM
 Last File-Based Backup: Not scheduled

Clusters: 1
 Hosts: 3
 Virtual Machines: 4

Custom Attributes

Tags

Health Status

Overall Health ✔ Good

APPLIANCE MANAGEMENT

vCenter HA

vSphere Client Administrator@VSPHERE.LOCAL

VxRail-DC ACTIONS

Summary Monitor Configure Permissions Hosts & Clusters VMs Datastores Networks Updates

vcsa70.edu.local

VxRail-DC

- VxRail-Cluster
- vcluster730-esx01...
- vcluster730-esx02...
- vcluster730-esx03...
- vcluster730-esx04...
- VxRail Manager

Hosts: 3
 Virtual Machines: 4
 Clusters: 1
 Networks: 7
 Datastores: 4

Custom Attributes

Tags

vSphere Client Administrator@VSPHERE.LOCAL

VxRail-Cluster ACTIONS

Summary Monitor Configure Permissions Hosts VMs Datastores Networks Updates

Total Processors: 48
Total vMotion Migrations: 0
Fault Domains:

Related Objects
Datacenter VxRail-DC

vSphere HA Protected

CPU Memory

0% 50% 100%

CPU reserved for failover: 0 %
Memory reserved for failover: 0 %

vSphere DRS
Cluster Consumers

Tags

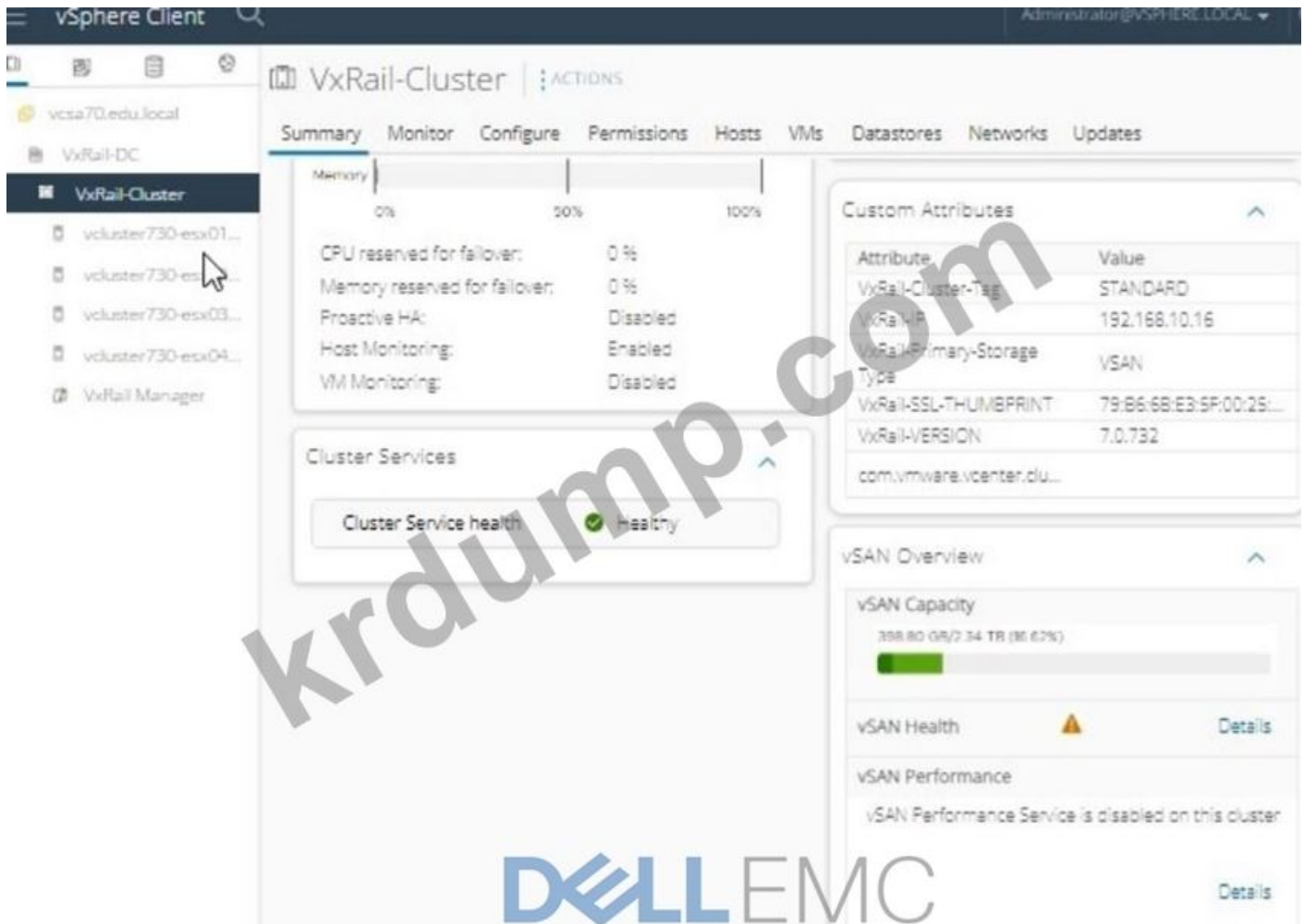
Cluster Resources

Custom Attributes

Attribute	Value
VxRailClusterType	STANDARD

DELL EMC

krdump.com



Answer:

□□ □□□ □□□ □□□□ □□□□□.

□□:

□□□□ □□ □□ □□□□ □□ □□ □□□□□□ vSAN □□□□□ □□□□□ vSAN □□ □□ □□ □ □□ □ □□□ □□□□ □□□□□□. □□ □□□ □□□□.

vSphere Client □ □□□:

vSphere □□□□□□ □□□.

□□□ □□□ □□□□□: administrator@vsphere.local.

□□□□□ □□□□□: VMw@r3!123.

□□□□ □□□□□.

vSAN □□□□ □□□□ □□:

□□ □□ □□□ VxRail-DC □ □□□□ VxRail-Cluster □ □□□□□.

□□ □□ □□□□□.

vSAN □□ □□□ □□□ □□□:

vSAN □□□□ □□□□ □□□□□.

□□ □□□ □□□□ □□□□□.

□□□ □□□□ □□□ □□□ □□□□□.

□□ □□□ □□□ □□ □□□□ □□□□ □□□ □□□□□.

□□ □□□ vSphere □□ □ □□□□ □□□□□.

□□ □□□ □□□□ □□□□□□□ □□□ □□□□□.

vSAN 00 0 0000 0000 0000:
00 vSAN 00000 00000 000000.
00 0 0000 00000 000000.
0000 00000 0000 0000 000000.
00 0 0000 0000 00 00000 000000 0000 0000000.
0000 00 0 00000 00000000 0000 0000000.
00 00:
vSAN > 0000 000000 0000000.
00 0000 000000 00 0 0000 000000 00 00000000 00 00 0000 000000 00
0 000000.
00 0000 000000 00 000000 0000 0000000.
0000000 00 00:
vSphere Client 0 0000:
00000000 00 vSphere Client 00000000 00000000.
00 0000 000000 00000000.
0000 00: administrator@vsphere.local.
00000: VMw@r3!123.
vSAN 000000 00:
vSphere Client 000000000 VxRail-DC 0 00000 VxRail-Cluster 0 0000000.
000000 00 00 0000000.
00 0000 0000 0000:
vSAN 0000 000000 00000000.
00 0000 000000 00 0000 0000000.
00 0000 0000 00 000000 00000000.
vSphere 00 0 000000 00000000.
0000 00000000.
00 0 0000 0000 0000:
vSAN > 00000000 00 0 0000 000000 00 0000 00000000.
00 0 0000 0000 00 000000 00000000.
0000 00000000.
00:
vSAN > 00000000 0 0000 000000 0000 000000 00000000 00 00000000 000000
0.
00:
VMware vSAN 00 0000: vSAN 0000
00 000000 00 00 0000 000000 00 00000000 vSAN 00000000 00 000000000
000000 000000 0000 000000 00 00 000000 0000 0000 0 000000.

NEW QUESTION: 7

VxRail Manager 0 00000000 00 0000 0000 00 00000000 0000 00000000.

□□ □□□ □□□ □□□□□?

- A. □□, □□ □ □□□□
- B. □□, □□ □ □□
- C. □□, □□□□ □ □□□□
- D. □□□□, □□□□ □ □□

Answer: ([SHOW ANSWER](#))

NEW QUESTION: 8

VxRail □□□□ □□ NIC□ VxRail □□□ □□ □□ □□□ □ □ □□□ □□ □□□□□.
□□□□ □□□□ □□□□ □□□□ □□□ □□ □□□□ □□□□?

- A. □□□ □□ NIC□ □ □□ □□ □□ □□.
- B. □□ NIC □ PCIe NIC □□□ □□
- C. PCIe NI□ □ □□□ □□
- D. □ □□ □□ NIC□ □□

Answer: B ([LEAVE A REPLY](#))

NEW QUESTION: 9

VxRail □□□□□ vSAN □□ □□□□ □□□□□ □□□ □□□□□. VxRail □□□□□ □□
□ □ □ □□□ □□□□ □□ vCenter□ □□□ □□□□ □□□□?

- A. □□ > vSAN > □□ □□□ □ □□ □□□□
- B. □□ > vSAN > □□□ □□ > □□ □□□ □ □□ □□□□
- C. □□ > vSAN > □□ > □□ □□□ □ □□ □□□□
- D. □□ > vSAN > □□ □□ > □□ □□□ □ □□□ □□□□

Answer: C ([LEAVE A REPLY](#))

NEW QUESTION: 10

□□□□ VxRail □□□ □□□□□?

- A. □□□ □□□ □□ □□ vCenter Server
- B. □□□ □□□ □□ □□ □□□□ □□ □□ vCenter Server
- C. □□□ □□□ □□ □□ □□□□ □□ □□ vCenter Server
- D. □□ DNS□ □□ □□ vCenter Server

Answer: ([SHOW ANSWER](#))

NEW QUESTION: 11

□□□□ VxRail □□□□□ G □□□ □□ 3□□ □□□ □□□□□. □□□ 5□□ □□ G □□□□
□□□ □□□ □□□□□.

- A. 5□□
- B. 2□
- C. 10U
- D. 1U

Answer: (SHOW ANSWER)

NEW QUESTION: 12

VxRail □□□□ □□ □□ □□ □□□□ □□□□ VxRail □□□□ □□□□ □□□□ □□□□.

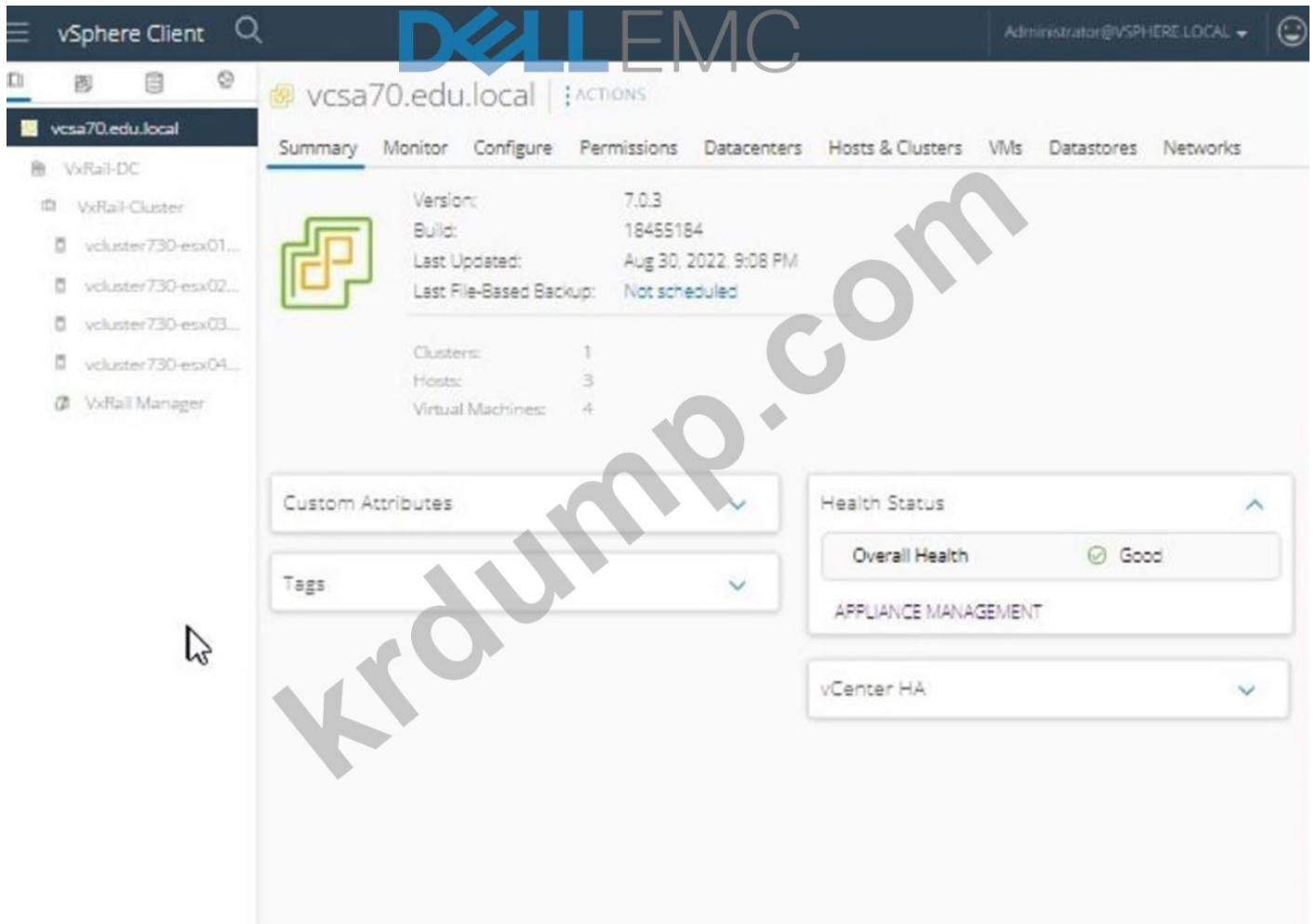
□□ □□□□ □□□□?

- A. □□ □□□□
- B. □□□□ □□□□
- C. vSphere vMotion □□□□
- D. □□ SAN □□□□

Answer: B (LEAVE A REPLY)

NEW QUESTION: 13

□
□□□□ VxRail Dell □□□□ □□□□ □□□□, □□ □□ □□□□ □□□□ □□□□□□ □
□ □□□ "V0730040000000" □ □□□ □□□□ □□□□ □□□ □□□□□□.
□□□ □□ □□□ □□□ □□□□□□.
"□□□@vsphere.local"
□□□□□ "VMw@r3!123"□□□□.
□□□□□□ □□□□ □□□ □□□ □□□□ □□□□□□ □□□□□□.



vSphere Client Administrator@VSPHERE.LOCAL

VxRail-DC

Summary Monitor Configure Permissions Hosts & Clusters VMs Datastores Networks Updates

Hosts: 3
Virtual Machines: 4
Clusters: 1
Networks: 7
Datastores: 4

Custom Attributes: Tags

vSphere Client Administrator@VSPHERE.LOCAL

VxRail-Cluster

Summary Monitor Configure Permissions Hosts VMs Datastores Networks Updates

Total Processors: 48
Total vMotion Migrations: 0
Fault Domains:

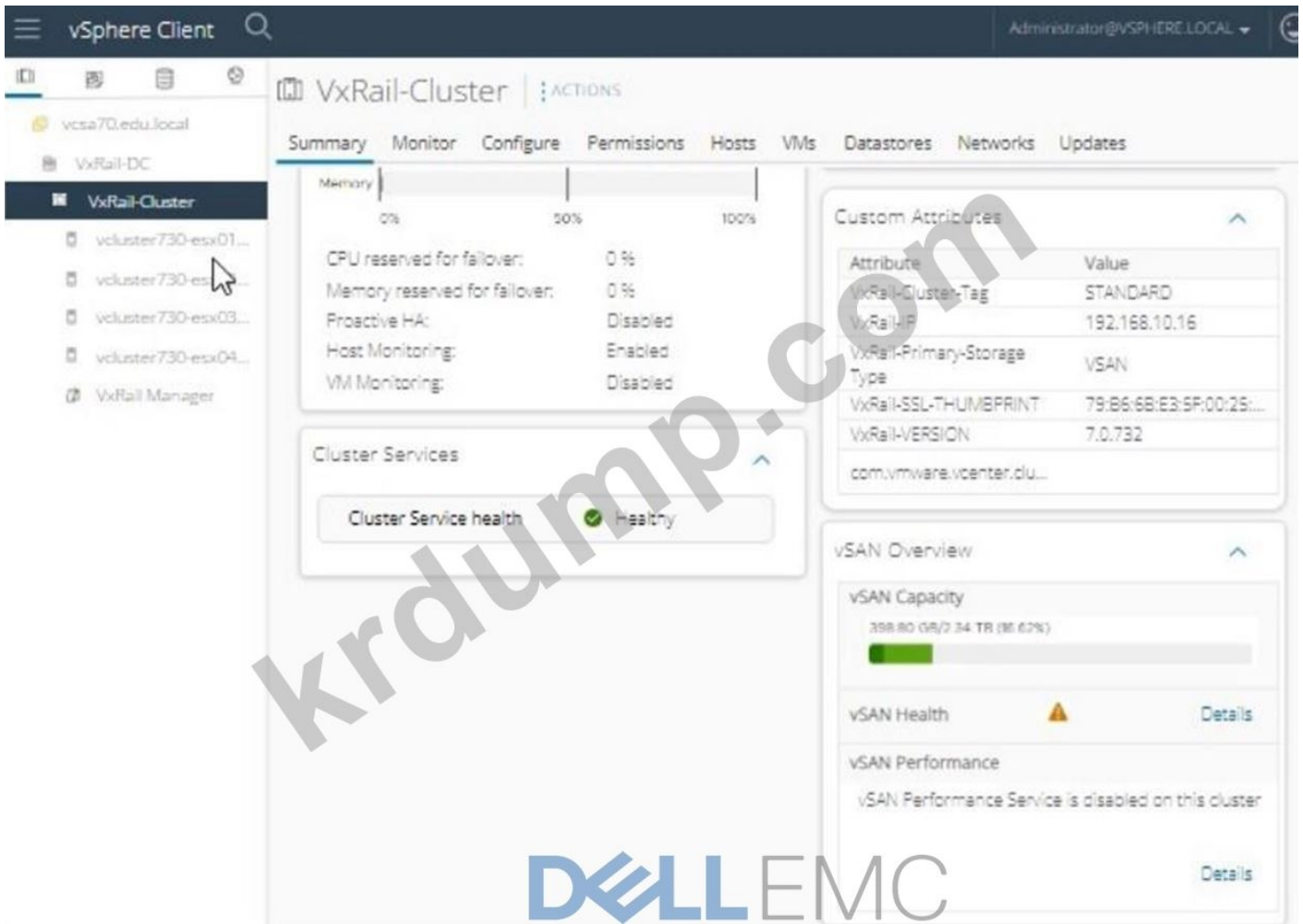
Related Objects: Datacenter, VxRail-DC

vSphere HA: Protected

CPU reserved for failover: 0%
Memory reserved for failover: 0%

vSphere DRS
Cluster Consumers
Tags
Cluster Resources
Custom Attributes

Attribute	Value
VxRail-Cluster-Tag	STANDARD



Answer:

VxRail `vcsa70.edu.local VxRail-DC VxRail-Cluster vcluster730-esx01... vcluster730-esx02... vcluster730-esx03... vcluster730-esx04... VxRail Manager`

* vSphere Client `Administrator@vSphere.local`

* vSphere `Administrator@vSphere.local`

* `Administrator@vSphere.local`

* `Administrator@vSphere.local:VMw@r3!123`

* `Administrator@vSphere.local`

* `Administrator@vSphere.local "V0730040000000"`

* vSphere Client `Administrator@vSphere.local VxRail-Cluster`

* VxRail-DC `Administrator@vSphere.local VxRail-Cluster`

* `Administrator@vSphere.local`

* `Administrator@vSphere.local`

(`vcluster730-esx01, vcluster730-esx02, vcluster730-esx03, vcluster730-esx04`) `Administrator@vSphere.local`

`Administrator@vSphere.local V0730040000000`

* `Administrator@vSphere.local`

* `Administrator@vSphere.local`

* `Administrator@vSphere.local`

* `Administrator@vSphere.local > Administrator@vSphere.local`

* `Administrator@vSphere.local`

* `Administrator@vSphere.local`

Answer: D (LEAVE A REPLY)

vCenter Server, VxRail Manager, vSAN, VxRail. VxRail Manager, vSAN, VxRail. vCenter Server, VxRail Manager, vSAN, VxRail.

:

Dell VxRail Manager: VxRail Manager

D-VXR-OE-23 DumpTop D-VXR-OE-23 ! DumpTop **D-VXR-OE-23**, DumpTop D-VXR-OE-23 DumpTop D-VXR-OE-23 <https://www.dumptop.com/EMC/D-VXR-OE-23-dump.html> (49 Q&As Dumps, **30%OFF Special Discount: KrDump**)

NEW QUESTION: 17

VxRail Dell EMC VxRail Manager?

- A. > > >
- B. > > >
- C. > > >
- D. > > >

Answer: A (LEAVE A REPLY)

NEW QUESTION: 18

VxRail VxRail vCenter Server VxRail VM?

- A. VxRail Manager, vCenter Server Platform Services Controller
- B. vRealize Log Insight /VE
- C. VxRail Manager /VE
- D. vCenter Server, Platform Services Controller /VE

Answer: (SHOW ANSWER)

NEW QUESTION: 19

vSAN?

- A. SHA-512
- B. SHA-256
- C. SHA-2
- D. SHA-1

Answer: D (LEAVE A REPLY)

Answer: D ([LEAVE A REPLY](#))

NEW QUESTION: 24

□□ □□□ VxRail □□□□ □□□□□ □□ □□□□ □□□□ □□□□ □□ □□ □□□ □□ □□□?

- A. RAID-1
- B. RAID-6
- C. RAID-5
- D. RAID-1/10

Answer: A ([LEAVE A REPLY](#))

NEW QUESTION: 25

□□□ 1U □ □□□ VxRail □□□ □□□□□?

- A. G □□□
- B. S □□□
- C. P □□□
- D. E □□□

Answer: ([SHOW ANSWER](#))

NEW QUESTION: 26

VxRail Manager □□□□ □□□ □□□□ IOPS□ □□□□□ □□□.

□□ □□ □□□□ □□□?

- A. □□ > □□ > □□□□
- B. □□ > □□ > □□□□
- C. □□ > □□ > □□
- D. □□ > □□ > □□

Answer: ([SHOW ANSWER](#))

NEW QUESTION: 27

VxRail □□□□□ □□□□□ □□ □ □□□ □□□□ □□□ □□□ □□□□□. Dell EMC □ □□□ □□□ □□□□ □□ □□□□□. □ vCenter□ vCenter Standard □□□□□ □□□□□. □□□□ □□ □□ □□□ □□□□ □□□□ □□ □□□□ □□□□□□□□□□ □□□□.

□□ □□□□□□ □□□ □□□□ □□□?

- A. □□□ □□ □□
- B. □□ □□□□ □□ □□□□ □□□□□□.
- C. DRS□ □□□□ □□□□□□□□ □□□□□.
- D. □□ □□□□□ □□□ □□□□ □□□□□.

Answer: ([SHOW ANSWER](#))

NEW QUESTION: 28

VxRail □□□□□□ VCF□ □□□□ □□ □□□ □□□□?

- A. □□ □□ □□ □□ □□□ □□ □□□ □ □□□□
- B. □□□□ □□□ □□
- C. □□□□ □□ □ □□ □□ □□
- D. □□□ □□ □ □□□□ □□ □□□ □□□□□□.

Answer: C ([LEAVE A REPLY](#))

NEW QUESTION: 29

VxRail □□□□□□□□ vSAN□ □□□ □□□ □□□□□ □□□ □□□ □□□□ □□□□ □ □□□ □□□□□?

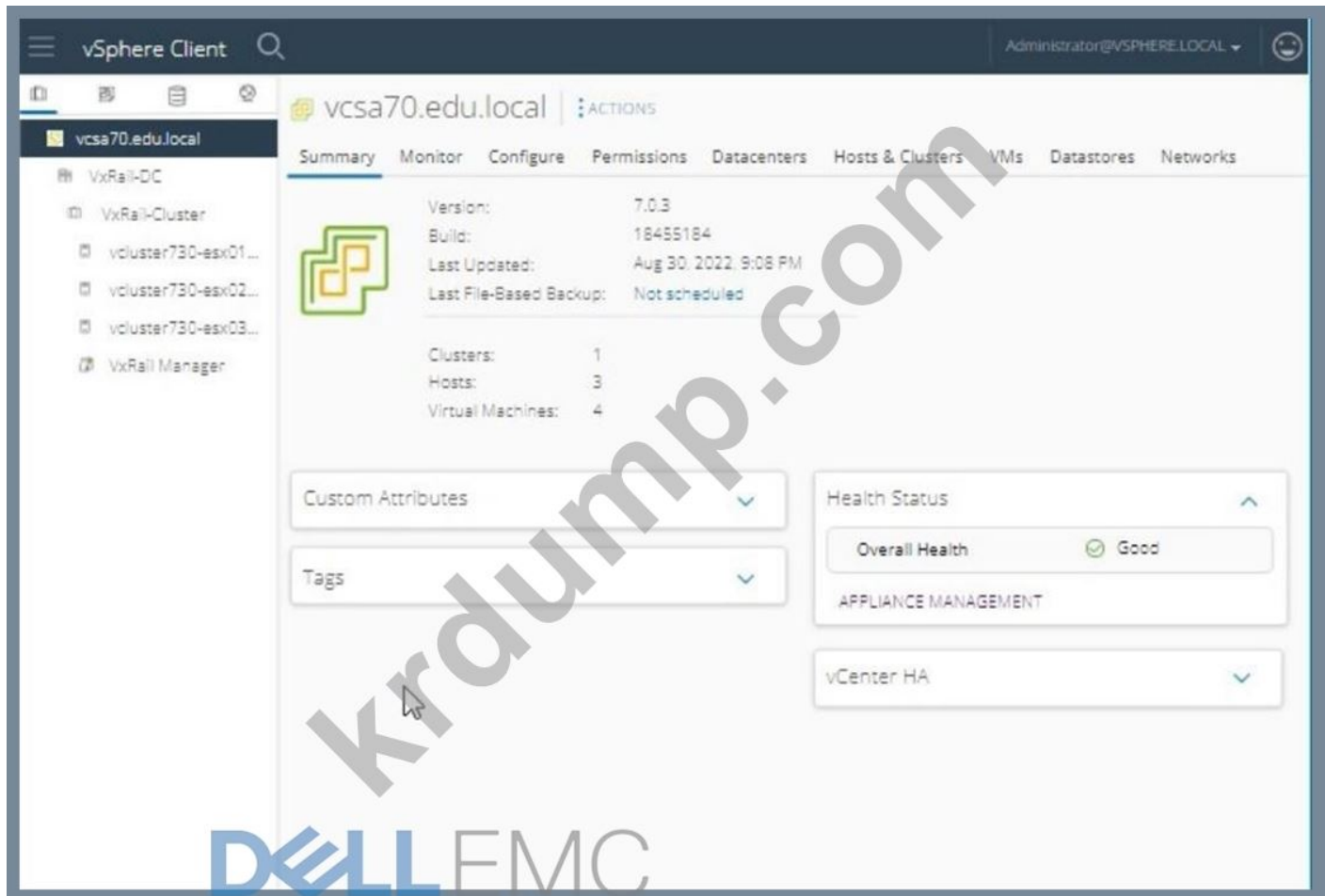
- A. □□
- B. □□
- C. □□ □□
- D. □□□ □□□

Answer: A ([LEAVE A REPLY](#))

NEW QUESTION: 30

□□ □□ □, □ □□□ □□□□□ vSAN □ vMotion □□ □□□ □□ □□□□□ □ □□ □ □□ □□□ □□□□□ □□□□□□. □□□ □□ □□□ 2□□ □□ □□□ 1□□ □□□ □ □□□□.

□□□□ □□□□ □□ □□□□□□ □□□□ □□□ □□□□□□.



vSphere Client Administrator@VSPHERE.LOCAL

VxRail-DC

Summary Monitor Configure Permissions Hosts & Clusters VMs Datastores Networks Updates

Hosts: 3
Virtual Machines: 4
Clusters: 1
Networks: 7
Datastores: 4

Custom Attributes: Tags

vSphere Client Administrator@VSPHERE.LOCAL

VxRail-Cluster

Summary Monitor Configure Permissions Hosts VMs Datastores Networks Updates

Total Processors: 48
Total vMotion Migrations: 0
Fault Domains:

Related Objects
Datacenter VxRail-DC

vSphere HA Protected

CPU reserved for failover: 0%
Memory reserved for failover: 0%

vSphere DRS
Cluster Consumers
Tags
Cluster Resources
Custom Attributes

Attribute	Value
VxRail-Cluster-Tag	STANDARD

* □□ □□□ □□□ □□□□ □□□ □□□□□(□□ □□□□ □□ □□□□ □□□ □).

* vSAN □□ □□ □□ □□ □□:

* □□□-□□□ □ □□□ □ □□□□ □□ □□□□□ □□ □□ □□□ □□□□ □□□□ □□ □□□□□.

* □□□ □□□□ □□ □□□ □□□□□.

* vMotion □□ □□ □□ □□:

* vMotion □□ □□□ □□□ □□□ □□□□ □□□□ □□ □□□ □□□□□.

* □□ □□ □□□ □ □□ □ □□ □□□ □□□□□.

* vMotion □ □□ □□□-□□□ □ □□:

* □ □□ □ □□ □□ □□□□ □ □□□ □□ □□ □□□□ □□□□ □□□ □□□□□.

* □□□ □□ □□□□ □□ □□□ □□ □□ □□□ □□□□ □□ □□□ □□□□ □□□□ □□□□ □□□□.

* □□ □□□ □□□ □□□□ □□□ □□□□□(□□ □□□□ □□ □□□□ □□□ □).

* vMotion □ □□ □□ □□ □□ □□:

* □□□-□□□ □ □□□ □ □□□□ □□ □□□□□ □□ □□ □□□ □□□□ □□□□ □□ □□□□□.

* □□□ □□□□ □□ □□□ □□□□□.

* □□ □□:

* □□□□ □□□ □□□□ □□ □□□ □□□□ □□□□□□, □ □□ □□ □□ □□□ □□ □□ □□□ □□□-□□□ □□ □□□□ □□□ □□□□□.

□□:

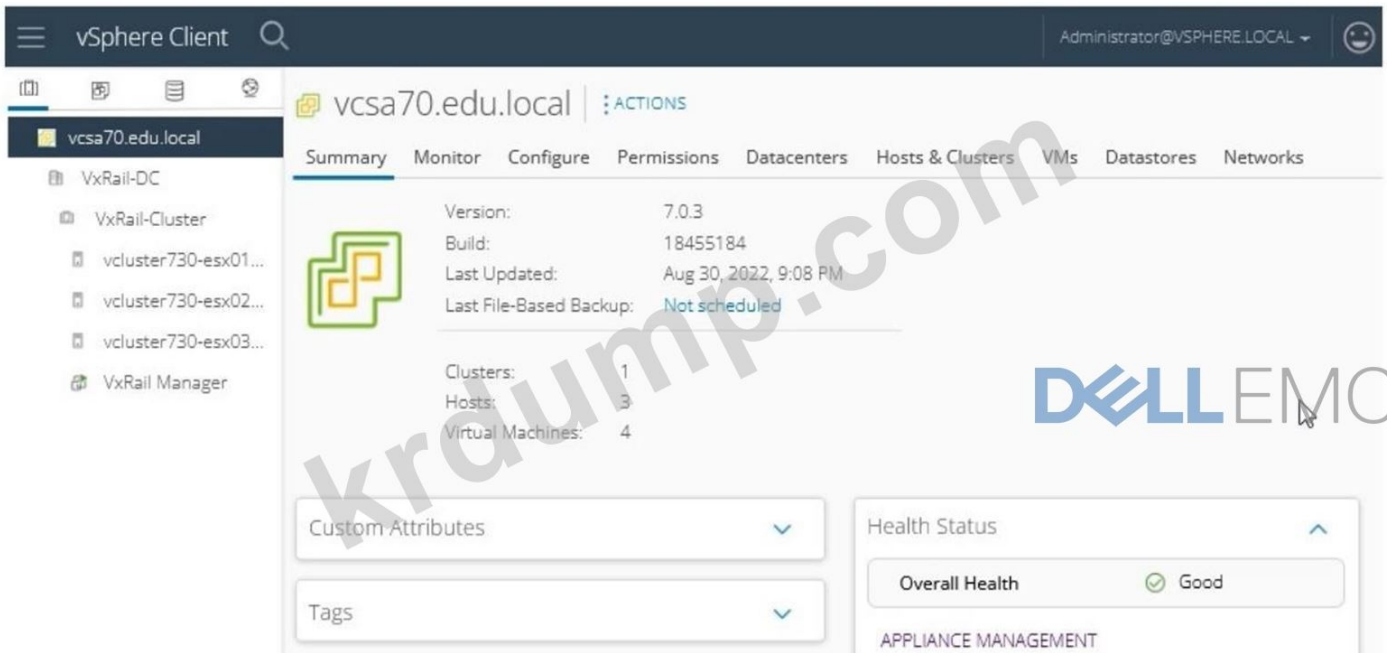
VMware vSphere □□□□ □□□: vSphere □□□□

□ □□□□□ □□□□ □□ □□□□□ □□□ □□□-□□□ □□ □□□□ vSAN □ vMotion □□ □□□ □□ □□ □□ □□□ □□□□ □□□□□ □□□□□. □□ □□ □□□□ □□ □□ □□□□ □□□□ □□□□ □□□ □□□□□.

□□ 2, □□ □□ □□ 2□□ □□□ □□□□ □□□□ VxRail □□□□□□ □□□□ □□□.

□□□□□□ □□□□ VxRail □□□□□□ □□□□ □□ □□□ □□□ □ □□□□.

□□□□□ □□ □□□ □□□ □□□□, □□□ □□□□, □□□ □□□□ □□□ □□ □□□ □□□□□.



NEW QUESTION: 31

Which VxRail configuration option is used to enable vSphere HA?
 A. vSAN High Availability
 B. vSAN High Availability
 C. vSAN High Availability
 D. vSAN High Availability

Which VxRail configuration option is used to enable vSphere HA?

- A. vSAN High Availability
- B. vSAN High Availability
- C. vSAN High Availability
- D. vSAN High Availability

Answer: D (LEAVE A REPLY)

D-VXR-OE-23 DumpTop **D-VXR-OE-23**
 ! DumpTop **D-VXR-OE-23**, DumpTop **D-VXR-OE-23**
 DumpTop **D-VXR-OE-23**
<https://www.dumptop.com/EMC/D-VXR-OE-23-dump.html>
 (49 Q&As Dumps, **30%OFF Special Discount: KrDump**)

NEW QUESTION: 32

vSAN HCI Mesh is used to enable vSphere HA?
 A. VM
 B.
 C.
 D.
 E.
 F.
 G.
 H.
 I.
 J.
 K.
 L.
 M.
 N.
 O.
 P.
 Q.
 R.
 S.
 T.
 U.
 V.
 W.
 X.
 Y.
 Z.

- A. VM
- B.
- C.
- D.
- E.
- F.
- G.
- H.
- I.
- J.
- K.
- L.
- M.
- N.
- O.
- P.
- Q.
- R.
- S.
- T.
- U.
- V.
- W.
- X.
- Y.
- Z.

D. VM □□□ □□ □□ □□□□□.

Answer: D ([LEAVE A REPLY](#))

NEW QUESTION: 33

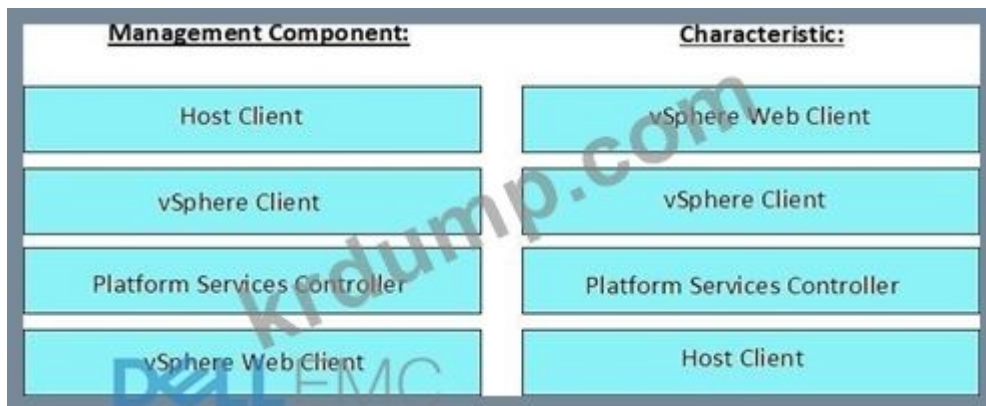
□ □□ □□□□□ □□□ □□ □□□□□.

Management Component:

Characteristic:



Answer:



NEW QUESTION: 34

□□ DNS □□□ □□ VxRail □□□□□ □□□□ □□ DNS □□□ □□□ □□□□□?

- A. VxRail □□□ VM
- B. vCenter □□ □□□□□□
- C. vSphere □□ □□□
- D. □□ □□□ VM

Answer: ([SHOW ANSWER](#))

NEW QUESTION: 35

VxRail Stretched Cluster □ □□□ □□□ □□ □□ □□□ □□□ □□□ □□□ □ □□□□?

- A. RAID 1
- B. RAID 1/10
- C. RAID 6

D. RAID 5

Answer: A ([LEAVE A REPLY](#))

NEW QUESTION: 36

Which RAID configuration is used by default for vSAN storage? (Select one)

- A. RAID 10 with 75% deduplication
- B. RAID 10 with 85% deduplication
- C. RAID 10 with 90% deduplication
- D. RAID 10 with 80% deduplication

Answer: D ([LEAVE A REPLY](#))

NEW QUESTION: 37

Which RAID configuration is used by default for VxRail Stretched Cluster? (Select one)

- A. RAID 1/0
- B. RAID 6
- C. RAID 1
- D. RAID 5

Answer: C ([LEAVE A REPLY](#))

VxRail Stretched Cluster uses RAID 10 with 80% deduplication. RAID 10 is a RAID configuration that combines RAID 1 (mirroring) and RAID 0 (striping). It provides high performance and data redundancy. VxRail Stretched Cluster uses RAID 10 with 80% deduplication to provide high performance and data redundancy.

NEW QUESTION: 38

Which vSphere Standard Edition feature is required for VxRail? (Select one)

- A. vMotion
- B. vSAN
- C. vGPU
- D. vGPU with vGPU passthrough

Answer: ([SHOW ANSWER](#))

NEW QUESTION: 39

Which RAID configuration is used by default for vSAN storage? (Select one)

- A. RAID 10
- B. RAID 1
- C. RAID 5
- D. RAID 6

Answer: C ([LEAVE A REPLY](#))

NEW QUESTION: 40

VxRail 4 NIC 4 VxRail E560 4 VxRail E560

vmnic VxRail ,

- A. vmnic0 vmnid /
- B. vmnict vmnic2 /
- C. vmnic0 vmnid actrve/standby
- D. vmnic0 vmnic3 /

Answer: C (LEAVE A REPLY)

4 NIC 4 VxRail E560 VxRail VxRail / vmnic0 vmnic1 .

NEW QUESTION: 41

VxRail VxRail VM .

.

- A. 6
- B. 5
- C. 4
- D. 7

Answer: A (LEAVE A REPLY)

NEW QUESTION: 42

GET/v1/{SN}

API 404

.

.

A. .

B. {sn} .

C. .

D. API .

Answer: (SHOW ANSWER)

API 404 GET/v1/hosts/{sn} 404 (sn) .

NEW QUESTION: 43

VxRail 7.0.x

.

VxRail □□□ □□□ □□: root

VxRail □□□ □□□□:

VMw@r3!123

vCenter □□□:

□□□@vsphere.local

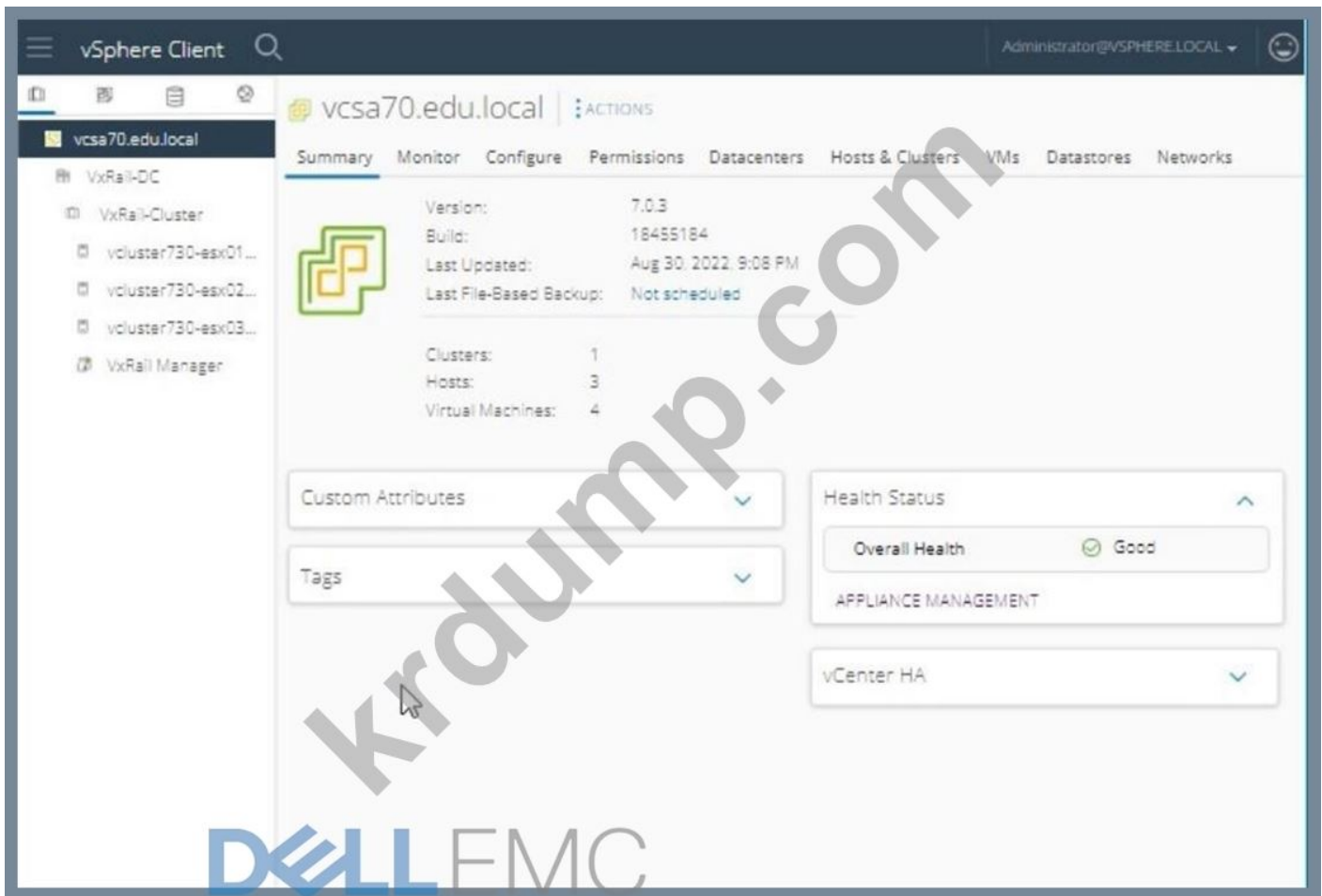
vCenter □□□ □□□□:

VMw@r3!123

VCSA □□□ □□: root

VCSA □□□□: VMw@r3!123

□□□□□□ □□□□ □□□□□□ □□ □□ □□□□ □□□□□□□□□□.



vSphere Client Administrator@VSPHERE.LOCAL

VxRail-DC

Summary Monitor Configure Permissions Hosts & Clusters VMs Datastores Networks Updates

Hosts: 3
Virtual Machines: 4
Clusters: 1
Networks: 7
Datastores: 4

Custom Attributes: Tags

vSphere Client Administrator@VSPHERE.LOCAL

VxRail-Cluster

Summary Monitor Configure Permissions Hosts VMs Datastores Networks Updates

Total Processors: 48
Total vMotion Migrations: 0
Fault Domains:

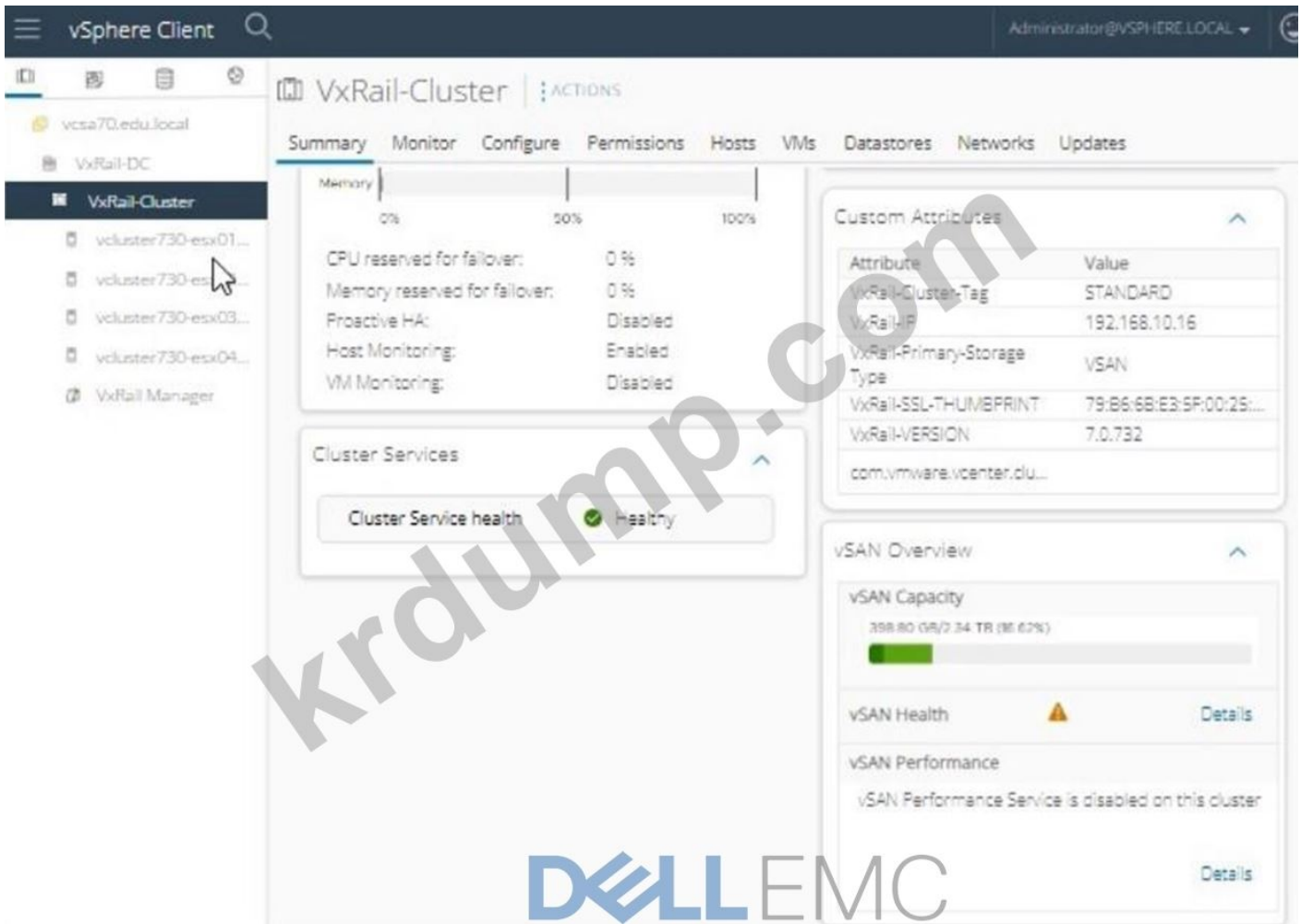
Related Objects: Datacenter VxRail-DC

vSphere HA Protected

CPU reserved for failover: 0%
Memory reserved for failover: 0%

vSphere DRS
Cluster Consumers
Tags
Cluster Resources
Custom Attributes

Attribute	Value
VxRail-Cluster-Tag	STANDARD



Answer:

- □□□(□□□ □□□ □□□□ □□)□□ VxRail □□□□□ □□ □□ □□□□ □□□□ □□□□ □□ □□□ □□□□.
- * VxRail Manager□ □□□□□□□:
- * □ □□□□□ □□ VxRail Manager URL□ □□□□□□.
- * □□ □□□ □□□□ □□□□□□□:
- * □□□ □□: root
- * □□□□:VMw@r3!123.
- * □□ □□ □ □□□ □□:
- * □□□ □ □□□□□ □□□□ VxRail□ □□ □□□ □□□□□.
- * □□ □□□ VxRail □□□ □□□ □□□□□ □□□□ □□□□ □□ □□□□□ □□□□ □□□□□□□.
- * □□□□□ □□ □□□□□:
- * □□□□ □□□□□□ □□□□ □□□ □ □□ □□ □□□□ □□□□ Dell EMC □□ □□□□ □ □□□ □□□□□ □□□ □□□□□□□□.
- * □□□□□ □□□ □□□ □□ □□(USB □□□□, □□ HDD □)□ □□□□□□.
- * VxRail Manager□ □□□□□□ □□ □□□:
- * □□□ □□ □□□ □□□□□□ □□ □□ □□□ □□□□□.
- * VxRail Manager□□ □□□ □□□□□ □□□□ □□□□□.
- * □□ □□□□□□ □□□□ □□ □□□□□□ □□□□□ □□□ □□□ □□□□□.

* □□□□□ □□□ □□□□□□.

* □□□□□ □□:

* □□□□ □□□□ □ □□□ □□□ □□ □□□□□ □□□□□ □□□□□.

* □□□□□ □□□□ □□□ □□ □ □□□□ □□ □□□ □□□ □□□□□ □□ □□ □□□ □□□□□.

* □□□□□ □□ □□ □□□□:

* □□□□□ □□□□□□□ □□□ □□□□□. VxRail Manager □□□□□□ □□ □□ □□□ □ □□□□□□.

* □□□□□ □□ □□□ □□□ □□□□ □□□□□ □□□□□.

* □□□□□ □ □□:

* □□□□□□ □□□□ VxRail Manager□ vCenter□ □ □□□ □□□□ □□□□□ □□□□ □.

* □□□□□ □□□ □□□□ □□ □□ □□□ □□□□□ □□□□□.

□□□□□ □□ □□:

* VxRail Manager□ □□□:

* □□□□□□ □□ VxRail Manager □□□□□□ □□□□□.

* □□□□ □□ □□□ □□□□ □□□□□□.

* □□□□ □□: root

* □□□□:VMw@r3!123.

* □□□□□ □□□□ □□:

* VxRail Manager □□□□□□□ □□□ □□□□□ □□ □□□□□ □□□□□□ □□□□□.

* □□□□□ □□ □□□:

* □□ □□□□□□ □□□□□.

* □□□□□ □□□□ □□ □□□□□ □□□□□ □□□ □□□□□.

* □□□□□ □□□□ □□□ □□□□□ □□□□□.

* □□□□□ □□:

* □□□□□ □□□□ □□□ □□□ □□ □□□□□□ □□□□□.

* □□□□□ □□ □□□ □□□□ □□□□ □□□□□.

* □□□□□ □□□□ □□□□:

* VxRail Manager □□□□□□□ □□□□□ □□□ □□□□□□□.

* □□□□□□ □□□ □□□ □□□□ □□□ □□□ □□□□□.

* □□□□□ □□ □□:

* □□□□□ □ VxRail Manager □□□□□□ □ □□□ □□□□□.

* □□□□□ □□□ □□□□ □□ □□ □□□□ □□□□□ □□□□□.

□□:

Dell VxRail □□□□□ □□□: VxRail □□□□□□ □□□

□□: □ □□□□ VxRail Manager □□□□□□ □□□□□ □□□□□. □□□ □□ □□ □□ □□□ □□□ □□ □□ □ □□□ □□ □□□ □□□ □□ VxRail □□□□□ □□□□ □□□□□.

/v1/□□□/{SN}□ □□□□□.

API □□ 404□ □□□□□□□□.

□□ □□□ □□□ □□□□□□?

A. API□ □□□□□□ □□ □□□□ □□□□□□ □□□□□□□□.

B. □□ □□□ □□□□□□□.

C. □□□□ □□□□ □□□□□□.

D. □□□ {sn}□ □□□□ □□□□□.

Answer: ([SHOW ANSWER](#))

NEW QUESTION: 50

□□ VDS □□ □□ □□ □□□ □□□ □□ LAG EtherChannel □□□ □□□□□□?

A. □□□ NIC □□ □□ □□

B. □□ □□ □□ □□ □□

C. IP □□ □□ □□

D. □□ MAC □□ □□ □□

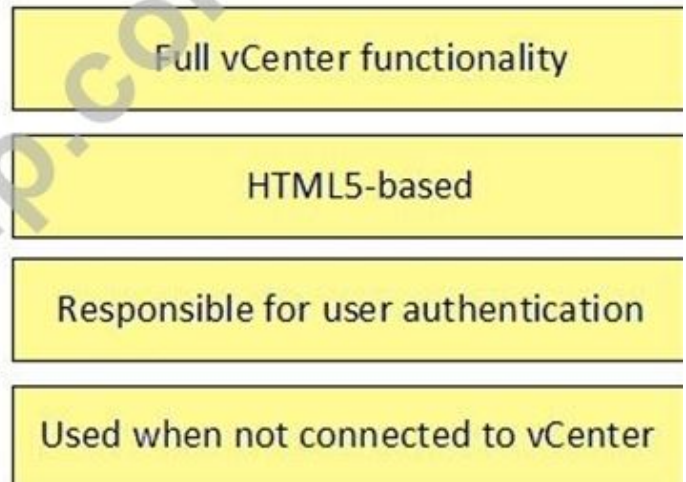
Answer: C ([LEAVE A REPLY](#))

NEW QUESTION: 51

□ □□ □□□□□ □□□ □□ □□□□□□.

Management Component:

Characteristic:



Answer:

