

Cisco.300-820.v2024-04-17.q104

□□□□:	300-820
□□□□:	Implementing Cisco Collaboration Cloud and Edge Solutions
□□□:	Cisco
□□ □□ □□□:	104
□□:	v2024-04-17
# □□ □:	392
# □□ □□□:	1040
https://www.krdump.com/Cisco.300-820.v2024-04-17.q104.html	

NEW QUESTION: 1

Configuration

Rule name	* CCNP-Collab	i
Description	CCNP-Collab	i
Priority	* 1	i
Protocol	SIP	i
Source	Local Zone	i
Request must be authenticated	No	i
Mode	Alias pattern match	i
Pattern type	Regex	i
Pattern string	* 1?3+5	i
Pattern behavior	Replace	i
Replace string	135	i
On successful match	Stop	i
Target	* Traversal Zone	i
State	Enabled	i

□□□□ □□□□□. □□□□ □□ □□□□ □□□□□□ □□ □□□ □□□□ □ 13358□ □□□□ □□ □□□□ □□
□□?

- A. 13358□ 135□ □□□ □ □□ □□□□ □□□□.
- B. 13358□ □□ □□□□ □□ □□□□□.
- C. 13358□ 135□ □□□ □ □□ □□□□ □□□□□.
- D. 13358□ 135□ □□□□ □□□ □□□ □□□□□.

Answer: A ([LEAVE A REPLY](#))

NEW QUESTION: 2

Cisco UCM□□ 75080001@expc1a.pod8.test.lab URI□ □□□□ Expressway□ □□□ □□□□. (7508...)
 @expc1a.pod8.test.lab.*□ □□ □□□□ □□ □□□ □□ □□□□ □□ Expressway□□ □□□ □□ □
 □□□ □□□□□?

75080001@conf.pod8.test.lab?

- A. \1@conf.pod8.test.lab.!
- B. \1@conf.pod8.test.lab.@
- C. \1@conf.pod8.test.lab
- D. \1@conf.pod8.test.lab.*

Answer: C ([LEAVE A REPLY](#))

NEW QUESTION: 3

□□□□ □□□□□.

Configuration

Rule name * CCNP-Collab ⓘ

Description CCNP-Collab ⓘ

Priority * 1 ⓘ

Protocol SIP ⓘ

Source Local Zone ⓘ

Request must be authenticated No ⓘ

Mode Alias pattern match ⓘ

Pattern type Regex ⓘ

Pattern string * 1?3+5 ⓘ

Pattern behavior Replace ⓘ

Replace string 135 ⓘ

On successful match Stop ⓘ

Target * Traversal Zone ⓘ

State Enabled ⓘ

□□□ □□ □□□□ □□□□□ □□ □□□ □□□ □ □□□ □□□□ □□□□?

- A. 13358□ 135□ □□□□ □□□ □□□ □□□□□.
- B. 13358□ 135□ □□□ □ □□ □□□□ □□□□□.
- C. 13358□ □□ □□□□ □□ □□□□□.
- D. 13358□ 135□ □□□ □ □□ □□□□ □□□□□.

Answer: [\(SHOW ANSWER\)](#)

NEW QUESTION: 4

Cisco Webex Messenger□ □□ □□□□□ Cisco Jabber□ □□□ □ □□ □□□ □□□□□?

- A. □□ □□□□ □□ □□□ □□□ □□□□□.
- B. □□, □□ □ □□.
- C. □□□ □□□□□.
- D. □□□ □□□ □□□ □□□□□.

Answer: [\(SHOW ANSWER\)](#)

NEW QUESTION: 5

Transforms							
Priority	State	Description	Pattern	Type	Behavior	Replace	
<input type="checkbox"/>	1	Enabled	Strip Domain from all calls	(.*)@(.*)	Regex	Replace	11
<input type="checkbox"/>	2	Enabled	add pod1.local domain to all requests	(.*)	Regex	Replace	11@pod1.local

Search rules											
Priority	Rule name	Protocol	Source	Mode	Pattern type	Pattern string	Pattern behavior	On match	Target	SIP variant	Enabled
1	Route all Calls to Local Zone	Any	Any	Any alias				Continue	LocalZone	Any	<input checked="" type="checkbox"/>

Search history				
Search type	Source	Destination	SIP variant	Status
SIP (INVITE)	jabberuser@pod1.local	sip.endpointc@pod1.local	Standards-based	Not found
SIP (INVITE)	jabberuser@pod1.local	sip.endpointb@pod1.local	Standards-based	Not found
SIP (INVITE)	jabberuser@pod1.local	sip.endpointa@pod1.local	Standards-based	Not found

Expressway is configured with the following search rules and transforms. A user dials "EndpointA" H.323 endpoint on Expressway. Expressway sends the call to "EndpointB@pod1.local" SIP endpoint. What happens next?

- A. Expressway sends the call to "EndpointA" SIP endpoint.
- B. Expressway sends the call to "EndpointB@pod1.local" SIP endpoint.
- C. Expressway sends the call to "EndpointC" SIP endpoint.
- D. Expressway sends the call to "EndpointA@pod1.local" SIP endpoint.

Answer: A (LEAVE A REPLY)

pod1.local SIP endpoint. Expressway sends the call to "EndpointA@pod1.local" SIP endpoint.

NEW QUESTION: 7

A user dials "EndpointA" H.323 endpoint on Expressway. Expressway sends the call to "EndpointB@pod1.local" SIP endpoint. What happens next?

XCP_JABBERD Detail=""%IP% ' 7400:(111) " ?

- A. Rich Media Expressway-E
- B. Expressway-E IP
- C. Expressway-E Expressway-C 8443 7400
- D. XCP Expressway-E

Answer: B (LEAVE A REPLY)

https://www.cisco.com/c/en/us/support/docs/unified-communications/expressway/118798-technote-cucm-00.htm

NEW QUESTION: 11

Cisco Webex ?

- A. Azure AD
- B. Exchange Expressway Connector
- C. OBTP
- D. Jabber

Answer: (SHOW ANSWER)

NEW QUESTION: 12

```
XmppSDK.dll #0, 201, Recv:<iq id='uid:527a7fe7:000000cfe:00000000' type='error'><bind
xmlns='urn:ietf:params:xml:ns:xmpp-stanzas' /></error></iq>

XmppSDK.dll #0, CXmppClient::onResourceBindError

XmppSDK.dll #0, 39, CTriClient::HandleDisconnect, reason:16
```

Cisco Jabber ? Jabber ?

- A. Cisco Unified Communications Manager
- B.
- C. XMPP
- D.

Answer: C (LEAVE A REPLY)

NEW QUESTION: 13

Answer: A,B (LEAVE A REPLY)

https://www.cisco.com/c/en/us/td/docs/voice_ip_comm/cloudCollaboration/wbxt/videomesh/cmgt_b_webex-video-mesh-deployment-guide/cmgt_b_hybrid-media-deployment-guide_chapter_010.html#reference_CAE1A60E80AE6EC7BF96DAE7980D792D

NEW QUESTION: 15

□□□□ □□□□□.

```
C:\Users\Administrator>nslookup
Default Server: Win2016-AD.example.com
Address: 192.168.10.10

> set type=all
> _cisco-uds._tcp.example.com4
Server: Win2016-AD.example.com
Address: 192.168.10.10

_cisco-uds._tcp.example.com          SRV service location:
priority                = 10
weight                  = 10
port                    = 8443
svr hostname            = cucm.example.com

> _collab-edge._tls.example.com
Server: Win2016-AD.example.com
Address: 192.168.10.10

_collab-edge._tls.example.com        SRV service location:
priority                = 10
weight                  = 10
port                    = 8443
svr hostname            = expressway-e.example.com

>
```

Jabber □□□□ □□ □□□□ □□□ □□□□ □□□□ □□□ □□□ "user@example.com"□□ □□□□
"□□□□ □□□□ □□ □□□□"□□ □□□ □□□□□. □□□□□ Jabber□□ □□□□ SRV □□□
□ □□□□□ □□□.

DNS A □□□ "expressway-e.example.com"□ Expressway-E IP□ □□□□ "cucm.example.com"□ Cisco
Unified Communications Manager□ □□□□□.

□□ □□□□ DNS □□□ □□□□□?

- A. collab-edge □□□□ 5061□ □□□□□ □□□□□.
- B. Expressway-E FQDN□ □□□□□ cisco-uds□ □□□□□.
- C. □□ DNS□ □□ cisco-uds SRV □□□□ □□□□□.

- C. □□□□ □□□□ □□□□ □□□ □ □□ □□□ □□□ □□□□□□ □□ □□□□ □□□□.
- D. □□ □□□ □□ □□□□ IP □□□□ □□ □□□□□ □□□□□.

Answer: D (LEAVE A REPLY)

NEW QUESTION: 19

Cisco ASA FirePOWER □□□□□ SIP □□□ □□□□□□ □□□ □□□□□?

- A. □□□ □□(config)#nospect_sip
- B. □□□ □□#no □□ sip
- C. □□□ □□(config)#policy-map global_policy
□□□ □□(config-pmap)#class-map Inspection_default
□□□ □□(config-pmap)#no □□ sip
- D. □□□ □□(config)#policy-map global_policy
□□□ □□(config-pmap)#class-map □□ □□□
□□□ □□(config-pmap)#inspect_sip

Answer: C (LEAVE A REPLY)

NEW QUESTION: 20

□□□□ □□□□□.

```
XmppSDK.dll #0, 201, Recv:<iq id='uid:527a7fe7:00000cfe:00000000' type='error'><bind
xmlns='urn:ietf:params:xml:ns:xmpp-stanzas' /></error></iq>

XmppSDK.dll #0, CXmppClient::onResourceBindError

XmppSDK.dll #0, 39, CTriClient::HandleDisconnect, reason:16
```

- Cisco Jabber □□□ □□□ □□□□ □□ □ □□ □□ □□□□ □□□□□. Jabber □□□□□□ □□□□□
□ □□ □□□ □□□□□?
- A. XMPP □□□ □□
 - B. □□□ □□□ □□ □□
 - C. □□□ □□ □□
 - D. Cisco Unified Communications Manager □□ □□

Answer: A (LEAVE A REPLY)

NEW QUESTION: 21

□□□□ □□□□□. □□ □□□ SIP□ □□□□ Cisco Expressway□ □□□□. SIP Nat/Alg□ □□ □□□
□ □□□□□. □□□ □□□□ □□ □□□ □□□□□. □□□ □□ □□□ □□□□□?

Unified Communications status
 Unified Communications (last updated: 14:11:51 PST)
 Unified Communications status: Enabled
 Unified CM registrations: Domain configured but no active zone connection
 IM and Presence Service: Domain configured but no active zone connection
 XMPP Federation: Not configured (Configure a domain on Expressway-C)
 Single Sign-On support: Not configured (Enable on the Unified Communications page)
 OAuth token with refresh: Not configured (Enable on the Unified Communications page)

Activity

Unified CM calls: Current video	0
Unified CM calls: Current audio (SIP)	0
Current UCM/LDAP basic authenticated sessions	8
Total UCM/LDAP basic authenticated sessions	15
Total provisioning requests since last restart	21

Domains

Name	Services	Associated zones
pod1.local	Unified CM registrations, IM and Presence Service	No associated zones

Servers

IM and Presence Service nodes	1
Unified CM servers	1
Unity Connection servers	There are no Unity Connection servers configured.

Zones

There are no Unified Communications traversal zones configured. Configure a secure Unified Communications traversal zone connection between this Expressway-C and the Expressway-E

```

xstatus zones zone 2
's Zones: /
Zone:
2:
Bandwidth:
ClusterUsage: "0"
LocalUsage: "0"
Name: "EXPE.pod1.local"
Status: "Active"
TraversalClient:
Peer:
SIP:
Address: "10.0.101.119"
Apparent: "10.0.101.115:27240"
LastStatusChange: "2021-02-02 14:24:21"
Port: "7001"
ResourceUsage:
NonTraversalCallsAvailable: "1500"
ProtocolMode: "Both"
RegistrationsAvailable: "0"
ResourceUsageValid: "True"
TURN:
Port:
Count: "0"
Port: "3478"
Ports:
Count: "1"
TURNRelaysAvailable: "1800"
TraversalCallsAvailable: "300"
Server: "TANDBERG/4137 (X12.5.3)"
Status: "Active"
Type: "TraversalClient"
  
```

- A. Expressway-C is configured to connect to Expressway-E. Cisco UCM is configured to connect to Expressway-E.
- B. Expressway-E is configured to connect to Expressway-C. SIP is configured to connect to Expressway-E.
- C. Expressway-C is configured to connect to Expressway-E. CallManager is configured to connect to Expressway-E.
- D. Expressway-E is configured to connect to Expressway-C. SIP is configured to connect to Expressway-E.

Answer: D (LEAVE A REPLY)

Expressway-E is configured to connect to Expressway-C. SIP is configured to connect to Expressway-E.

NEW QUESTION: 24

- Expressway-E is configured to connect to Expressway-C. Cisco Collaboration is configured to connect to Expressway-E.
- Expressway-E is configured to connect to Expressway-C. TURN is configured to connect to Expressway-E?
- A. Expressway-E is configured to connect to Expressway-C. CUCM 12.5 is configured to connect to Expressway-E.
 - B. ICE is configured to connect to Expressway-E.
 - C. STUN is configured to connect to Expressway-E.
 - D. Expressway-E is configured to connect to Expressway-C. ICE is configured to connect to Expressway-E.

Answer: (SHOW ANSWER)

0/0:

NEW QUESTION: 25

Expressway-C Expressway-E Expressway-E NIC NAT Expressway-C

- A. -EFQDN
B. Cisco UCM FQDN
C. Expressway-E DHCP
D. Cisco UCM DHCP

Answer: A (LEAVE A REPLY)

https://www.cisco.com/c/dam/en/us/td/docs/voice_ip_comm/expressway/config_guide/X8-11/Cisco-Expressway-Basic-Configuration-Deployment-Guide-X8-11-4. PDF

NEW QUESTION: 26

NAT NIC Expressway-E IP 192.168.10.63, NAT 203.0.113.5 Expressway-C

- A. 203.0.113.5
B. 192.168.10.63
C. 203.0.113.5
D. 192.168.10.63

Answer: B (LEAVE A REPLY)

NEW QUESTION: 27

Cisco Expressway SIP

- A.
B.
C.
D.

Answer: (SHOW ANSWER)

NEW QUESTION: 28

DNS

- A. 8443 _collab-edge
B. 5061 _cisco-uds-edge
C. 5061 _collab-edge
D. 8443 _cisco-uds

Answer: A (LEAVE A REPLY)

SRV IP 8443

NEW QUESTION: 29

- A. jabberuser@pod1.local. jabberuser
- B. Expressway-D _collab-edge._tls.pod1.local DNS SRV
- C. Skype Jabber DNS
- D. Jabber Webex pod1.local

Answer: B (LEAVE A REPLY)

NEW QUESTION: 35



- A. 4123@exp-name.exp.domain:<port> 1@exp.domain
- B. 413@exp-name.exp.domain:<port> 413@exp.domain
- C. 4123@exp-name.exp.domain:<port> 4123@exp.domain
- D. 4.3@exp-name.exp.domain:<port> 1@exp.domain

Answer: (SHOW ANSWER)

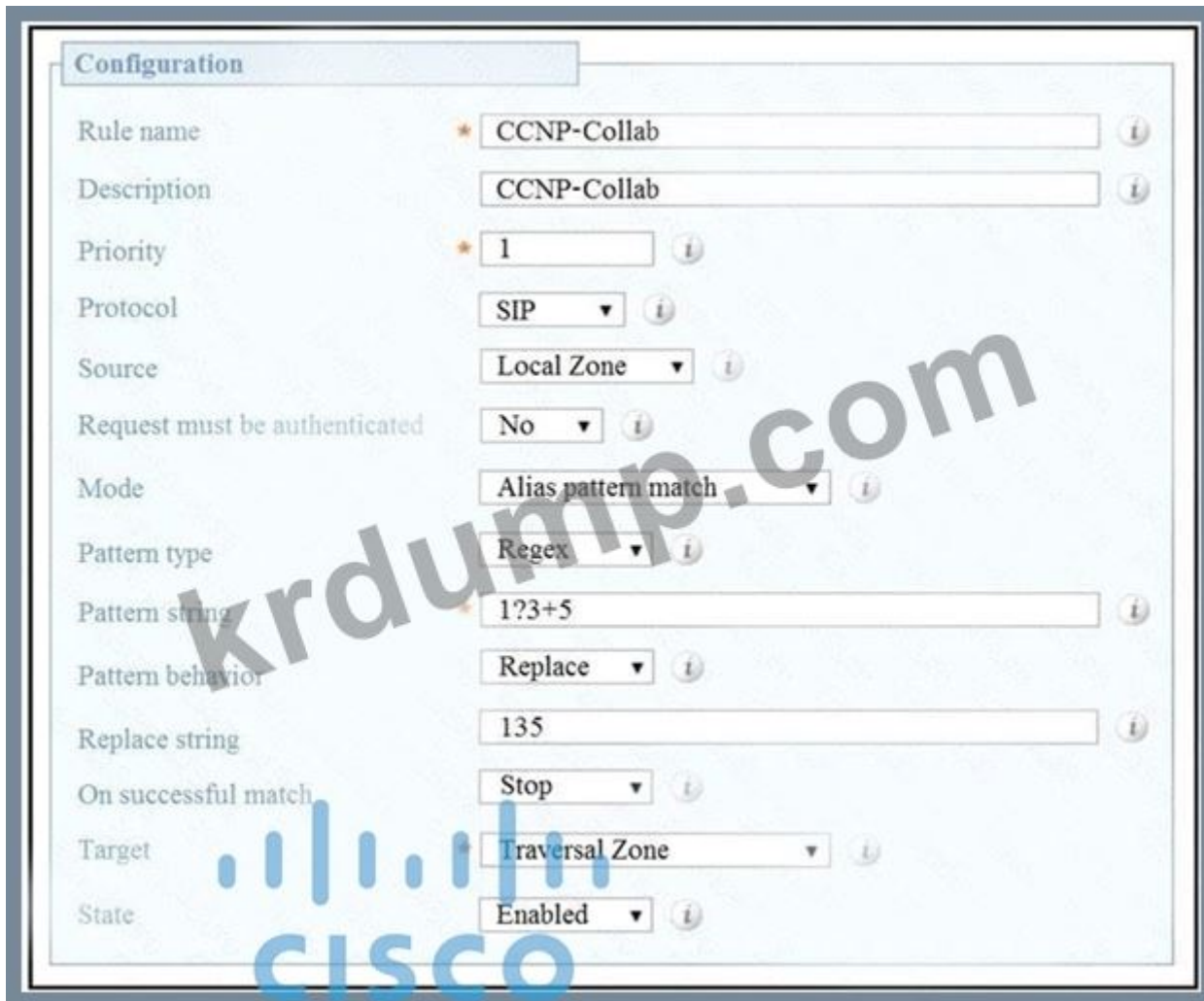
NEW QUESTION: 36

Cisco Expressway-E DMZ

- A.
- B.
- C.
- D.

Answer: (SHOW ANSWER)

NEW QUESTION: 37



□□□ □□ □□□□ □□□□□ □□ □□□ □□□ □ □□□□□ □□□□□?

- A. 13358□ 135□ □□□□ □□□ □□□ □□□□□.
- B. 13358□ 135□ □□□ □ □□ □□□□ □□□□□.
- C. 13358□ 135□ □□□ □ □□ □□□□ □□□□.
- D. 13358□ □□ □□□□ □□ □□□□□.

Answer: D ([LEAVE A REPLY](#))

NEW QUESTION: 38

Cisco Expressway □□□□ □□ Cisco□□ □□□□ □ □□(□□)□ □□□□□?

- A. 2048
- B. 1024
- C. 8192
- D. 4096

Answer: D ([LEAVE A REPLY](#))

NEW QUESTION: 39

□□□ □ □□ □□□ □□□□ □□ □ □□ □□ □ □□ □□ □□□□□? (2□□ □□□□□.)

- A. Jabber □□□□□□ □□ □□ □□ CA □□ □□□□ □□□ □ □□□□.
- B. Expressway Edge□ □□ CA □□ □□□□ □□□□ □□□.

- A. 8443 _collab-edge
- B. 5061 _cisco-uds-edge
- C. 5061 _collab-edge
- D. 8443 _cisco-uds

Answer: A (LEAVE A REPLY)

https://www.cisco.com/c/en/us/td/docs/voice_ip_comm/expressway/config_guide/X12-5/exwy_b_mra-expressw

300-820 DumpTop 300-820! DumpTop
 300-820, DumpTop 300-820
 . DumpTop 300-820

<https://www.dumptop.com/Cisco/300-820-dump.html> (210 Q&As Dumps, **30%OFF** Special Discount: **KrDump**)

NEW QUESTION: 47



- A. 413@exp-name.exp.domain:<port> 413@exp.domain
- B. 4.3@exp-name.exp.domain:<port> 1@exp.domain
- C. 4123@exp-name.exp.domain:<port> 1@exp.domain
- D. 4123@exp-name.exp.domain:<port> 4123@exp.domain

Answer: D (LEAVE A REPLY)

NEW QUESTION: 48

IP
 IP

- A. NAT ALG is used to protect NAT devices from being spoofed by external hosts.
- B. NAT ALG is used to protect NAT devices from being spoofed by internal hosts.
- C. NAT ALG is used to protect NAT devices from being spoofed by both internal and external hosts.
- D. NAT ALG is used to protect NAT devices from being spoofed by external hosts and to protect internal hosts from being spoofed by external hosts.

Answer: C (LEAVE A REPLY)

NAT ALG is used to protect NAT devices from being spoofed by both internal and external hosts. NAT ALG is used to protect NAT devices from being spoofed by external hosts and to protect internal hosts from being spoofed by external hosts.

NEW QUESTION: 49

Cisco UCM IM and Presence API is used to integrate Cisco Webex with Cisco UCM. Which of the following is a valid API endpoint?

- A. "https://api.cisco.com/ucm/imandpresence" is a valid API endpoint.
- B. "https://api.cisco.com/ucm/imandpresence/v1" is a valid API endpoint.
- C. "https://api.cisco.com/ucm/imandpresence/v2" is a valid API endpoint.
- D. "https://api.cisco.com/ucm/imandpresence/v3" is a valid API endpoint.

Answer: A (LEAVE A REPLY)

NEW QUESTION: 50

Which of the following is a valid API endpoint?


```

Module="network.ldap" Level="INFO": Detail="Authentication credential found
in directory for identity: expresswayturn"

Module="developer.nomodule" Level="WARN"
CodeLocation="ppcmains/sip/sipproxy/
SipProxyAuthentication.cpp(686) " Method="SipProxyAuthentication::
checkDigestSAResponse" Thread="0x7a2485cb0700": calculated response does not
match supplied response,
calculatedResponse=769c8f438b71eebdf28b61ab1dc9f5e9,
response=319a0bb365dccb98c1bb7b3ce350f6cc

Event="Authentication Failed" Service="SIP" Src-ip="10.1.1.161"
Src-port="25713" Detail="Incorrect authentication credential for user"
Protocol="TLS" Method="OPTIONS" Level="1"

```

- Cisco Jabber □ □□ □ □□ □□□□ □□□□ □□□□□ Cisco Unified Communications Manager
- □□□ □ □□□□. □□ □□□ Expressway Edge □□ □□□□□□□.
- □□□ □□□□□ □□ □□□ □□□ □□□?
- A. SIP □□□□ Expressway Core □ □□□□□□ □□□□□.
- B. □□ □□□ □□□□ □□ □□□ □□□□ □□□ □□□□□.
- C. □□ □□□ □□□□ □□□□□□ □□□□□.
- D. _cisco-uds SRV □□□□ □□□□□□ □□□□□.

Answer: C (LEAVE A REPLY)

NEW QUESTION: 52

example.com □□□ □□□ □□□ □□ □□□□□.

SIP □ H.323 □□□ □□□ □ □□ SRV □□□□ □□□□□? (2□□ □□□□□.)

- A. _sips._tcp.example.com
- B. _sips._udp.example.com
- C. _h323ls._udp.example.com
- D. _h323ls._tcp.example.com
- E. _collab-edge._tls.example.com

Answer: (SHOW ANSWER)

Expressway □□ □□□□ sip(RFC 3263) □ H.323 □ □□ DNS SRV □□ □□□ □□□ □□□□.

_sips._tcp.<□□□.□□□□ □□.□□□□>

_sip._tcp.<□□□.□□□□ □□.□□□□>

_sip._udp.<full.qualified.domain> - □□ □□□□ □□□□ □□□ □□□ □□ □□□□ □□□□□.

_h323ls._udp.<full.qualified.domain> - LRQ □ □□ UDP □□(RAS) □□□

_h323cs._tcp.<full.qualified.domain> - H.323 □□ □□□

□□□□□ □□□□ □□□□ sip(RFC 3263) □ H.323 □ □□ DNS SRV □□ □□□ □□□ □□□□.

_sips._tcp.<□□□.□□□□ □□.□□□□>

_sip._tcp.<□□□.□□□□ □□.□□□□>

_sip._udp.<full.qualified.domain> - □□ □□□□ □□□□ □□□ □□□ □□ □□□□ □□□□□.

_h323ls._udp.<full.qualified.domain> - LRQ □ □□ UDP □□(RAS) □□□

NEW QUESTION: 55

□□□□ □□□□□.

```
Expressway-C Traversal Zone:  
SIP: Failed to connect to 192.168.1.6:7001  
  
Expressway-C Event Log shows the following:  
2019-10-23T11:01:51.925-04:00 : Event="Outbound TLS Negotiation Error" Service="SIP" Src-ip="192.168.1.5" Src-port="27204"  
Dst-ip="192.168.1.6" Dst-port="7003" Detail="tlsv1 alert unknown ca"  
Protocol="TLS" Common-name="amer-expressway01.example.com" Level="1" UTCTime="2019-10-23 15:01:51,923"  
  
Expressway-C server certificate shows the following decoded output:  
  
Certificate:  
Data:  
  Version: 3 (0x2)  
  Serial Number: 1 (0x1)  
  Signature Algorithm: sha256WithRSAEncryption  
  Issuer: O=Temporary CA fce4028e-92ba-4cbc-9e71-08b959888af4, OU=Temporary CA fce4028e-92ba-4cbc-9e71-08b959888af4,  
  CN=Temporary CA fce4028e-92ba-4cbc-9e71-08b959888af4
```

Expressway-C □ Expressway-E □ B2B □□□□□ □□□□ □□□ Expressway-E □□□ TLS □□□□ □□
□□ □□□□. □□ □□□ Expressway-C □ □□□□ □□□□. B2B □ Expressway-C □ Traversal Client □
□□ □□ 1 □□□□ □□ □□□ □□□ □□□□□.
□ □□□ □□□□□ □□ □□□ □□□ □□□?
A. □□ □□□□ □□□ Expressway-C □ □□ □□□□ □□□□□.
B. TCP □ □□□□ Expressway-C □□ □□□□□ □□ □□ □□□□□ □□□□□.
C. □□ □□□□ □□□ Expressway-C □□ □□□□ □□□□□.
D. Expressway-E □ □□□□ □□□ □□□ □□□□ Expressway-C □□ □□□□□ □□ □□ 1 □□□□ □□
□□□.

Answer: D (LEAVE A REPLY)

NEW QUESTION: 56

□□□□ □□□□□.

D. SDP m-□□

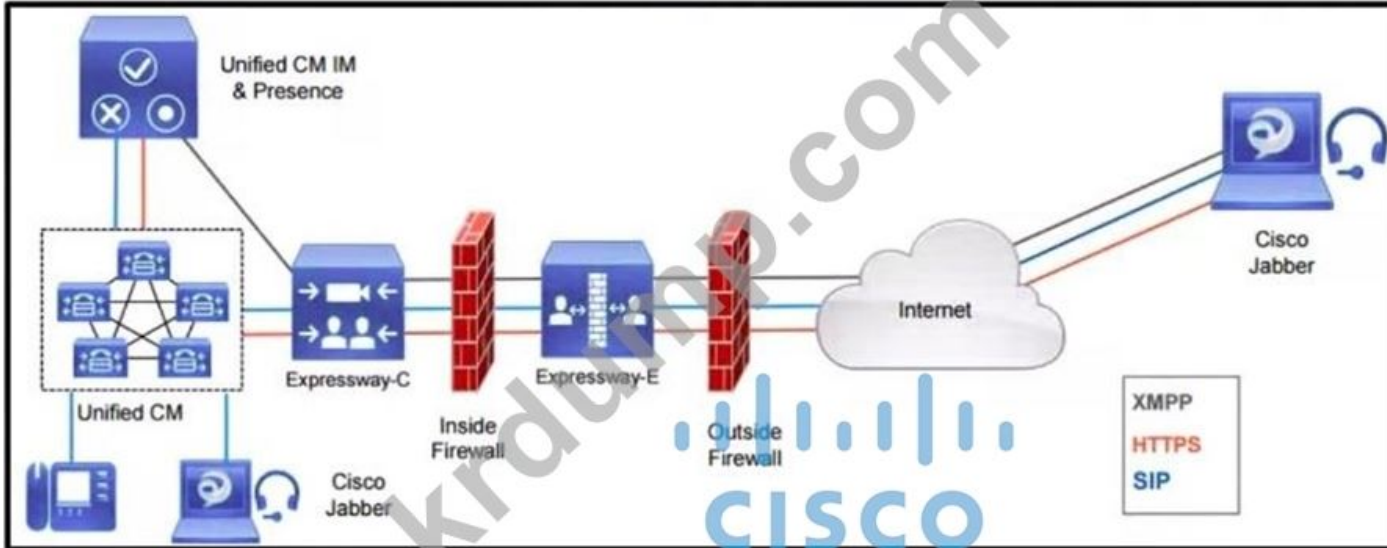
Answer: (SHOW ANSWER)

□□

https://www.cisco.com/c/dam/en/us/td/docs/voice_ip_comm/expressway/config_guide/X8-5/Cisco-Expressway-

NEW QUESTION: 59

□□□□ □□□□□.



□□□□ □□ □□□□□ □□ □□□□ □□□ □□□□ □□□□?

A. HTTPS(C□ E □□□□ SSH□ □□ □□□□): TCP 2222

B. XMPP TCP 5222

C. SIP TCP 5061

D. □□□: UDP 36000~36011

Answer: D (LEAVE A REPLY)

NEW QUESTION: 60

□□□□ □□□□□.

```
Module="network.ldap" Level="INFO": Detail="Authentication credential found
in directory for identity: expresswayturn"

Module="developer.nomodule" Level="WARN"
CodeLocation="ppcmains/sip/sipproxy/
SipProxyAuthentication.cpp(686)" Method="SipProxyAuthentication::
checkDigestSAResponse" Thread="0x7a2485cb0700": calculated response does not
match supplied response,
calculatedResponse=769c8f438b71eebdf28b61ab1dc9f5e9,
response=319a0bb365dccf98c1bb7b3ce350f6cc

Event="Authentication Failed" Service="SIP" Src-ip="10.1.1.161"
Src-port="25713" Detail="Incorrect authentication credential for user"
Protocol="TLS" Method="OPTIONS" Level="1"
```

□□□ Cisco Jabber□ □□□ □ □□ □□□□ □□□□ □□□□□ Cisco Unified Communications Manager

□ □□□ □ □□□□. □□ □□□ Expressway Edge□□ □□□□□□□□.

□ □□□ □□□□□ □□ □□□ □□□ □□□?

- A. _cisco-uds SRV □□□□ □□□□□□ □□□□□.
- B. □□ □□□ □□□□ □□□□□□ □□□□□.
- C. □□ □□□ □□□□ □□ □□□ □□□□ □□□ □□□□□.
- D. SIP □□□□ Expressway Core□ □□□□□□ □□□□□.

Answer: B ([LEAVE A REPLY](#))

NEW QUESTION: 61

□□□□□ Cisco Jabber Cloud □□□ □□ □□□□ □□□□□ □□□ □□□□ □□□?

- A. Cisco Webex □□ □□
- B. Cisco UCM
- C. Cisco Webex □□□□ □□□
- D. Cisco Unified IM and Presence □□

Answer: A ([LEAVE A REPLY](#))

https://www.cisco.com/c/en/us/td/docs/voice_ip_comm/jabber/12_6/cjab_b_cloud-and-hybrid-deployments-cisco-jabber-12-6/cjab_b_cloud-and-hybrid-deployments-cisco-jabber-12-6_chapter_0101.html

300-820 □□ □□□ □□□□□ □□ DumpTop □□ □□□□ □□□ 300-820 □□! DumpTop □ □□
300-820 □□ □□□ □□□□□□, DumpTop 300-820 □□ □□□ □□□□□□□□ □□□ □□□□□□□
□. □□□□ □□□ □□□□□ □□ DumpTop 300-820 □□□ □□□□□.

<https://www.dumpst.com/Cisco/300-820-dump.html> (210 Q&As Dumps, **30%OFF** Special Discount: **KrDump**)

NEW QUESTION: 62

□□ IM and Presence □□□□□ □□□ □□□□□ □□□ □□□ □□□□ □□□ □□ □□ □□ □□ □ □□ □□□□□?

- A. IM and Presence □□□□ □□□□ □□□□ □□□□ □ □□□ □□□□□ □□□ □□□.
- B. □□ IM and Presence □□□□□□ Intercluster Lookup Service□ □□□□ □□□.
- C. IM and Presence □□□ □□□□□□ □□ □□ □□□□ □□□□□□ □□□ □□□.
- D. AXL □□□□ □ IM and Presence □□□□□ □□□□□□ □□□□□□ □□□.

Answer: A ([LEAVE A REPLY](#))

NEW QUESTION: 63

Cisco Webex □□□□□ □□□ □□ □□□ DMZ □ □□ □□□□□ □□□ □ □□□□.

- A. Webex Cloud□ □□□ □□ DMZ □□ □□ □□□ □□□□□ □□□ □□□□ □□ □□ □□ □□ □□ □□ □□□□□.

- B. □□□ □
- C. □□□□
- D. □□

Answer: D ([LEAVE A REPLY](#))

NEW QUESTION: 70

□□□□ Expressway □□□□□ □□□□ □ □□ □□□ □□□□□?

- A. □□□□□ □ Expressway □□□ □□□ □□□ □□□□□.
- B. □ Expressway □□□ □□ Expressway □□□□□□ □□□□□□□□.
- C. □□□□□□ □ Expressway □□□ □□□□□.
- D. □□ Expressway □□□ □□□□□ □□□□□.

Answer: C ([LEAVE A REPLY](#))

NEW QUESTION: 71

Cisco □□ □□□□□□ □□□□ □□ □□□□ □□□□ □□□□.
 □□ □ □□□ □□□ NAT ALG□ □□□ □ □□□□ □□ □□ □ □□□ □□□□□?

- A. □□ □□□ □□ □□ □□□ □□□ □□□ □ □□□□.
- B. NAT ALG□ □□□□ □□ □□□□ □□□ □□□ □ □□□□.
- C. NAT ALG□ □□ □□□ □□□ □□□□□□.
- D. □□ □□□ □□ □□□ □□ □□□ □□□□ □□ □□ □□□ □□□ □ □□□□.

Answer: B ([LEAVE A REPLY](#))

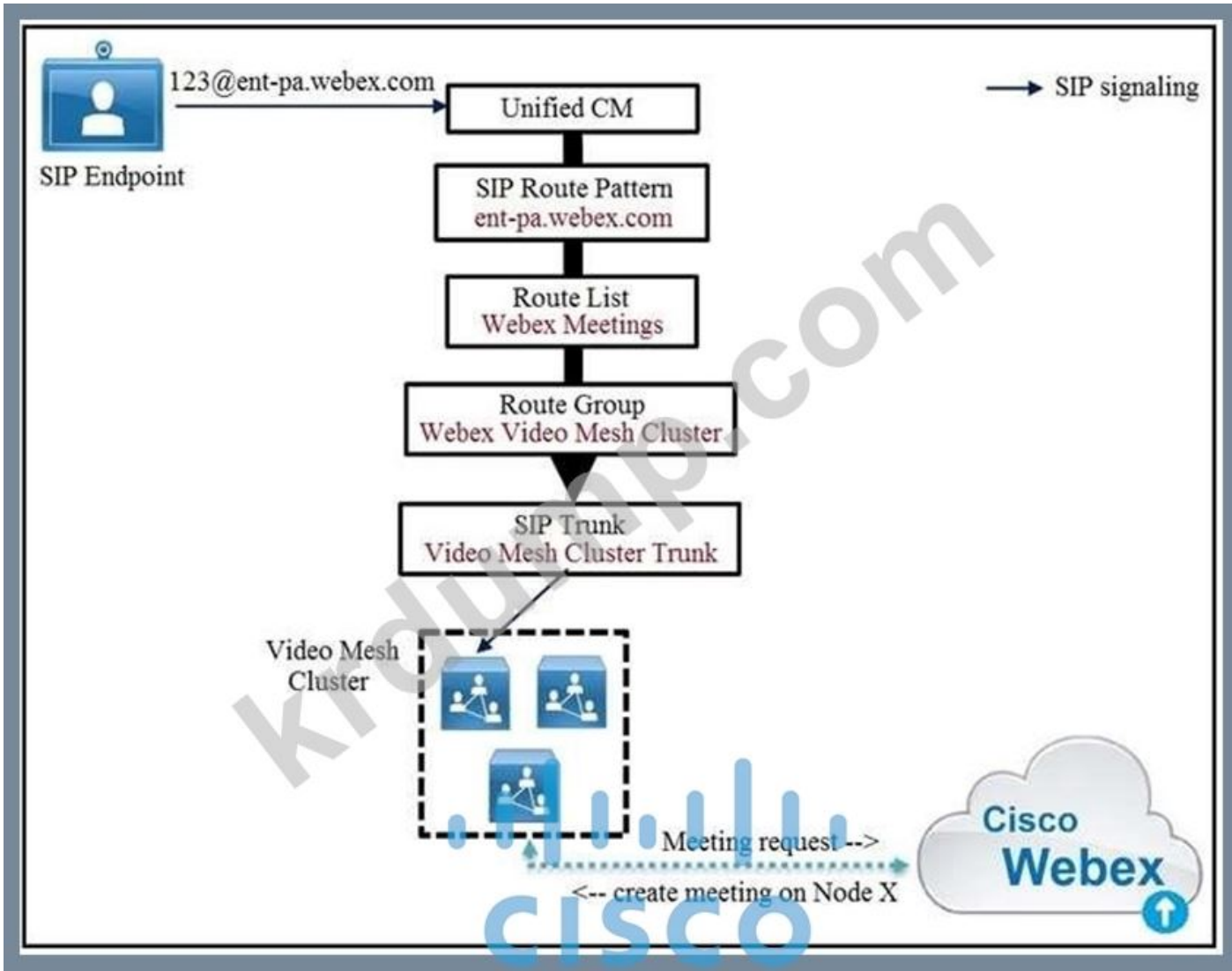
NAT ALG□ □□□ ALG□ □□□□□ NAT ALG□ □□□ □□ □□□□ □□□ □□□ □□(□□)□□□.
 NAT ALG□ □□□□ □□ □□□□ □□□ □□□ □ □□□□.

https://www.cisco.com/c/en/us/td/docs/voice_ip_comm/cucm/srnd/collab11/collab11/security.html

[https://www.cisco.com/c/en/us/td/docs/voice_ip_comm/expressway/config_guide/X14-](https://www.cisco.com/c/en/us/td/docs/voice_ip_comm/expressway/config_guide/X14-0/basic_config/exwy_b_cisco-expressway-e-and-expressway-c-basic-configuration-deployment-guide-x14-0/exwy_m_advanced-networking-deployments.html)

[0/basic_config/exwy_b_cisco-expressway-e-and-expressway-c-basic-configuration-deployment-guide-x14-0/exwy_m_advanced-networking-deployments.html](https://www.cisco.com/c/en/us/td/docs/voice_ip_comm/expressway/config_guide/X14-0/basic_config/exwy_b_cisco-expressway-e-and-expressway-c-basic-configuration-deployment-guide-x14-0/exwy_m_advanced-networking-deployments.html)

NEW QUESTION: 72



□□□□ □□□□□. Cisco Unified Communications Manager □ Webex Meetings □□ □□ □□ □□ □□ □□ □□ □□ □□□□□ □□□ □□□□□□. □□□ □□ □□□□□ □□#1□ □□□ □□□□□ □□ □□ □□□□□ □□□□ □□ □□□□ □□□□ □□ □□□□ □□□□ □□ □□□ □□□□.

- A. □□□□□ □□ □□□ □□□□ □ □□□ □□ □□ □□□□ □ □□□□□ □□□□□.
- B. □□□ □□ □□□□.
- C. □□□□□ □□ □□□ □□□□□ Webex □ □□□ □□□ □□ □□ □□□ □□□□□ □ □□□□□□ □□ □□□.
- D. □□□ □□□□□□.

Answer: C (LEAVE A REPLY)

NEW QUESTION: 73

□□□□ □□□□□.

Transforms							
Priority	State	Description	Pattern	Type	Behavior	Replace	
<input type="checkbox"/>	1	Enabled	Strip Domain from all calls	(.*)@(.*)	Regex	Replace	11
<input type="checkbox"/>	2	Enabled	add pod1.local domain to all requests	(.*)	Regex	Replace	11@pod1.local

Search rules											
Priority	Rule name	Protocol	Source	Mode	Pattern type	Pattern string	Pattern behavior	On match	Target	SIP variant	Enabled
1	Route all Calls to Local Zone	Any	Any	Any alias				Continue	LocalZone	Any	<input checked="" type="checkbox"/>

Search history				
Search type	Source	Destination	SIP variant	Status
SIP (INVITE)	jabberuser@pod1.local	sip.endpointc@pod1.local	Standards-based	Not found
SIP (INVITE)	jabberuser@pod1.local	sip.endpointb@pod1.local	Standards-based	Not found
SIP (INVITE)	jabberuser@pod1.local	sip.endpointa@pod1.local	Standards-based	Not found

- A. The search rule "Route all Calls to Local Zone" is configured to route all calls to the local zone. This rule is applied to all calls, regardless of the source or destination. The search rule is applied to all calls, regardless of the source or destination. The search rule is applied to all calls, regardless of the source or destination.
- B. The search rule "Route all Calls to Local Zone" is configured to route all calls to the local zone. This rule is applied to all calls, regardless of the source or destination. The search rule is applied to all calls, regardless of the source or destination. The search rule is applied to all calls, regardless of the source or destination.
- C. The search rule "Route all Calls to Local Zone" is configured to route all calls to the local zone. This rule is applied to all calls, regardless of the source or destination. The search rule is applied to all calls, regardless of the source or destination. The search rule is applied to all calls, regardless of the source or destination.
- D. The search rule "Route all Calls to Local Zone" is configured to route all calls to the local zone. This rule is applied to all calls, regardless of the source or destination. The search rule is applied to all calls, regardless of the source or destination. The search rule is applied to all calls, regardless of the source or destination.

Answer: A ([LEAVE A REPLY](#))

NEW QUESTION: 76

Cisco Expressway Core is used to provide a secure, scalable, and reliable communication environment. Which of the following is a benefit of using Cisco Expressway Core?

- A. It provides a secure, scalable, and reliable communication environment.
- B. It provides a secure, scalable, and reliable communication environment.
- C. It provides a secure, scalable, and reliable communication environment.
- D. It provides a secure, scalable, and reliable communication environment.

Answer: B ([LEAVE A REPLY](#))

300-820 dumps are available at <https://www.dumpst.com/Cisco/300-820-dump.html> (210 Q&As Dumps, 30%OFF Special Discount: **KrDump**)

NEW QUESTION: 77

□□□□ □□□□□.

Edit transform

Configuration

Priority: 1

Description: CCNPCollab

Pattern type: Regex

Pattern string: (([^0-7])(d{3,5}))

Pattern behavior: Replace

Replace string: \1\2@ccnpcollab.com

State: Enabled

Save Delete Cancel

□□ 88514□ □□□ □□□ □□□ □□□□□?

- A. 88514@ccnpcollab.com
- B. 88515@ccnpcollab.com
- C. 88513@ccnpcollab.com
- D. 98851@ccnpcollab.com

Answer: (SHOW ANSWER)

NEW QUESTION: 78

NAT□ SIP □□□ □□ SDP□□ □□ □□□ □□□□□?

- A. NAT □□□□ □□ □□ □□□ □□ □□ □□□ MTU□ □□□ □ □□□□.
- B. □□□□□□ NAT □□ □□□ □□□ □□□ □□□ □□□□ □□□ □□ □ □□□□.
- C. □□ □□□ □□□ □□□ IP □□□ □□□□ □ □□ □□ □□□ □ □□□□.
- D. SDP□ □□□ □□□ □□ NAT □□ □□ □□ □□□□□□□□ □□□□□.

Answer: C (LEAVE A REPLY)

□□□ NAT□ □□□□ □□ □□ □□□□ □□□ □□□ SIP □□□ □□□□ □□□□ □□□□(□□ □□
Fortinet□□ □□ □□□□□ VIP □□□ □□□□).

NEW QUESTION: 79

□□□□ □□□□□.

```
XmppSDK.dll #0, 201, Recv:<iq id='uid:527a7fe7:00000cfe:00000000' type='error'><bind xmlns='urn:ietf:params:xml:ns:xmpp-stanzas' /></error></iq>  
XmppSDK.dll #0, CXmppClient::onResourceBindError  
XmppSDK.dll #0, 39, CTriClient::HandleDisconnect, reason:16
```

Cisco Jabber □□□ □□□ □□□□ □□ □ □□ □□ □□□□ □□□□□. Jabber □□□□□□ □□□□□ □□□ □□□ □□□□□?

- A. Cisco Unified Communications Manager □□ □□
- B. XMPP □□□ □□
- C. □□□ □□□ □□ □□
- D. □□□ □□ □□

Answer: B ([LEAVE A REPLY](#))

□□

https://www.cisco.com/c/dam/en/us/td/docs/voice_ip_comm/expressway/config_guide/X8-5/Mobile-Remote-Ac

NEW QUESTION: 80

Expressway □□□ □□□ □□ □ □□ □□ □ □□ □□ □□□□□? (2□□ □□□□□.)

- A. Expressway Control□ DMZ□ □□□ □□ □□□□□.
- B. Expressway Edge□ □□□ DMZ □□□□□ □□□□□ □□□.
- C. Cisco Unified Communications Manager □□□ □□ □□ □□ □□□□□□ □ □□□□.
- D. □□ □□□□□□ □□ □□□ □□□ □ □□ □□□□ □□□ □ □□□□.
- E. □ Expressway Edge □□□□□ □□ NAT□ □□□ □ □□□□.

Answer: B,D ([LEAVE A REPLY](#))

□□

https://www.cisco.com/c/dam/en/us/td/docs/voice_ip_comm/expressway/config_guide/X8-10/Cisco-Expressway

NEW QUESTION: 81

□□□□ □□□□□.

`(\d{3}) (\d{3}) (\d{3}) (\d{3})`

□□□□ □□□□ □ □□□ □□□□□? (2□□ □□□□□.)

- A. d209d165d200d224
- B. 2091652010224
- C. 209165200224
- D. d20d16d20d22
- E. 209165200225

Answer: ([SHOW ANSWER](#))

NEW QUESTION: 82

Cisco Expressway□□ □□ □□□ □□□ □□□□□ □□□□□ SIP □□□ □□□ □□□ □□□□□?

- A. □□□ □□
- B. □□
- C. □□ □□□□
- D. □□

Answer: D (LEAVE A REPLY)

NEW QUESTION: 83

Cisco Expressway □□□□ □□ Cisco□□ □□□□ □ □□(□□)□ □□□□□?

- A. 1024
- B. 2048
- C. 4096
- D. 8192

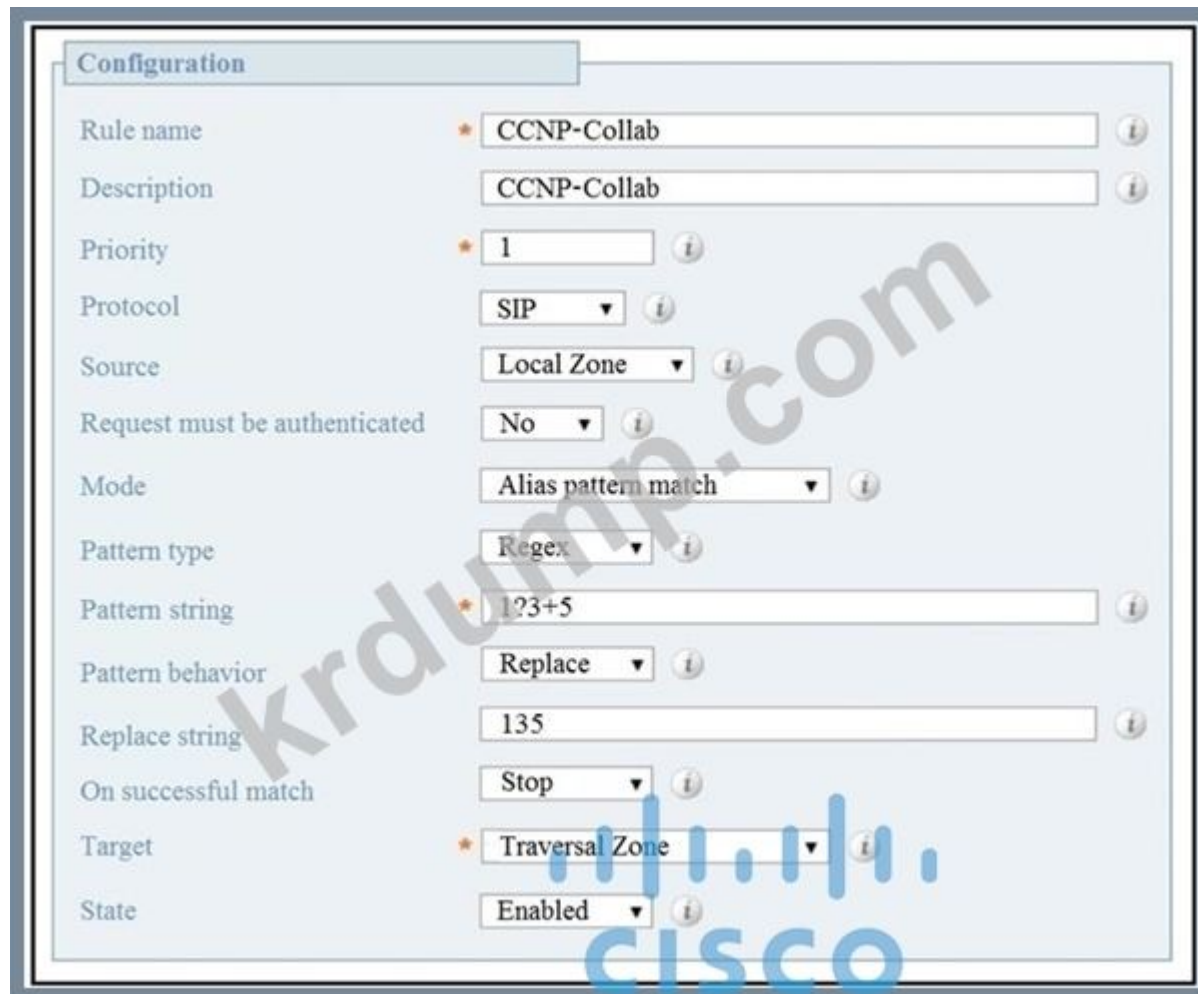
Answer: C (LEAVE A REPLY)

□□□□ 8192□□□ □ □□□ □□□□ □□ SIP TLS □□□ □□□□□ □□ □ □□□□. □ □□□ 4096 □□□ □□□□ □□□□ □□ □□□□.

https://www.cisco.com/c/dam/en/us/td/docs/voice_ip_comm/expressway/config_guide/X8-9/Cisco-Expressway-Certificate-Creation-and-Use-Deployment-Guide-X8-9.pdf

NEW QUESTION: 84

□□□□ □□□□□. □□□□ □□□□□ □□ □□□ □□□ □ □□ □□□ □□□□□. 13358□□ □□□□□?



- A. 13358□ 135□ □□□ □ □□ □□□□ □□□□□.
- B. 13358□ 135□ □□□□ □□□ □□□ □□□□□.
- C. 13358□ 135□ □□□ □ □□ □□□□ □□□□□.

D. 13358□ □□ □□□□ □□ □□□□□.

Answer: C (LEAVE A REPLY)

NEW QUESTION: 85

□□□□ □□□□□.

Expressway-C Traversal Zone:
SIP: Failed to connect to 192.168.1.6:7001

Expressway-C Event Log shows the following:

```
2019-10-23T11:01:51.925-04:00 : Event="Outbound TLS Negotiation Error" Service="SIP" Src-ip="192.168.1.5" Src-port="27204"
Dst-ip="192.168.1.6" Dst-port="7003" Detail="tlsv1 alert unknown ca"
Protocol="TLS" Common-name="amer-expressway01.example.com" Level="1" UTCTime="2019-10-23 15:01:51,923"
```

Expressway-C server certificate shows the following decoded output:

Certificate:

Data:

Version: 3 (0x2)

Serial Number: 1 (0x1)

Signature Algorithm: sha256WithRSAEncryption

Issuer: O=Temporary CA fce4028e-92ba-4cbc-9e71-08b959888af4, OU=Temporary CA fce4028e-92ba-4cbc-9e71-08b959888af4,
CN=Temporary CA fce4028e-92ba-4cbc-9e71-08b959888af4

Expressway-C □ Expressway-E □ B2B □□□□□ □□□□ □□□ Expressway-E □□□ TLS □□□□ □□
□□ □□□□. □□ □□□ Expressway-C □ □□□□ □□□□. B2B □ Expressway-C □ Traversal Client □
□□ □□ 1 □□□□ □□ □□□ □□□ □□□□□.

□ □□□ □□□□□ □□ □□□ □□□ □□□?

A. □□ □□□□ □□□ Expressway-C □ □□ □□□□ □□□□□.

B. TCP □ □□□□ Expressway-C □□ □□□□□ □□ □□ □□□□□ □□□□□.

C. □□ □□□□ □□□ Expressway-C □□ □□□□ □□□□□.

D. Expressway-E □ □□□□ □□□ □□□ □□□□ Expressway-C □□ □□□□□ □□ □□ 1 □□□□ □□
□□□.

Answer: A (LEAVE A REPLY)

NEW QUESTION: 86

Expressways□□ □□ □□□ □□□ □ □□ □□□ □□□□ □□□?

A. □□ CPL

B. □□

C. □□ CPL, □□ □□□ □ □□

D. □□ CPL

Answer: (SHOW ANSWER)

NEW QUESTION: 87

example.com□□□ □□□ □□□ □□ □□□□□.

SIP □ H.323 □□□ □□□ □ □□ SRV □□□□□ □□□□□? (2□□ □□□□□.)

A. _sips._tcp.example.com

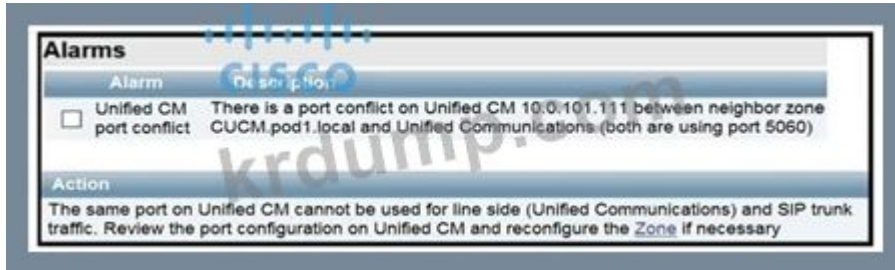
B. _sips._udp.example.com

□□

https://www.cisco.com/c/en/us/td/docs/voice_ip_comm/cloudCollaboration/spark/hybridservices/messageservice

NEW QUESTION: 90

□□□□ □□□□□. □□□ □ □□ □□□□ □□ B2B □□□ □□□□ □□□ □□□□ □□□□.



□□□□ Expressway-C□ □□□ □□ □□□□ □□□□□. □ □□□ □□□□□ □□□□ □□ □□ □□□ □□□ □□□□?

A. SIP TCP□ □□ Expressway-C□ □□ □□□ □□ □□ □□ □□ □□□□ □□□□ □□□.

B. SIP TLS□ □□ Expressway-C□ □□ □□□ □□□ □□ □□ □□□ □□□□□ □□□.

C. Expressway-C SIP □□□□ □□ Cisco UCM□ □□ □□□ 5060 □□ 5061 □□□ □□□ □□□□□ □□□.

D. Expressway-C SIP □□□□ □□ Cisco UCM□ □□ □□□ 5060 □□ 5061 □□□ □□□ □□□□□□ □□□□□ □□ □□ 5060□□, □□ SIP□ □□ 5061□ □□□□ □□□□.

Answer: C (LEAVE A REPLY)

<https://www.ciscolive.com/c/dam/r/ciscolive/emea/docs/2018/pdf/BRKUCC-2801.pdf>

NEW QUESTION: 91

Cisco Expressway □□□□ □□□ □ □□ □□□ □□□□□?

A. □□□ □□ □□□ □□□□ Expressway-E□ □□□□□.

B. Expressway-E□□□ □□ NAT□ □□□□□□.

C. Expressway-E□□ H.323 □□□ □□□□□□□.

D. Expressway-C□□ H.323 H.460.19 □□□□ □□□ □□□□□□.

Answer: B (LEAVE A REPLY)

□□

300-820 □□ □□□ □□□□□ □□ DumpTop □□ □□□□ □□□ 300-820 □□! DumpTop □ □□
300-820 □□ □□□ □□□□□□, DumpTop 300-820 □□ □□□ □□□□□□□□ □□□ □□□□□□□
 □. □□□□ □□□ □□□□ □□ DumpTop 300-820 □□□ □□□□□.

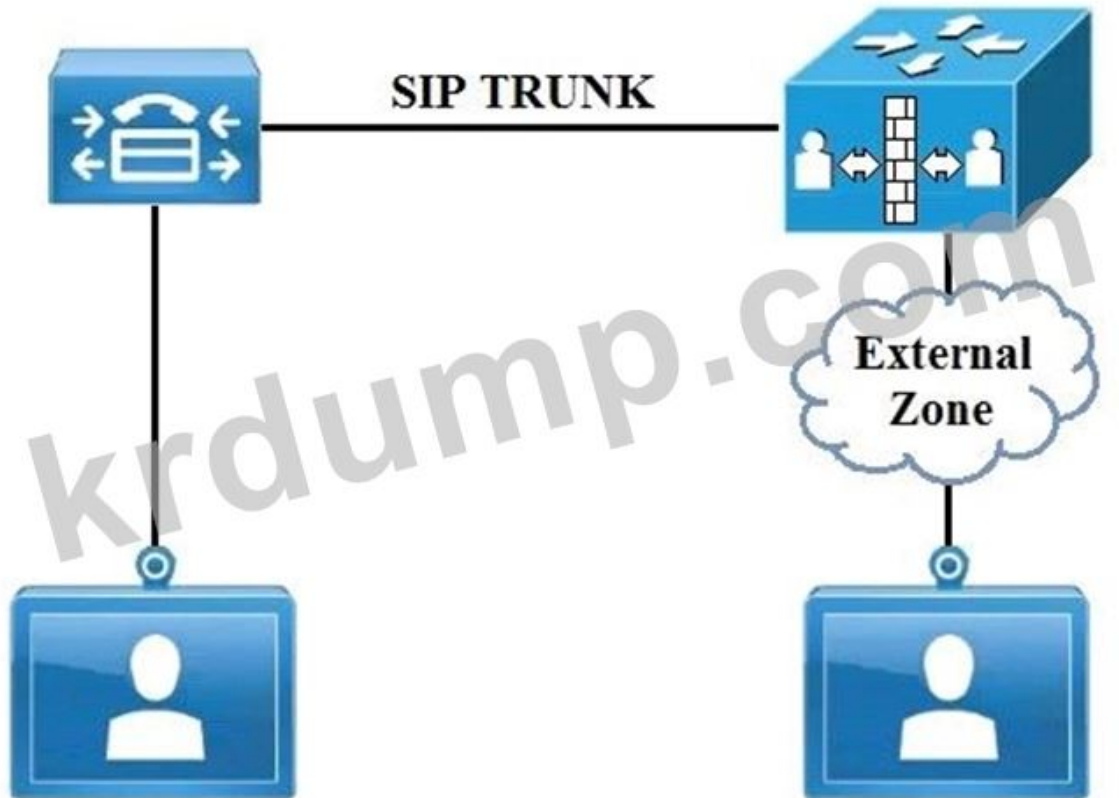
<https://www.dumptop.com/Cisco/300-820-dump.html> (210 Q&As Dumps, **30%OFF** Special Discount:

KrDump)

Cisco Unified
Communications
Manager

CISCO

Cisco
Expressway-C



SIP Endpoint A
1234@cucm.cisco.com

H.323 Endpoint B
5678@cisco.com

□□□□ SIP □□□ CUCM□ □□□□ H.323 □□□ VCS□ □□□□□. □□□ □□□ □□□□ □□□□□
□□□ □□□□□?

- A. □□ □□□□ SIP□ □□□□□□□□.
- B. □□ □□□ On□□ □□□□□.
- C. SIP □□□□□ A□ □□□□ cisco.com□□ □□□□□.
- D. □□ □□ □□□ □□□□□.

Answer: B (LEAVE A REPLY)

NEW QUESTION: 102

□□□□ □□□□□.

