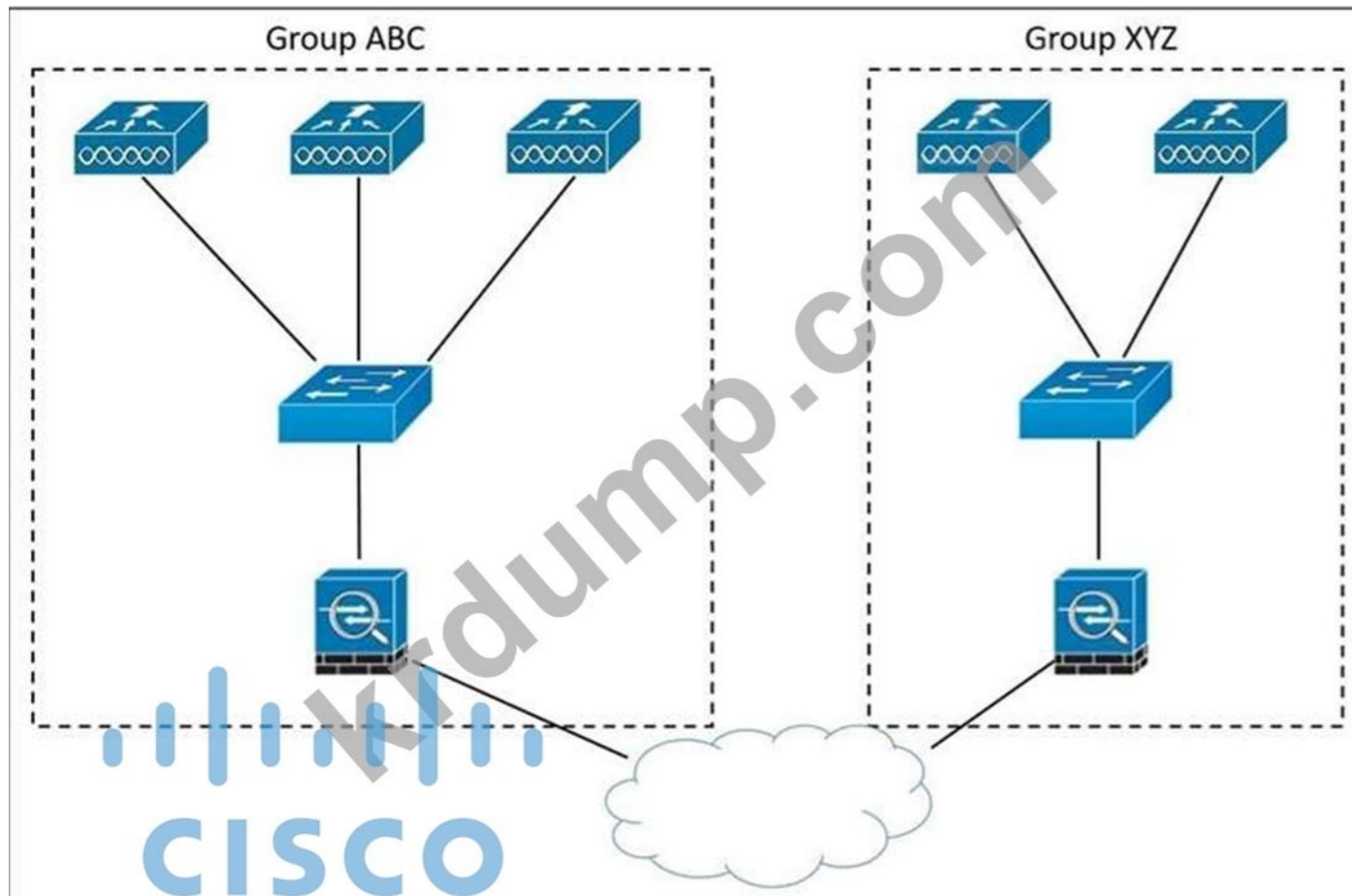


Cisco.300-425.v2023-10-09.q100

| | |
|---|--|
| □□□□: | 300-425 |
| □□□□: | Designing Cisco Enterprise Wireless Networks |
| □□□: | Cisco |
| □□ □□ □□□: | 100 |
| □□: | v2023-10-09 |
| # □□ □: | 1426 |
| # □□ □□□: | 990 |
| https://www.krdump.com/Cisco.300-425.v2023-10-09.q100.html | |

NEW QUESTION: 1

□□□□ □□□□□□.



□□□ □ □□□ □□□□ □□ □□□□. AP□ □□□ □□□ □□□ □□□ □□ □□□□□ □□□□□. IT □□ □□□□□□ □□ ABC□ □□□□□□ □□ XYZ□ □□□□□ □□□ □ □□□ □□□□□ □□□. □ □□□ □□□□□ □□ □□□ □□□□ □□□□ □□□□?

- A. □□□ □□
- B. □□ □□ □□
- C. □□□□ □□□
- D. mDNS □□□□□

Answer: A ([LEAVE A REPLY](#))

NEW QUESTION: 2

Which two Cisco 5508 LAN controllers support SSO? (Choose two.)

- A. Cisco 5508
- B. Cisco WLC 5508
- C. Cisco 5508
- D. Cisco WLC 5508
- E. Cisco WLC 5508

Answer: A,C ([LEAVE A REPLY](#))

Once SSO is enabled, the Standby WLC can be accessed via console connection or via **SSH** on the service port and on the redundant management interface.

NEW QUESTION: 3

Which two Ekahau products support GPS? (Choose two.)

- A. Ekahau
- B. Ekahau
- C. Ekahau
- D. GPS

Answer: ([SHOW ANSWER](#))

NEW QUESTION: 4

- A. RP
- B. Cisco WLC 50
- C. Cisco WLC
- D. SSO

Answer: (SHOW ANSWER)

- With Release 7.4, an HA-SKU secondary controller can be configured as a backup controller for N+1 HA. For example, the following can be used as an HA-SKU controller:
 - 5508 Series Standalone controller with 50 AP license

NEW QUESTION: 10

Band Select will impact the initial scan, steering clients towards 5 GHz

- A. RRM
- B. RRM
- C. Cisco
- D. RRM

Answer: A (LEAVE A REPLY)

Band Select will impact the initial scan, steering clients towards 5 GHz

NEW QUESTION: 11

AP failover priority

| General | Credentials | Interfaces | High availability | Inventory | Advanced |
|---------|-------------|------------|----------------------|----------------------------------|--------------|
| | | | Name | Management IP Address(Ipv4/Ipv6) | |
| | | | Primary Controller | WLC-PRIMARY | 192.168.1.11 |
| | | | Secondary Controller | WLC-SECONDARY | 10.42.98.11 |
| | | | Tertiary Controller | | |
| | | | AP Failover Priority | Low | |

AP failover priority is used to determine the order of controllers to be contacted for AP failover. The primary controller is always contacted first. If the primary controller is unreachable, the secondary controller is contacted, and so on. The failover priority is used to determine the order of controllers to be contacted for AP failover.

- A. AP failover priority is used to determine the order of controllers to be contacted for AP failover.
- B. AP failover priority is used to determine the order of controllers to be contacted for AP failover.
- C. DNS FQDN
- D. IP

Answer: A (LEAVE A REPLY)

NEW QUESTION: 12

AP transmit power is set to -65dBm

- A. AP transmit power is set to -65dBm

- B. □□ □□ □□
- C. □□□□□ □□ □□ □□
- D. □ □□ □□

Answer: C ([LEAVE A REPLY](#))

NEW QUESTION: 13

□□□□ □□□ □□ □□□ □□□□□ □□ □□□ □□□□□? (3□□ □□□□□.)

- A. PoE □□□
- B. □□□
- C. □□□ □□□
- D. □□ □□□
- E. □□
- F. □□□

Answer: A,C,D ([LEAVE A REPLY](#))

□□
https://www.cisco.com/c/en/us/td/docs/wireless/technology/mesh/81/design/guide/b_mesh_81/Site_Preparation_

NEW QUESTION: 14

□□□ □□ □□□□□ □□□□□□□□. □□□□□□ 5GHz □□□□□ □□□□□ □□□ □□□ □□□ □□ Cisco WLC □□ □□□ □□□□□?

- A. □□ □□
- B. RRM
- C. Cisco □□ □□□ □ □□
- D. □□ □□□

Answer: A ([LEAVE A REPLY](#))

NEW QUESTION: 15

□ □□□□□ □□□ □□□ □□ □□□□□□ □□□ □□ □□□□□ □□□□ □□□□. □□ □□□ □□□ □ □□ □□ □□□□□□ □□ □□□ □□□ □□□□□ □□ □□□□□□ □□□ □□□□?

- A. RF □□□ □□ □□ □□□□□□
- B. □□□□ □□ □□ □□□□ □□□□□□
- C. □□□□ □□ □□ □□□□ □□□□□□
- D. RF □□□ □□ □□ □□□□□□

Answer: ([SHOW ANSWER](#))

□□
With the proliferation of clients with varying wireless capabilities, it is important to survey for the 'worst' clients in order to ensure a consistent experience across all your clients once your wireless network is in production.

https://documentation.meraki.com/MR/WiFi_Basics_and_Best_Practices/Conducting_Site_Surveys_with_MR_A

NEW QUESTION: 16

□□ WLC□ □□□ □□□ □□□□ □□□□ □□□□□. AP□ □□ □□□□□ □□□ □□□ □□□□□. □□□□□ □□□□□ □□□ □□□ □□ □□ AP□ □□□□ □□□□ □□ □□□ □ □□□□ □□□□□?

- A. □□ □□□ AP □□ □□□□ □□ □□ □□□□
- B. □□□□ □□□ □□□ AP□ □□□ □□ □□ □□□□
- C. □□□ □□ □□ □□ CPU □□□□ □□ □□ □□□□
- D. □□□ AP □□ □□ □□ □□□□

Answer: D ([LEAVE A REPLY](#))

<https://mrncciew.com/2013/04/07/ap-failover/>

300-425 □□ □□□ □□□□□ □□ DumpTop □□ □□□□ □□□ 300-425 □□! DumpTop □ □□ **300-425** □□ □□□ □□□□□□, DumpTop 300-425 □□ □□□ □□□□□□□□ □□ □□□□□□□□. □□□□ □□□ □□□□ □□ DumpTop 300-425 □□□ □□□□□. <https://www.dumptop.com/Cisco/300-425-dump.html> (351 Q&As Dumps, **30%OFF Special Discount: KrDump**)

NEW QUESTION: 17

□□ □□□□□ □□ □□□ □□ □ □□□ □□□ □□ □□ □□□ □□ RF □□□ □□□□□ □□□. □□ □ □□ □□□ □□□ □□□? (□ □□□ □□□□□.)

- A. □□□□ WMM □□□□□ □□□□□.
- B. □ □□ □□□ □□ RF □□□□□ □□□□□.
- C. □ □□□ □□ FlexConnect □□□ □□□□□.
- D. □□ □□□□ AP □□□ □□□□□.
- E. □□□□□□ DTPC□ □□□□□□.

Answer: B,D ([LEAVE A REPLY](#))

NEW QUESTION: 18

□□□ □□ □□ □□□ SSID□ □□ □□□ □□□□ □□□□□. □□□ □□□ □□□□ □□ MPING□ □□ WLC□□ □□ WLC□ □□□□ □□□ □□□□□□□. □□□ □□□□ □□□ □□□ □□□?

- A. □□□ □□□□□ UDP □□ 16666□ □□□□□ □□□□ □□□ □□□□□.
- B. UDP □□ 97□□ □□□ □□□□□ □□□□□ □□□ □□□□□.
- C. □□□ □□□□□ TCP □□ 97□ □□□□ □□ □□□□□ □□□ □□□□□.
- D. □□□ □□□□□ TCP □□ 16666□ □□□□ □□ □□□□□ □□□ □□□□□.

Answer: ([SHOW ANSWER](#))

- UDP 16666 for tunnel control traffic
- IP Protocol 97 for user data traffic
- UDP 161 and 162 for SNMP

NEW QUESTION: 19

□□□ □□□□ □□□ □□ □□□ □□□□□. □□□ □□□□ □□□□□ □□□ □□□□ □□ □□□□□□ □□□□ □□□ AP□ □□□□ □□□ □□ □□□□□□. □ □□ □□□□□ □□ □□ □□ □□ □□□□□. □□□□□ □□ □□□ □□□□ □□□?

- A. □□ □□ □ □□ □□
- B. □□□□ □□
- C. □□□ 3 □□

D. 802.11r 2x2x2

Answer: B (LEAVE A REPLY)

https://www.cisco.com/c/en/us/td/docs/wireless/controller/technotes/80/hdx_final/b_hdx_dg_final/high_density_experience_features_added_in_release_8_0.html

NEW QUESTION: 20

Site surveys are one of the basic requirements when you deploy a WLAN, and you must always consider the Wi-Fi capabilities of the client devices or endpoints. Most smartphones and tablets support 802.11. However, generally, the smartphones and tablets have fewer antennas and lower data rates than laptops. In addition, most are not purpose-built for the enterprise WLAN market. Almost all smartphones and tablets support enterprise security policies. However, many of them do not support

- A. 802.11ac 2x2x2
- B. 802.11n 2x2x2
- C. 802.11g 2x2x2
- D. 802.11r 2x2x2
- E. 802.11a 2x2x2

Answer: (SHOW ANSWER)

Site surveys are one of the basic requirements when you deploy a WLAN, and you must always consider the Wi-Fi capabilities of the client devices or endpoints. Most smartphones and tablets support 802.11. However, generally, the smartphones and tablets have fewer antennas and lower data rates than laptops. In addition, most are not purpose-built for the enterprise WLAN market. Almost all smartphones and tablets support enterprise security policies. However, many of them do not support

NEW QUESTION: 21

When configuring a mobility group, all controllers must be configured with the same virtual interface IP address. Which of the following is the correct configuration?

- A. DNS WLC IP address is the same for all controllers.
- B. WLC IP address is the same for all controllers.
- C. DNS IP address is the same for all controllers.
- D. WLC IP address is the same for all controllers.

Answer: D (LEAVE A REPLY)

All controllers within a mobility group must be configured with the same virtual interface IP address.

NEW QUESTION: 22

Cisco Hyperlocation can locate a client within a 50-foot radius. What is the accuracy of Cisco Hyperlocation?

- A. 50%
- B. 20%
- C. 30%
- D. 40%

Answer: (SHOW ANSWER)

NEW QUESTION: 23

Which of the following is a requirement for Cisco Hyperlocation to be used with AP4800s? Cisco Hyperlocation requires the use of which of the following?

- A. 2x2x2 MIMO
- B. Cisco CMX SDK
- C. Cisco FastLocate SDK
- D. Cisco CMX SDK and Cisco FastLocate SDK.

Answer: C (LEAVE A REPLY)

NEW QUESTION: 24

Which of the following is the best WLAN signal strength, SNR, and throughput? (Choose two.)

- A. -67dBm, 20dB SNR, 1% throughput
- B. -67dBm, 20dB SNR, 5% throughput
- C. -67dBm, 25dB SNR, 1% throughput
- D. -70dBm, 30dB SNR, 10% throughput

Answer: C (LEAVE A REPLY)

<https://www.cisco.com/c/en/us/support/docs/wireless/5500-series-wireless-controllers/116057-site-survey-guidelines-wlan-00.html>

NEW QUESTION: 25

Which of the following are the best RF channels for 2.4GHz and 5GHz? (Choose two.)

- A. 1, 6, 11
- B. 1, 6
- C. 1, 6, 11, 16
- D. X, 1, 6
- E. 1, 6

Answer: B,E (LEAVE A REPLY)

1, 6

<https://www.ciscopress.com/articles/article.asp?p=2351131&seqNum=2>

NEW QUESTION: 26

Which of the following is the best configuration for N+1 HA for Cisco 5508 WLC? (Choose two.)

- A. RP, 5508 WLC, 50 AP license
- B. Cisco WLC, 50 AP license, 5508 WLC
- C. Cisco WLC, 50 AP license, 5508 WLC
- D. SSO, 5508 WLC, 50 AP license

Answer: B (LEAVE A REPLY)

- With Release 7.4, an HA-SKU secondary controller can be configured as a backup controller for N+1 HA. For example, the following can be used as an HA-SKU controller:
 - 5508 Series Standalone controller with 50 AP license

NEW QUESTION: 27

Which of the following is the best LAN interface for 802.11ac? (Choose two.)

- A. 802.11i
- B. 802.11ac

- C. 802.11r
- D. 802.11e

Answer: C (LEAVE A REPLY)

The 802.11r Fast Transition (FT) Roaming is an amendment to the 802.11 IEEE standards.

NEW QUESTION: 28

□□□ □□ □□ □□ □□□ □□ □□□□ □□□□. □□ □□□ □□ □□□ □□□□ □□□□□?

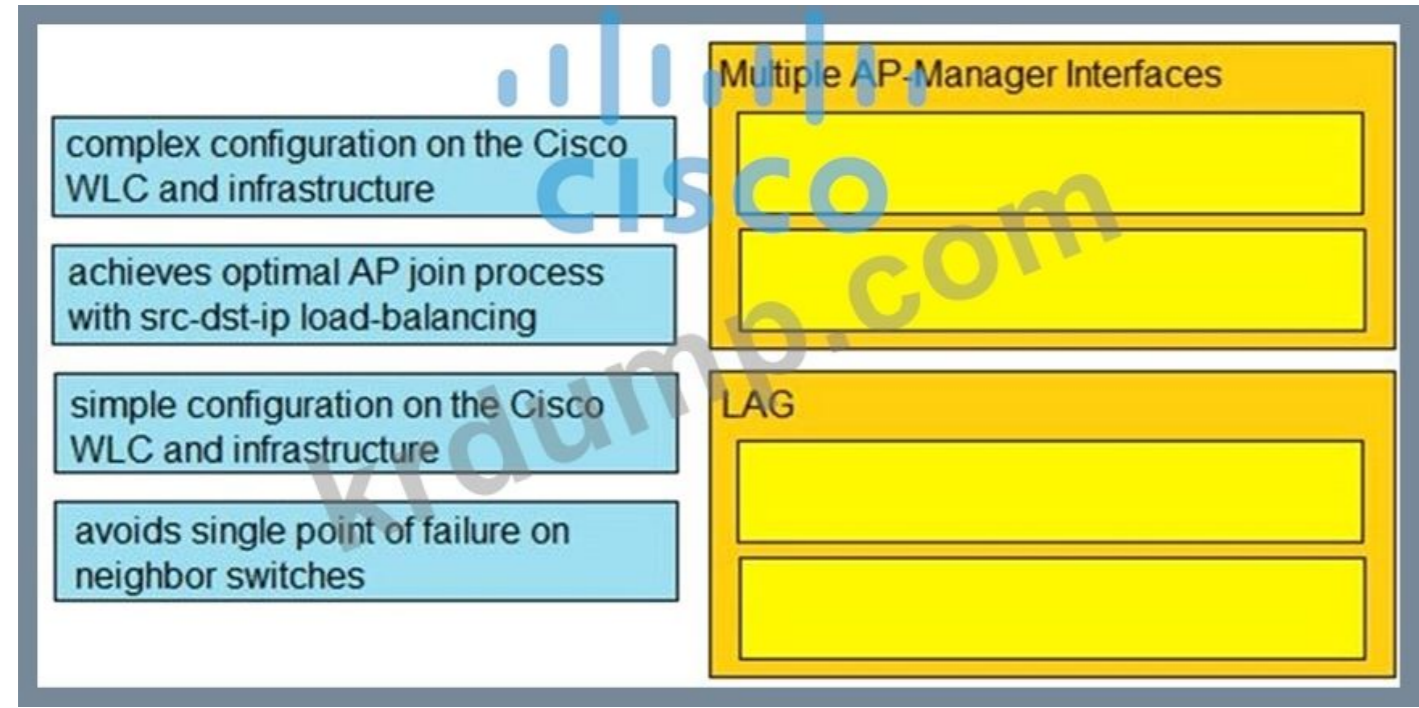
- A. □□
- B. AES
- C. WEP
- D. 3DES

Answer: B (LEAVE A REPLY)

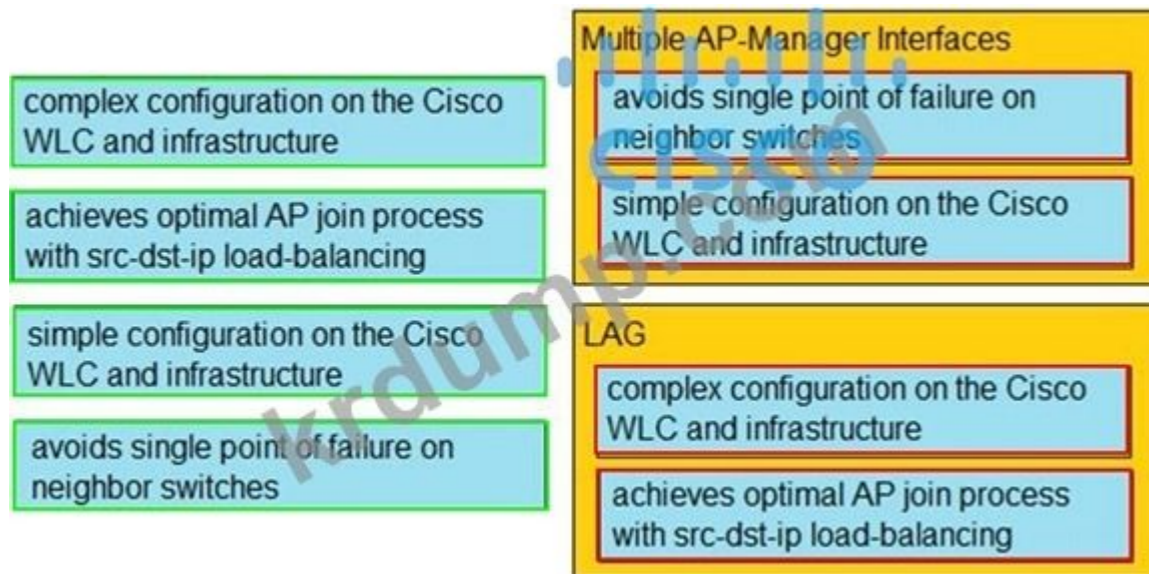
In a Cisco wireless backhaul network, traffic can be bridged between MAPs and RAPs. This traffic can be from wired devices that are being bridged by the wireless mesh or CAPWAP traffic from the mesh access points. This traffic is always AES encrypted when it crosses a wireless mesh link such as a wireless backhaul.

NEW QUESTION: 29

□□□ □□□ □□□□ □□□ □□□□ □□□ □□□□.



Answer:



NEW QUESTION: 30

Which of the following is a benefit of using Multiple AP-Manager Interfaces? (Choose two.)

- A. Avoids single point of failure on neighbor switches
- B. Achieves optimal AP join process with src-dst-ip load-balancing
- C. AP load balancing
- D. Simple configuration on the Cisco WLC and infrastructure
- E. RF load balancing

Answer: (SHOW ANSWER)

NEW QUESTION: 31

Which of the following is a benefit of using Multiple AP-Manager Interfaces? (Choose two.)

- A. EZVPN
- B. IPsec VPN
- C. VPDN
- D. SSL VPN

Answer: (SHOW ANSWER)

Cisco AnyConnect VPN uses SSL VPN. Which of the following are benefits of SSL VPN? (Choose two.)

SSL VPN uses IPsec. It uses http:// or https:// to connect to the VPN. It uses https://<address> as the URL. It uses https://<address> as the URL. It uses https://<address> as the URL. It uses https://<address> as the URL. (Choose two.)

Source: <http://www.cisco.com/c/en/us/support/docs/security/asa-5500-x-series-next-generation-firewalls/100936-asa8x-split-tunnel-anyconnect-config.html>. HTML

300-425 <https://www.dumptop.com/Cisco/300-425-dump.html> (351 Q&As Dumps, **30%OFF** Special Discount: **KrDump**)

NEW QUESTION: 32

Which of the following is the correct command to configure the maximum number of concurrent sessions for a Cisco IPsec VPN?

- A. ipsecvpn max-sessions 100
- B. ipsecvpn max-sessions 1000
- C. ipsecvpn max-sessions 10000
- D. ipsecvpn max-sessions 100000

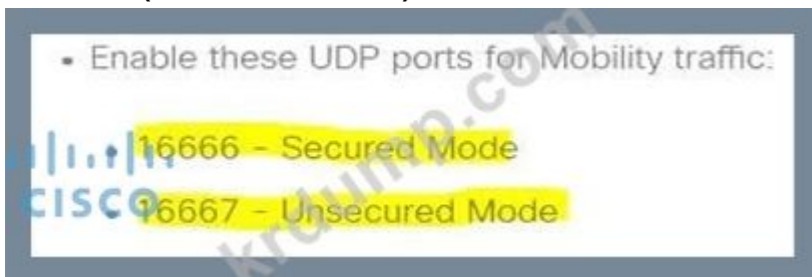
Answer: B ([LEAVE A REPLY](#))

NEW QUESTION: 33

Which of the following is the correct command to configure the maximum number of concurrent sessions for a Cisco IPsec VPN?

- A. ipsecvpn max-sessions 100, ipsecvpn max-sessions 1000
- B. ipsecvpn max-sessions 1000, ipsecvpn max-sessions 10000
- C. ipsecvpn max-sessions 10000, ipsecvpn max-sessions 100000
- D. ipsecvpn max-sessions 100000, ipsecvpn max-sessions 1000000

Answer: ([SHOW ANSWER](#))



NEW QUESTION: 34

Which of the following is the correct command to configure the maximum number of concurrent sessions for a Cisco IPsec VPN?

- A. ipsecvpn max-sessions 100, ipsecvpn max-sessions 1000
- B. ipsecvpn max-sessions 1000, ipsecvpn max-sessions 10000
- C. ipsecvpn max-sessions 10000, ipsecvpn max-sessions 100000
- D. ipsecvpn max-sessions 100000, ipsecvpn max-sessions 1000000

Answer: D ([LEAVE A REPLY](#))

ipsecvpn max-sessions 100000

NEW QUESTION: 35

Which of the following is the correct command to configure the maximum number of concurrent sessions for a Cisco IPsec VPN?

- A. -78 ~ -65dBm
- B. -72 ~ -67dBm
- C. -85 ~ -65dBm

D. -85 ~ -67dBm

Answer: D (LEAVE A REPLY)

□□

Default voice minimum RSSI is -75 dBm. but cisco reccomend to get RSSI better than -67 dBm.

https://www.cisco.com/c/en/us/td/docs/net_mgmt/prime/infrastructure/34/user/guide/bk_CiscoPrimeInfrastructur IP □□□ □□ □□□□ -90□□ □□□□ -67□□□.

NEW QUESTION: 36

□□□ □□□□□□ □□□ □□□ □ □□□ □□□ □□□ □□□□□ □□□□□. □□□□□ □□ □□□ □□□□□?

- A. □□□ □□□ □□□□□□ □□ □□□□ □□□ □□□□ □□□ WLC□ □□□ □□□ □□□□ □□ □ □□□□ □□ AP □□ □□□ □□□□ □□□□.
- B. WLC□ □□□ □□□ □□□□ □□□ □□ □□□□□ □□ WLC□ □□□ □□□ □□□ □□□□ □□□ □□□ □□□□□.
- C. WLC□ □□□ □□□ □□□□ □□□ □□ □□□□□. □□□□ □□□ □□□□□□ □□ □□□□ □□□ □□□□ □□□□ □□ AP □□ □□□ □□□□□.
- D. WLC□ □□ □□□□ □□ □□□ □□□ □□□□ □□ □□□ □□□□. □□□□ □□□ □□□□□□ □□ □□□□ □□□ □□□□ □□□□ □□ AP □□ □□□ □□□□□.

Answer: C (LEAVE A REPLY)

□□

https://www.cisco.com/c/en/us/td/docs/wireless/controller/8-0/configuration-guide/b_cg80/b_cg80_chapter_0100

NEW QUESTION: 37

□□□ □□□□□□ □□□ □□□ □ □□□ □□□ □□□ □□□□□ □□□□□. □□□□□ □□ □□□ □□□□□?

- A. □□□ □□□ □□□□□□ □□ □□□□ □□□ □□□□ □□□ WLC□ □□□ □□□ □□□□ □□ □ □□□□ □□ AP □□ □□□ □□□□ □□□□.
- B. WLC□ □□□ □□□ □□□□ □□□ □□ □□□□□. □□□□ □□□ □□□□□□ □□ □□□□ □□□ □□□□ □□□□ □□ AP □□ □□□ □□□□□.
- C. WLC□ □□□ □□□ □□□□ □□□ □□ □□□□□ □□ WLC□ □□□ □□□ □□□ □□□□ □□□ □□□ □□□□□.
- D. WLC□ □□ □□□□ □□ □□□ □□□ □□□□ □□ □□□ □□□□. □□□□ □□□ □□□□□□ □□ □□□□ □□□ □□□□ □□□□ □□ AP □□ □□□ □□□□□.

Answer: (SHOW ANSWER)

NEW QUESTION: 38

□□□□ □□□ □□□□ □□□□ □□ □□□ □□ □□□□ □□ □□ □□□□□?

- A. □ WLC□ □□□ □□□ □□□ □□□□ □□ □□□ □□ □□□ □□□ □□□ □□□ □□□ □□□.
- B. HA SSO□ □□ WLC□ □□□ □□ WLC HA □□ □ WLC□ □□□□□ □□□ □□□ □□□□□.
- C. WLC□ □□□□ □□□ □□□□ □□ □□ □□□ □□□□ □□□ □□□ □□□ □ □□□□ □□ □□ □□□□□ □□□ □□□□ □□□.
- D. □□□ □□□ □□□ □□ WLC□ □□□ □□ IP □□□ □□□ □□□ □□□□.

Answer: B (LEAVE A REPLY)

- The HA pair of AireOS WLCs should be considered as separated WLCs with the same exact configuration

NEW QUESTION: 39

□□□□ PPPoE □□□□□□ □□□□ □□□ □□□□□? □□ □□ □□□ □□□□□.

- A. L2TP□ □□ VPN □□□ □□
- B. DSL □□ □ PPPoE □□□□□ □□□□□ □□□ □□ □□ □□□ PC□ □□□ □□
- C. □□□□□ □□□ □□ □□ □□□□□ □□□ □□□□ □□□□ □□□ □□□ □□□ □□□

CEF(□□□ □□□□□ □□□)

□□: http://en.wikipedia.org/wiki/Dynamic_Multipoint_Virtual_Private_Network

NEW QUESTION: 42

□□ □□ □□□ □□□□ □□ □□ □□ □□□ □□□□ □□□ □□□□□?

- A. □□□□ □□ □
- B. □□ □□
- C. □□□
- D. □□□ □

Answer: B (LEAVE A REPLY)

It is important to note that metal chair legs and desk components will interact with the antenna of the AP and change the pattern of the radiation. Surveying the results of placement decisions with a good tool is necessary

NEW QUESTION: 43

Cisco WLC□ □□ RF □□□□ □□□□□□□ RRM □□□□□ □□ Cisco WLC□ □□ □□□□ □□□ □ □□□□. □□□□ □□ WLC □□□ 8.9□□ □□□□ □□□□□□ □□□ □ □□ RF □□□ WLC □ AP□ □ □□□□?

- A. □□ 20□□ WLC □ 1000□□ AP
- B. □□ 20□□ WLC □ 3000□□ AP
- C. □□ 20□□ WLC □ 4000□□ AP
- D. □□ 20□□ WLC □ 6000□□ AP

Answer: D (LEAVE A REPLY)

• Controller software supports up to 20 controllers and 6000 access points in an RF group.

https://www.cisco.com/c/en/us/td/docs/wireless/controller/8-9/config-guide/b_cg89/radio_resource_management.html

NEW QUESTION: 44

□□□□□ □□ □□□ □□ TPC □□ □□□□ □□□□□ -65dBm□□ □□□□□□. □□□□□ □□□ □□□□ □□ □□□ □□ □ □□ □□□ □□□□□. □□□□ □□□ □□□□□?

- A. □□ □□□ □□
- B. □ □□ □□
- C. □□ □□ □□
- D. □□□□□ □□ □□ □□

Answer: B (LEAVE A REPLY)

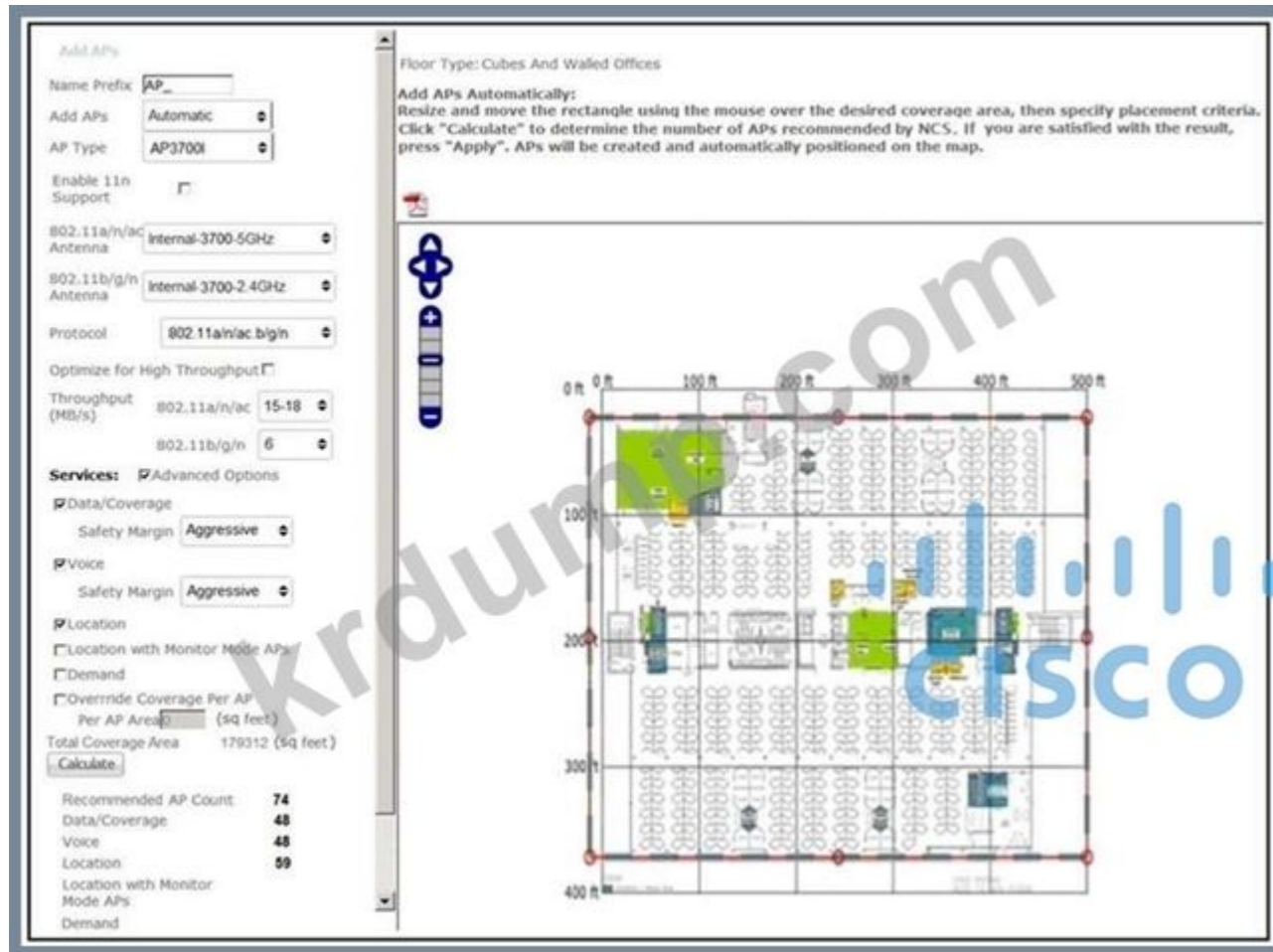
NEW QUESTION: 45

□□ □□□ □□ □□(Voice over Wireless)□ □□□ □ □□□□ □□□□□ □□□□ □ □ □□ □□□ □□□□□? (□ □□□ □□□□□.)

- A. 802.1x + Cisco □□ □□□ □ □□□ □□□□ □□ □□□ □□□□□.
- B. 802.1x □□□ □□□□ □□□□ □□ □□□□ □□□□□.
- C. □□ □□□□ □□ □□□ □□□ □□□□□□.
- D. □□□□ -80dB □□□ □□□□ □□□ □□□□□.
- E. □□□□ □□ 4□□ AP□ □□□ □ □□□ □□□□□.

Answer: B,C (LEAVE A REPLY)

NEW QUESTION: 46



Which two actions can be performed in Cisco Prime Infrastructure? (Choose two.)

- A. Add APs manually to a floor plan.
- B. Add APs automatically to a floor plan.
- C. Add APs manually to a floor plan and calculate the recommended AP count.
- D. Add APs automatically to a floor plan and calculate the recommended AP count.
- E. Add APs manually to a floor plan and calculate the recommended AP count.

Answer: D,E (LEAVE A REPLY)

Correct Answer: D, E

300-425 Cisco Prime Infrastructure dumps. DumpTop 300-425 Cisco Prime Infrastructure dumps. <https://www.dumpst.com/Cisco/300-425-dump.html> (351 Q&As Dumps, **30%OFF Special Discount: KrDump**)

NEW QUESTION: 47

Which two actions can be performed in Cisco Prime Infrastructure? (Choose two.)

- A. GRE tunnels can be configured.

NEW QUESTION: 50

Which of the following is a best practice for cable management in a rack?

- A. LED cables should be used for all connections.
- B. Cables should be bundled together and secured with zip ties.
- C. AIR-AP-BRACKET-1 should be used for all AP connections.
- D. Cables should be secured with Velcro straps.

Answer: (SHOW ANSWER)

- Use cables that are resistant to bend loss if excessive bending of cables cannot be prevented due to installation constraints.
- Avoid mounting the cabling components in places that block accessibility to other equipment (such as a power strip or fans) in and out of the racks.

NEW QUESTION: 51

Which of the following is a best practice for AP failover priority?

- A. Assign priorities to APs: Critical, High, Medium, Low.
- B. Critical priority APs get precedence over all other APs when joining a controller.
- C. In a failover situation, a higher priority AP will be allowed to join ahead of all other APs.
- D. In a failover situation, a lower priority AP will be allowed to join ahead of all other APs.

Answer: B (LEAVE A REPLY)

N+1 Redundancy

AP Failover Priority

- Assign priorities to APs: Critical, High, Medium, Low
- Critical priority APs get precedence over all other APs when joining a controller
- In a failover situation, a higher priority AP will be allowed to join ahead of all other APs

NEW QUESTION: 52

Which of the following is a best practice for key management in a Cisco AireOS WLC?

- A. CCKM
- B. OKC

- C. 802.11r
- D. SKC

Answer: A ([LEAVE A REPLY](#))

NEW QUESTION: 53

Which two methods can be used to monitor the status of a wireless LAN controller? (Choose two.)

- A. Cisco Prime Infrastructure
- B. Cisco Prime Network Registrar
- C. Syslog NMS
- D. Cisco Prime Network Manager

Answer: C ([LEAVE A REPLY](#))

CC

https://www.cisco.com/c/en/us/td/docs/wireless/controller/technotes/86/b_Cisco_Wireless_LAN_Controller_Con

NEW QUESTION: 54

Which two methods can be used to monitor the status of a wireless LAN controller? (Choose two.)

- A. FlexConnect
- B. Cisco Prime Network Registrar
- C. SSID
- D. SSID, WLAN, VLAN, ISE 802.1x

Answer: B ([LEAVE A REPLY](#))

NEW QUESTION: 55

Which two methods can be used to monitor the status of a wireless LAN controller? (Choose two.)

- A. FlexConnect
- B. WLAN
- C. -85dBm
- D. WLAN 802.11a
- E. 802.11a UNII-2
- F. RSSI

Answer: A,E,F ([LEAVE A REPLY](#))

NEW QUESTION: 56

Which two methods can be used to monitor the status of a wireless LAN controller? (Choose two.)

- A. FlexConnect
- B. SSID, WLAN, VLAN, ISE 802.1x
- C. FlexConnect, NMS, SSID, VLAN
- D. SSID, WLAN, VLAN, ISE 802.1x

Answer: (SHOW ANSWER)

□□

<https://www.cisco.com/c/en/us/support/docs/wireless-mobility/wireless-vlan/71477-ap-group-vlans-wlc.html>

NEW QUESTION: 57

□□□ □□ Cisco WLC□□ □□□ □ □□ 10□□ □□□ □□□□□ □□□□ □□□ □□ Cisco WLC□ □□ □□□□ 5□□ □□□ □□□□ □□ □□ □□ □□□ □□□□ 7□□ □ □□ □□□□ □□□ □□ □□ □□ □□□□□. □□□ □□□□ □□ □□ □□□ □□□ □□□□ □□ Cisco WLC□ □□ □□□□□ □□□□□. □ □□□ □□□ □□ □□□□□?

- A. □□□□ □□ □□□ □□□□□ □□□□□.
- B. □□□ □□□□ □□□ □□□ □□ □□ □□□□□□□□.
- C. □□□□ □□ □□□ □□□□ □□□□□.
- D. □□ □□□ □□ □□□ □□□□ □□ □□□□□□□□.

Answer: D (LEAVE A REPLY)

NEW QUESTION: 58

□□□□□ □□ □□□ SSID□ □□ □□□ □□□□ □□□□□ □□□ □□□ □□□□ □□ EPING□ □□ WLC□□ □□ WLC□ □□□□□. □□□ □□□□□□ □□□□□ □□ □□□ □□□ □□□□ □□□□?

- A. UDP □□ 16666
- B. IP □□□□ 97
- C. UDP □□ 97
- D. TCP □□ 97

Answer: (SHOW ANSWER)

□□: □□□

NEW QUESTION: 59

□□□□□ □□ 3□□ □□ LAN □□□□□ □□□□ □□□ □□□□□□ □□ □□□□□ □□ □□□□□ □□□□ □□ □□ □□□□ □□□ □□□□□ □□□. □□□□□ □□ □□□□□ □ □□□ □□□□?

- A. SS0□ □□ N+1 □□□
- B. SSO□ □□ N+1
- C. SSO□ □□ N+N □□□
- D. N+N(SSO □□)

Answer: B (LEAVE A REPLY)

https://www.cisco.com/c/en/us/td/docs/wireless/technology/hi_avail/N1_High_Availability_Deployment_Guide/N1_HA_Overview.html?

NEW QUESTION: 60

□□□ □□ □□□□□ □□□□□□□□. □□□□□□□ 5GHz □□□□□ □□□□□ □□□ □□□ □□□□ □□ Cisco WLC □□ □□□ □□□□□?

- A. Cisco □□ □□□ □ □□
- B. □□ □□□
- C. □□ □□
- D. RRM

Answer: C (LEAVE A REPLY)

□□: □□□

NEW QUESTION: 65

□□ □□□ □□ □□(Voice over Wireless)□ □□□ □ □□□□ □□□□□ □□□□ □ □ □□ □□□ □□□□□? (□ □□□ □□□□□.)

- A. □□ □□□□ □□ □□□ □□□ □□□□□□.
- B. 802.1x + Cisco Centralized Key Management□ □□□□ □□ □□□ □□□□□.
- C. □□□□ □□ 4□□ AP□ □□□ □ □□□ □□□□□.
- D. □□□□ -80dB □□□ □□□□ □□□ □□□□□.
- E. 802.1x □□□ □□□□ □□□□ □□ □□□□ □□□□□.

Answer: A,E ([LEAVE A REPLY](#))

https://www.cisco.com/c/en/us/td/docs/solutions/Enterprise/Mobility/vowlan/41dg/vowlan41dg-book/vowlan_ch5.html

NEW QUESTION: 66

□ □□□ 500□□ □□□ □□□□ □□ □□□□ □□□□ □□□□ □□ □□□□□ □□□□ □□□□. □□□ □□□□ □□ □□□ □□□□ □□□□ □□□□?

- A. □□ □□ □□
- B. □□ □□□ □□
- C. □□ □□□ □□
- D. □□□ □□ □□

Answer: D ([LEAVE A REPLY](#))

https://www.cisco.com/c/dam/en_us/solutions/industries/docs/education/cisco_wlan_design_guide.pdf

NEW QUESTION: 67

□□□□□ □□□ □ □□ □□□□ □□□ □□ □□□ □□ □□ □□ □□ □□□ □□□□ □□□□. □□□□ □□ □□ □□□ □□□□□?

- A. □□□ □□□ □□□□□ □□ -72dBm □□□□
- B. 2□□ □□□ □□□□□ □□□□ -67dBm □□□□
- C. □□□ □□□ □□□□□ □□ -67dBm □□□□
- D. 2□□ □□□ □□□□□ □□□□ -72dBm □□□□

Answer: C ([LEAVE A REPLY](#))

NEW QUESTION: 68

□□□□□ □□ □□□ □□ TPC □□ □□□□ □□□□□ -65dBm□□ □□□□□□. □□□□□ □□□ □□□□ □□ □□□ □□ □ □□ □□□ □□□□□. □□ □□□ □□□□□?

- A. □□□□□ □□ □□ □□
- B. □□ □□ □□
- C. □ □□ □□
- D. □□ □□□ □□

Answer: A ([LEAVE A REPLY](#))

NEW QUESTION: 69

□□ □□□□□ Cisco IP □□□ □□□□□ □□□ □□ Cisco Prime□ □□ □□ □□□ □□□□ □□□□. □□□□□ □□□□ dBm □□□ □□□□□?

- A. -78 ~ -65dBm
- B. -72 ~ -67dBm

- C. -85 ~ -65dBm
- D. -85 ~ -67dBm

Answer: (SHOW ANSWER)

Default voice minimum RSSI is -75 dBm. but cisco recommend to get RSSI better than -67 dBm.

https://www.cisco.com/c/en/us/td/docs/net_mgmt/prime/infrastructure/34/user/guide/bk_CiscoPrimeInfrastructure_3_4_0_UserGuide/bk_CiscoPrimeInfrastructure_3_4_0_UserGuide_chapter_01010.html

IP □□□ □□ □□□□ -90□□ □□□□ -67□□□.

NEW QUESTION: 70

□□□□ □□□□□ 2.5m □□□ □□□ □□ □□□ □□□□ □□□□. □□ □□□ □□□□ □ □□□□ □ □□ □□ □□□ □□□□□? (3□□ □□□□□.)

- A. □□□ □□ □□□□ AP □□ □□
- B. □□□ □□ □□□ □□□□ AP □ □□□□□ □□□ □□□□.
- C. □□□□ □□□□ □□ AP□ DoS □□□ □□□□□.
- D. □□□ □□□□ □□ AP□ □□□□□.
- E. □□ □□□□ □□ AP□ □□□□□.
- F. □□□□ □□□ AP□ □□□□□.

Answer: (SHOW ANSWER)

□□

https://www.cisco.com/c/en/us/td/docs/wireless/technology/mesh/8-4/b_mesh_84/Site_Preparation_and_Plannin

NEW QUESTION: 71

□□□□□ □ □□ □□□□□ □□□□ □□ □□□□□ □□□□ □□□ □□ □□□ □□□ □□□. □□ □□□□□ □□□□ □□□□?

- A. GTK-□□□
- B. PEAP
- C. PMF
- D. FT

Answer: D (LEAVE A REPLY)

NEW QUESTION: 72

□□ □ □□ □□ □□ □ Wi-Fi □□ □□□ □□□□□□□□. □□□□□ □□ □□□ □□□□ □□ □□□ □□□□ □□□□?

- A. □□□ □□□□ □□□
- B. □□ □□ □□
- C. □□□□□
- D. □□□□ □□ □□

Answer: A (LEAVE A REPLY)

https://www.cisco.com/c/en/us/products/collateral/wireless/spectrum-expert/product_data_sheet0900aecd807033c3.html

NEW QUESTION: 73

Cisco Hyperlocation□ □□ □□□□□ □□□ □ □□□□ □ □□□ □□□□□?

- A. 20%
- B. 30%

- C. 40%
- D. 50%

Answer: A (LEAVE A REPLY)

- 20% cell overlap for optimized roaming and location calculations

NEW QUESTION: 74

Which of the following is a best practice for cable management in a server rack?

- A. LED cables are preferred over standard cables.
- B. Cables should be bundled together and secured with zip ties.
- C. AIR-AP-BRACKET-1 should be used to mount access points.
- D. Cables should be routed through the top of the rack.

Answer: (SHOW ANSWER)

- Use cables that are resistant to bend loss if excessive bending of cables cannot be prevented due to installation constraints.
- Avoid mounting the cabling components in places that block accessibility to other equipment (such as a power strip or fans) in and out of the racks.

NEW QUESTION: 75

Which of the following is the recommended VoWLAN cell boundary recommendation for Cisco Aironet access points?

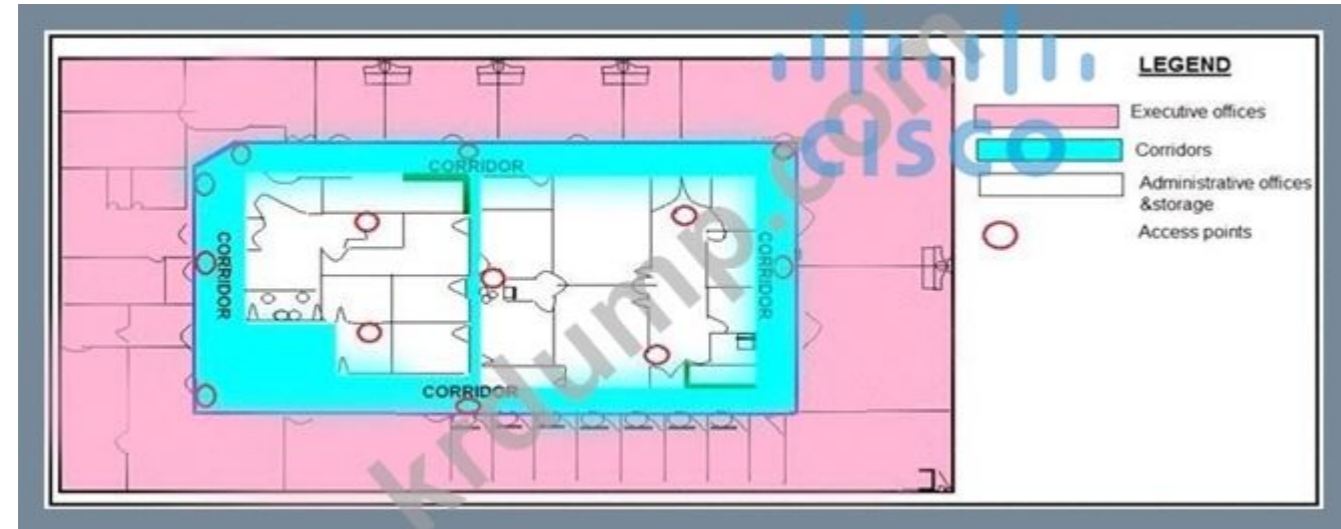
- A. -67dBm
- B. 35 RSSI
- C. 2.4GHz
- D. 3000mW

Answer: A (LEAVE A REPLY)

- The optimal VoWLAN cell boundary recommendation is -67 dBm

NEW QUESTION: 76

Which of the following is a best practice for Wi-Fi AP placement in a server rack?



Wi-Fi APs should be placed in the server rack.

NEW QUESTION: 80

Which two are advantages of using 5GHz RF compared to 2.4GHz RF? (Choose two.)

- A. Lower power consumption
- B. Less interference
- C. Higher data rates
- D. X2000
- E. Less range

Answer: B,E (LEAVE A REPLY)

00: 00 000 00

NEW QUESTION: 81

Which two are advantages of using CAPWAP tunnels for Cisco Catalyst 9800 Series Wireless Controller mobility tunnels? (Choose two.)

- A. Support for IPsec encryption
- B. Support for CAPWAP tunnels
- C. Support for CAPWAP tunnels
- D. Support for IPsec encryption

Answer: (SHOW ANSWER)

The Cisco Catalyst 9800 Series Wireless Controller mobility tunnel is a CAPWAP tunnel with control path (UDP 16666) and data path (UDP 16667). The control path is DTLS encrypted by default. Data path DTLS can be enabled when you add the mobility peer.

NEW QUESTION: 82

Which two are best practices for access point placement in a location-ready design? (Choose two.)

- A. Cluster in the center of the floor
- B. Place at the perimeter of the floor
- C. Place in the center of the floor
- D. Place at the perimeter of the floor

Answer: B (LEAVE A REPLY)

In a location-ready design, it is important to ensure that access points are not solely clustered in the interior and toward the center of floors. Rather, perimeter access points should complement access points located within floor interior areas. In addition, access points should be placed in each of the four corners of the floor, and at any other corners that are encountered along the floor perimeter. These perimeter access points play a vital role in ensuring good location fidelity within the areas they encircle, and in some cases may participate in the provisioning of general voice or data coverage as well.

NEW QUESTION: 83

Which two are advantages of using WLC for Cisco Catalyst 9800 Series Wireless Controller mobility tunnels? (Choose two.)

- A. WLC
- B. CP2
- C. CP2
- D. CP1

Answer: (SHOW ANSWER)

00

<https://www.cisco.com/c/dam/en/us/td/docs/cloud-systems-management/network-automation-and-management/d>

NEW QUESTION: 84

Which two Cisco LAN architectures support link aggregation? (Choose two.)

- A. Ethernet
- B. Fibre Channel
- C. InfiniBand
- D. iSCSI
- E. IPsec
- F. LAG

Answer: (SHOW ANSWER)

<https://community.cisco.com/t5/wireless-mobility-documents/lag-link-aggregation/ta-p/3128669>

NEW QUESTION: 85

Which two are valid Cisco Unified Wireless Network (CWN) architectures? (Choose two.)

- A. Cloud Managed Network
- B. Cloud Managed Network with Cloud Managed Network
- C. Cloud Managed Network with Cloud Managed Network
- D. Cloud Managed Network with Cloud Managed Network

Answer: C (LEAVE A REPLY)

<https://www.cisco.com/c/en/us/td/docs/routers/connectedgrid/antennas/installing-combined/industrial-routers-and-industrial-wireless-antenna-guide/ANT-MP-INT-OUT-M.html>

NEW QUESTION: 86

Which two are valid Cisco Unified Wireless Network (CWN) architectures? (Choose two.)

- A. Flexconnect
- B. WMM
- C. AP
- D. RF
- E. DTTPC

Answer: C,D (LEAVE A REPLY)

https://www.cisco.com/c/en/us/td/docs/wireless/controller/8-10/config-guide/b_cg810/configuring_ap_groups.html

NEW QUESTION: 87

Which two are valid Cisco Unified Wireless Network (CWN) architectures? (Choose two.)

- A. Cloud Managed Network
- B. Cloud Managed Network with Cloud Managed Network
- C. Syslog NMS
- D. Cloud Managed Network with Cloud Managed Network

Answer: C (LEAVE A REPLY)

https://www.cisco.com/c/en/us/td/docs/wireless/controller/technotes/86/b_Cisco_Wireless_LAN_Controller_Configuration_Best_Practices.html

NEW QUESTION: 88

Which protocol is used to carry mobility data traffic over Ethernet? (EoIP) which is IP protocol 97. This is the IP protocol number, not a TCP/UDP port value.

- A. IP protocol 67
- B. IP protocol 77
- C. IP protocol 87
- D. IP protocol 97

Answer: [\(SHOW ANSWER\)](#)

Mobility data traffic is carried via Ethernet over IP (EoIP) which is IP protocol 97. This is the IP protocol number, not a TCP/UDP port value.

NEW QUESTION: 89

Which protocol is used to carry mobility data traffic over Ethernet? (EoIP) which is IP protocol 97. This is the IP protocol number, not a TCP/UDP port value.

- A. DNS over WLC over IP protocol 97.
- B. WLC over IP protocol 97.
- C. DNS over IP protocol 97.
- D. WLC over IP protocol 97.

Answer: [\(SHOW ANSWER\)](#)

IP: 97

NEW QUESTION: 90

Which IEEE 802.11ac Wave 2 standard is supported by the Cisco 3800 Series Catalyst 6A series switch? (Select two.)

- A. 10G Ethernet over 100Gbps
- B. CAT-7E over 100Gbps
- C. AP over 100Gbps
- D. AP over 55Gbps
- E. mGig over 100Gbps

Answer: [\(SHOW ANSWER\)](#)

NEW QUESTION: 91

Which protocol is used to carry mobility data traffic over Ethernet? (EoIP) which is IP protocol 97. This is the IP protocol number, not a TCP/UDP port value.

- A. UDP port 16666
- B. UDP port 97
- C. TCP port 97
- D. TCP port 16666

Answer: [\(SHOW ANSWER\)](#)

Local Mode

Each Cisco CleanAir-enabled access point radio provides air quality and interference detection reports for the current operating channel only. Local mode does not disrupt client connections. When a hybrid-REAP access point is connected to the controller, its Cisco CleanAir functionality is identical to local mode.

NEW QUESTION: 98

Which protocol is used for authentication in a Cisco CleanAir-enabled access point in local mode?

- A. PEAP
- B. FT
- C. PMF
- D. GTK-0000

Answer: B ([LEAVE A REPLY](#))

00: 00 0 00 000

NEW QUESTION: 99

Which protocol is used for authentication in a Cisco CleanAir-enabled access point in local mode?

- A. 00 000 00 0000 0000 000 0 0000.
- B. 0 00000 00000 00 RF 000 000 0 0000.
- C. 00 000 00000 00 0000 0000 000 0 0000.
- D. Syslog NMS 0000 0000 00 00000 000.

Answer: ([SHOW ANSWER](#))

300-425 00 000 00000 00 DumpTop 00 0000 000 300-425 00! DumpTop 0 00 300-425 00 000 000000, DumpTop 300-425 00 000 00000000 00 0 00000000. 0000 000 0000 00 DumpTop 300-425 000 000000. <https://www.dumptop.com/Cisco/300-425-dump.html> (351 Q&As Dumps, **30%OFF Special Discount: KrDump**)