

Cisco.300-420.v2022-06-07.q104

□□□□:	300-420
□□□□:	Designing Cisco Enterprise Networks
□□□:	Cisco
□□ □□ □□□:	104
□□:	v2022-06-07
# □□ □:	1448
# □□ □□□:	1040
https://www.krdump.com/Cisco.300-420.v2022-06-07.q104.html	

NEW QUESTION: 1

□□□□ IPv6□ IPv4 □□□□ □□□□□□□ □□□ □□ DNS □□□ □□□□ □□ □□□ □□□ □□ □□ □□□□ □□□ □□□□. □□□□ □□ □□□□□□ □□□ □□□□□□?

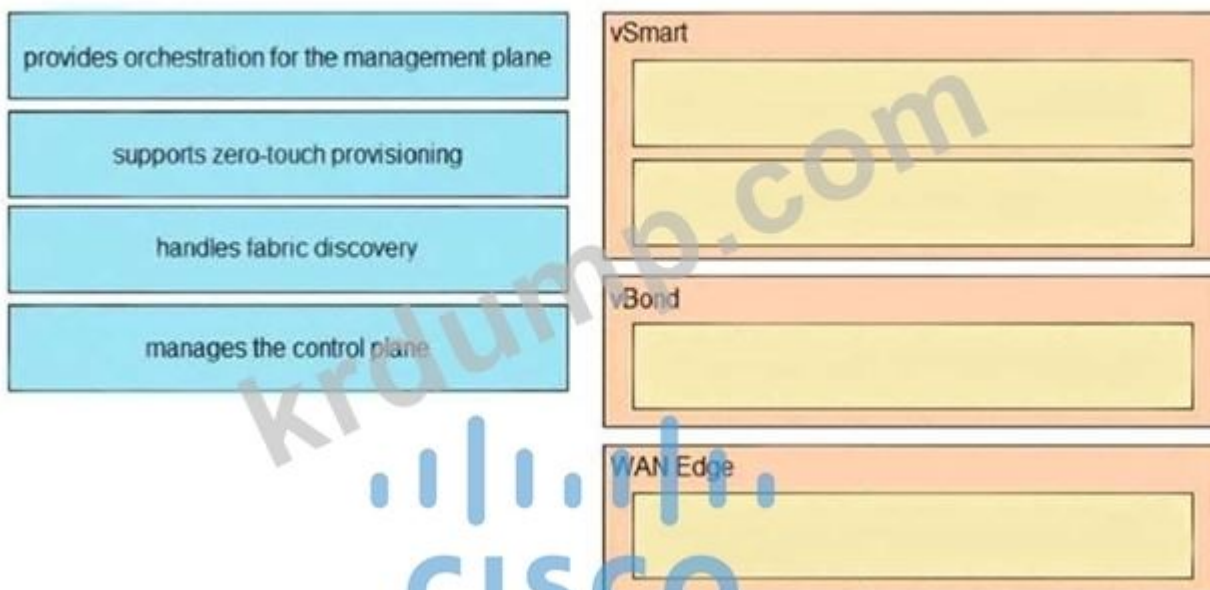
- A. □□ □ □□□ □□ AFT
- B. □□ □□
- C. □□□ □□ □□
- D. IPv4 □□□ □□ □□□ □ IPv6

Answer: B ([LEAVE A REPLY](#))

NEW QUESTION: 2

□□□ □□□□ □□□□□ □□□ □□□□ Cisco SD-WAN □□ □□□ □□□ □□□□.

Answer Area



Answer:

□ □□□□□ Layer 3 □□□□ □□□ □□ □□□ □□□ EIGRP □□□□□ □□□□ □□□□. □□□□□ □□□ □□ LAN□□ □□□□ □□□□□ □□□□ □□□ □□ □□ EIGRP □□□□ □□ LAN □□□□□ □□□ □□□□. □□□□□ □□ □□□ □□□ □□□?

- A. EIGRP □□ □ □□□□ □□ □□ □□ □□□□□.
- B. □□□□ □□□ □□ □□□□□ □□□ □□□□ □□ LAN□ □□□□.
- C. redistribute connected □□□ □□□□ □□ LAN □□□□ □□□
- D. □□ LAN □□□□ □□ □□□□□ □□□□.

Answer: ([SHOW ANSWER](#))

□□: □□ □□ □□ □ □□□ □□□

NEW QUESTION: 5

□□□□□ □□□ □□ □□□□ □□ OSPF □□□□□ □□□□ □□□. □ □□□□ WAN□□ LAN□□□□ □□□ □□ 2□□ □□□□ □□□□ □□□□□. □ □□□ □□□□ □□□□ □□ □□□ □□□□. □□□□□ □□□ □□□□□ □□ □□□ □□□ □□□□□ □□□□ □□□ □□□ □□□ □□□□ □□ □□ □□ □□□ □□□□□?

- A. □□ □□□□ □□
- B. □□□ □□□□ □□
- C. □□□□□ □□
- D. □□□ □□□ □□

Answer: D ([LEAVE A REPLY](#))

NEW QUESTION: 6

□□ □□□□ WAN□ □□ □□□□□ □□□□□ □□□□ □□ QoS□ □□□□□. □□□□ □□ □□□ □□ □□□ □□□□□. □□□□□ □□ □□□ □□ □□□□ □□□□ □□□□ □□ □□ □□□□ □□□□ □□ □?

- A. DSCP AF2□ □□ CBWFQ
- B. DSCP AF3□ □□ CBWFQ
- C. DSCP EF□ □□ LLQ
- D. DSCP AF4□ □□ LLQ

Answer: C ([LEAVE A REPLY](#))

NEW QUESTION: 7

□□ □□□□ □□ vEdge □□□□ □□□ □ □□□□ □ □□ □□□ □□□□□?

- A. BGP AS-path prepending□ □□□□ □□ □□□□ □□□ □□□ MED□ □□□□ □□□□ □□□□ □□□ □□□ □□□.
- B. 1□ □□□ □□ □□□ □□□□□ vEdge □□□ □□ BFD□ □□□□□.
- C. DPI□ □□□ □□□□□ □□□□ vEdge□ □□□□□ □□ □□□□□ □□□ □ □□□□□ □□□.
- D. □□□ vEdge□ □□ vEdge□□ □□□□□ HSRP □□ □□□ OMP □□□ □□□ □□□□ □□□.

Answer: A ([LEAVE A REPLY](#))

NEW QUESTION: 8

□□□ □□□□□. □ □□□□ □□ □□□ □□□ □□□□□ □□□□ □□ BGP □□□□ □□□□ □□□□.
□□□ □□□□ □□□□□ □□□ □□ □□ □□□□ □□ □□ □□□□. □□ □□□□ □□ □□□□ □□ □
□□□ □□□□ □□□?

- A. NOPEER □□□□□ □□□□□.
- B. □□□ □□□□ □□ BGP □□ □□ □□□□□ □□□□□.
- C. □□□ □□□□ No-Export □□□□□ □□□□□.
- D. □□ □□□□ □□ BGP □□□ □□□□□ □□□□□.

Answer: C ([LEAVE A REPLY](#))

NEW QUESTION: 9

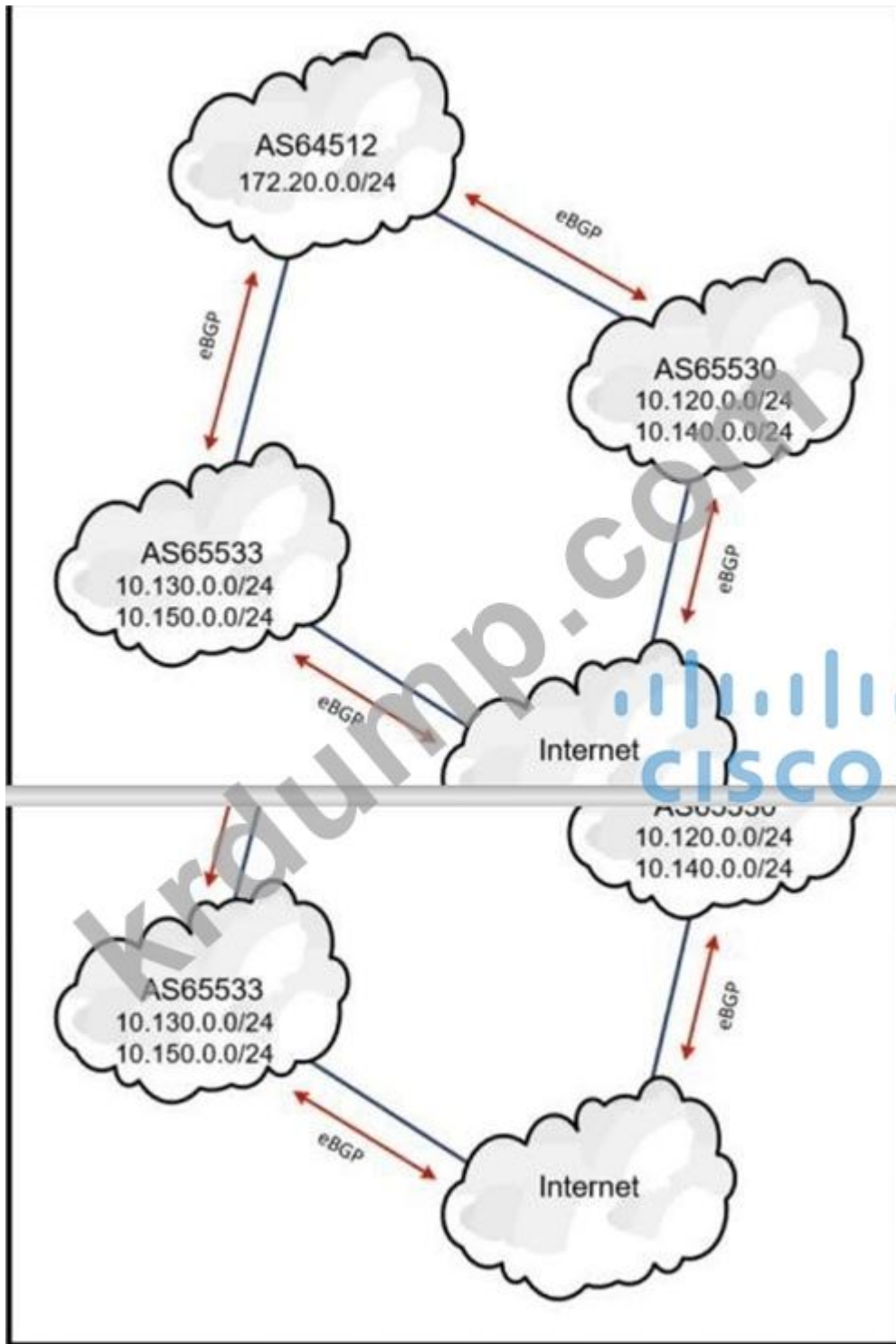
□□□□ IPv6□ IPv4 □□□□ □□□□□□□□ □□□ □□ DNS □□□ □□□□ □□ □□□ □□□ □□ □□
□□□□ □□□ □□□ □□□□. □□□□ □□ □□□□□□ □□□ □□□□□□?

- A. □□ □ □□□ □□ AFT
- B. □□□ □□ □□
- C. □□ □□
- D. IPv4 □□□ □□ □□□ □ IPv6

Answer: C ([LEAVE A REPLY](#))

□□: □□ □□ □□ □□ □□□□ □□□□

NEW QUESTION: 10



Which of the following IP addresses is advertised by AS65533 to AS65530 via eBGP?
 AS64512 advertises 172.20.0.0/24 to AS65533 via eBGP. AS65533 advertises 10.130.0.0/24 and 10.150.0.0/24 to the Internet via eBGP. AS65530 advertises 10.120.0.0/24 and 10.140.0.0/24 to the Internet via eBGP.

- A. 172.20.0.0/24
- B. 10.120.0.0/24
- C. 10.130.0.0/24
- D. 10.140.0.0/24

Answer: (SHOW ANSWER)

NEW QUESTION: 11

A router is configured with a loopback interface. The router is configured with a default route. A network administrator wants to ensure that traffic destined for the loopback interface is not affected by the default route. Which configuration command should be used?

- A. `ip ipsec transform-set NAT`
- B. `ip ipsec transform-set Re-IP`
- C. `ip ipsec transform-set NAT`
- D. `ip ipsec transform-set NAT`

Answer: [\(SHOW ANSWER\)](#)

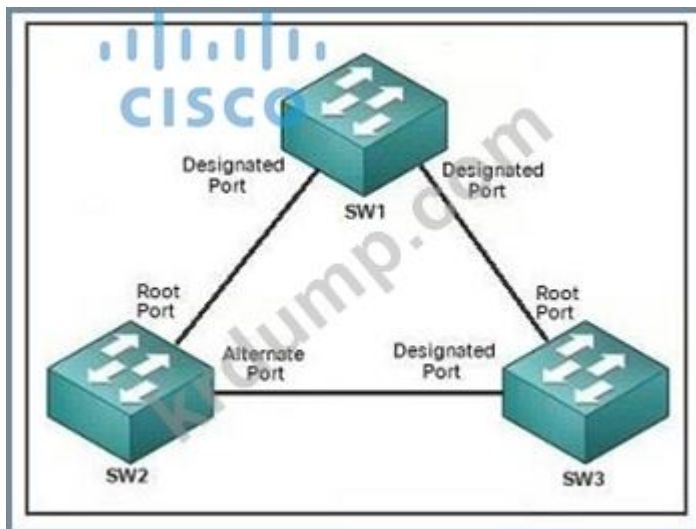
NEW QUESTION: 12

Which of the following is a valid IPv6 address?

- A. `IPFIX`
- B. `0000`
- C. `0000`
- D. `0000`

Answer: [\(SHOW ANSWER\)](#)

NEW QUESTION: 13



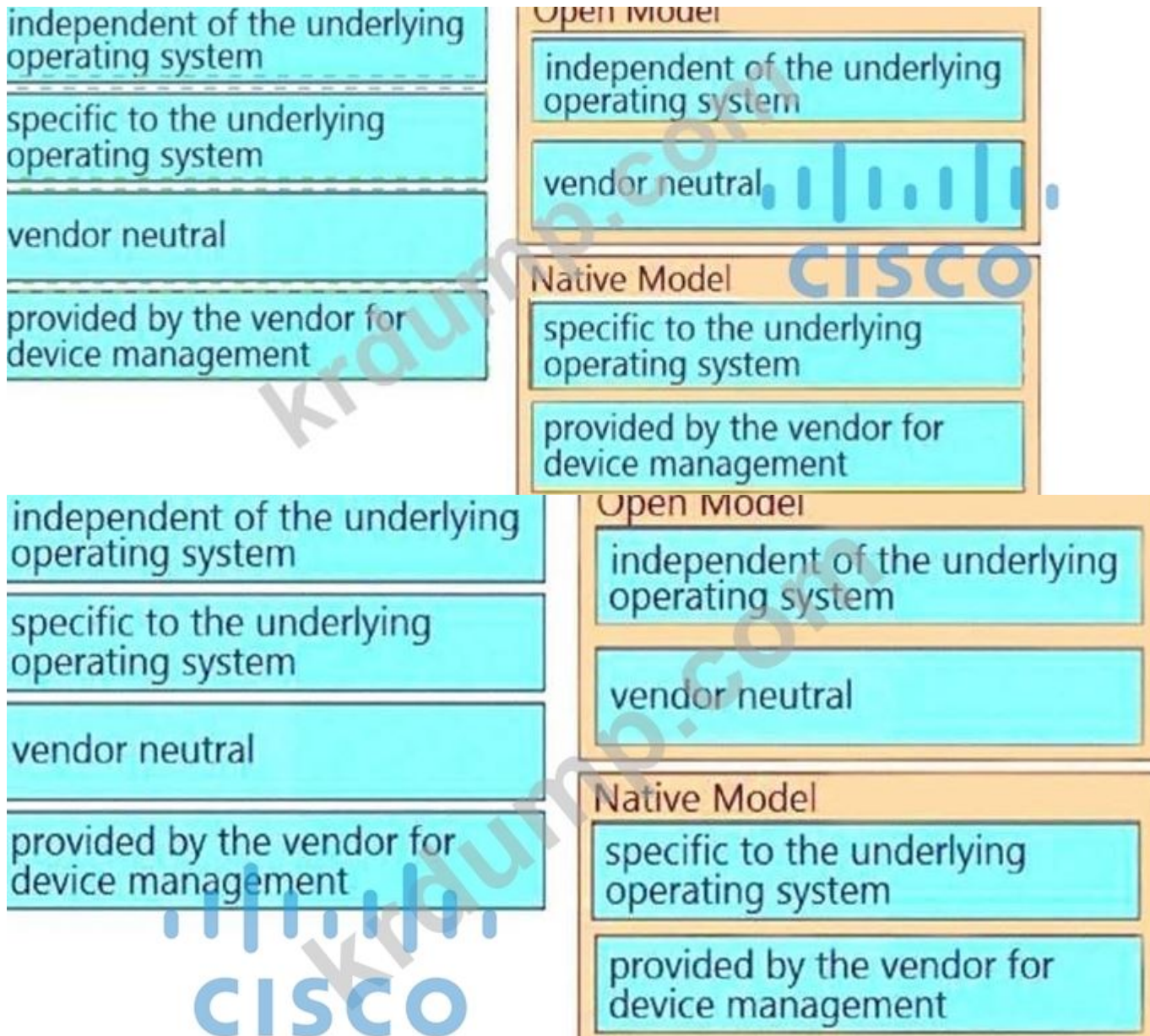
SW1 is the root bridge. SW2 and SW3 are connected to SW1. SW2 and SW3 are also connected to each other. Which of the following is the state of the SW2-SW3 link?

- A. SW1 is the root bridge.
- B. SW2 is the root bridge.
- C. SW3 is the root bridge.
- D. SW1 is the root bridge.

Answer: [B \(LEAVE A REPLY\)](#)

NEW QUESTION: 14

Which of the following is a valid IPv6 address? (2 correct answers.)



NEW QUESTION: 19

Which two statements are true about SD-WAN? (Choose two.)

- A. GRE tunnels are used to connect SD-WAN devices.
- B. SD-WAN devices can be managed centrally.
- C. SD-WAN devices can be managed locally.
- D. SD-WAN devices can be managed via a central controller.

Answer: A (LEAVE A REPLY)

NEW QUESTION: 20

Which two statements are true about LLQ? (Choose two.)

- A. LLQ
- B. WRED

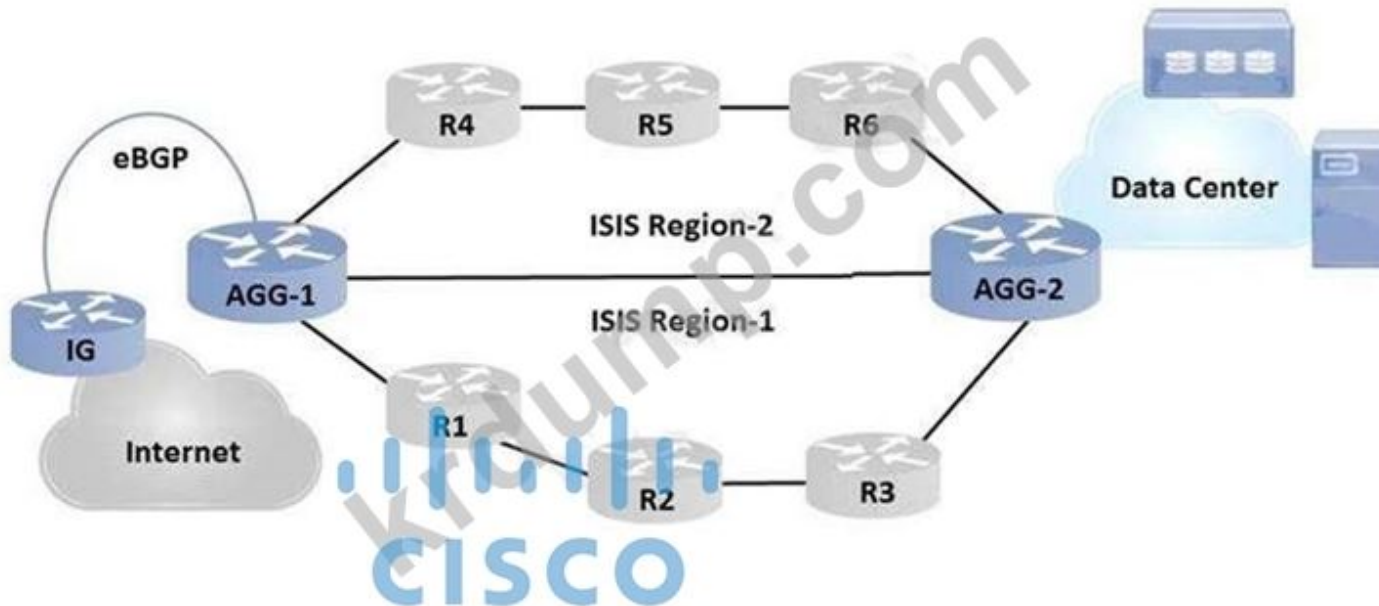
C. DiffServ

D. IntServ

Answer: D (LEAVE A REPLY)

NEW QUESTION: 21

□□□ □□□□□.



□□□□ □□□□□□ □□□ □□ IGP □□□□ □□□□ □□□. □□□□ □□□ □□□□ □□□.

□□□ □□ □□□ □□□ □□□□□ □□□.

□□□ □□□□ □□ □□ □ □□□ □□□□□ □□□.

□□□□ □□□ □□□□ □□ □ □□ IS-IS □□□□ □□□□□? (2□□ □□□□□.)

A. SPF □ PRC □□□ □□ □□ □□□ □□□□□.

B. BGP□ IS-IS □□□□ □□□□ □□ 1 □□□ □□ □□□ □□□ □□□□□.

C. □□□ □□□□ □□□□ □□ 1 □□□□ □□□□ □□□□ □□□□ □□ 1/□□ 2 □□□□ □□□□□.

D. IS-IS □□□□□ □ □□□ IP □□□ □□□ □ □□□ □□□ □□□□.

E. □□□□ □□□ □□ □□ 1/□□ 2 □□□□ □□□□□ □□ □□□ □ □□ □□□□ □□□□□.

Answer: A,E (LEAVE A REPLY)

NEW QUESTION: 22

□□□□□ □□ □□□ □□□□ □□ □□□ □□ □□□□ □□□□ □□□ □ □□ □□ □□□ QoS □□□□

□ □□□□ □□□. □□ □□□□ □□□□ □□□ □□ □□□□ QoS □□ □□ □□□ □□□ □□□□ □□

10□ □□□ □□□ □□□□ □□□. □□□□□ □□□ □□□□ □□ QoS □□□ □□□□□?

A. □□

B. □□ □□□

C. □□□ □□

D. □□□□

Answer: B (LEAVE A REPLY)

□□: □□□□ □□□

NEW QUESTION: 23

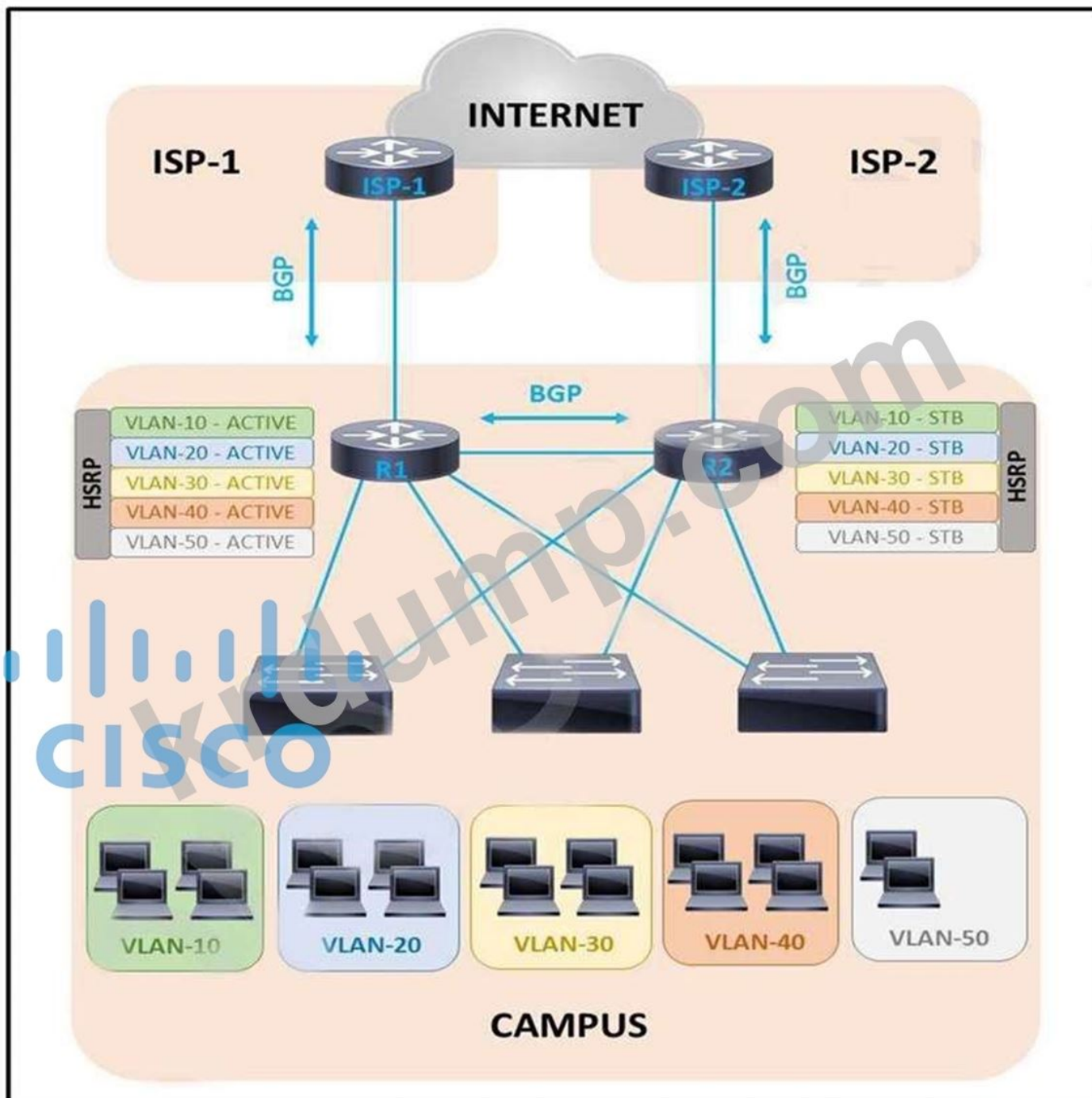
VRRP □□ □□□ □□ □□□□ □□ □□? (2□ □□)

- A. VRRP□ □□□ □□□□ □□□□□.
- B. VRRP □□□ up □□ down □□□ □□ VRRP □□□ □□ □□□ □□□ □ □□
- C. VRRP □□□ □ □□ □□□ □□□ □□□ □ □□□□.
- D. VRRP □□□□□ □□ □□□ □□□□ □□□□ □□□□ □□□.
- E. VRRP□ □□□□□ □ □□□ □□□ □□□ □ □□□□.

Answer: B ([LEAVE A REPLY](#))

NEW QUESTION: 24

□□□ □□□□□.



Which of the following is a valid HSRP group name? Which of the following is a valid HSRP group name? Which of the following is a valid HSRP group name?

- A. 10.10.10.10
- B. 10.10.10 RSTP
- C. VLAN 100 10.10.10 R2
- D. R1 R2 10.10.10.10

Answer: (SHOW ANSWER)

NEW QUESTION: 25

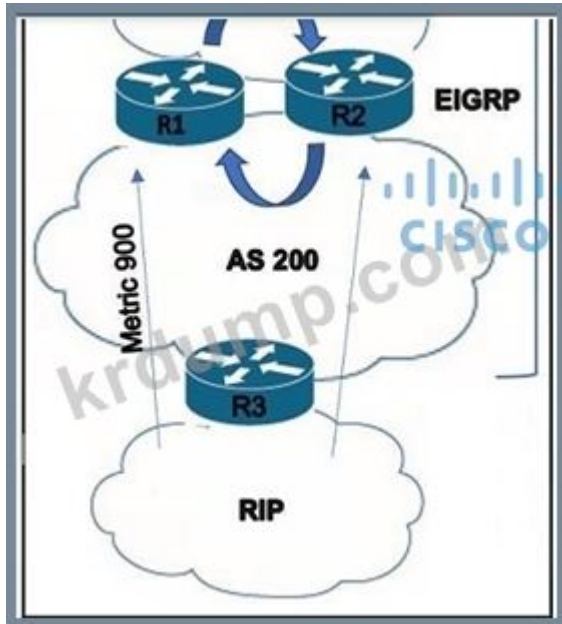
Which of the following is a valid IPsec VPN configuration? Which of the following is a valid IPsec VPN configuration? Which of the following is a valid IPsec VPN configuration?

- A. GRE tunnel interface IPsec
- B. tunnel interface IPsec
- C. tunnel interface
- D. tunnel interface IPsec

Answer: (SHOW ANSWER)

☐☐

NEW QUESTION: 26



Which of the following is a valid EIGRP metric? Which of the following is a valid EIGRP metric? Which of the following is a valid EIGRP metric?

- A. 10
- B. 10 10
- C. 10 10
- D. 10-10

Answer: C (LEAVE A REPLY)

NEW QUESTION: 27

□□□ □ □□□□□□ □□□ □ □□□□□ □□□ □□□ □□ □□ □□□□ □□ □□ □□ □□□□ □□□□□? (2□□ □□□□□.)

- A. BIDIR-PIM
- B. MP-BGP
- C. IGMPv2
- D. MLD
- E. MSDP

Answer: ([SHOW ANSWER](#))

NEW QUESTION: 28

□ □□□□□ □□ □□□□ □□□□ □□□ □□□□ □□ □□ □□ YANG □□□ □□ □□□□. □□□□□ □□ □□□ □□□□ □□□□?

- A. IEEE NETCONF
- B. □□□□
- C. OpenConfig
- D. IETF

Answer: D ([LEAVE A REPLY](#))

NEW QUESTION: 29

□□ □□□□ □□ RP □□□ □□□□ □□□ □□□ □□ □□□ □□□□□?

- A. □□ RP
- B. □□□□□-RP
- C. □□ RP
- D. □□□□□ □□□

Answer: D ([LEAVE A REPLY](#))

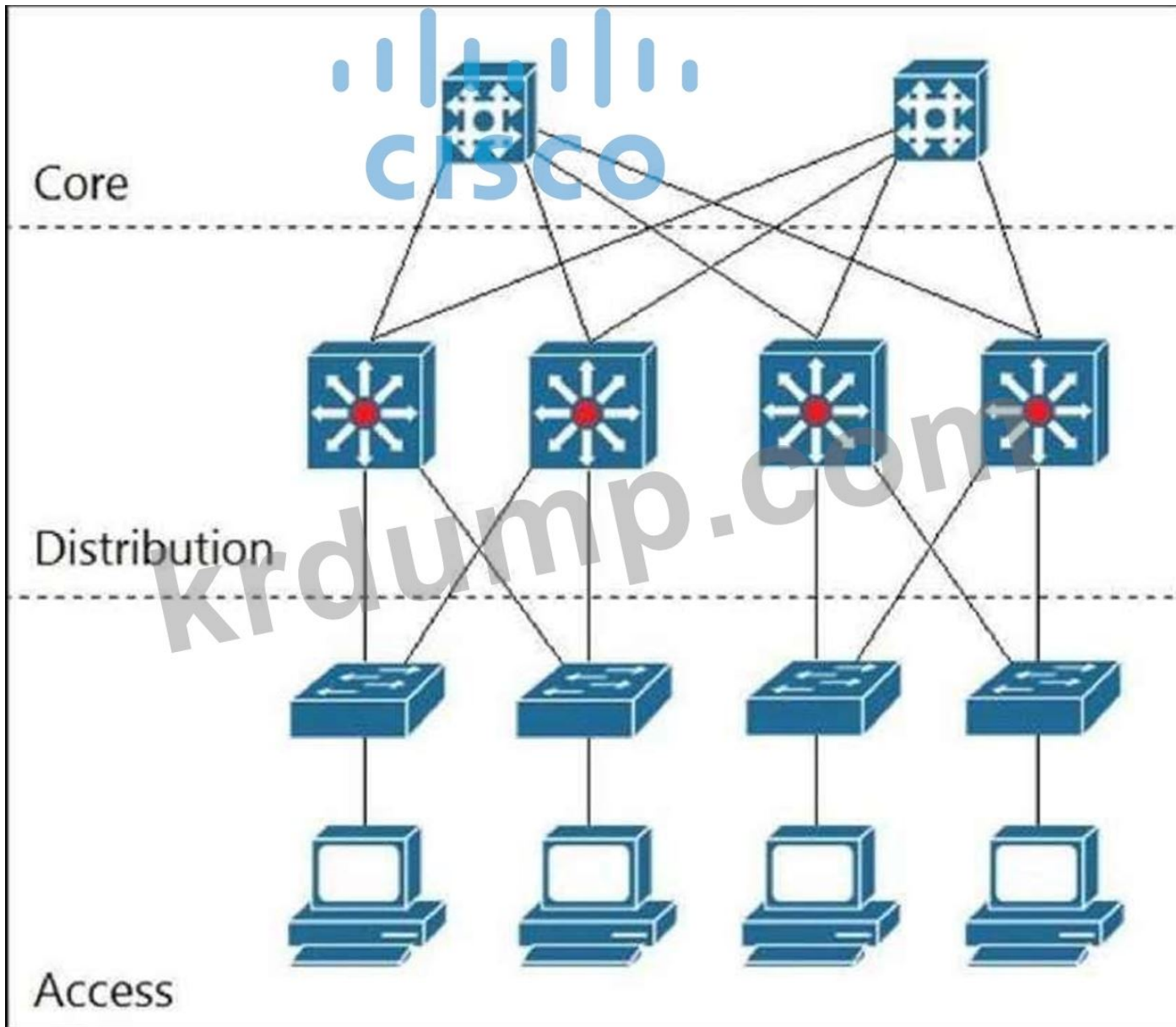
NEW QUESTION: 30

□□□ □□□□□. □□□□□ □□ □□ □□ □□□□ □□□□ □□□. □□□□ HSRP□ WAN 1 □□□ □□ □□ □□ □□ □□□ □□□□ □□□ R2□ □□ HSRP □□□□ □□ □ □□□ □□ □□□. □□□□□ □□ □□ □□□□ □□□□ □□□□? (2□□ □□□□□.)

- A. □□□ R1□□ PBR □□
- B. □□□ R1□□ IP SLA □□
- C. IP □□ □□□ □□
- D. □□□ R1□□ □□□ □□ □□ □□
- E. □□ □□ □□ □□

Answer: ([SHOW ANSWER](#))

NEW QUESTION: 31

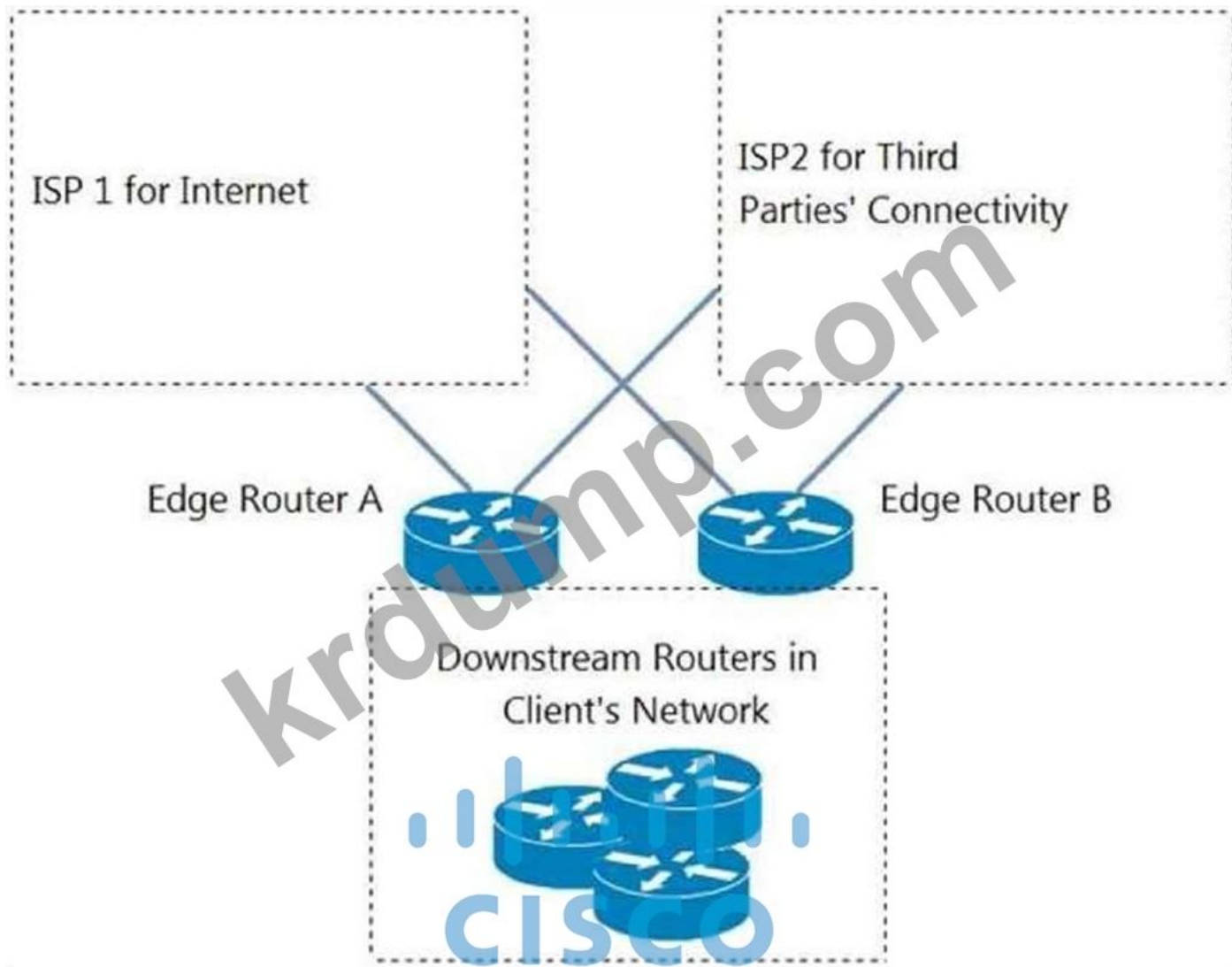


□□□ □□□□□. □□ □ □□ □□□ □□ □□ □□ □□ □□□□□ □ □□ □□□□ □□□□□? (2 □□ □□□□□.)

- A. HSRP □□
- B. □□ □□ □□□ □□ □□ □□
- C. RPVSTP+ □□
- D. □□ □□ □□ □□ □□ □□
- E. IGP □□

Answer: ([SHOW ANSWER](#))

300-420 □□ □□□ □□□□□ □□ DumpTop □□ □□□□ □□□ 300-420 □□! DumpTop □ □□
 300-420 □□ □□□ □□□□□□, DumpTop 300-420 □□ □□□ □□□□□□□□ □□□ □□□□□□□□.
 □□□□ □□□ □□□□ □□ DumpTop 300-420 □□□ □□□□□.



A client network is connected to two ISPs. The client network consists of three downstream routers connected to two edge routers, Edge Router A and Edge Router B. Edge Router A is connected to ISP 1 for Internet, and Edge Router B is connected to ISP 2 for Third Parties' Connectivity. The client network is running BGP. The client network is connected to ISP 1 and ISP 2. The client network is connected to ISP 1 and ISP 2. The client network is connected to ISP 1 and ISP 2.

- A. The client network is connected to ISP 1 and ISP 2.
- B. The client network is connected to ISP 1 and ISP 2.
- C. The client network is connected to ISP 1 and ISP 2.
- D. The client network is connected to ISP 1 and ISP 2.

Answer: C ([LEAVE A REPLY](#))

NEW QUESTION: 35

A network engineer is configuring a network. The network engineer is configuring a network. The network engineer is configuring a network. The network engineer is configuring a network. The network engineer is configuring a network. The network engineer is configuring a network. The network engineer is configuring a network. The network engineer is configuring a network. The network engineer is configuring a network. The network engineer is configuring a network.

- A. PIM-SM
- B. MSDP
- C. BIRDIR-PIM
- D. PIM-SSM

Answer: ([SHOW ANSWER](#))

NEW QUESTION: 36

LAN □□ □□□□ □□□□ □□□□□ □□ □□□□□□ □□□□ □□ □□□□ □□ □□□□ □□□ □□□ □□□□□?

- A. □□ □□
- B. □□ □□
- C. VTP □□□
- D. VLAN □□□

Answer: (SHOW ANSWER)

□□□ □□□ □□□ LAN□ □□ □□□ □□□□ □□□□ □□□ □□□ □ □□□□□. □□□ □ □ □□ □□□ □□□□ □□□ □□□ DoS □□□ □□□□ □□□□ □□ □□□ □□□□□□ □□□□□□, □□□□□ □□ □□□□□ □□□ □□□□ □□ LAN □□□ □□□□ □□ □□□□□□. □□:

<https://www.cisco.com/c/en/us/td/docs/switches/lan/catalyst6500/ios/12-2SX/configuration/guide/book/storm.pdf>

NEW QUESTION: 37

□□□□ □□□ □□□□□ □□□□□ Cisco SD-WAN □□ □□□ □□□ □□□□□.

distributes routes and policy information via OMP	Cisco WAN Edge router
enables the communication of devices that sit behind NAT	Cisco vSmart Controller
enables centralized provisioning and simplifies network changes	Cisco vManage
is responsible for traffic forwarding security encryption	Cisco vBond Orchestrator

Answer:

distributes routes and policy information via OMP	is responsible for traffic forwarding security encryption
enables the communication of devices that sit behind NAT	distributes routes and policy information via OMP
enables centralized provisioning and simplifies network changes	enables centralized provisioning and simplifies network changes
is responsible for traffic forwarding security encryption	enables the communication of devices that sit behind NAT

□□ □□ □□ □□, □□, □□□, QoS □ □□□ □□□□□ □□□□□. OMP□ □□ □□ □ □□ □□□ □□□□ □. □□ □□□ □□□□□□ □□□□ □□ □□□□ □□□ □□□□□□. NAT □□ □□ □□□ □□□ □□□ □ □□□.

NEW QUESTION: 38

□□□ □□□□□. □□□□ □□ □□□□□□ □□□□□ □□ □□ □□□ □□□□ STP □□ □□□ □□□
□□□ □□□□□. □□□□ □□ □□□ □□□□ Gi1/0/1-10□ □□ □□□ □□□ □□□?

- A. BPDU □□
- B. □□□□□
- C. □□ □□
- D. UplinkFast

Answer: (SHOW ANSWER)

NEW QUESTION: 39

□□□ □□□□ □□□□□ □□□□ YANG □□□ □□□ □□□□. □□ □□□ □□□□ □□ □□□□.

Answer:

Cisco Native

platform dependent

supports CDP and LLDP

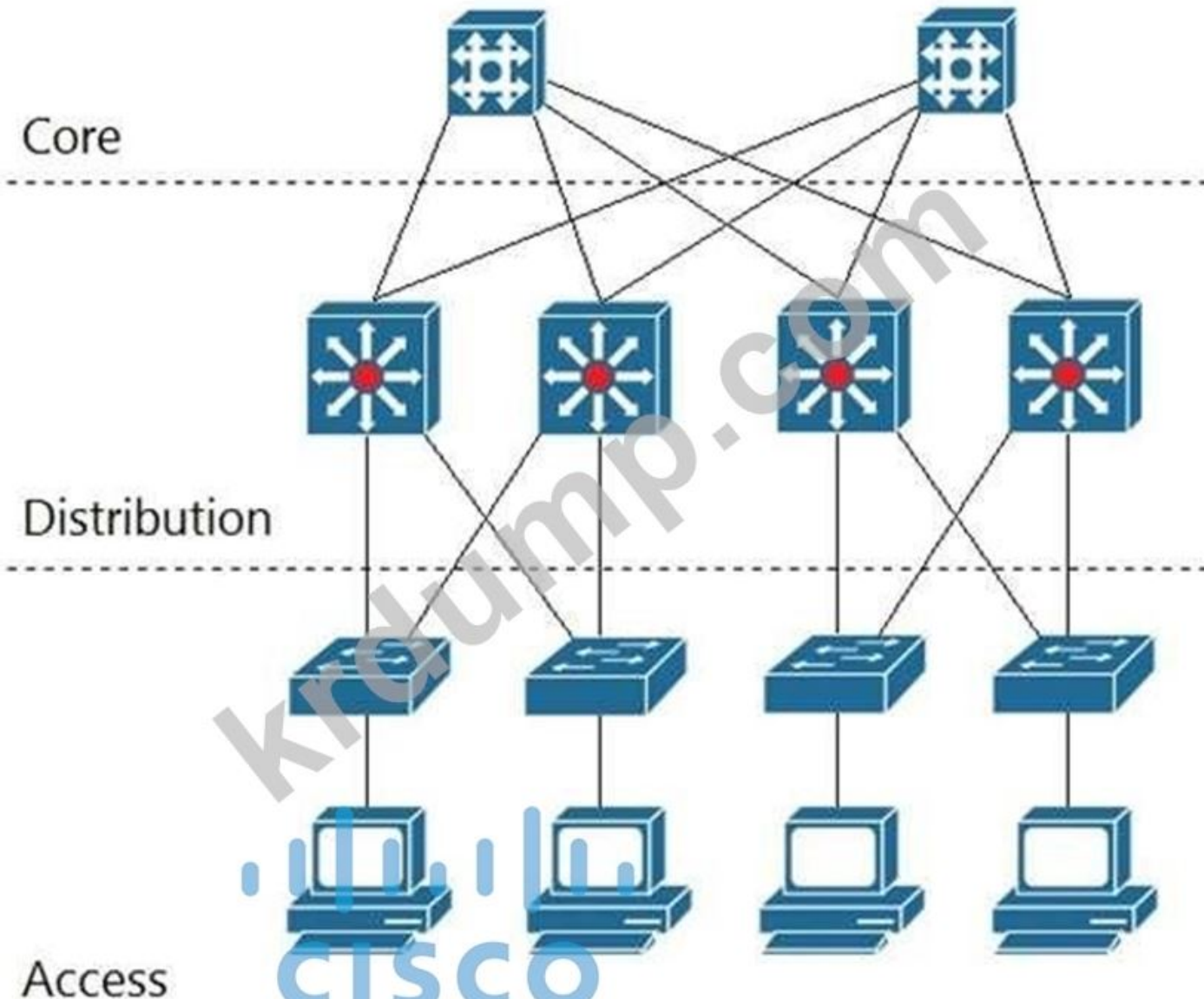
OpenConfig

independent of underlying platform

supports LLDP only



NEW QUESTION: 40



Which two protocols are used for inter-Distribution layer connectivity? (2 answers)

- A. OSPF
- B. IGP
- C. HSRP
- D. RPVSTP+
- E. RSTP

Answer: A,B (LEAVE A REPLY)

Correct Answer: A, B

NEW QUESTION: 41

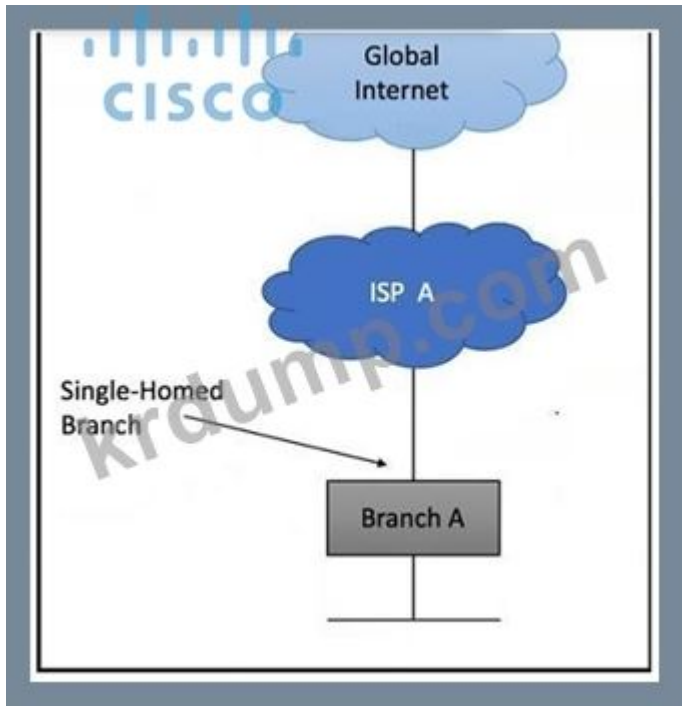
Which two Cisco SD-WAN components are used for network control? (2 answers)

vManage	performs the initial authentication of WAN Edge devices
vSmart controller	provides a GUI interface to monitor, configure, and maintain the SD-WAN devices
vBond orchestrator	responsible for the control plane

Answer:

vManage	vBond orchestrator
vSmart controller	vManage
vBond orchestrator	vSmart controller

NEW QUESTION: 42

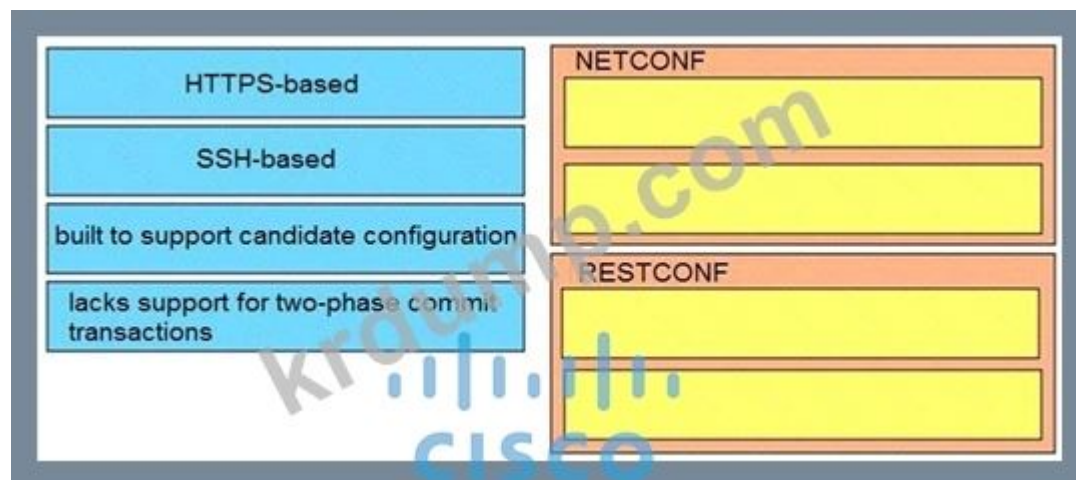


- Which of the following is the most appropriate configuration for Branch A?
- A. BGP with No-Export and No-Advertise.
 - B. NOPEER.
 - C. BGP with No-Export and No-Advertise.
 - D. BGP with No-Export and No-Advertise.

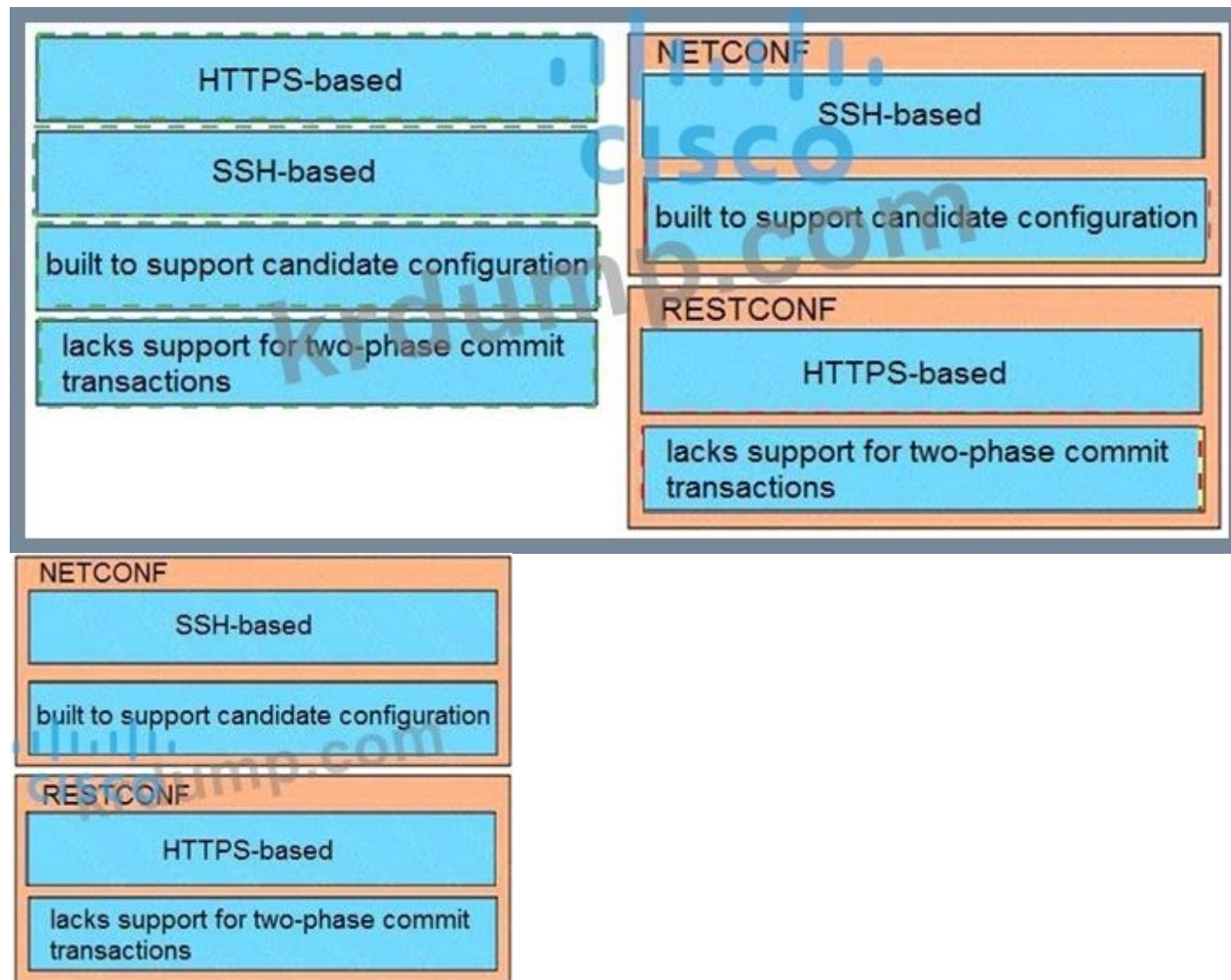
Answer: C ([LEAVE A REPLY](#))

NEW QUESTION: 43

□□□ □□□□ □□□□□ □□□□ □□□□□ □□□ □□□□.



Answer:



NEW QUESTION: 44

□□□□□ □□ □□□ □□ □□□ □□□□ □□□ □□□□□ □□□□ □□□□ □□□□ □□□.

3. Which of the following is a solution for a network that has a large number of hosts and a large number of links? (Choose three.)

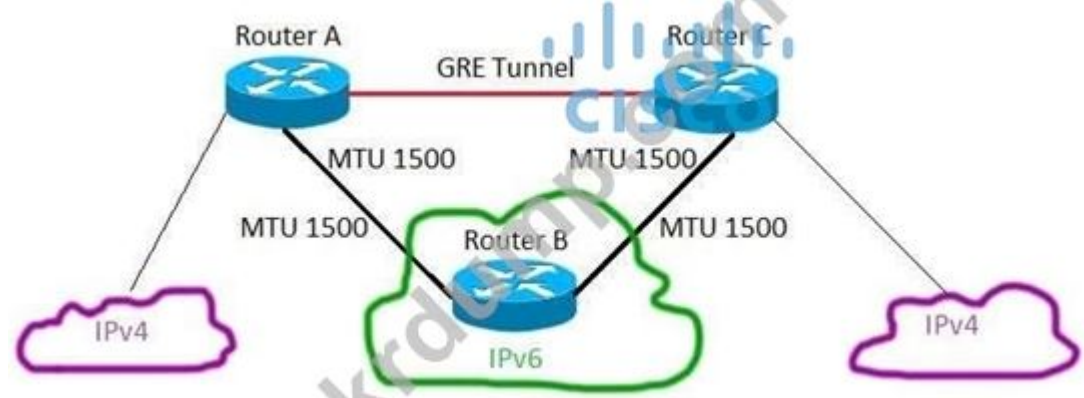
- A. EVN
- B. MPLS
- C. IPsec
- D. VRF-Lite

Answer: A (LEAVE A REPLY)

☐: ☐☐☐☐☐☐ WAN

NEW QUESTION: 45

1. Which of the following is a solution for a network that has a large number of hosts and a large number of links? (Choose three.)



- A. MTU 1500
- B. IPv6 MTU
- C. MTU 1476
- D. IPv4 MTU

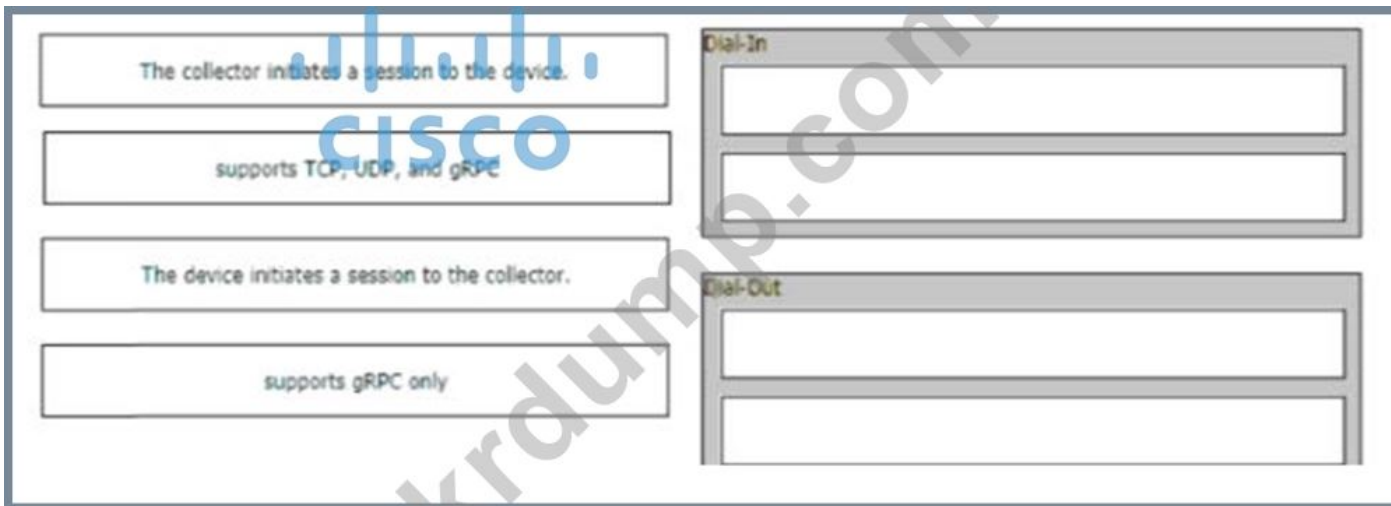
Answer: C (LEAVE A REPLY)

NEW QUESTION: 46

1. Cisco SD-Access is a solution for a network that has a large number of hosts and a large number of links. Which of the following is a solution for a network that has a large number of hosts and a large number of links? (Choose three.)

- A. Cisco
- B. Cisco
- C. Cisco
- D. Cisco

Answer: (SHOW ANSWER)



Answer:



NEW QUESTION: 51

VRRP □□ □□□ □□ □□□□ □□ □□? (2□ □□)

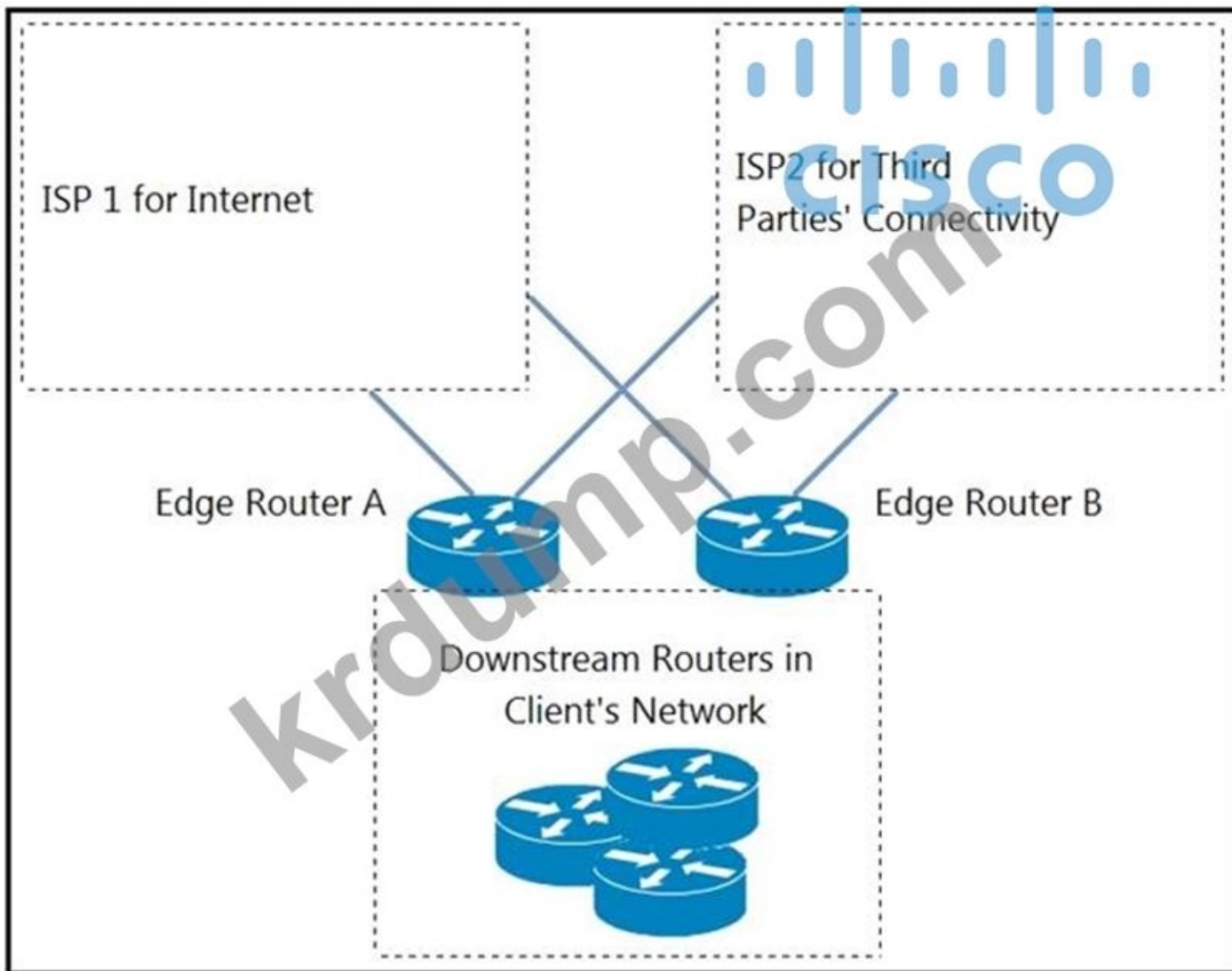
- A. VRRP □□□ □□ □□□ VRRP □□□ up □□ down □□□ □□ □□□ □ □□□□.
- B. VRRP □□□□□ □□ □□□ □□□□ □□□□ □□□□ □□□.
- C. VRRP □□□ □ □□ □□□ □□□ □□□ □ □□□□.
- D. VRRP□ □□□□□ □ □□□ □□□ □□□ □ □□□□.
- E. VRRP□ □□□□□ □□□ □□□□□.

Answer: A,D (LEAVE A REPLY)

<https://www.ciscolive.com/c/dam/r/ciscolive/emea/docs/2019/pdf/BRKCRS-2821.pdf>

NEW QUESTION: 52

□□□ □□□□□.



ISP1 and ISP2 are connected to Edge Router A and Edge Router B. The client's network contains downstream routers. Which of the following is the most likely reason for this configuration?

- A. The client's network is a multi-AS network.
- B. The client's network uses VRF and eBGP.
- C. The client's network is a multi-tenant network.
- D. ISP2 AS-path prepend is used.

Answer: C ([LEAVE A REPLY](#))

NEW QUESTION: 53

The client's network is a multi-tenant network. Which of the following is the most likely reason for this configuration?

- A. WRED
- B. WRED
- C. WRED
- D. WRED

Answer: D ([LEAVE A REPLY](#))

NEW QUESTION: 54

Cisco SD-Access □□□□□□ □□□ □ □□ □ □□ □□□ □□□□□? (2□□ □□□□□.)

- A. □□□ □□□
- B. □□□□ □□□
- C. □□ □□□
- D. □□□ □□ □□□
- E. □□ □□□

Answer: C,D (LEAVE A REPLY)

SD-Access□□ 3□□ □□□ □□ □□□ □□□□.

□□. □□ □□ □□□ □□ □□□□ □□ □□

□□□. □□ □□□ □□□ Anywhere□ □□ □□□□ □□□ □□ □□□□□ □□□□□. □□ □ □□ □□□ □□

NEW QUESTION: 55

□ □□□□□ □□ □□□ □□ □□□□□□ □□□□ □□ □□ □□□□ □□□□ □□□□□□ □□ □□□ □□□ □□ □□□ TV □□□□□□ □□□ □□□□. □□ □□□□□ □□□□□ □□□ □□ □□□ □□□□ □□□ □?

- A. PIM-SM
- B. PIM-SSM
- C. □□ □□ □□□□□
- D. BIDIR-PIM

Answer: B (LEAVE A REPLY)

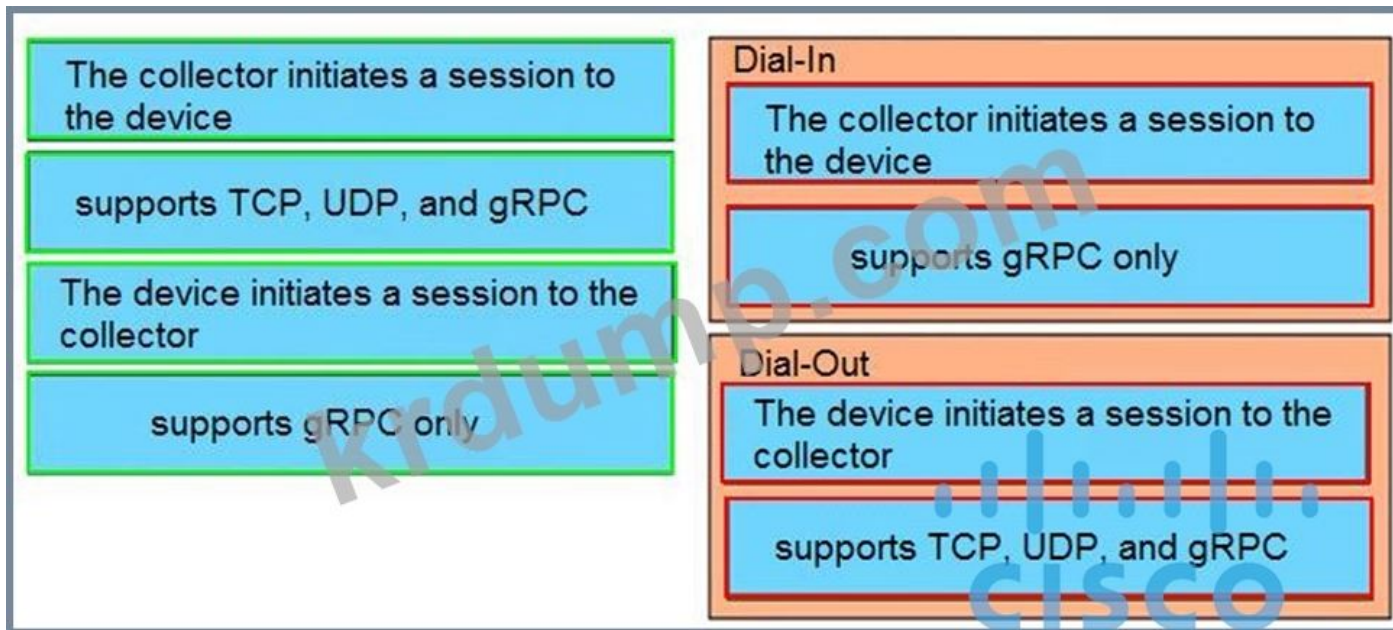
PIM-SSM□ □ □□□ □□□ □□ PIM □□□ □□ □□□ □□ □□□□□□ □□□□□□□ □□□□□□. □□ PIM-SSM□ RP□ □□ □□□ □□□□□□.

NEW QUESTION: 56

□□□ □□□□ □□□□□ □□□□ □□ □□□□□ □□□ □□□□.



Answer:



□□:
 □□ □□ □□□□ □□□ □□□□ □□ □□□ □□□□ □□□□ □□□□ □□□□. □□ □□ □□□ 64
 □□ □□□□□□ gRPC□ □□ □□□□□. □□ □□ □□□□ □□□□ □□□ □□□□ □□□ □□ □□□
 □□□□□. □□ 64□□ IOS XR □□□(NCS 6000 □□□ □□□ □□)□ gRPC □ TCP □□□□□ □□□□□.
 □□ 32□□ IOS XR □□□□ TCP□ □□□□□.

□□:
https://www.cisco.com/c/en/us/td/docs/iosxr/asr9000/telemetry/b-telemetry-cg-asr9000-61x/b-telemetry-cgasr9000-61x_chapter_010.html#id_36445

NEW QUESTION: 59

□□□□ □□□□ □□ □□□ □□□ □□□□ □□□□ □□□ □□ □□□□ □□□□.
 □□

Cisco □□ BGP □□ □□□ □□□□□ □□□ □□□ □□□ □□□?

- A. □□□□
- B. □□
- C. □□
- D. □□ □□ □□
- E. AS □□

Answer: C (LEAVE A REPLY)

NEW QUESTION: 60

□□□□ □□□ □□ □□ L3VPN MPLS □□□ □□ □□□ □□ IPSEC VPN □□□ □□□□. □□ □ □□
 MPLS □□□ □□□ □□□□ □□□□ □□ □□□ □□ □□□□ □□ □□□ □□□□□?

- A. □□ □□□ □□ □□ □□□ □□ □□□□ □□ □□□□ □□ □□ □□□ □□□□ BGP□ □□□□□.
- B. EIGRP□ □□□□ □□□ □□ □□□ □□ □□□ □□□□□.
- C. IP SLA□ □□□ □□ □□□ □□□□ □□ □□□ □□□□ □□ □□ □□ □□□ □□ □□□ □□□□□.

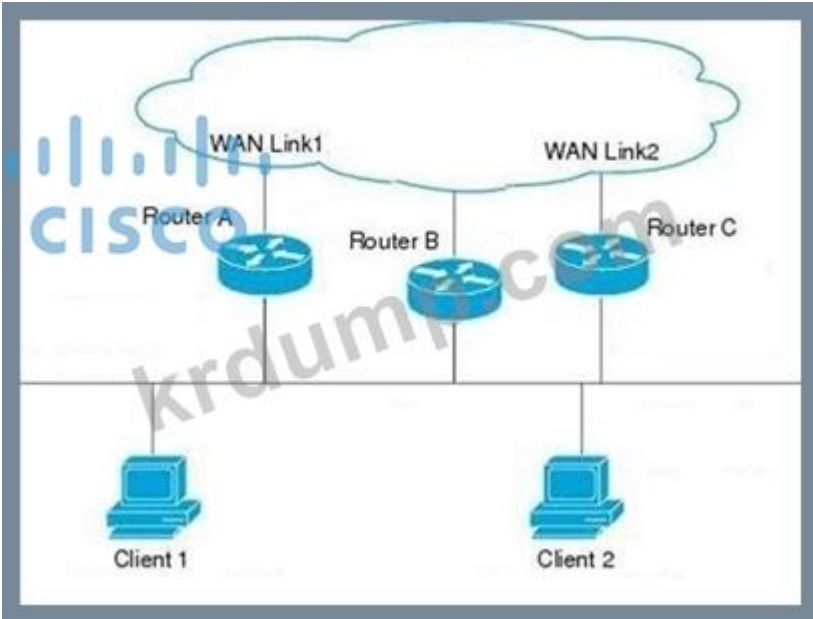
- A. BPDU □□ □□
- B. BPDU □□
- C. □□ □□
- D. □□ □□

Answer: D (LEAVE A REPLY)

□□: □□ □□□□□□ □□□ □□□□

NEW QUESTION: 64

□□□□ □□□ □□ □□□□ □□□□ □□□□. (□□□□ □□□□□□.)



□□□ A□ □□ □□ □□□ 250□□ □□□ GLBP □□ □□ □□□□□□□□. □□□ B□ C□ □□ GLPB □ □□□ □□□□□. AVG□ □□□ □□ □□□ C□ □□ □□ □□□□□□ □□□□□ □□ □□ □ □□□□□ □□□ □□□□ □□□. □□□□ □□□□□ □□□ □□□□□ □□□ □□□□□. □□□ C□□ □ □□□ □□ □□□ □□□□ □□□□ □□□ □□□□□?

- A. glbp 10 □□(□□□ B□□)
- B. glbp 10 □□(□□□ C□□)
- C. glbp 10 □□ □□ 200(□□□ B□□)
- D. glbp 10 □□ □□ 200(□□□ C□□)

Answer: D (LEAVE A REPLY)

□□□ C□□ glbp 10 priority 200 □□□ □□□□ □□□ □□ □□□ □□□□□. GLBP(Gateway Load Balancing Protocol) □□□□□ □□ □□□ □ GLBP □□□□□□ □□□□ □□□ AVG □ □□□ □□ □□□ □□□□ □□□□□. □□□ □□□□□□ □□□ A□ □□ □□ □□□□□□ □□□□ □. LAN □□□□□□ AVG□ □□□□ □□ □□ □□ □□□□□□ □□□□□ □□□ □□□□ □□ □□□□□ □□□□□. □□□ C□□ □ □□□ □□□□ □□□ A□ AVG□ □□□ □ □□□ C□ □□□□□□. □□□ □□□□□ □□□ □□ show run □□□ □□□□□ □□□ □□□□□ □□□ □ □□□□□.

- A. □□
- B. □□
- C. □□□
- D. □□□

Answer: ([SHOW ANSWER](#))

NEW QUESTION: 67

□□□□ □□□□□ □□□□□ □□□□ □□□□ □□ □□□ □□□ □□□□ □□ □□□□□ □□ □ □□□□
 □ □□□□ □□□. □□ □□□ □□□□ □□□□?

- A. PPTP
- B. IPsec
- C. GRE
- D. IPsec□ □□ GRE

Answer: D ([LEAVE A REPLY](#))

NEW QUESTION: 68

□□□ □□ □□□ □□ □□□ □□□ □□ □□□□ □□□ □□□ □□□ □□ □□□ □□□□□□ □□□. □
 □ □□□□ □□□ □□□ □□□ □□□□ □□□ □□□□ □□□□□□?

- A. IPFIX
- B. □□ □□ □□
- C. □□ □ □□
- D. □□ □□

Answer: ([SHOW ANSWER](#))

□□ □□□ □□ □ □□□ □ □□ □□□ □□□□. □□ □□□ □□□□ □□□□ □□□ □□□□ □□□□
 □□□□□□□. □□ □□□ □□ □□ □□□□□ □□□□ □□□□. on-change□ □□□□ □□□□□ □□
 OSPF □□□□ □□□□ □□□ □□ □□□□ □□□ □□□ □□□□ □□□□ □□□□□.

<https://developer.cisco.com/docs/ios-xe/#!streaming-telemetry-quick-start-guide/streaming-telemetry>

NEW QUESTION: 69

□□□□□ □□ □□ □□□□ VLAN□ □□□□ □□□ □□□ 2 □□□□ □□□□ □□□. □□□□□ □□ □
 □□ □□□ □□□□.

- * □□ □□□ □□□□ □□□□□ □□
 - * □□□ 2 □□ □□□
 - * □□□ CPU □ □□□□ □□□ □□ □□□
- □□□ □□ □□□ □□□□ □□□□?

- A. MST
- B. □□ PVST+
- C. PVST+
- D. RSTP

Answer: A ([LEAVE A REPLY](#))

NEW QUESTION: 70

Which OSPF LSA types are used to advertise a default route?

- A. Type 1
- B. NSSA
- C. Type 2
- D. Type 5 and Type 7

Answer: D ([LEAVE A REPLY](#))

NEW QUESTION: 71

Which two statements are true regarding the configuration of a Cisco IOS router to support IPv6 and IPv4 dual-stack routing? (Choose two.)

- A. IPv6 and IPv4 can be configured on the same interface.
- B. IPv4 and IPv6 can be configured on separate interfaces.
- C. IPv6 and IPv4 can be configured on the same interface.
- D. IPv4 and IPv6 can be configured on separate interfaces.

Answer: B ([LEAVE A REPLY](#))

NEW QUESTION: 72

Which two statements are true regarding the configuration of a Cisco IOS router to support IPv6 and IPv4 dual-stack routing? (Choose two.)

- A. IPv6 and IPv4 can be configured on the same interface.
- B. IPv4 and IPv6 can be configured on separate interfaces.
- C. IPv6 and IPv4 can be configured on the same interface.
- D. IPv4 and IPv6 can be configured on separate interfaces.

Answer: ([SHOW ANSWER](#))

NEW QUESTION: 73

SD-Access uses which two protocols to communicate with the network devices? (Choose two.)

- A. VRF and VNI
- B. VRF and VNI
- C. SD-Access and VNI
- D. VRF and VNI

Answer: D ([LEAVE A REPLY](#))

SD-Access uses which two protocols to communicate with the network devices? (Choose two.)

NEW QUESTION: 74

Which two statements are true regarding the configuration of a Cisco IOS router to support IPv6 and IPv4 dual-stack routing? (Choose two.)

- * 10.10.10.0/24 is a /24 network.
 - * 10.10.10.0/24 is a /24 network.
 - * 10.10.10.0/24 is a /24 network.
- Which of the following is true?
- A. BGP is not supported on this interface.
 - B. IPsec is not supported on this interface.
 - C. BGP is supported on this interface.
 - D. IPsec is supported on this interface.

Answer: B (LEAVE A REPLY)

NEW QUESTION: 75

Which of the following is true regarding the Dial-In and Dial-Out sessions?

The collector initiates a session to the device.	Dial-In
supports TCP, UDP, and gRPC.	
The device initiates a session to the collector.	Dial-Out
supports gRPC only.	

Answer:

The collector initiates a session to the device.	Dial-In
supports gRPC only.	
The device initiates a session to the collector.	Dial-Out
supports TCP, UDP, and gRPC.	

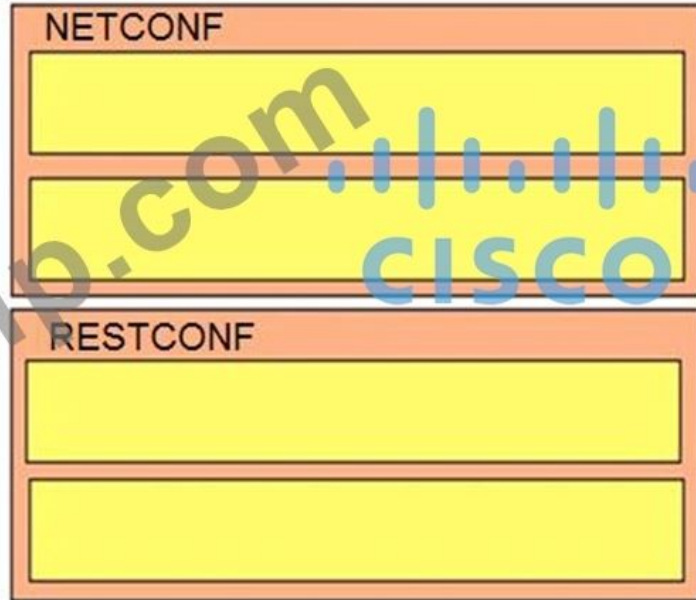
D. 12□ □□

Answer: B ([LEAVE A REPLY](#))

NEW QUESTION: 78

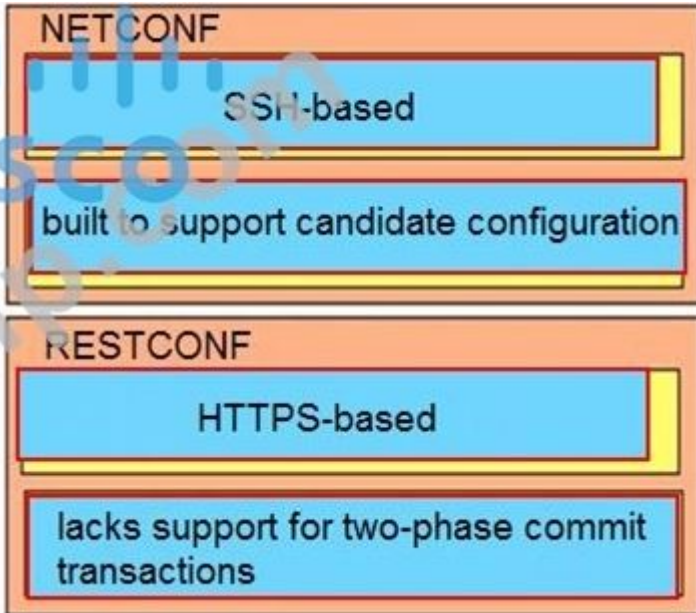
□□□ □□□□ □□□□□ □□□□ □□□□□ □□□ □□□□.

- HTTPS-based
- SSH-based
- built to support candidate configuration
- lacks support for two-phase commit transactions



Answer:

- HTTPS-based
- SSH-based
- built to support candidate configuration
- lacks support for two-phase commit transactions



□□:

https://www.cisco.com/c/en/us/td/docs/ios-xml/ios/prog/configuration/166/b_166_programmability_cg/b_166_programmability_cg_chapter_01011.html

https://www.cisco.com/c/en/us/td/docs/ios-xml/ios/prog/configuration/169/b_169_programmability_cg/configuring_yang_datamodel.html

https://www.cisco.com/c/en/us/td/docs/ios-xml/ios/prog/configuration/169/b_169_programmability_cg/configuring_yang_datamodel.html

https://www.cisco.com/c/en/us/td/docs/ios-xml/ios/prog/configuration/169/b_169_programmability_cg/configuring_yang_datamodel.html

NEW QUESTION: 79

□□□□□ XML □□□ □□ YANG□ □□□□ □□ □□□□ Cisco IOS XE □□□□ □□□□ □□□.

* □□□□□ GigabitEthernet2/1/0□ □□□ IP □□ 10.10.10.10/27

* □□ □□□ □□□ 10.10.10.1/27□□ □□
□□□□□ □□□□ □□ YANG □□□ □□ □□□ □□□□□?

A)

```
<interfaces xmlns="urn:ietf:params:xml:ns:yang:ietf-interfaces">
  <interface>
    <name>GigabitEthernet2/1/0</name>
    <type xmlns:ianaift="urn:ietf:params:xml:ns:yang:iana-if-type">ianaift:ethenetCsmacd</type>
    <enabled>>false</enabled>
    <ipv4 xmlns="urn:ietf:params:xml:ns:yang:ietf-ip">
      <address>
        <ip>10.10.10.10</ip>
        <netmask>255.255.255.224</netmask>
      </address>
    </ipv4>
  </interface>
</interfaces>
```

B)

```
<interfaces YANG="urn:ietf:params:xml:ns:yang:ietf-interfaces">
  <interface>
    <name>GigabitEthernet2/1/0</name>
    <type YANG:ianaift="urn:ietf:params:xml:ns:yang:iana-if-type">ianaift:ethernetCsmacd</type>
    <enabled>>true</enabled>
    <ipv4 YANG="urn:ietf:params:xml:ns:yang:ietf-ip">
      <address>
        <ip>10.10.10.10</ip>
        <netmask>255.255.255.224</netmask>
      </address>
    </ipv4>
  </interface>
</interfaces>
```

C)

```
<interfaces json="urn:ietf:params:json:ns:yang:ietf-interfaces">
  <interface>
    <name>GigabitEthermet2/1/0</name>
    <type json:ianaift="urn:ietf:params:json:ns:yang:iana-if-type">ianaift:ethernetCsmacd</type>
    <enabled>>true</enabled>
    <ipv4 json="urn:ietf:params:json:ns:yang:ietf-ip">
      <address>
        <ip>10.10.10.10</ip>
        <netmask>255.255.255.224</netmask>
      </address>
    </ipv4>
  </interface>
</interfaces>
```

D)

```

<interfaces xmlns="urn:ietf:params:xml:ns:yang:ietf-interfaces">
  <interface>
    <name>GigabitEthernet2/1/0</name>
    <type xmlns:ianaift="urn:ietf:params:xml:ns:yang:iana-if-type">ianaift:ethernetCsmacd</type>
    <enabled>true</enabled>
    <ipv4 xmlns="urn:ietf:params:xml:ns:yang:ietf-ip">
      <address>
        <ip>10.10.10.10</ip>
        <netmask>255.255.255.224</netmask>
      </address>
    </ipv4>
  </interface>
</interfaces>

```

- A. D
- B. B
- C. C
- D. A

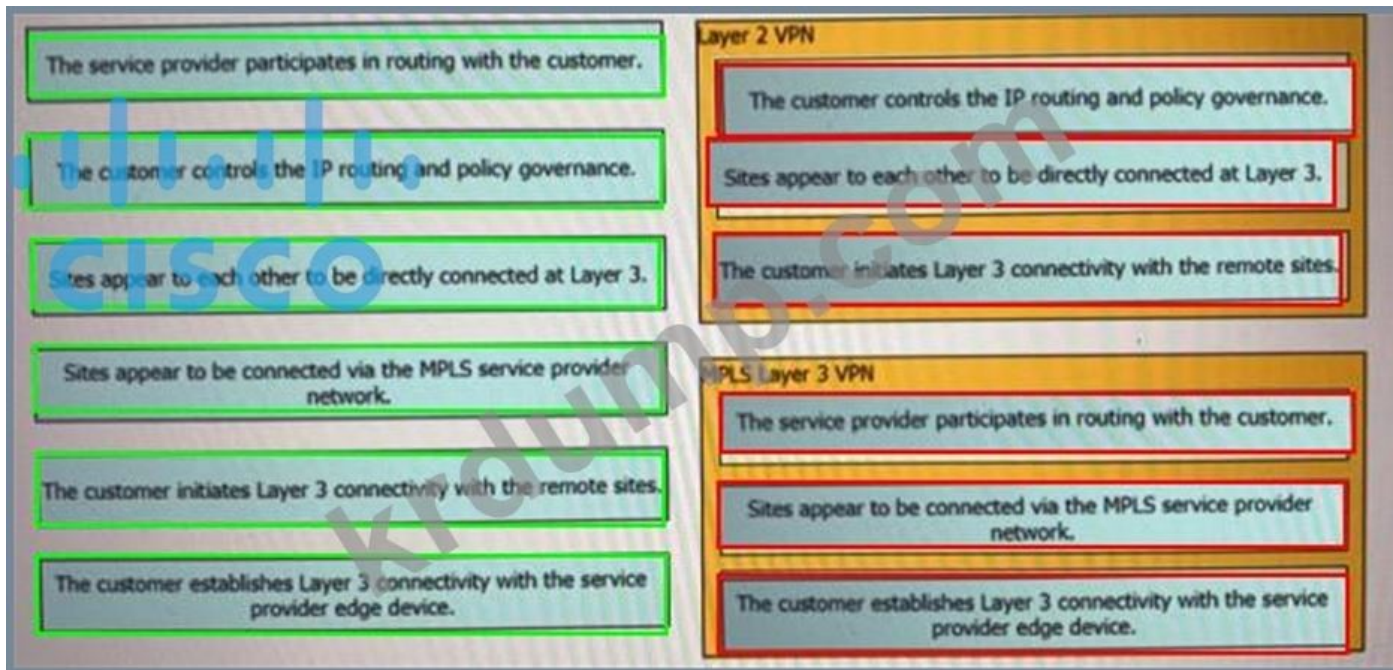
Answer: A ([LEAVE A REPLY](#))

NEW QUESTION: 80

VPN .



Answer:



NEW QUESTION: 81

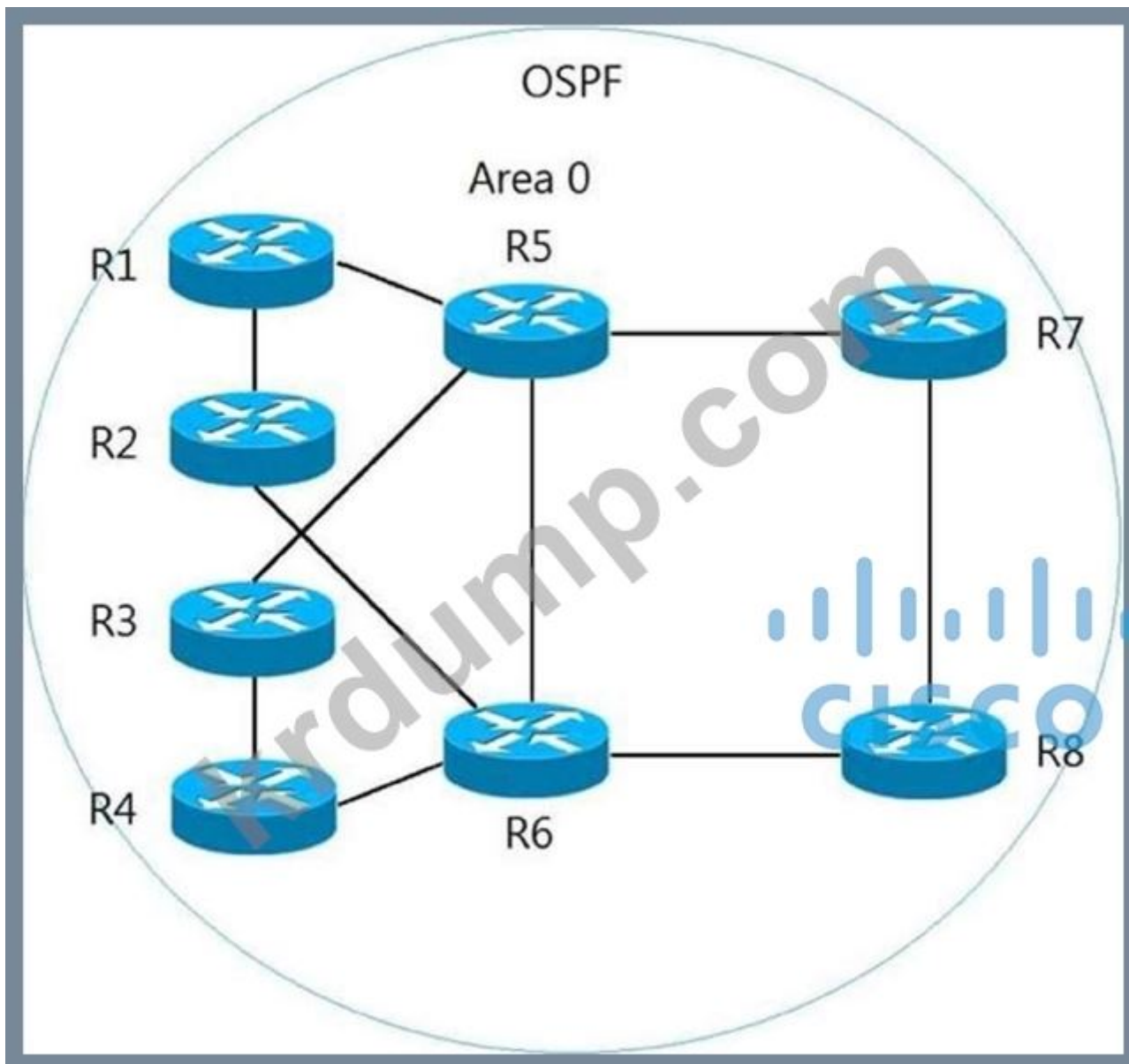
Which two SD-WAN components are used to manage network traffic? (Choose two.)

- A. SD-WAN, MPLS
- B. SD-WAN, TLOC
- C. SD-WAN, TLOC
- D. SD-WAN, MPLS

Answer: (SHOW ANSWER)

SD-WAN, TLOC

NEW QUESTION: 82



Which two routers are ABRs for Area 0? (Choose two.)

- A. R3 and R4
- B. R1 and R2
- C. R3 and R4
- D. R1, R2, R3, and R4
- E. R5 and R6

Answer: A,E (LEAVE A REPLY)

NEW QUESTION: 83

Cisco SD-Access uses which protocol to communicate between controllers?

- A. BGP
- B. OSPF
- C. IS-IS

D. □□□□ □□□□ □□ □□□□ □□ □□□□ □□□□□□ □□

Answer: B ([LEAVE A REPLY](#))

<https://www.cisco.com/c/en/us/td/docs/solutions/CVD/Campus/cisco-sda-design-guide.html>

NEW QUESTION: 84

□□□ □□ □□□ □□ □□□ □□□ □□ □□□□ □□□ □□□ □□ □□□ □□□□□□ □□□. □
□ □□□□ □□□ □□□ □□□ □□□□ □□□ □□□□ □□□□□?

A. IPFIX

B. □□ □□ □□

C. □□ □□ □□

D. □□ □□

Answer: ([SHOW ANSWER](#))

□□: □□□

□□

□□/□□:

NEW QUESTION: 85

SD-Access □□□□□□ □□□ □□ □□□ □□□□ □□□ □□□□□?

A. SGT□ □□□□ VXLAN □□□ □□□ □□□ □□□

B. □□ □□□ □□ □□ □□ IP □□ □□

C. EID□ RLOC□ □□

D. HTDB□ □ □□□□□ □□

Answer: ([SHOW ANSWER](#))

NEW QUESTION: 86

□□□ □□□□□. □□□□ □□ □□□□□□ □□□□□ □□ □□ □□□ □□□□ STP □□ □□□ □□□
□□□ □□□□□. □□□□ □□ □□□ □□□□ Gi1/0/1-10□ □□ □□□ □□□ □□□?

A. □□ □□

B. □□□□□

C. □□□□□□

Answer: B ([LEAVE A REPLY](#))

NEW QUESTION: 87

IPv4 □□ □□□□ □□□□□ □□□□ □□□ IPv4 □□□□ □□□□ □□□□□ IPv6 □□□ □□□□□□ □
□□. □□□ IPv4 □□□□ IPv6 □□□□□ □□□□□□□ □□ IPv4 □□□□□ □□□ □□□□□. □□□ □
□ □□□ □□□□ □□□□□ □□□□□?

A. □□ □□

B. 6VPE

C. 6to4

D. NAT64

Answer: ([SHOW ANSWER](#))

□□: □□ □□ □□ □ □□□ □□□

NEW QUESTION: 88

□□□□□ □□□□□□□□ □□□□□ □□□ □□□□ □□□ □□□ □ □□ □□ □□□□ □□ □□ □□□ □□□□ □□□ □ □□□ □□ QoS □□□□ □□□ □□□□ □□□. □□□□□□□□ □□ □ □□□ □ □□ □□□□ □□□□□. □□ QoS □□□□ □□□ □□□ □□ □□□ □□□□□?

- A. DiffServ
- B. LLQ
- C. WRED
- D. IntServ

Answer: D (LEAVE A REPLY)

□□: □□□□ □□□

NEW QUESTION: 89

□□□ □□□ ISP□ □□ □ □□ □□□ □□ □□ □□□□□ BGP□ □□□□ □□□□. ISP□ □□ □ □□□ □ □□□□ □□ □□□□□□ □□ BGP □□□ □□□□□?

- A. □□□
- B. AS-□□ □□
- C. □□ □□ □□ □□
- D. □□ □ □□ □□

Answer: (SHOW ANSWER)

NEW QUESTION: 90

□□□ □□□ □□□□ Cisco SD-WAN □□□□□□ □□□□ □□□□ □□□ □□□□.

vManage

performs the initial authentication of WAN Edge devices

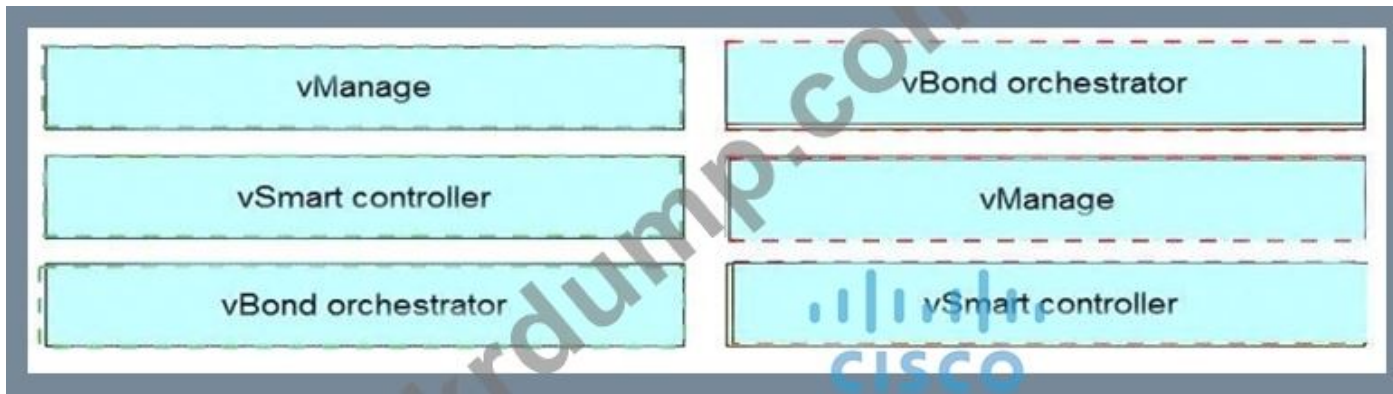
vSmart controller

provides a GUI interface to monitor, configure, and maintain the SD-WAN devices

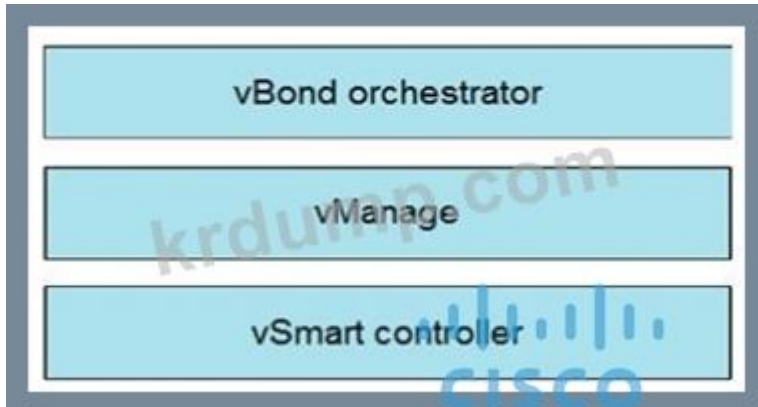
vBond orchestrator

responsible for the control plane

Answer:

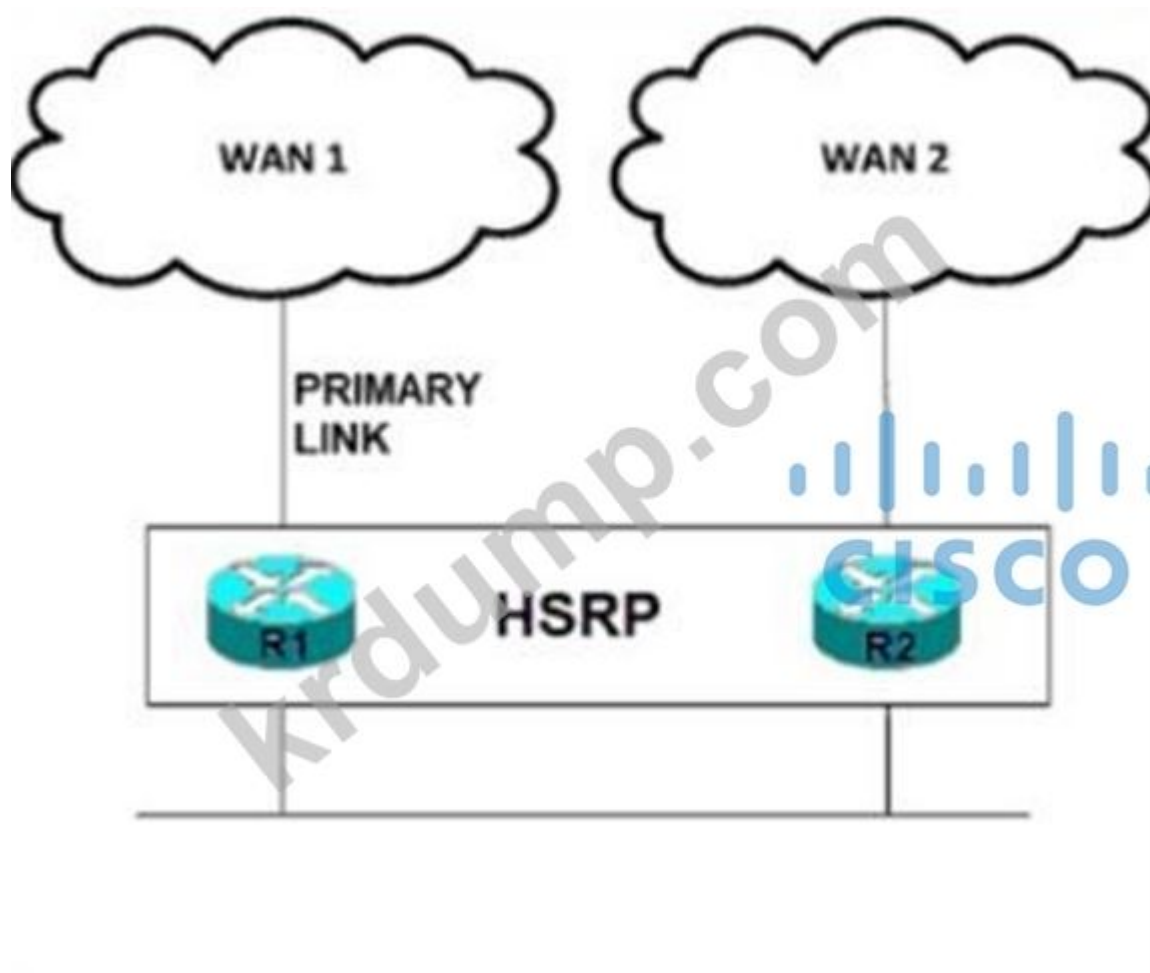


□□



□□□□ □□□ □□□ □□

NEW QUESTION: 91



□□□ □□□□□. □□□□□ □□ □□ □□ □□□□ □□□□ □□□. □□□□ HSRP□ WAN 1 □□□ □□
 □□ □□ □□ □□□ □□□□ □□□ R2□ □□ HSRP □□□□ □□ □ □□□ □□ □□□. □□□□□ □□
 □ □□ □□□□ □□□□ □□□□? (2□□ □□□□□.)

- A. IP □□ □□□ □□
- B. □□ □□ □□ □□
- C. □□□ R1□□ □□□ □□ □□ □□
- D. □□□ R1□□ IP SLA □□
- E. □□□ R1□□ PBR □□

Answer: C,D ([LEAVE A REPLY](#))

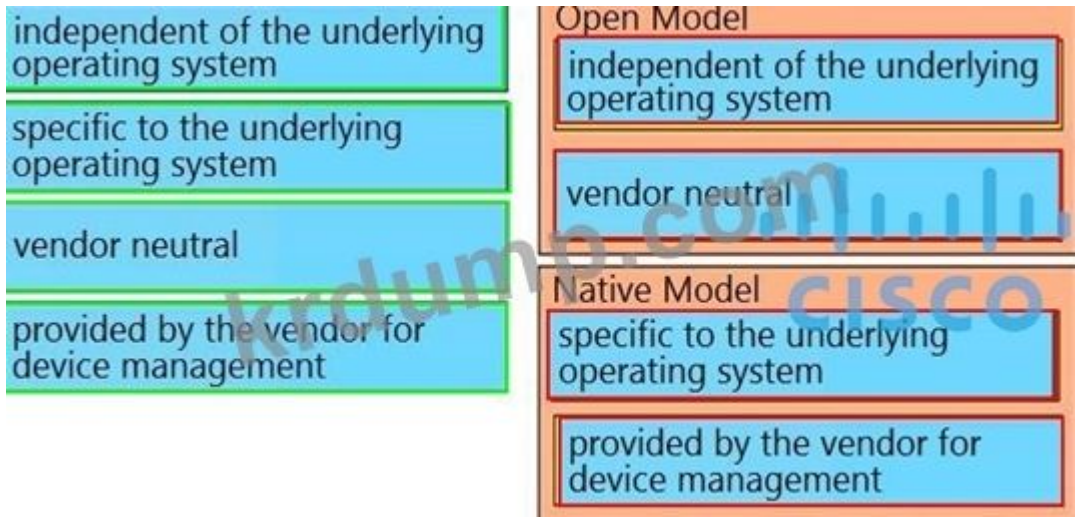
300-420 □□ □□□ □□□□□ □□ DumpTop □□ □□□□ □□□ 300-420 □□! DumpTop □ □□
 300-420 □□ □□□ □□□□□□, DumpTop 300-420 □□ □□□ □□□□□□□□□ □□□ □□□□□□□□.
 □□□□ □□□ □□□□ □□ DumpTop 300-420 □□□ □□□□□.
<https://www.dumptop.com/Cisco/300-420-dump.html> (341 Q&As Dumps, **30%OFF** Special Discount:
KrDump)

NEW QUESTION: 92

□□□ □□□ □□□□□ □□□□ Yang □□□ □□□ □□□□.

independent of the underlying operating system	Open Model
specific to the underlying operating system	
vendor neutral	Native Model
provided by the vendor for device management	

Answer:



NEW QUESTION: 93

Which of the following is a characteristic of an Open Model? (Choose two.)

- A. It is specific to the underlying operating system.
- B. It is vendor neutral.
- C. It is provided by the vendor for device management.
- D. It is independent of the underlying operating system.
- E. It is specific to the underlying operating system.

Answer: B,E (LEAVE A REPLY)

Explanation: The Open Model is vendor neutral and independent of the underlying operating system.

NEW QUESTION: 94

Which of the following is a characteristic of an Open Model? (Choose two.)

- A. OpenConfig
- B. IETF
- C. IEEE NETCONF
- D. YANG

Answer: (SHOW ANSWER)

NEW QUESTION: 95

Which of the following is a characteristic of an Open Model? (Choose two.)

- A. It is vendor neutral.

B. □□ □□□

C. □□ □

Answer: B ([LEAVE A REPLY](#))

NEW QUESTION: 96

Cisco SD-Access □□□□ □□□□□ □□□ □□ □□□ □□□□□?

A. □□□ DNA □□

B. □□ □□

C. □□ □□

D. □□ □□

Answer: ([SHOW ANSWER](#))

NEW QUESTION: 97

IPv6 □□□□ □□□ □□□ □ □□□□ □ □□ □□□ □□□□□?

A. □□□ IPv6 □□□□□ □□□□ □□□□ □□□ □□ IPv6 □□□□ □□□□□□ □ □ □□□□.

B. □□□□ □□□ □□□□ □□□□ □□ □□ □□□□ □□□□□ □□□.

C. □□□□ □□□ □□ □□ □□□ □□□ □ □□□ IPv6 □□□□ □□□ □□□□□.

D. □□□□ □□□□ IPv6 □□□ □□□ □□□□ □□ IPv4 □□□ IPv6 □□□□ □□□□□□.

Answer: B ([LEAVE A REPLY](#))

<https://www.cisco.com/c/en/us/td/docs/ios-xml/ios/interface/configuration/xr-3s/ir-xr-3s-book/ip6-ip4-gre-tunls-xr.pdf>

NEW QUESTION: 98

□□□□□ □□ IPv4 IS-IS □□□□□□□ IPv6□ □□□ □ □□□ □□□ □□□ □□□□. IPv4 □ IPv6 □□□ □□ □□□ □□□□ □□□□□□□ □ □□□□□ □□ □□□ □□□ □□□ □□□ □□□□□. □□ IS-IS □□□ □□□□□?

A. □□ □□□ □□□□□ □□ □□ □□□□

B. □□ □□□ □□□□ □□ □□□□

C. □□ □□□ □□□□ □□ □□□□

D. □□ □□□ □□□□□ □□ □□ □□□□

Answer: ([SHOW ANSWER](#))

https://www.cisco.com/c/en/us/td/docs/ios-xml/ios/iproute_isis/configuration/15-mt/irs-15-mt-book/ip6-route-multi-isis.html

NEW QUESTION: 99

□□□ □□ Layer 2 □□□□ Spanning Tree 802.1d□ □□□□ □□□ □□ □□ □□ □□ □□□□□ □ □□□ □□□□□. □□□□ □□ □□□ □□□□ □□ Layer 2 □□□□ □□□□□ □□□. □□□□ □□□ □□ □□ □□□□ □□□□ □□ □□ □□□□ □□□□ □□ □□ □□□□ □□□□ □□□□ □□□□□? (2□□ □□□□□.)

The first part of the question is a series of boxes, likely representing a command sequence or a list of options. The text is mostly illegible due to the box format, but it appears to be related to network configuration commands.

GLBP is a Cisco protocol for load balancing and redundancy. It is often compared to HSRP and VRRP.

The first part of the question is:

The second part of the question is:

The third part of the question is:


The fourth part of the question is:

The fifth part of the question is:

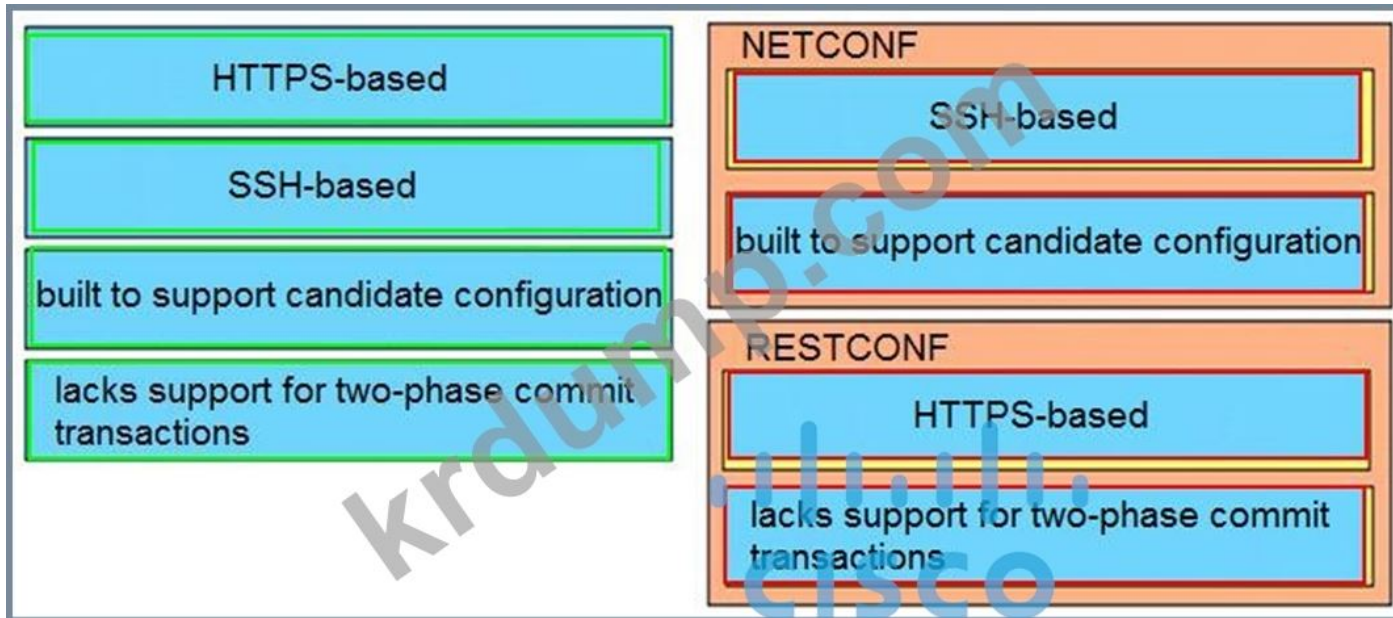
The sixth part of the question is:

NEW QUESTION: 103

The question asks for the correct answer based on the provided options.

HTTPS-based	NETCONF 
SSH-based	
built to support candidate configuration	
lacks support for two-phase commit transactions	
	RESTCONF

Answer:



□□:

https://www.cisco.com/c/en/us/td/docs/ios-xml/ios/prog/configuration/166/b_166_programmability_cg/b_166_programmability_cg_chapter_01011.html

https://www.cisco.com/c/en/us/td/docs/ios-xml/ios/prog/configuration/169/b_169_programmability_cg/configuring_yang_datamodel.html

https://www.cisco.com/c/en/us/td/docs/ios-xml/ios/prog/configuration/169/b_169_programmability_cg/configuring_yang_datamodel.html

https://www.cisco.com/c/en/us/td/docs/ios-xml/ios/prog/configuration/169/b_169_programmability_cg/configuring_yang_datamodel.html

NEW QUESTION: 104

□□□ □□□□□. □□□ GigabitEthernet0/2 □□□□□□ □□□□ □□□□ □□ □□□□ QoS□ □□□□ □□□. 8□□ □□□ □□□□ □□ □□ □□□□ □ □□ □□□ □□ □□□ □□□□ □□□. □□□ □□ □□ □□□□ □□□?

- A. DSCP CS2□ □□ □□□□ □□□□ ROUTING □□□□ □□□□□. □□ □□ □□ □□□ □□□ □□□□ □□ □□□□ ROUTING □□□□ □□□□□□ □ □□□ □□□□□.
- B. DSCP CS5□ □□ □□□□ □□□□ □□ SIGNALING □□□□ □□□□□. □□ □□ □□ □□□ □□□ □□□ □□□□ SIGNALING □□□□ □□ □□□□ □□□□□□ □ □□□ □□□□□.
- C. DSCP CS4□ □□ □□□□ □□□□ SIGNALING □□□□ □□□□□. □□ □□ □□□ □ □□□□ □□ □□ □□□□□.
- D. DSCP CS6□ □□ □□□□ □□□□ ROUTING □□□□ □□□□□. □□ □□ □□□ □ □□□□ □□ □□ □□□□□.

Answer: (SHOW ANSWER)

300-420 □□ □□□ □□□□□ □□ DumpTop □□ □□□□ □□□ 300-420 □□! DumpTop □ □□
 300-420 □□ □□□ □□□□□□, DumpTop 300-420 □□ □□□ □□□□□□□□□ □□□ □□□□□□□□.
 □□□□ □□□ □□□□ □□ DumpTop 300-420 □□□ □□□□□.
<https://www.dumptop.com/Cisco/300-420-dump.html> (341 Q&As Dumps, 30%OFF Special Discount: KrDump)