

CheckPoint.156-215.81.v2023-04-21.q140

□□□□:	156-215.81
□□□□:	Check Point Certified Security Administrator R81
□□□:	CheckPoint
□□ □□ □□□:	140
□□:	v2023-04-21
# □□ □:	2402
# □□ □□□:	1400
https://www.krdump.com/CheckPoint.156-215.81.v2023-04-21.q140.html	

NEW QUESTION: 1

□□ □□□□ □□□ Security Management Server □ □□□ □ □□□□?

- A. □, □□□ □□ □ □ □□ □□□ □□ □ □□□□□ □□□□.
- B. □, □□ □□□□ □□□ □□□ □□□ □□ □□□□ □□□□ □□□□ □□□□□.
- C. □, □□ □□□□ □□□ □□□□ □□□ □□□ □ □□□□.
- D. □□□, □□□ □□□ □ □□□□.

Answer: B ([LEAVE A REPLY](#))

NEW QUESTION: 2

□□ □□□: Office □□□□ □□ □□□□□□ □□ □□□□□□ IP □□□ □ □ □□□□□□
_____.

- A. □□□□ □□□□ □□□□□.
- B. □□□ □□□ □□□
- C. □□□□ □□□ □□□□□.
- D. □□□□ □□

Answer: ([SHOW ANSWER](#))

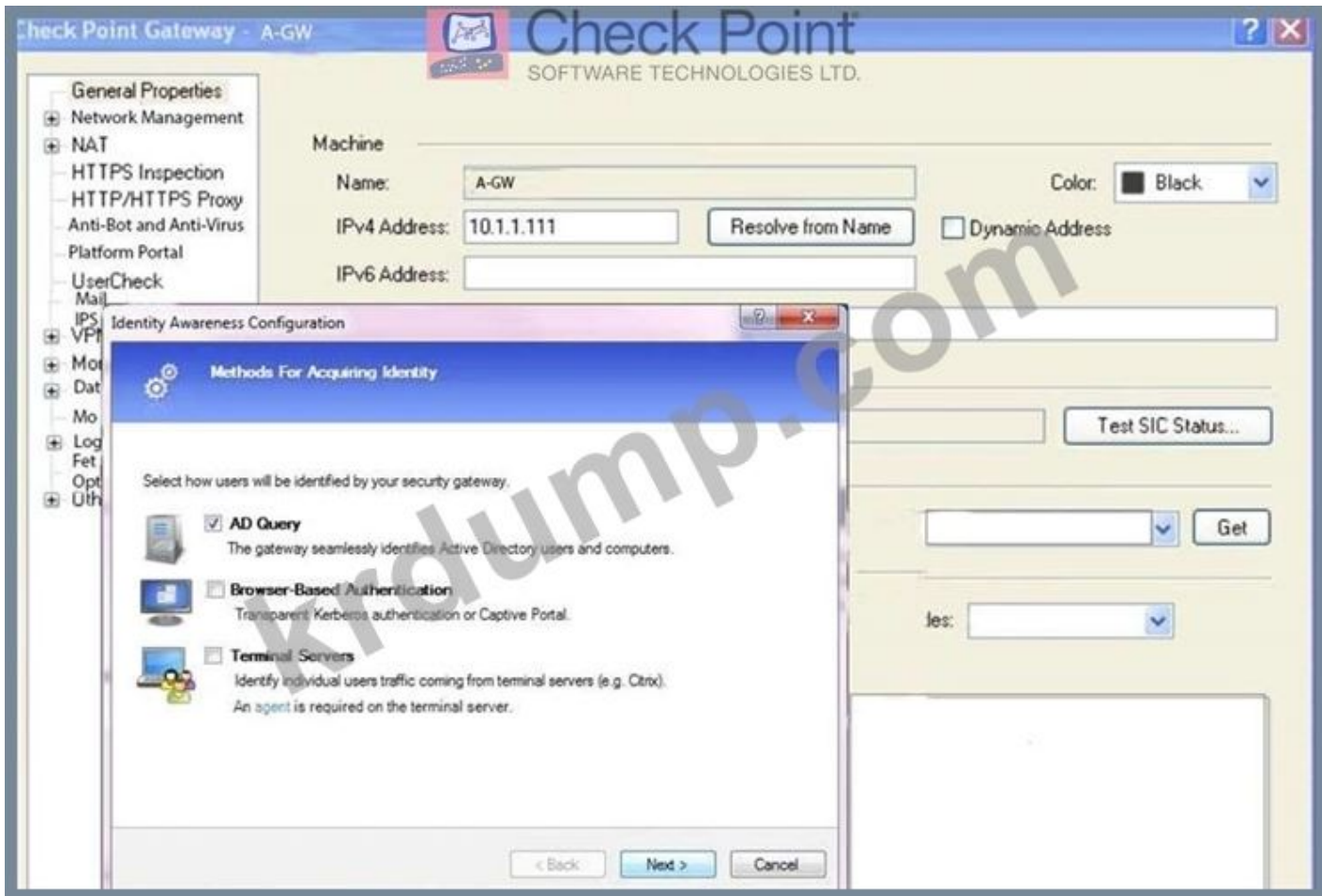
Office □□□ □□□□ □□ □□□□□□ □□ □□□□□□ IP □□□ □□□ □ □□□□. □□□□ □
□□□ □□□□ □□□ □□□□□. □□□□ □□□□ □□ □□ □□ □□□ □□□□□.

NEW QUESTION: 3

□□ □□□ □□ □□ □□ □□□□ □□ □□□ □□ □□□ □□□□ □□□ □□ □□□ □□ □□□
□□□ □□ □□□ □□□ □□□□.

- A. □□ □ □□□□ □□□ □□□ □□ □□□
- B. □□ □□□ □□□ □□ □□□
- C. □□□ □□ □□□□ □□□□ □□□ □□□ □□
- D. □□ □□□□ □□□

Answer: ([SHOW ANSWER](#))



"□□"□ □□□□ □□ □□□ □□□□□ □□□□□.

- A. Active Directory □□□ □□ □□□ Kerberos SSO
- B. Security Gateway□ □□□□□ □□□ □□□ □□□□□ Active Directory □□□ □ □□□□□ IP □□□ □□ □□□□ □ □□ Active Directory □□ □□
- C. Captive Portal □□ □□
- D. □□□□ □□ □ □□□ □□□□ □□□ □□ 443 □□ 80

Answer: (SHOW ANSWER)

□□ □□□ □□□□□□□:
ID □□ □□ □□□□ □□□□□.

NEW QUESTION: 9

□□ □ □□ □□□□□□ □□□□ □□□□□□ □□□□□□?

- A. □□ □ □□
- B. □□□ □ □□□ □ □□
- C. □□ □ □□
- D. □□ □ □□

Answer: B (LEAVE A REPLY)

□□□ □□ □□□□□□ □□ □□□ □□□ □ □□□ □□□□□ □□□(□□ □□□□). □□ B□ □ □□ □□□□□□.

NEW QUESTION: 10

NEW QUESTION: 15

Which of the following is a valid IP address for a host in a network?

- A. 192.168.1.1
- B. 192.168.1.0
- C. 192.168.1.255
- D. 192.168.1.1000

Answer: (SHOW ANSWER)

NEW QUESTION: 16

Which of the following is a valid IP address for a host in a network?

- A. 192.168.1.1
- B. SmartView 192.168.1.1
- C. 192.168.1.1
- D. SmartView 192.168.1.1

Answer: B (LEAVE A REPLY)

156-215.81 is a dump of the SmartView configuration of a CheckPoint device. DumpTop 156-215.81! DumpTop 156-215.81 is a dump of the SmartView configuration of a CheckPoint device, DumpTop 156-215.81 is a dump of the SmartView configuration of a CheckPoint device. DumpTop 156-215.81 is a dump of the SmartView configuration of a CheckPoint device.

<https://www.dumpstom.com/CheckPoint/156-215.81-dump.html> (414 Q&As Dumps, **30%OFF Special Discount: KrDump**)

NEW QUESTION: 17

- A. 192.168.1.1
- B. 192.168.1.0
- C. 192.168.1.255
- D. 192.168.1.1000

Answer: (SHOW ANSWER)

NEW QUESTION: 18

Which of the following is a valid IP address for a host in a network?

- A. 192.168.1.1
- B. 192.168.1.0
- C. 192.168.1.1
- D. 192.168.1.1

Answer: (SHOW ANSWER)

NEW QUESTION: 19

Which of the following is a valid POP3 command? POP3 commands are used to retrieve mail from a POP3 server. Which of the following is a valid POP3 command?

- A. POP3 USER user
- B. POP3 USER user
- C. POP3 USER user
- D. POP3 USER user (POP3, IMAP or SMTP) user

Answer: (SHOW ANSWER)

NEW QUESTION: 20

SmartConsole is a web-based interface for managing Palo Alto Networks firewalls. Which of the following is a valid SmartConsole command?

- A. Global GET /api/
- B. GET /api/
- C. GET /api/
- D. Global one GET /api/

Answer: B (LEAVE A REPLY)

NEW QUESTION: 21

IT professionals are configuring a Check Point R80 Management server. Which of the following is a valid R80.30 Gaia command to configure the R80.30 Gaia Management server?

- A. R80 Management R80 Management Check Point Gateway
- B. R80 Management R80 Management Check Point Gateway
- C. R80 Management R80 Management Check Point Gateway
- D. R80 Management R80 Management Check Point Gateway

Answer: A (LEAVE A REPLY)

Compatibility with Gateways

R80 Management Servers can manage gateways of these versions:

Release	Version
Security Gateway	R75.20, R75.30, R75.40, R75.45, R75.40VS, R75.46, R75.47, R76, R77, R77.10, R77.20, R77.30
Security Gateway 80	R71.45, R75.20.x
1100 Appliance	R75.20.x, R77.20.x
1200R Appliance	R77.20.x
UTM-1 Edge	7.5.x and higher (Edge-X and Edge-W are not supported)

NEW QUESTION: 22

Which of the following is a valid command to check the status of the Captive Portal?

- A. `show capture`
- B. `show capture status`
- C. `show capture status all`
- D. `show capture status`

Answer: A ([LEAVE A REPLY](#))

NEW QUESTION: 23

Which of the following is a valid command to check the status of the firewall?

- A. `fw ctl pst pstat`
- B. `fw ctl pstat`
- C. `fw conn all`
- D. `fw ctl pstat`

Answer: ([SHOW ANSWER](#))

NEW QUESTION: 24

Which of the following is a valid command to check the status of the VRRP?

- A. `show vrrp status`
- B. `show vrrp status all`
- C. `show vrrp status all`
- D. `show vrrp status`

Answer: ([SHOW ANSWER](#))

NEW QUESTION: 25

R77 `upgrade_export` command is used to export the upgrade information to a file. Which of the following is a valid command to export the upgrade information to a file?

- A. `upgrade_export`

- B. □□□□□ □□□□
- C. □□ □□
- D. □□□□□ □□

Answer: [\(SHOW ANSWER\)](#)

NEW QUESTION: 29

□□ □□□: Security Gateways R75 □□□□ SIC□ □□□□ □□ _____ □ □□□□□.

- A. AES-256
- B. DES
- C. AES-128
- D. 3DES

Answer: C ([LEAVE A REPLY](#))

NEW QUESTION: 30

□□□□ IPS □□□ "□□ □□□□" □□□ □□□□ SmartConsole□□ IPS□ □□□□□□□ □□□. □□□□□ □□□□□ □□ □□□ □□□ □□□□ □□□□□?

- A. □□ □□□□□
- B. SmartConsole□ □□□ □□
- C. SMS
- D. □□□ □□□

Answer: B ([LEAVE A REPLY](#))

□□□□ IPS □□□□□
 □□□ □□ □□□ □□□ IPS □□□□□ □□ □□ □□ □□□□ IPS□ □□ □□□□□ □ □□□□.
 Internet Explorer □□□ □□□□ □□□□ □□ □□□□ IPS□ □□□□ □□□□□ □ □□□□.
 IPS □ □□□□□ □□ □□ □□ □□□ □□□□□ □□□□□:
 LAN □□ □□ □□□□□.
 Internet Explorer □□□ □□□ □□ □□□ □□□□□□.
 □□ □□□ □□ □ □□ □□□ □□□□□ □□□□□ □□□ □□ □□ □□ □□□□ □□ □□ □ □□
 □□□ □ □ □□ □□□ □□□□□.

NEW QUESTION: 31

TCP/IP □□□ □□ □□□ □□□ □□□□□?

- A. □□□ □□□□ □□□□ □□ □□□□□□□□ □□□□□ □ □□□ □□ □□□ □□□ □□□□□.
- B. □□□□ □□□□ □□ □□ □□ □□□ □□ □□□ □□□□□□□ □□□□□.
- C. □□□□ □□ □□□□ □□□□ □ □□□□ □□□□□ □□□ □□□□□ □□ □□□□ □□□ □ □□□□ □□□ □□□□□.
- D. □□□□ □□□ □□□ □□ □□□ □□ □□□ □□□ □□ □□□□ □□□ □□□□□.

Answer: A ([LEAVE A REPLY](#))

Answer: D ([LEAVE A REPLY](#))

□□□

WebUI □ CLI□ □□□□ □□□ □□□ □□□□□. □□□ □□□ □ □□□□.

NEW QUESTION: 36

□□ □□□: □□□□ □□ □□□□□ □□□ □□□ □□□ □□ □□ □□□ □□ □□□ _____□
□□. □□□ □□ □□□□ □□ □□ □□□□ □□ □□□ □□ □□□□ _____□□□.

- A. □□; □□□□
- B. □□□□; □□
- C. □□□□□. □□□□
- D. □□□□□. □□

Answer: ([SHOW ANSWER](#))

NEW QUESTION: 37

□□ □ □□□□□ URL □□□ □ □□□□□□ □□ □□□□□ □□□ □□ □□□ □□□□□?

- A. UserCheck□ □□□□ □□ □□□□□ □□□ □□ □□□ □□□□□ □□ □□□□ □□□ □ □□ □ □□□.
- B. □□ □□ □□□□, □□ □ □□ □□□ □□ □□ □□□□ □ □□□ □□□□ □□□□□ □□□□ □□□□ □□□□.
- C. □□□ □□□ □□ □□□ □□ □□ □□□ □□□□ □□□□ □□□□ □□□ □□□□□.
- D. □□□□ □□□ □□ □□ □□ □□ □□□ □□□□ □□□□ □□□□ □□□□□.

Answer: D ([LEAVE A REPLY](#))

NEW QUESTION: 38

□□ □□ □□ □□ □□ □□□ □□ □□□ □□□ □□ □□□□ □□□□ □□□ □□□□□?

- A. □□ □□□ □□□ □□□□ □□□ □□□□□.
- B. □□ Check Point □□ □□
- C. □□ □□
- D. □□ □□□□□ □□ □□

Answer: A ([LEAVE A REPLY](#))

NEW QUESTION: 39

□□□ □□ □□□ □□□ □□□□□?

No.	Hits	Name	Source	Destination	VPN	Service	Action	Track
1	0	NetBIOS	Any	Any	Any Traffic	NBT	drop	None
2	0	Management	webSingapore	fwsingapore	Any Traffic	ssh https	accept	None
3	0	Stealth	Any	fwsingapore	Any Traffic	Any	drop	Log
4	0	User Auth	Any	webSingapore	Any Traffic	http	User Auth	Log
5	0	Partner City	net_singapore net_rome net_singapore net_sydney	net_rome net_singapore	rome_singapore	http	accept	Log
6	0	Network Traffic		Any	Any Traffic	http dns icmp-proto ftp https	accept	Log
7	0			Any	Any Traffic	Any	drop	Log

- A. 5
- B. 6
- C. 4
- D. 3

Answer: D (LEAVE A REPLY)

NEW QUESTION: 40

R80 is configured with the following NAT rule:

- A. The rule is configured to allow traffic from the Internet to the R80's internal interface.
- B. The rule is configured to allow traffic from the R80's internal interface to the Internet.
- C. The rule is configured to allow traffic from the R80's internal interface to the Internet via HTTP.
- D. The rule is configured to allow traffic from the Internet to the R80's internal interface via HTTP.

Answer: (SHOW ANSWER)

NEW QUESTION: 41

R77.X is configured with the following NAT rule:

- A. The rule is configured to allow traffic from the R77.X's internal interface to the Internet via HTTP.
- B. The rule is configured to allow traffic from the R77.X's internal interface to the Internet via 1Gbps.
- C. The rule is configured to allow traffic from the R77.X's internal interface to the Internet via HTTPS.
- D. The rule is configured to allow traffic from the R77.X's internal interface to the Internet via any service.

Answer: (SHOW ANSWER)

NEW QUESTION: 42

R77.X is configured with the following NAT rule:

- A. The rule is configured to allow traffic from the R77.X's internal interface to the Internet via Kerberos.
- B. The rule is configured to allow traffic from the R77.X's internal interface to the Internet via any service.
- C. The rule is configured to allow traffic from the R77.X's internal interface to the Internet via any service.
- D. The rule is configured to allow traffic from the R77.X's internal interface to the Internet via any service.

Answer: A ([LEAVE A REPLY](#))

NEW QUESTION: 43

□□ □ □□ □□□ □□□□ □□□ □□ □□□□□?

- A. □□ □□□□ □□□ □□ □□
- B. □□ □□ □ □□□ □□□ □□ □□ □□□ □□
- C. □□□ □□□ □□□□□.
- D. □□ □□□□ □□□ □□ □□□ PDF □□ □□

Answer: ([SHOW ANSWER](#))

NEW QUESTION: 44

□ □□□ □ □□□□□ □□ □□ □□ □□□ □□□□□□.

No.	Hits	Name	Source	Destination	VPN	Service	Action	Track	Install On
1	0	Authentication	Customers@Any	Any	Any Traffic	http ftp telnet	Client Auth	Log	Policy Targets
2	0		Any	Any	Any Traffic	Any	drop	Log	Policy Targets

General Limits

Source:

Destination:

Apply Rule Only if Desktop Configuration Options are Verified

Required Sign On

Standard Specific

Sign On Method

Manual

Partially automatic

Fully automatic

Agent automatic Sign On

Single Sign On

Successful Authentication Tracking:

None Log Alert

gCheckPoint Cancel

□□ □□□□□□ □□ □□□ □ □□□□ □ □□□□ □□ HTTP □□□ □□□□□. □□□□ □□□ □ □□□□ □□ □□□□ FTP□ □□□□ □□□ □□□? □□□:

- A. □□ □□□□□□□ □□□□□ □□ □□□ □□□□□.
- B. □□□□ □□ FTP □□□□□□ □□□□□ □□□□ □□□□□ □□□ □□ □□□ □□ □□ □□□ □□ □□□ □□□ □□□□.
- C. □□ 2□ □□ FTP □□□ □□□□□□□.
- D. □□□ □□□ □□□□ FTP □□□ □□□ □□□□□.

Answer: ([SHOW ANSWER](#))

NEW QUESTION: 45

□□ □ □□ □□ □□ □□□□?

- A. R80 □□ □□□□□□ □□□ □□□ □□□ □□□□ □□□□.
- B. □□□ □□□ □□□ □□ □□ □□ □□ □□□□□.
- C. □□□ □□□□ □□ □□□□ □□□ □ □□□□.
- D. □□□ □□□ □□□ □□ □□□ □ □□□ □ □ □ □□ □□□□.

Answer: C ([LEAVE A REPLY](#))

NEW QUESTION: 46

- □□□□□ □□□ □□□□□□. □□□ □ □□□ □□□□ □□□ □□□□□□?
- A. □□□□ □□□□ □□ □□□ □□□□□.
 - B. ISPO □□□□ □□□□ □□□□□□.
 - C. □□□□ □□ □□□□ □□□ □□□ □□□□□□.
 - D. □□ □□□□ □□□□ □□□□□□ □□ □□□ □□□□.

Answer: D ([LEAVE A REPLY](#))

156-215.81 □□ □□□ □□□□□ □□ DumpTop □□ □□□□ □□□ 156-215.81 □□! DumpTop □ □□ 156-215.81 □□ □□□ □□□□□□□, DumpTop 156-215.81 □□ □□□ □□□□□□□□ □ □□ □□□□□□□□. □□□□ □□□ □□□□ □□ DumpTop 156-215.81 □□□ □□□□□.

<https://www.dumptop.com/CheckPoint/156-215.81-dump.html> (414 Q&As Dumps, **30%OFF Special Discount: KrDump**)

NEW QUESTION: 47

- SmartConsole□ □□ □□ □□ □□□ □□ □□□□□ □□□ □□ □□□ □□□□□.
- A. Windows □□□□□□ □□ □□ □□ □□ □□□ □□□ □ □□□□.
 - B. SmartConsole □□□ □□ Security Management Server □□□ □□□ □ □□□□.
 - C. □□□ □□□ □□□ □□□□ □□□□.
 - D. Security Management Server□ /home/.fgpt □□□□ □□ SmartConsole □□□ □□□ □ □□□□.

Answer: B ([LEAVE A REPLY](#))

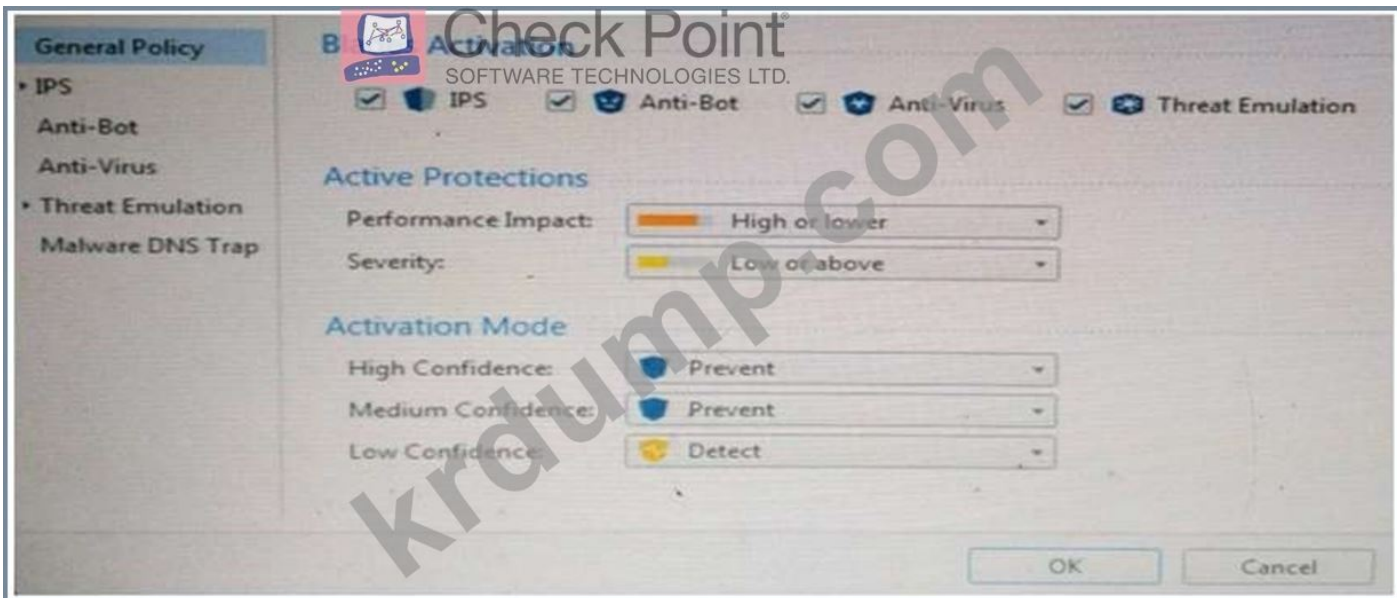
NEW QUESTION: 48

- □□ □□ □□□□ □□□□ □ □□ □□□ □□□□ □□□□□?
- A. □□□□ □ □□□□□□□ □□
 - B. □□□□□□ □□ □ URL □□□□
 - C. □□□□ □ □□ □□
 - D. URL □□□ □ □□□□

Answer: ([SHOW ANSWER](#))

NEW QUESTION: 49

- R80.10 □□□ □□□ □□□ □ □□ Check Point API □□□ □□□□□?
- A. □□ API, □□ □□ API, □□ □□ □ □□□ API □ OPSEC SDK API



Which of the following is the correct configuration for the Threat Emulation feature?

- A. High Confidence: Prevent, Medium Confidence: Prevent, Low Confidence: Detect
- B. High Confidence: Prevent, Medium Confidence: Detect, Low Confidence: Detect
- C. High Confidence: Detect, Medium Confidence: Detect, Low Confidence: Detect
- D. High Confidence: Prevent, Medium Confidence: Detect, Low Confidence: Prevent

Answer: (SHOW ANSWER)

NEW QUESTION: 54

Which of the following is the correct configuration for the Threat Emulation feature?

Status	Name	IP	Versi...	Active Bla...
	A-GW	10.1.1.1	R80	
	SMS	10.1.1.101	R80	

- A. SmartCenter: Management NIC, IP: 10.1.1.101, Version: R80, Active: Disabled
- B. SmartCenter: Management NIC, IP: 10.1.1.1, Version: R80, Active: Enabled
- C. VPN: Management NIC, IP: 10.1.1.1, Version: R80, Active: Enabled
- D. Security Gateway: Management NIC, IP: 10.1.1.1, Version: R80, Active: Enabled

Answer: B (LEAVE A REPLY)

- A. □□□ □□ □□□ □□ □□ □□ □□ □□□□□.
- B. □□ □□ HTTP□ □□□□ □ □□ □□□ Rule Base□ □□□□□.
- C. □□ □□□□ □□ □□□ □□ □□□ □□□□□□.
- D. □□□ □□ □□□ □□□□□ □□□□□ SecuRemote Client□ □□□□ □□□.

Answer: B ([LEAVE A REPLY](#))

NEW QUESTION: 58

ID □□□ □□□□ □□ □□□□□□ □□□ □□□□ ID □□□ □□□□□?

- A. □□
- B. □□ □□□ □ RADIUS
- C. □□ □□
- D. AD □□ □ □□□□ □□ □□

Answer: D ([LEAVE A REPLY](#))

Identity Awareness□ □□ □□ □□□□ ID□ □□□□□.

NEW QUESTION: 59

□□□□ □□□ □□ □□□ □□ □□□□ □□□ □ □□□ □□ CLI □□□□□ □□□□□?

- A. tcpdump
- B. fw □□□
- C. tcpdump /snoop
- D. □□□□□(□□□□□) □□ -□□

Answer: B ([LEAVE A REPLY](#))

NEW QUESTION: 60

□□ □□□□□ □□ □ □□ □□ □□ □□□ □□□□□?

- A. □□, □□ □□□ □ □□
- B. □□, □□□ □□ □ □□
- C. □□□ □□, □□ □ □□ □□□
- D. □□ □□□, □□ □ □□□ □□

Answer: B ([LEAVE A REPLY](#))

NEW QUESTION: 61

Joey□ IP □□□ 192.168.20.13□ □□□□ □□□□ □□□□. □□ IP □□□ 203.0.113.111□ □ □□ □□ □□□□□ "www.CheckPoint.com" □ □□□□ □□□□□□ □□□. □ □□□ □□□ Check Point Firewall□ □□□ □ □□□□?

- A. Check Point □□□□ □□ □□□ □□□□□□ □□□ □□□
- B. Check Point □□□□ Stateful Inspection □□□ □□□□ □□□ □□□ □□□ □□□□.
- C. □ □□ □□ - □ □□□ HTTP □□□□□□ □ □□□ DNS □□□□□□□.
- D. □ □□ □□ - □□□ □□□ □□ □□□ □□□□ □□□ □□ □ □□ □□.

Answer: ([SHOW ANSWER](#))

Answer: A ([LEAVE A REPLY](#))

NEW QUESTION: 66

CDT □□□□□ □□ □ □□ □□ □□□□□?

- A. R77.30□□ □□□ □□ □□□□□
- B. □□ □□□□□
- C. □□ HFA □ □□□□ □□
- D. □□ □□□ R80.10□□ □□□□□

Answer: B ([LEAVE A REPLY](#))

NEW QUESTION: 67

□□□ □ VPN □□□□ □□ □□□ □□□ _____□□□.

- A. □□□
- B. □□ □□□
- C. □□□□ VPN □□
- D. VPN □□□□□

Answer: C ([LEAVE A REPLY](#))

□□□ □ VPN

Site to Site VPN□ □□□ □□□□ VPN □□□□□. □ □□ □□ □□□□□□ □□□ □□□□ VPN □
□□ □□□□ □ □□□□ □ □□□ VPN □□□ □□□ □ □□□□. □□□ Security Gateway□ □□□
□ □□□ VPN □□□ □□□ □ □□□□.

NEW QUESTION: 68

□□ □ □□ □□□ □□□ □□ □□?

- A. □□□□□□ □□
- B. □□□ □□
- C. □□ □□
- D. □□□□

Answer: A ([LEAVE A REPLY](#))

NEW QUESTION: 69

Check Point □□□□□□□ □□ □□ □ □□ □□□□□□ □□ □□□□□□ □□□□ □□□ □ □ □
□□□. □□ □□□ □□□□ IP□ 192.168.80.200/24□ □□□□ □□ □□□□□□ 192.168.80.1□ □□
□ □ □□□□?

- A. □□ □□□□□ Mgmt ipv4-address 192.168.80.200 mask-length 24add static-route □□ nexthop □□
□□□ □□ 192.168.80.1 onsave □□ □□
- B. □□□□□ Mgmt ipv4-address 192.168.80.200 □□□ □□ 24set static-route □□ nexthop □□□□□
□□ 192.168.80.1 onsave □□ □□
- C. □□□□□ Mgmt ipv4-address 192.168.80.200 255.255.255.0add static-route 0.0.0.0.0.0.0.0 gw
192.168.80.1 onsave □□ □□

NEW QUESTION: 74

Which R8000 component is used for SmartConsole management and configuration?

- A. SmartConsole: cpconfig, cpconfig, cpconfig, cpconfig, cpconfig.
- B. cpconfig, cpconfig, cpconfig, cpconfig, cpconfig, cpconfig, cpconfig, cpconfig, cpconfig, cpconfig.
- C. Security Management Server WebUI, SmartDashboard: cpconfig, cpconfig, cpconfig, cpconfig, cpconfig.
- D. cpconfig, WebUI, cpconfig, cpconfig, cpconfig, cpconfig, cpconfig, cpconfig, cpconfig, cpconfig.

Answer: B (LEAVE A REPLY)

NEW QUESTION: 75

Which two components are used for SmartConsole management and configuration?

- A. cpconfig; cpconfig
- B. cpconfig; cpconfig
- C. cpconfig; cpconfig
- D. cpconfig; cpconfig

Answer: (SHOW ANSWER)

NEW QUESTION: 76

Which two components are used for SmartConsole management and configuration?

- A. Capsule Connect Layer3 VPN, Capsule Workspace, Capsule Workspace, Capsule Workspace, Capsule Workspace.
- B. Capsule Connect, Capsule Workspace, Capsule Workspace, Capsule Workspace, Capsule Workspace.
- C. Capsule Connect, Capsule Workspace, Capsule Workspace, Capsule Workspace, Capsule Workspace.
- D. Capsule Workspace, Capsule Workspace, Capsule Workspace, Capsule Workspace, Capsule Workspace.

Answer: A (LEAVE A REPLY)

156-215.81 CheckPoint DumpTop 156-215.81! DumpTop 156-215.81 CheckPoint, DumpTop 156-215.81 CheckPoint, DumpTop 156-215.81 CheckPoint, DumpTop 156-215.81 CheckPoint, DumpTop 156-215.81 CheckPoint.

<https://www.dumpst.com/CheckPoint/156-215.81-dump.html> (414 Q&As Dumps, **30%OFF Special Discount: KrDump**)

NEW QUESTION: 77

Which two components are used for SmartConsole management and configuration?

- A. cpconfig; cpconfig
- B. cpconfig; cpconfig
- C. cpconfig; cpconfig

D. □□□ □ □ □□□□□ □ □□□□□.

Answer: C ([LEAVE A REPLY](#))

□□□ □□ □□ □□□ □□□□ □□ □□□ □□ □□□□□.

□□ □□□□ □□□□ □□□ □□□ □□□ □□ □□□ □□□□ □□□□ □□□ □ □□□□.

NEW QUESTION: 78

Check Point API□ □□□□ □□□ □□□□□ □□□□ □□□ □□□□ CLI □□ □ □ □□□□ □□□ □ □□□ □□ □□□ □□□ □ □□□□.

A. □□□□ □□□□□ □□□□ □□□□ □□ □□

B. □□ □□□ □□□□ □□ □ □□□□ □□

C. □□ □□□□ □□□□ □□□□□ □□ □□□

D. □□□□□ □□□□ □□□□ □□□□ □□ □□□

Answer: ([SHOW ANSWER](#))

NEW QUESTION: 79

□□□□□ □□ □□□ □□□□□ □□ □□□□ □□□ □□□□□?

A. 256, 257

B. 259, 900

C. 8080, 529

D. 80, 256

Answer: B ([LEAVE A REPLY](#))

NEW QUESTION: 80

□□□□ □□□ □□□ □□□□ □□□□□ □□□□□?

A. □□□□ □□ □□□□

B. □□□□□□ □□□□

C. □□□□ □□□□ □□□□

D. □□□□ □□□□ □□

Answer: ([SHOW ANSWER](#))

NEW QUESTION: 81

SSL VPN□ IPSec VPN□ □□□ □□□□?

A. SSL VPN□ IKE □□ HTTPS□ □□□□ □□ IPSec VPN□ □□□□□□□□□□.

B. IPSec VPN□ □□ □□ □□□□ □□□□ SSL VPN□ □□□□□ □□□□ □□□□ □□□□□.

C. IPSec VPN□ 2□□ □□□ □□□□ □□□□. SSL VPN□ □□ □□□□□.

D. SSL VPN□ □□□ □□ VPN □□□ □□□□□ IPSec VPN□ □□□□ □□□□.

Answer: B ([LEAVE A REPLY](#))

NEW QUESTION: 82

NEW QUESTION: 86

□□ □□:

- A. □□□□□ □□ □□ □□□□ □□□ □□□□□.
- B. □□□□□ □□□□ □□ □□□ □□□ □□□□□.
- C. □□□□□ □□□□ □□□□ □□□ □□□□ □□ □□□ □□□□□.
- D. □□□□□ □□□□ □□□□ □□□ □□□□ □□ □□□ □□□□□.

Answer: B ([LEAVE A REPLY](#))

NEW QUESTION: 87

□□ □□ □ □□□□□□□ □□ □□□ □□ □□□□□ □□□ □□□□□ □□□□ □□□□□. □□ □□ □□□□□ □ □ □□ □□□□□ □□□□□?

- A. cpd
- B. fwd
- C. cpwd
- D. fwm

Answer: ([SHOW ANSWER](#))

NEW QUESTION: 88

UserDirectory□ □□□□□ □□□ □□□□ □□□□□?

- A. □□ □□□□□ > □□ □□ > □□□ □□□□(LDAP) > □□ □□□□□□ □□□ □□□□(LDAP) □□□ □□□□ □□□ □□□□□.
- B. □□ □□□□□ > □□ □□ > □□ > □□ □□□□□□ □□□ □□□□(LDAP) □□□ □□□□ □□ □□□□□.
- C. □□ □□ > □□□ □□□□(LDAP) > □□ □□□□□□ □□□ □□□□(LDAP) □□□ □□□□ □□ □□□□□.
- D. □□ □□ > □□ > □□ □□□□□□ LDAP(UserDirectory) □□□ □□□□ □□□ □□□□□.

Answer: C ([LEAVE A REPLY](#))

NEW QUESTION: 89

IP □□□□ □□□□ □□ □□ □□□ Security Gateway□ □□□□ □□□ □□□□□?

- A. □□
- B. □□□ □□
- C. □□
- D. □□ □□□

Answer: ([SHOW ANSWER](#))

NEW QUESTION: 90

ClusterXL□ □□□□□ □ □□□□ □□□ □□□□□?

- A. □□□ □□□□
- B. □□□□□

C. cpconfig

D. sysconfig

Answer: C (LEAVE A REPLY)

NEW QUESTION: 91

Which command is used to display the configuration of the CPMQ process?

A. Cpmqueue

B. cpmq

C. cpmq

D. Cpmq

Answer: C (LEAVE A REPLY)

156-215.81 CheckPoint DumpTop 156-215.81! DumpTop 156-215.81 CheckPoint, DumpTop 156-215.81 CheckPoint. <https://www.dumptop.com/CheckPoint/156-215.81-dump.html> (414 Q&As Dumps, 30%OFF Special Discount: **KrDump**)

NEW QUESTION: 92

Which command is used to display the configuration of the GAIa process?

A. show config <process name>

B. show config <process name>

C. show config -o <process name>

D. show config -f <process name>

Answer: B (LEAVE A REPLY)

NEW QUESTION: 93

Which command is used to display the configuration of the SmartView Tracker process?

A. SmartView Tracker

B. SmartView Tracker WinSCP

C. SmartDashboard IP

D. SmartView Monitor IP

Answer: B (LEAVE A REPLY)

NEW QUESTION: 94

□□□ □□□ □□□□□ □□ SmartEvent R80 □ □□□□□□□ □□□ □□□□.

- A. SmartEvent□ □ □□□□□□□ □□□□.
- B. □□□□
- C. SmartEventWeb
- D. SmartView □□□

Answer: [\(SHOW ANSWER\)](#)

NEW QUESTION: 95

□□ □□ □ □□□□ □□□□ □□□□□□ □ □□□□ □□□ □□□□□?

- A. cphaprob
- B. □□□□ □□
- C. cphaprob □□
- D. cphaprob □□

Answer: C [\(LEAVE A REPLY\)](#)

NEW QUESTION: 96

□□ □□□□ □□ IAP(Identity Awareness)□ □□□□ □□ □□ □□□ □□□□□?

- A. □□□ □□ □□
- B. ID □□□□ □□
- C. □□□□□ □□ □□□ ID □□
- D. □□ □□ □□

Answer: B [\(LEAVE A REPLY\)](#)

□□□□□ □□□□□ □□□□□ □□□□ □□□ □□ □ □□□□.

NEW QUESTION: 97

R80.10 □□ □□□ □□□ □□□□□□ □□□ □ □□□□?

- A. □□ R75 □□
- B. □□ R77 □□
- C. □□ R75.20 □□
- D. □□ R76 □□

Answer: [\(SHOW ANSWER\)](#)

NEW QUESTION: 98

□□ □□(SecureXL)□ □□ □□□□ □□□ □□□□□. □□ □□□ □□□□ □□ □□□ □□□□□?

- A. □□ □□
- B. □□ □□
- C. □□□ □□
- D. TCP □□ □□

Answer: [\(SHOW ANSWER\)](#)

NEW QUESTION: 99

Bob and Joe are using Gaia routers. Bob's WebUI shows Joe's CLI output. Bob and Joe are using the same configuration. What is the cause of the problem?

- A. Joe's configuration is not applied.
- B. The configuration is not applied to the correct interface.
- C. Joe's configuration is not applied to Bob's router.
- D. Bob and Joe are using different configurations.

Answer: A ([LEAVE A REPLY](#))

NEW QUESTION: 100

Which of the following is a valid IP address?

- A. 10.0.0.0
- B. 10.0.0.1
- C. 10.0.0.255
- D. 10.0.0.256

Answer: A ([LEAVE A REPLY](#))

NEW QUESTION: 101

Which of the following is a valid IP address for a VPN client?

- A. 10.0.0.1
- B. 10.0.0.255
- C. 10.0.0.1/24
- D. 10.0.0.1(10.0.0.1/24)

Answer: ([SHOW ANSWER](#))

NEW QUESTION: 102

Which of the following is a valid IP address?

- A. 10.0.0.0
- B. 10.0.0.1
- C. 10.0.0.255 SmartDashboard
- D. 10.0.0.256

Answer: C ([LEAVE A REPLY](#))

NEW QUESTION: 103

Which of the following is a valid IP address?

- A. 10.0.0.1
- B. 10.0.0.255 IP address
- C. 10.0.0.256
- D. 10.0.0.1 MAC address RMA

Answer: (SHOW ANSWER)

NEW QUESTION: 104

MyCorp has a single NAT server. The NAT server is configured to use Google DNS(8.8.8.8) for all DNS requests. The NAT server is also configured to use the same DNS server for all DNS requests.

- A. The NAT server is configured to use the same DNS server for all DNS requests.
- B. The NAT server is configured to use the same DNS server for all DNS requests.
- C. VPN clients use the NAT server for all DNS requests.
- D. The NAT server is configured to use the same DNS server for all DNS requests.

Answer: (SHOW ANSWER)

NEW QUESTION: 105

Which of the following is the BEST practice for configuring a Security Gateway?



- A. Security Gateway should be configured to allow FTP traffic to FTP_Ext-server.
- B. Security Gateway should be configured to allow FTP traffic to FTP_Ext.
- C. Security Gateway should be configured to allow FTP traffic to FTP_Ext.
- D. Security Gateway should be configured to allow FTP traffic to FTP_Ext-server.

Answer: (SHOW ANSWER)

NEW QUESTION: 106

Which of the following is the BEST practice for configuring a Security Gateway?

- A. MS Office, PDF files should be blocked.
- B. All traffic should be blocked.
- C. All traffic should be blocked except for 3000 ports.
- D. All traffic should be blocked except for 3000 ports.

Answer: (SHOW ANSWER)

156-215.81 is a collection of CheckPoint dumps. DumpTop 156-215.81! DumpTop 156-215.81 is a collection of CheckPoint dumps, DumpTop 156-215.81 is a collection of CheckPoint dumps. DumpTop 156-215.81 is a collection of CheckPoint dumps. <https://www.dumpstopping.com/Checkpoint/156-215.81-dump.html> (414 Q&As Dumps, **30%OFF** Special Discount: **KrDump**)

NEW QUESTION: 107

□□ □□□: _____ □□□ □□□□ □□□□ □□□ □□ □□ □□□□ □□□ □ □□□□.

- A. □□ □□ □□□
- B. □□ □□
- C. □□ □□
- D. □□ □□ □□□

Answer: [\(SHOW ANSWER\)](#)

NEW QUESTION: 108

□□□ □□ □□□ "First"□ □□□ □□ Jorge□ □□□ □ □ □□ □□□ □□□□□?

- A. □□ □□□□ □□□ □□ □□□ □□□□ □□□□□.
- B. Log Implied Rule□ □□ □□□□ □□ □□ □□□□ □□□□ □□□□□.
- C. □□ □□ □□ □□□□ □□□□□.
- D. □□ □□ □□ □□ □□ □□ □□ □□□□ □□□□□.

Answer: [\(SHOW ANSWER\)](#)

□□□ □□□ □□ □□□□□ □□□□□□.

NEW QUESTION: 109

SmartDashboard□ □□□ □ R77□ □□□□□□ □□ □□□ □□□□□?

- A. □□□□, □□ □□ IP, LDAP □□ IP
- B. □□□ □□, □□ □□ IP, □□□ □□ □□
- C. □□□ □□, □□□□, □□ □□ IP
- D. □□□□, □□□□ IP

Answer: C [\(LEAVE A REPLY\)](#)

NEW QUESTION: 110

□□□□ □□□ □□□□ □□□□□?

- A. □□□ □□□ □□ □□□□□□□ □□□ □□
- B. □□□ □□ □□□□□ SmartWorkflow□ □□□□ □□□□□.
- C. □□□ □□□□ □□□□□□.
- D. □□ □□□ □□□ □□□ □□□ □□□ □ □□□□ □□□.

Answer: [\(SHOW ANSWER\)](#)

NEW QUESTION: 111

□□ □ R77 Windows CD□□ □□□ □ □□ □□ □□□ SmartConsole □□□□□□ □□□□□□? □□ □□□ □□ □□ □□□□ □□□ □□□ □□□□□□.

- A. SmartView □□□, CPINFO, SmartUpdate
- B. SmartView □□□, SmartDashboard, CPINFO, SmartUpdate, SmartView □□
- C. SmartView □□□, SmartDashboard, SmartLSM, SmartView □□□
- D. □□ □□ □□□, □□ □□, □□□ □□□ GUI

Answer: A [\(LEAVE A REPLY\)](#)

NEW QUESTION: 112

SmartUpdate R77□□ □□□ □ □□ □□□ □□□□□?

- A. upgrade_export
- B. fw □□ -1
- C. cpinfo
- D. remote_uninstall_verifier

Answer: C ([LEAVE A REPLY](#))

NEW QUESTION: 113

□□ □□ □□□ □□□ □□ □□ □□□□□?

- A. □□□ □□
- B. □□□
- C. □□□
- D. □□□□ □□ □□ □□□□ □□

Answer: B ([LEAVE A REPLY](#))

NEW QUESTION: 114

Check Point ClusterXL Active/Active □□□ □□□ □□ □□□ □□□□□.

- A. □□□□ □□□□ □□□□ □□□□.
- B. Load Sharing □□□□ □□□□ □□□□.
- C. □□□□□ □□□□ □□□ □□□□
- D. Unicast □□□□ □□□ □□□□

Answer: A ([LEAVE A REPLY](#))

NEW QUESTION: 115

SmartEvent □□ □□□□ □□□□ □□ □□□ □□□ □□□ □□□ □□□□.

- A. □□□ > □□ □□ > □□ □□ > SmartEvent □□ □□□□□□ > SmartEvent □□□□□□
- B. □□□ > □□ □□ > SmartEvent □□ □□□□□□ > □□ □□ > SmartEvent □□□□□□
- C. □□□ > □□ □□ > □□ □□ > SmartEvent □□ □□□□□□ > SmartEvent □□□□□□
- D. □□□ > SmartEvent □□ □□□□□□ > □□ □□ > □□ □□ > SmartEvent □□□□□□

Answer: C ([LEAVE A REPLY](#))

NEW QUESTION: 116

□□ □□□: □ □□ □□□ □□ _____ □□□ □□ □□ □□ □□□□□.

- A. □□□ □□
- B. □□□ □□
- C. □□□ □□
- D. □□□ □□

Answer: B ([LEAVE A REPLY](#))

NEW QUESTION: 117

Which of the following is a valid IP address for a host in a network with a 10.0.0.0/24 address space?

- A. 10.0.0.0
- B. 10.0.0.1
- C. 10.0.0.255
- D. 10.0.0.254

Answer: D ([LEAVE A REPLY](#))

NEW QUESTION: 118

Which of the following is a valid IP address for a host in a network with a 10.0.0.0/24 address space?

- A. 10.0.0.0, 10.0.0.1 SmartView Monitor
- B. SmartView Monitor, 10.0.0.1
- C. 10.0.0.0, 10.0.0.1
- D. 10.0.0.1, SmartView Monitor

Answer: ([SHOW ANSWER](#))

NEW QUESTION: 119

Which of the following is a valid IP address for a host in a network with a 10.0.0.0/24 address space?

- A. 10.0.0.0, 10.0.0.1
- B. 10.0.0.1, 10.0.0.255
- C. 10.0.0.0, 10.0.0.255
- D. 10.0.0.1, 10.0.0.254

Answer: ([SHOW ANSWER](#))

Which of the following is a valid IP address for a host in a network with a 10.0.0.0/24 address space? Check Point Security Gateway

NEW QUESTION: 120

Which of the following is a valid IP address for a host in a network with a 10.0.0.0/24 address space?

- A. SmartUpdate > 10.0.0.1 > SIC
- B. SmartDashboard > 10.0.0.1 > 10.0.0.1 > 10.0.0.1
- C. SmartDashboard > 10.0.0.1 > SIC
- D. SmartUpdate > 10.0.0.1 > 10.0.0.1

Answer: ([SHOW ANSWER](#))

NEW QUESTION: 121

_____ □□□□□ □□□□ □□□□ □□□□ □□□□ □□ CPU □□ □ OS □□ □□□□ □ □□□□□.

- A. □□□ □□ □□□□□
- B. □□□ □□ □□
- C. □□□ □□□
- D. □□□ □□ □□

Answer: ([SHOW ANSWER](#))

156-215.81 □□ □□□ □□□□□ □□ DumpTop □□ □□□□ □□□ 156-215.81 □□! DumpTop □ □□ 156-215.81 □□ □□□ □□□□□□□, DumpTop 156-215.81 □□ □□□ □□□□□□□□ □ □□ □□□□□□□□. □□□□ □□□□ □□□□ □□ DumpTop 156-215.81 □□□ □□□□□□. <https://www.dumptop.com/CheckPoint/156-215.81-dump.html> (414 Q&As Dumps, **30%OFF Special Discount: KrDump**)

NEW QUESTION: 122

□□ □□□□ SmartDashboard □□□ □□□□ ID □□□ □□□□□□?

- A. □□ □□ □□ > □□ □□
- B. LDAP □□ □□ > □□ □□
- C. □□ > □□ □□ > ID □□
- D. □□□□□ □□ > □□ □□

Answer: D ([LEAVE A REPLY](#))

NEW QUESTION: 123

fw □□□ □□□□□ □□ □ □□ □□□ □□□□ □ □□□□□?

- A. 2□□ □□ □□
- B. □□ □□ □□
- C. □□□ □□□□□□ □□
- D. □□ □□

Answer: ([SHOW ANSWER](#))

NEW QUESTION: 124

LDAP □□□ □□□ □□□□ □□□ □□□ □□□□□ □□ □□ □□□ □□□□□□□□?

- A. □□□ □□
- B. □□ □□□
- C. □□□ □□
- D. SmartDirectory □□

Answer: ([SHOW ANSWER](#))

NEW QUESTION: 125

□□ □□□: RADIUS Accounting □ □□ □□□□□□ □□□ □□□□ □□□□ □□□□□□.

- A. □□□
- B. □□□□□
- C. □□□□
- D. □□

Answer: [\(SHOW ANSWER\)](#)

RADIUS □□□ ID □□□ □□ □□□□ □□

RADIUS □□□ RADIUS □□ □□□□□□ □□□ RADIUS □□ □□□□ ID □□□□ □□□□□.

NEW QUESTION: 126

□□ □□□: □□□ □□□ □□□ □□□□□□ □□□□□□ □□□□□□□□.

- A. NAT
- B. □□ □□
- C. □□□
- D. □□ □□□

Answer: [\(SHOW ANSWER\)](#)

NEW QUESTION: 127

WebUI □ CPUSE □ □□ □□□□ □□□□□□ □ □□ □□□ □□□□□□. □ □ □□□ □□ □□□□□

□. CPUSE □□□□□ □□□ □ □ □□□□ □□□□ □□□□ □□□□□□□□?

- A. 3□□□□
- B. 2□□□□
- C. □□□ 6□
- D. □□□ 7□

Answer: A [\(LEAVE A REPLY\)](#)

NEW QUESTION: 128

□□□□□ □□□ □ □□ □□ □□□ □□□□□□?

- A. Capsule Docs, Capsule Cloud, Capsule Connect
- B. Capsule Workspace, Capsule Cloud, Capsule Connect
- C. Capsule Workspace, Capsule Docs, Capsule Cloud
- D. Capsule Workspace, Capsule Docs, Capsule Connect

Answer: C [\(LEAVE A REPLY\)](#)

NEW QUESTION: 129

CLI □□ □□□□□ □□□ □□□ □□□□□□?

- A. fw □□□
- B. fw ver
- C. cpinfo
- D. fw □□

Answer: B [\(LEAVE A REPLY\)](#)

NEW QUESTION: 130

□□ □□ □□□ □□□□ □□□□□□□□□□□?

- A. □□□□□ □□□
- B. □□□□□
- C. □□□□□ □□ □□□
- D. □□□ □□ □□

Answer: D ([LEAVE A REPLY](#))

NEW QUESTION: 131

□□ □□ □□□□ □□ http □□ □□□ □□□□ □ API□ □□□□□?

- A. □□□□ □□
- B. □□□ □□
- C. X-chkp-sid
- D. □□□□□□

Answer: B ([LEAVE A REPLY](#))

NEW QUESTION: 132

□□□□□ □□□ GAiA□ □□□□ □□ □□ □□□ □□□ □□□□□ □□□. □□ □□□ □□□ □ □□□□?

- A. □□ □□ □□
- B. □□□□ □□ □□
- C. □□ □□ □□
- D. □□ □□ □□

Answer: D ([LEAVE A REPLY](#))

NEW QUESTION: 133

□□ □□ □ CLI□□ □□□□ □□□□ □□□□□□ □ □□□□ □□□ □□□□□?

- A. □□□□ □□ □□
- B. □□ □□□□ □□
- C. □□□□ □□
- D. □□ □□ □□□□ □□

Answer: A ([LEAVE A REPLY](#))

□□:

https://sc1.checkpoint.com/documents/R81/WebAdminGuides/EN/CP_R81_ClusterXL_AdminGuide/Topics-CXLG/Viewing-Cluster-State.htm

NEW QUESTION: 134

OS □□ □□ □□ □□□ □□□ □□□□□ □□□□□□. □ □□□ □□□□□ □□ □□□ □□□□ □□□□?

- A. cp_merge

- B. □□□□ □□□□□□
- C. □□ □□□□
- D. □□_□□

Answer: D ([LEAVE A REPLY](#))

NEW QUESTION: 135

SecureXL□ □□□□ □□□ □□□ □□ □□□ □□□□□□?

- A. □□□ □□; □□ □□; □□ □□
- B. □□□ □□; □□□□ □□; □□ □□
- C. □□ □□; □□ □□; □□ □□
- D. □□□ □□; □□ □□; □□ □□

Answer: ([SHOW ANSWER](#))

NEW QUESTION: 136

□□ □□□□□ □□□□. □□ CLISH □□□ □ □□□ □□□□□□?

```

#
# Configuration of R80-MGMT
# Language version: 13.0v1
#
# Exported by admin on Fri Apr 22 13:22:45 2016
#
set installer policy periodically-self-update on
set installer policy send-cpuse-data off
set installer policy self-test auto-rollback off
set installer policy self-test install-policy off
set installer policy self-test network-link-up off
set installer policy self-test start-processes on
set arp table cache-size 4096
set arp table validity-timeout 60
set arp announce 2
set message banner on

set message motd off

set message caption off
set core-dump enable
set core-dump total 1000
set core-dump per_process 2
set clienv debug 0
set clienv echo-cmd off
-- More --

```

- A. □□ □□ □□
- B. confd □□ □□
- C. confd □□ □□ □□

D. □□ □□

Answer: D (LEAVE A REPLY)

To see the latest configuration settings, run:

show configuration

This example shows part of the configuration settings as last saved to a CLI script:

```

mem103> show configuration
#
# Configuration of mem103
# Language version: 10.0v1
#
# Exported by admin on Mon Mar 19 15:06:22 2012
#
set hostname mem103
set timezone Asia / Jerusalem
set password-controls min-password-length 6
set password-controls complexity 2
set password-controls palindrome-check true
set password-controls history-checking true
set password-controls history-length 10
set password-controls password-expiration never
set ntp active off
set router-id 6.6.6.103
set ipv6-state off
set snmp agent off
set snmp agent-version any
set snmp community public read-only
set snmp traps trap authorizationError disable
set snmp traps trap coldStart disable
set snmp traps trap configurationChange disable

```



156-215.81 □□ □□□ □□□□□ □□ DumpTop □□ □□□□ □□□ 156-215.81 □□! DumpTop
 □ □□ 156-215.81 □□ □□□ □□□□□□, DumpTop 156-215.81 □□ □□□ □□□□□□□□ □
 □□ □□□□□□□. □□□□ □□□ □□□□ □□ DumpTop 156-215.81 □□□ □□□□□.

<https://www.dumpst.com/CheckPoint/156-215.81-dump.html> (414 Q&As Dumps, **30%OFF Special**

Discount: **KrDump**)

NEW QUESTION: 137

□□□ MegaCorp□ □□ □□□□□□. □□□ □□ □□□ □□□ □□□□□ □□□□□ □□ □□□
 □□□ □□ □□□□□ □□□□ □□□. □□□ □ □ □□□? □□□ □□□ □□□□□.

- A. SmartReporter□ □□□ □□□□□ - □□ > □□ □□ □□ □□□□ □□ □□ □□ □□□ □□ □□□
- B. SmartView □□□□□ Matching Rate □□ □□□□□.
- C. SmartReporter□ □□□ □□□□□ - □□ > □□□□□ □□ □□□□ □□ □□ □□ □□□ □□ □□□
- D. □□ □ □□ □□□□□. SmartDashboard□ □□ □□ □□□ UserDefined□ □□□ □ □□□□□. □□
 □□ □□ □□□□ □□□□ □□ □□□□□□ □□□□ □□□.

Answer: (SHOW ANSWER)

NEW QUESTION: 138

□□□ Check Point Cluster□ □□□□ □□ MegaCorp IT □□□ □□□□□ □□□□ □□ Smart-1 1□
 □ Security Gateway Appliance 2□□ □□□□□□□. □□ □□□ □□□□□□□□?

- A. □□ □□□
- B. □□
- C. □□ HA □□□□

D. □□□□

Answer: (SHOW ANSWER)

NEW QUESTION: 139

Check Point □□□□□ □□ □□□□ □ □□□ □ □□ GUI □□□ □□□□□?

A. cpconfig

B. □□ □□□

C. □□□□□

D. □□□ □□□□

Answer: (SHOW ANSWER)

SmartUpdate GUI□ □□□□□ □□□□ □ □□□□ □□□□□.

NEW QUESTION: 140

□□□□ □□□ □□□□ □□□ □□□?

A. □□□ □□ □□□ □□□ □□□ □□□□ □□ □□ □□□□ □□□□□ □□□□□.

B. □□□ □□ □□□ □□□ □□□ □□□□ □□□ □□□□ □□□□ □□□□□.

C. □□□ □□ □□□ □□□ □□□ □□□□ □□□ □□□□ □□□ □□□ □□ □□□□ □□□□□ □□□□□.

D. □□□ □□ □□□ □□□ □□□ □□□□ □□□ □□□□ □□□ □□□ □□□□□.

Answer: C (LEAVE A REPLY)

156-215.81 □□ □□□ □□□□□ □□ DumpTop □□ □□□□ □□□ 156-215.81 □□! DumpTop □ □□ 156-215.81 □□ □□□ □□□□□□, DumpTop 156-215.81 □□ □□□ □□□□□□□□ □ □□ □□□□□□□□. □□□□ □□□ □□□□ □□ DumpTop 156-215.81 □□□ □□□□□.

<https://www.dumpst.com/CheckPoint/156-215.81-dump.html> (414 Q&As Dumps, **30%OFF** Special Discount: **KrDump**)